

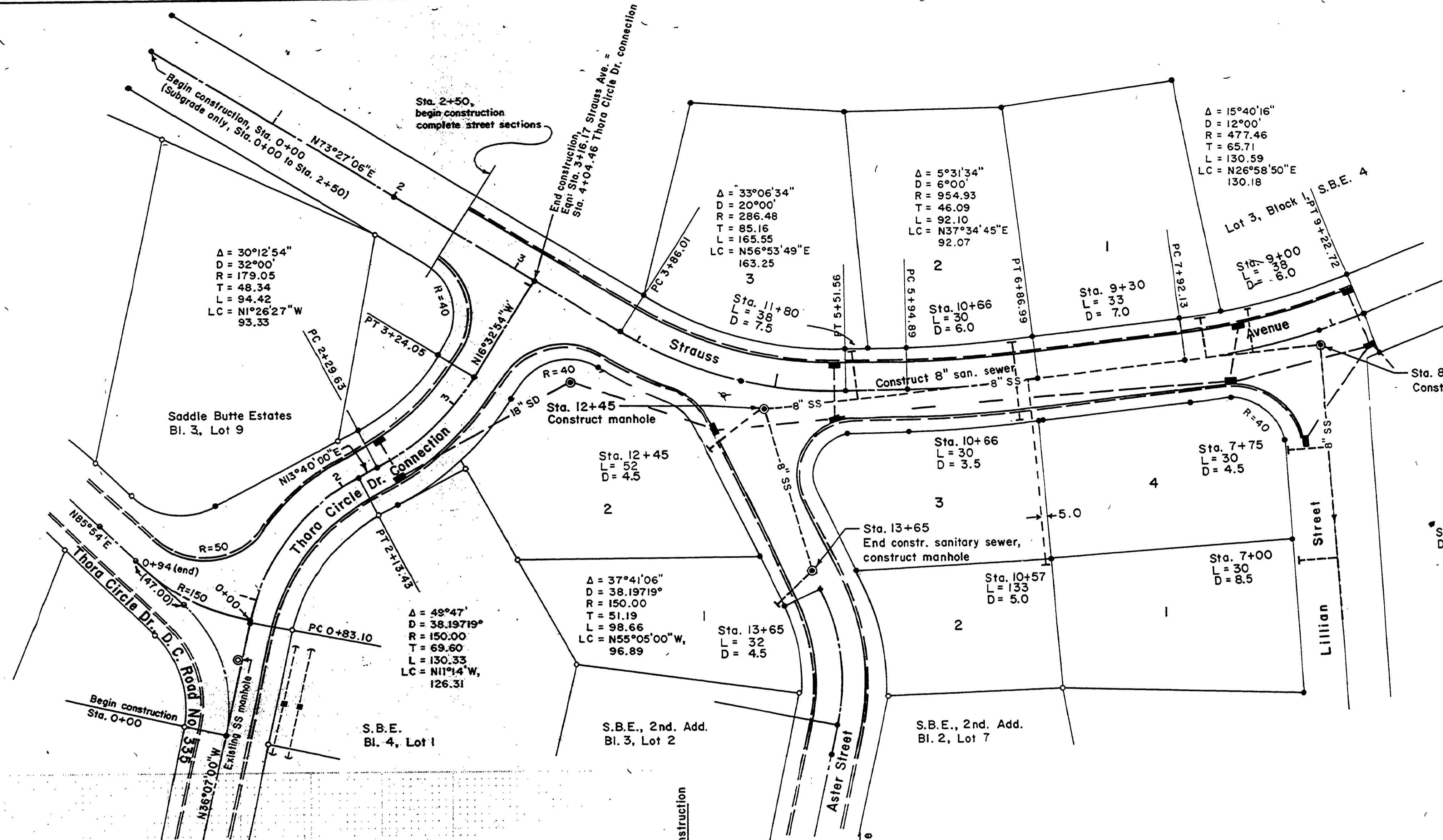
**SANITARY SEWERS**

**STANDARDS FOR SANITARY SEWER CONSTRUCTION  
(ADDITIONAL STANDARDS)**

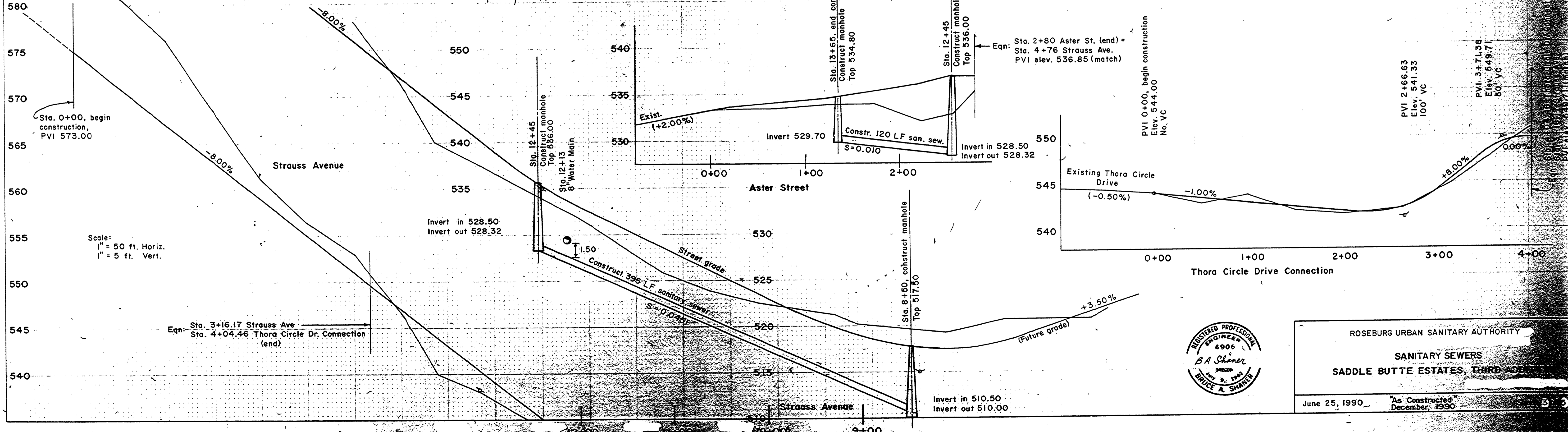
- SANITARY SEWERS:**
- All work shall be in conformance with RUSA Specifications and Ordinance and City of Roseburg Standards and Specifications.
  - Sanitary sewer pipe shall be PVC ASTM 3034 SDR 35.
  - Sanitary sewers shall be air tested in accordance with standard specifications Unibell B-06.85, after compaction of backfill.
  - Trench backfill shall be Class "A" (3/4" minus) under all streets, curb-to-curb, and Class "C" (suitable excavated material) elsewhere. All trenches will be compacted with hand operated pneumatic compactor.
  - Concrete shall be "Class 5 (1 1/2" max. aggregate size) with 6 sacks cement per cubic yard of concrete, with a minimum compressive strength of not less than 3,000 P.S.I. at 28 days when tested in accordance with ASTM C-39.86.
  - Sanitary sewer laterals shall be constructed in accordance with Oregon State Department of Commerce, Building Codes Division, 1988 Uniform Plumbing Code and its amendments, except for the 8" public sewer which shall be constructed in accordance with RUSA and DEQ Standards for public sewers and to the lines, grades and details shown on the plans. All service laterals shall be 4" PVC ASTM 3034. All lines shall have tone wire.
  - All sewer laterals shall be air tested in accordance with applicable code.
  - Whenever sewer laterals cross water lines with less than 18" clearance (vertical) the sewer lateral shall be cast or ductile iron pipe 9" minimum each side of the water lines.
  - Manholes to be tested according to 1980 Oregon APWA Standard Specifications 306.3.01C. Water to be filled to the rim. All manhole connections to be factory connectors with non-shrink grout.
  - Contractor to contact "one-call" 48 hours prior to construction.
  - Provide preformed plastic gaskets in manhole joints.
  - Grout for top of manhole frames and bases shall be non-shrink grout.
  - Use commercial concrete bonding agent on all concrete to be grouted.
  - All sanitary sewer laterals to be constructed at 2.0% grade to R/W from street centerline.

FINAL SURVEY PLOTTED TEMPLATE AREAS CHECKED

ORIGINAL SURVEY PLOTTED TEMPLATE AREAS CHECKED



FILED  
Date: 2-11-97 by JP  
This survey consists of:  
Map:  
Narrative:  
Corner Rpt.  
DOUGLAS COUNTY SURVEYOR  
Scale: 1" = 50 ft.



ROSEBURG URBAN SANITARY AUTHORITY  
SANITARY SEWERS  
SADDLE BUTTE ESTATES, THIRD ADDITION  
June 25, 1990 As Constructed December, 1990