

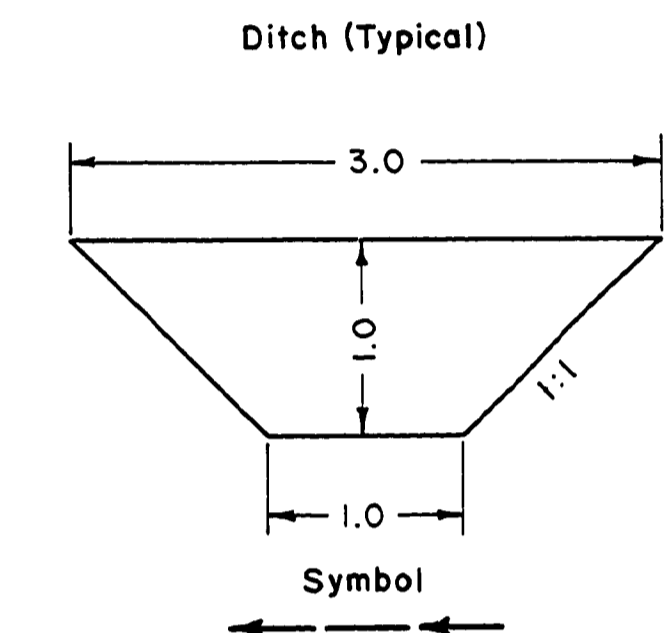
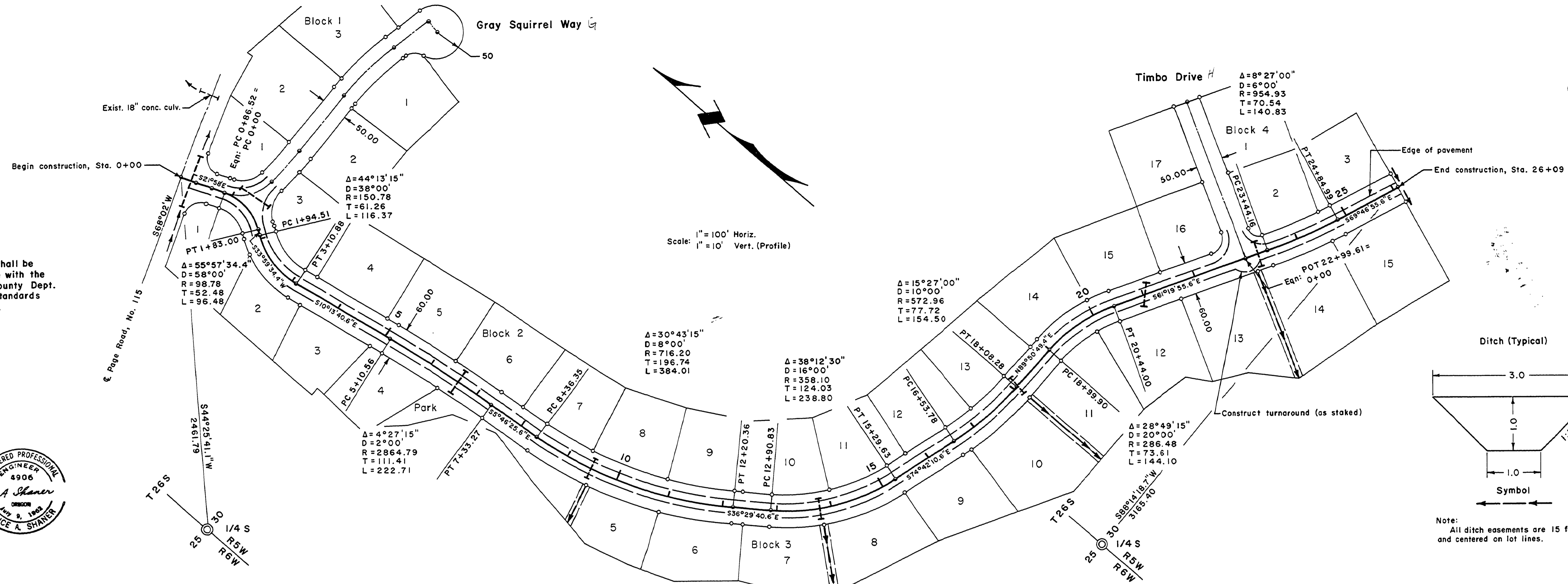
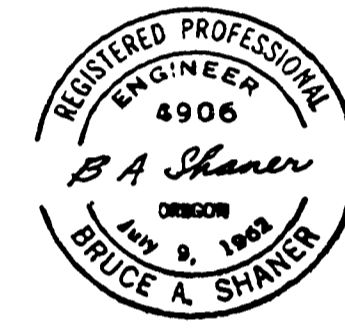
Wild Fern Drive

FILED

AUG 16 1978

COUNTY SURVEYOR
DOUGLAS COUNTY, ORE

The work herein shall be done in accordance with the current Douglas County Dept. of Public Works standards and specifications.



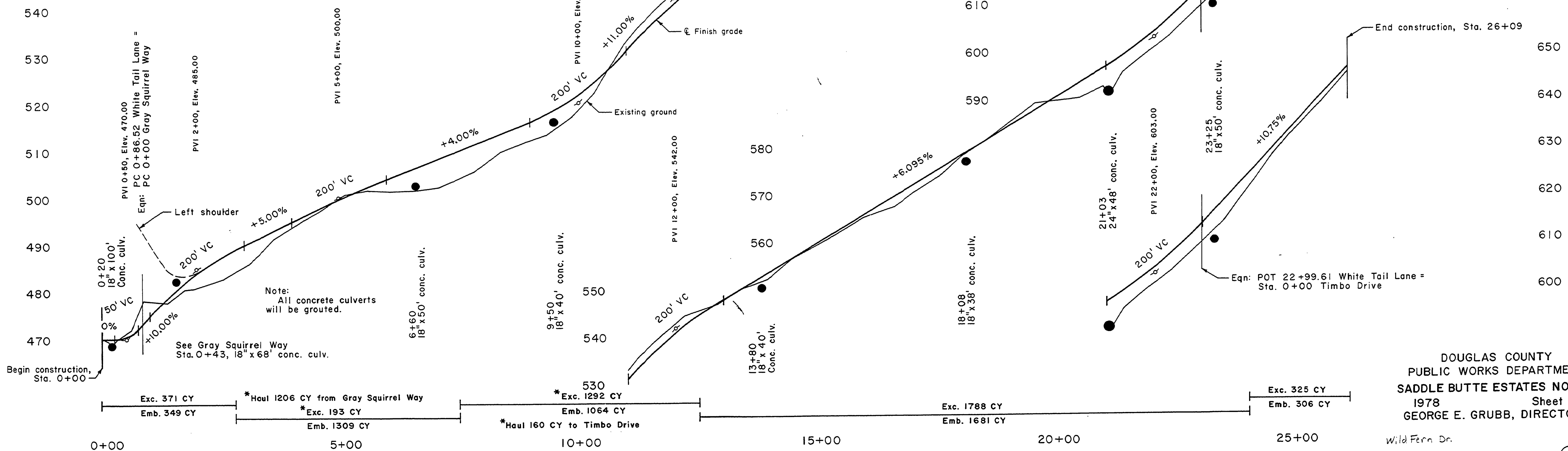
Note: All ditch easements are 15 feet wide and centered on lot lines.

TBM 1, elev. 474.95, a doubled over spike on a 10" oak 45 ft. East of Sta. 0+60.

TBM 2, elev. 513.66, a spike on a 12" ash 40 ft. West of Sta. 9+86.35.

TBM 3, elev. 588.00, a spike in an 8" ash 50 ft. West of Sta. 20+00.

TBM 4, elev. 644.02, a spike in an 18" Douglas fir 35 ft. South of Sta. 26+09.



DOUGLAS COUNTY
PUBLIC WORKS DEPARTMENT
SADDLE BUTTE ESTATES NO. 2
1978 Sheet 2 of 3
GEORGE E. GRUBB, DIRECTOR

M.P. 0.00 - 0.49

#335 F 1978

00000049