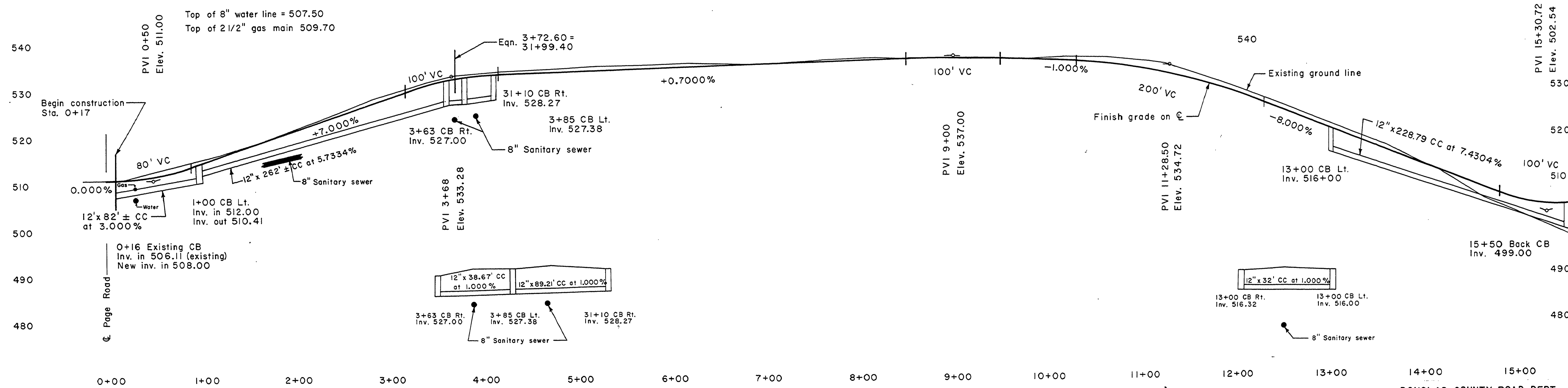


Note: For curve data see subdivision plat.



DOUGLAS COUNTY ROAD DEPT.
 THORA CIRCLE DRIVE RD. NO. 335 E
 August 1972 Sheet No. 1
 George E. Grubb, County Engr.

M.P. 0.00 - 0.32

C.R.D. # 335 E st. 1

00000032