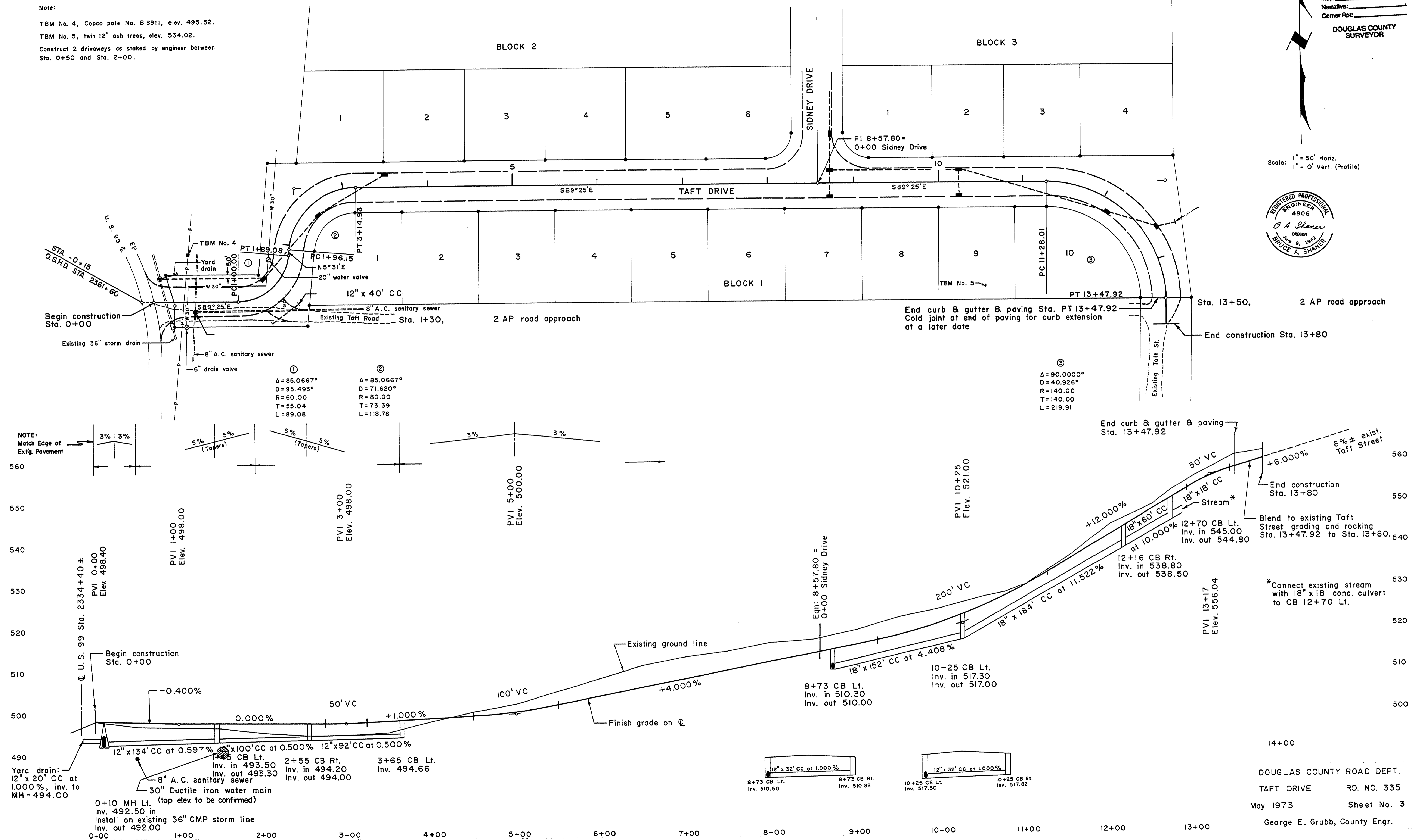
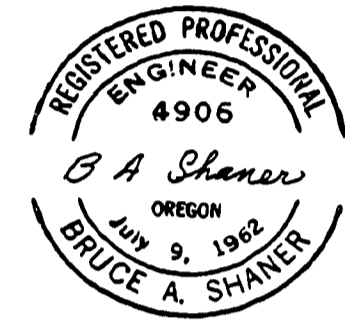


SADDLE BUTTE HOMESITES NO. 1

Note:
 TBM No. 4, Copco pole No. 8 8911, elev. 495.52.
 TBM No. 5, twin 12" ash trees, elev. 534.02.
 Construct 2 driveways as staked by engineer between Sta. 0+50 and Sta. 2+00.

FILED
 Date: 1-31-73 By: J.P.
 This survey consists of:
 Map:
 Narrative:
 Corner Rpt.:
 DOUGLAS COUNTY SURVEYOR

Scale: 1" = 50' Horiz.
 1" = 10' Vert. (Profile)



DOUGLAS COUNTY ROAD DEPT.
 TAFT DRIVE RD. NO. 335
 May 1973 Sheet No. 3
 George E. Grubb, County Engr.

ROAD 335A