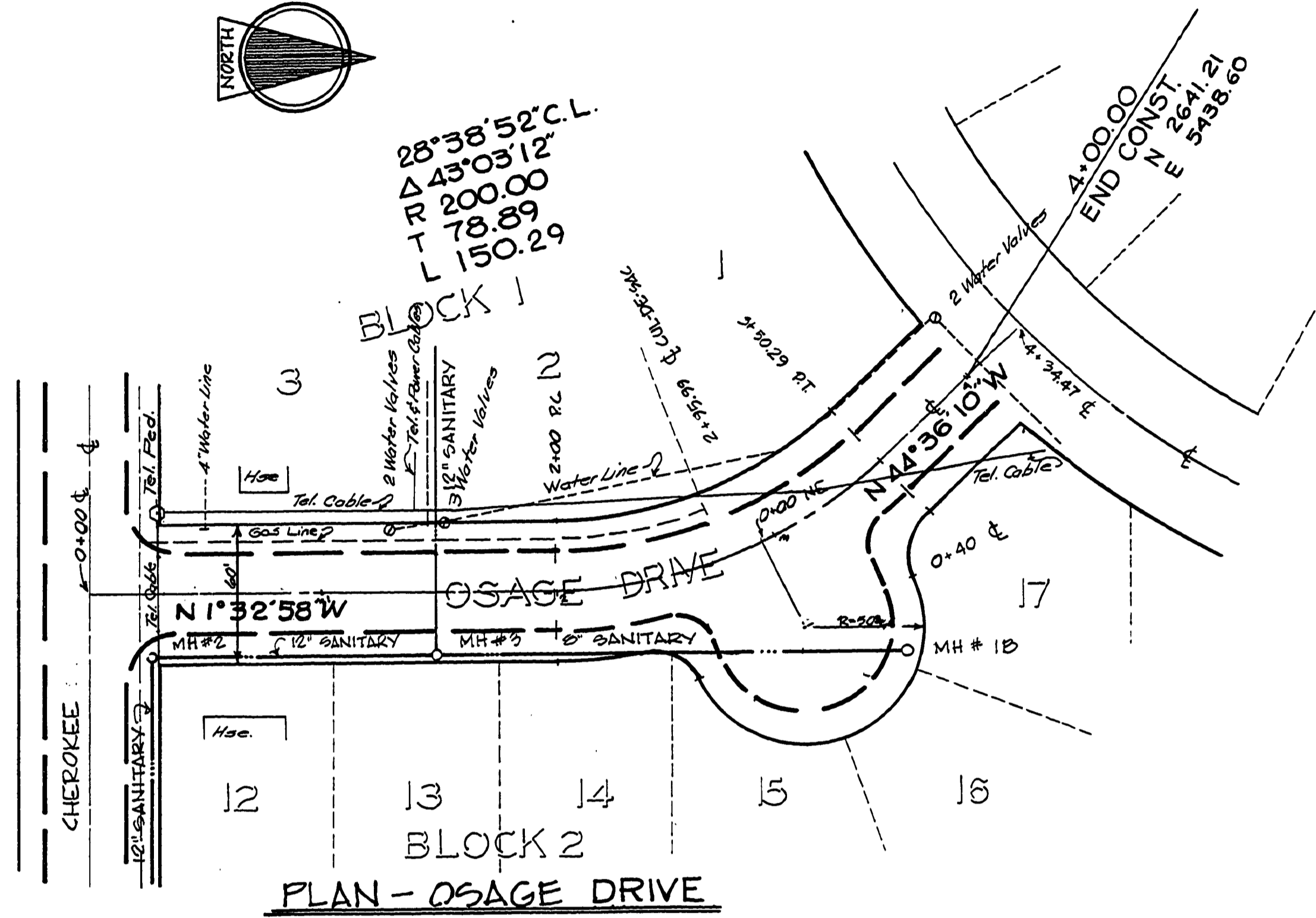
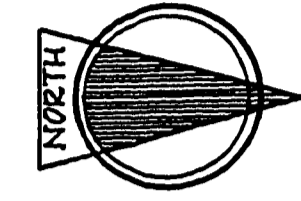
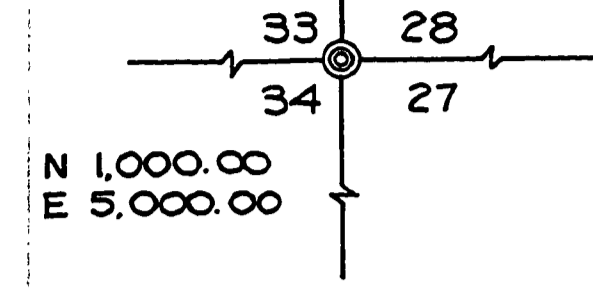
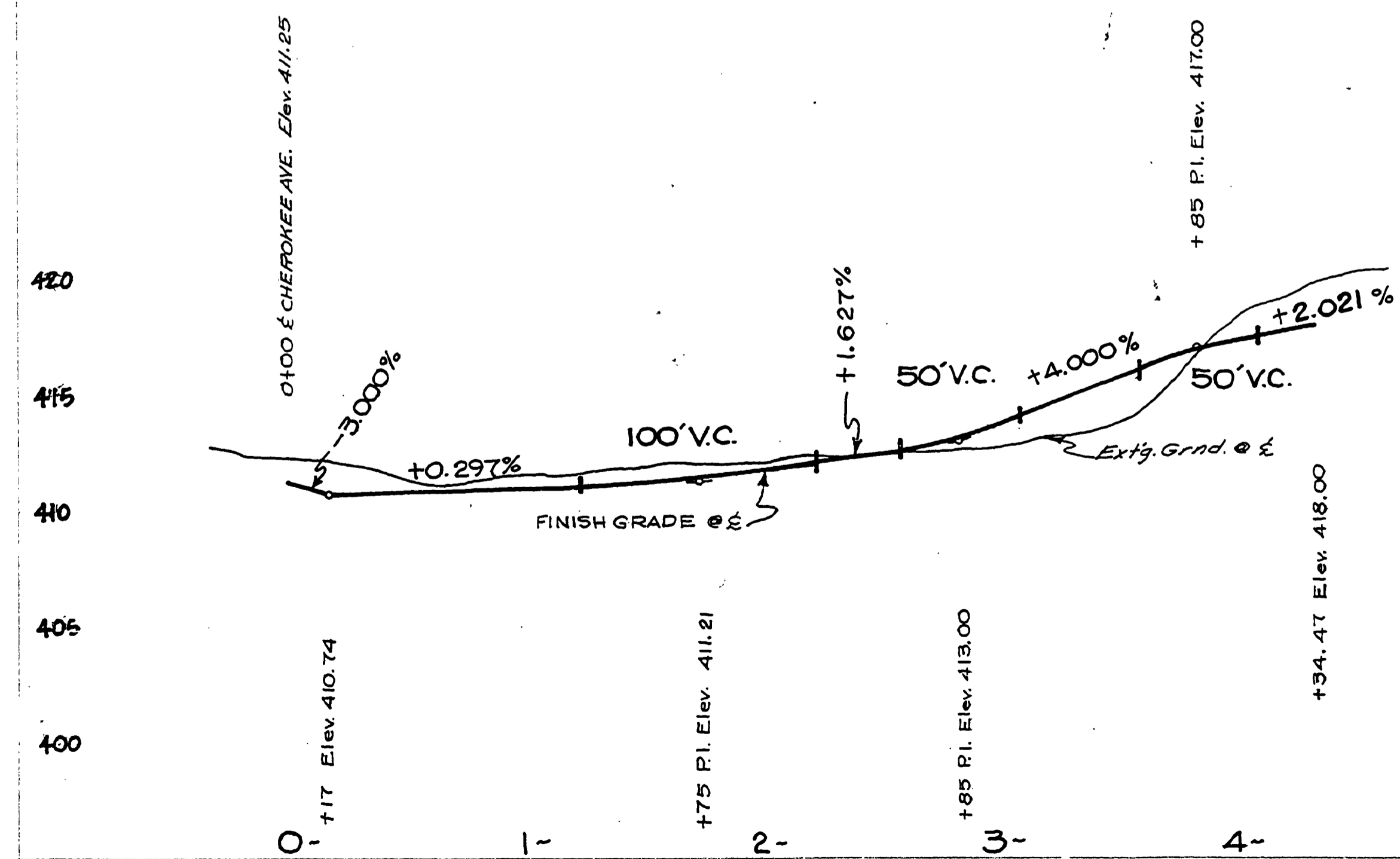


T 26S R 6W WM.



PLAN	DATE
DESIGNED	
DRAWN	
CHECKED	
APPROVED	
DATE	

PROFILE	DATE
DESIGNED	
DRAWN	
CHECKED	
APPROVED	
DATE	



8-27-74
REVISED AS BUILT P.H.
DOUGLAS COUNTY ROAD DEPT
DEL VIEW STREETS #334
1973 SHT 4
GEORGE E. GRUBB COUNTY ENGR

M.P. 0.00 - 0.07

1973
G.R.D. #334B SHT 4 (37)

00000007