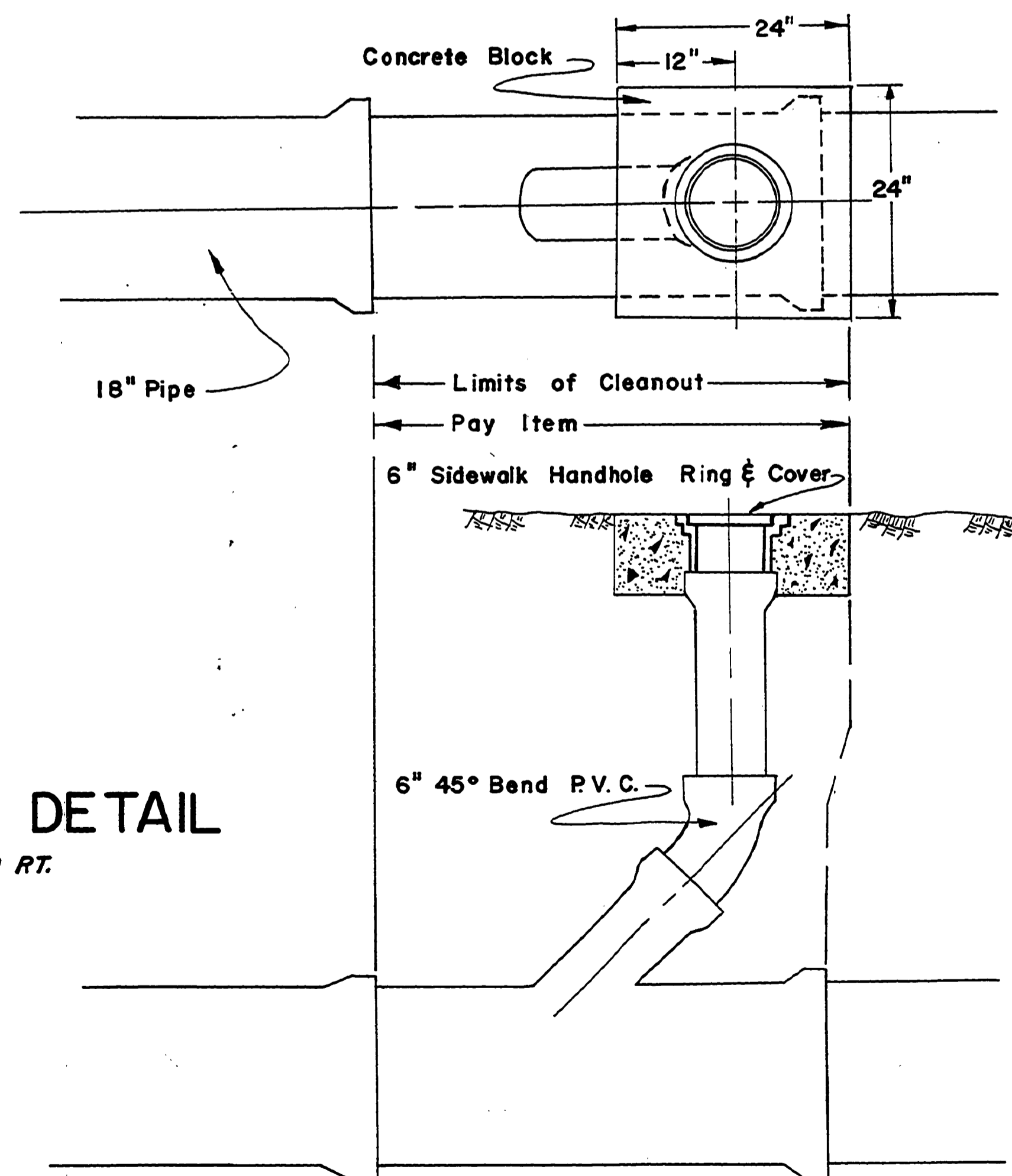


CLEANOUT DETAIL
STA. 3+00 RT.



CLEANOUT DETAIL
STA. 13+60 RT.

8-27-74
REVISED AS BUILT PH.
DOUGLAS COUNTY ROAD DEPT.
DEL VIEW STREETS #334
1973 SHT 8
GEORE E. GRUBB COUNTY ENGR

0000SEWR