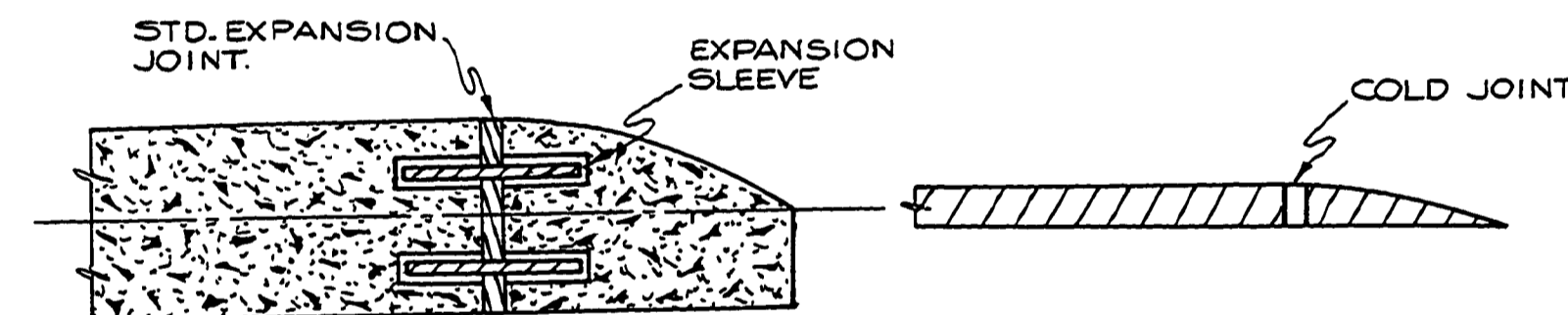
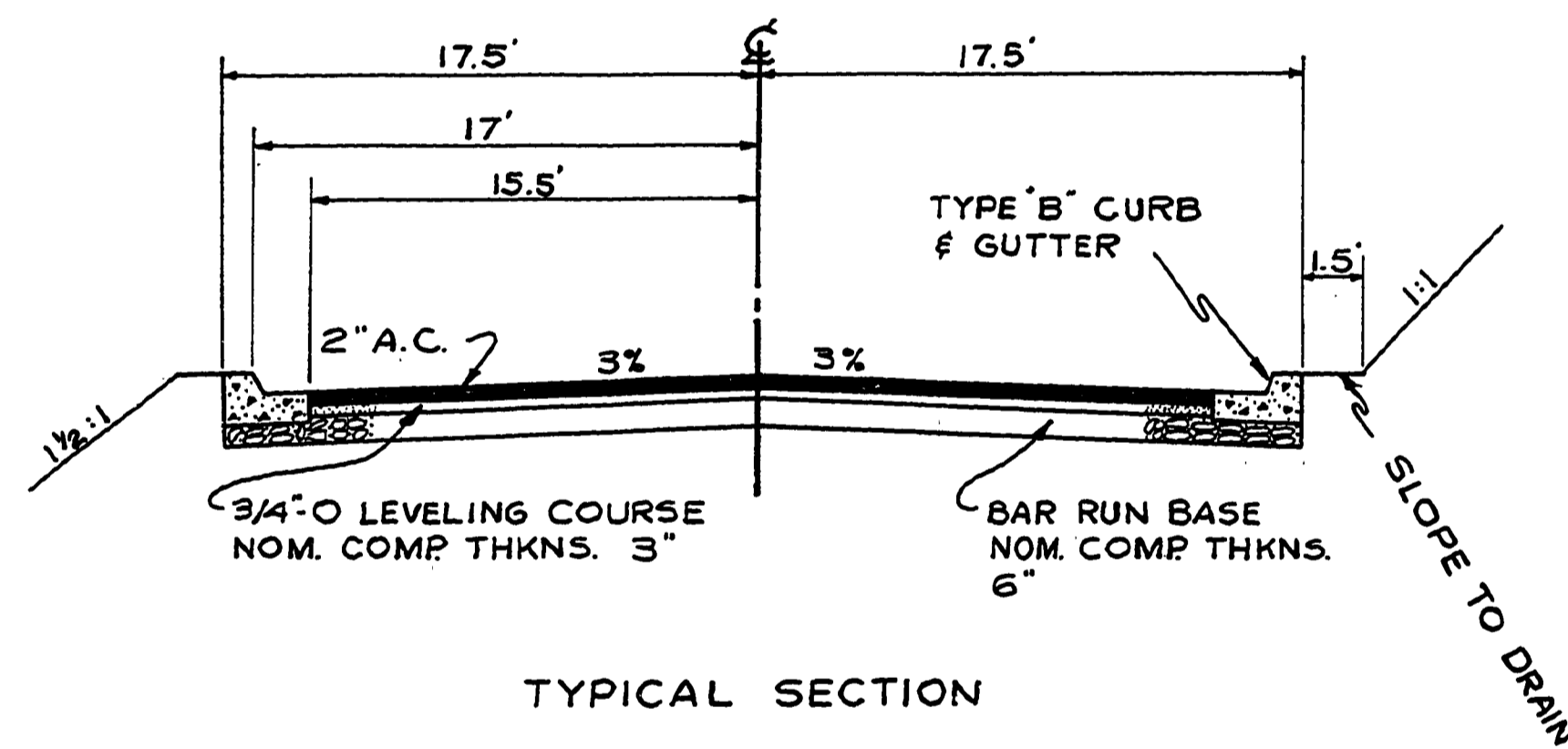
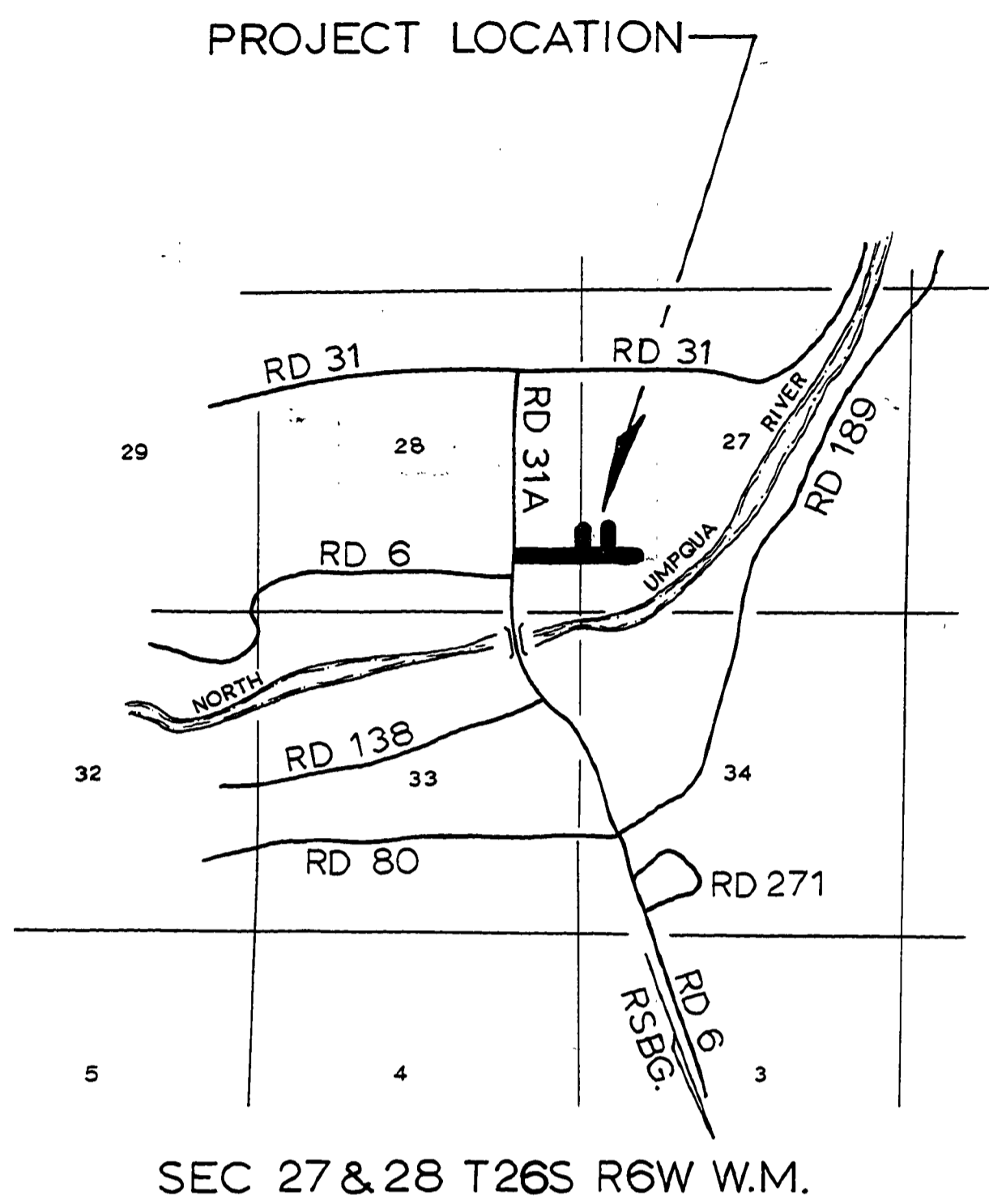
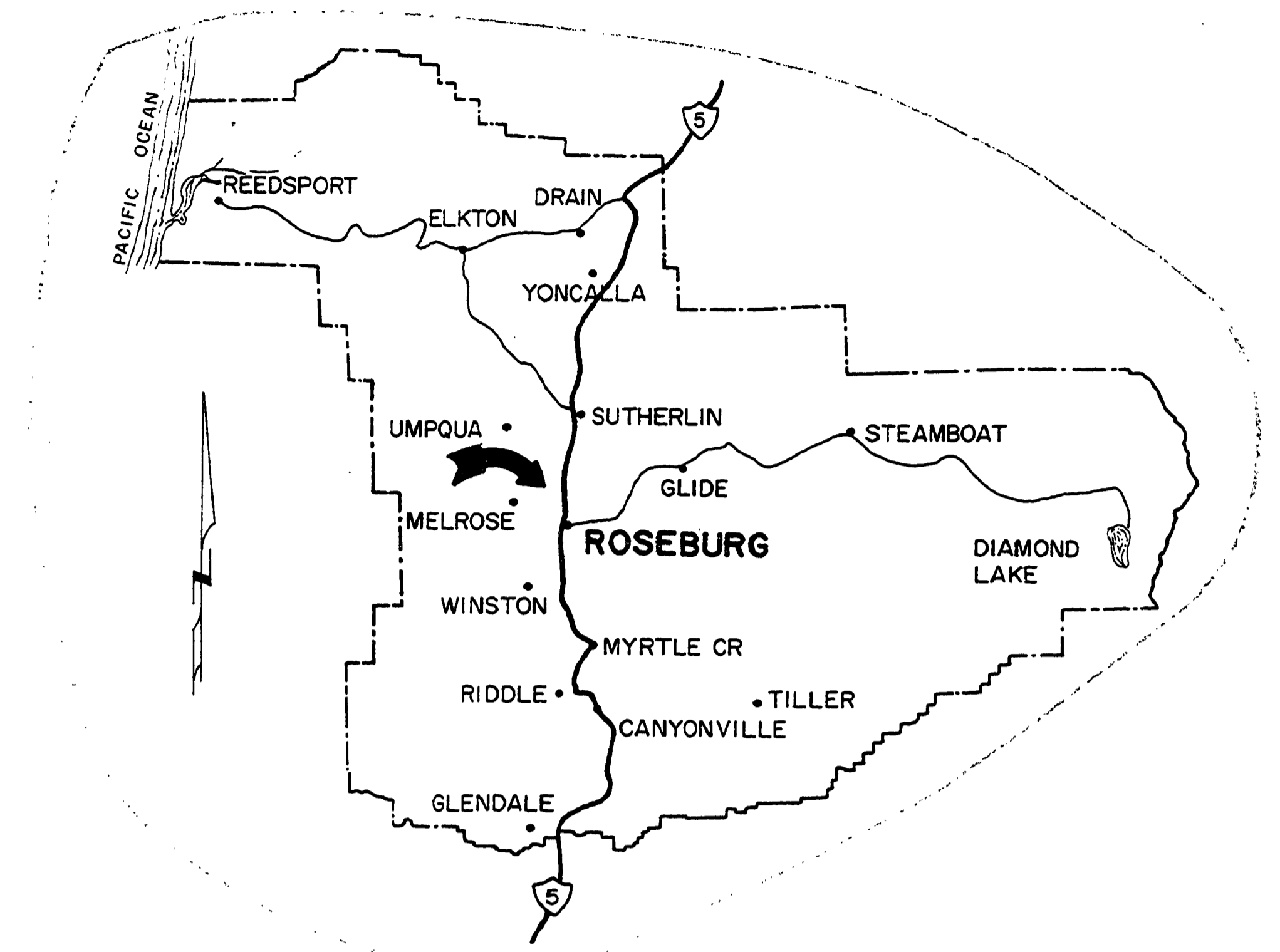


DOUGLAS COUNTY, OREGON
 PLANS FOR PROPOSED PROJECT
 GRADING & SURFACING
DEL VIEW STREETS
ROAD NO. 334
 1973



TYPICAL SECTION FOR CURB ENDS AT STA 4+00 (OSAGE)
 " " " 18+54 (CHEROKEE)

TYPICAL SECTION FOR END A.C. AT STA. 4+00 (OSAGE)
 " " " 18+54 (CHEROKEE)

INDEX OF DRAWINGS

- 1 COVER SHEET
- 2 QUANTITY SUMMARY
- 3 & 4 ROAD PLANS
- 5 STORM SEWER PLANS
- 6 & 7 CUL DE SAC DESIGN
- 8 CLEANOUTS

STD DRAWINGS 2, 4, & 9
 TOTAL 11



8-27-74
 REVISED AS BUILT PH
 DOUGLAS COUNTY ROAD DEPT
DEL VIEW STREETS #334
 1973 SHT 1
 GEORGE E. GRUBB COUNTY ENGR.