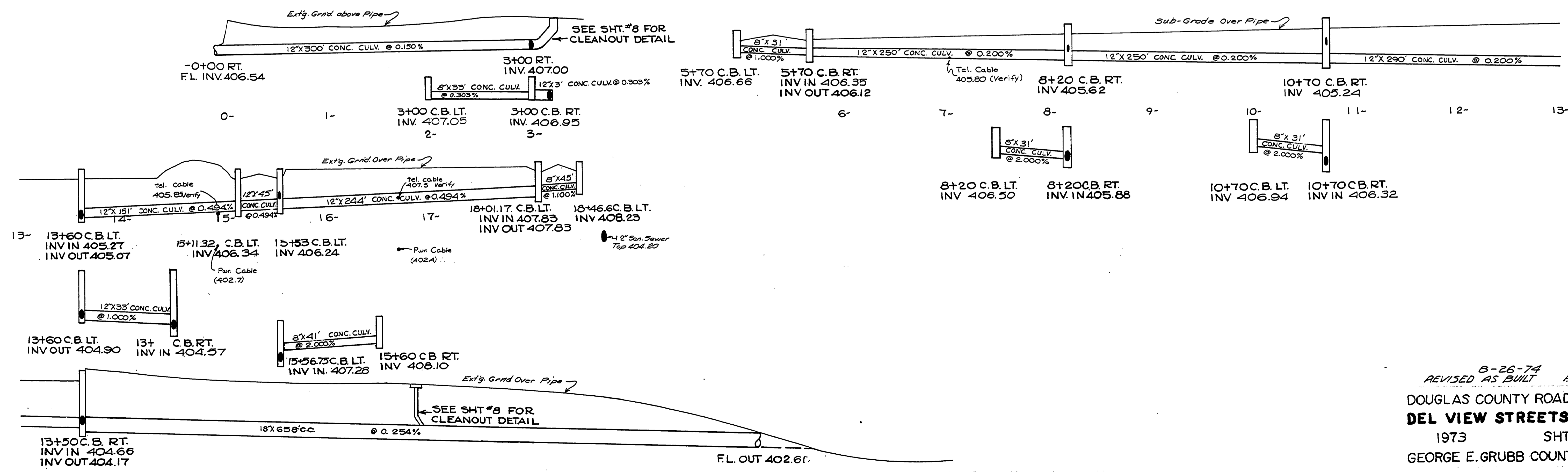
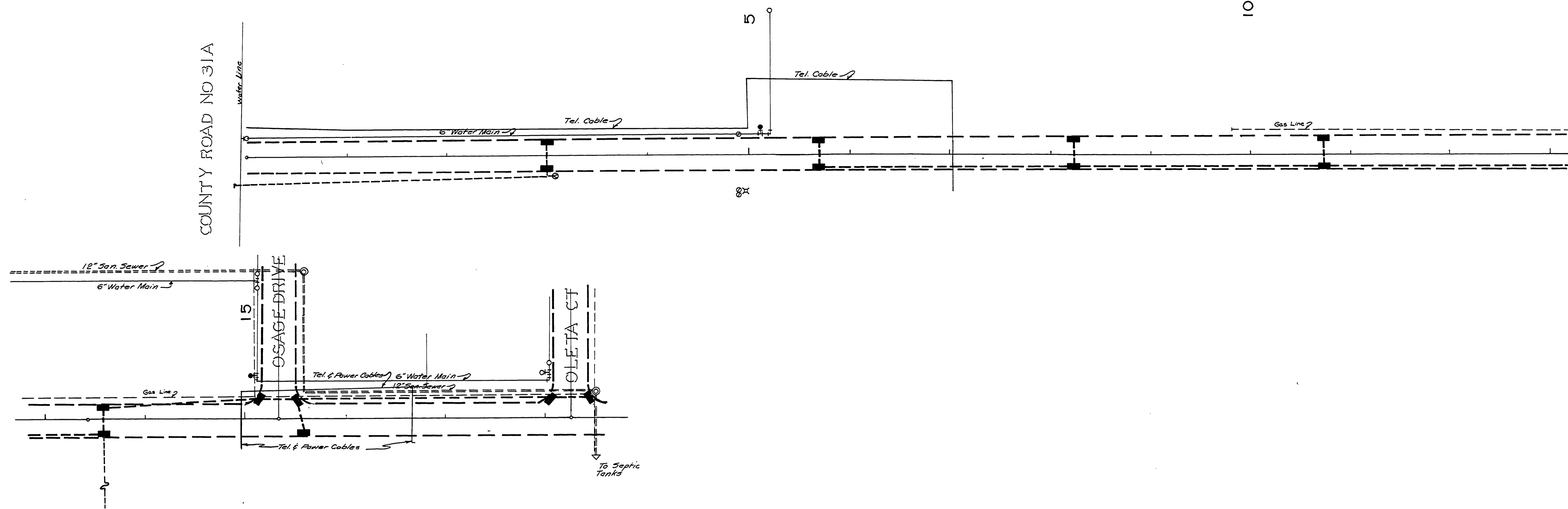


COUNTY ROAD NO 31A



8-26-74
 REVISED AS BUILT P.H.
 DOUGLAS COUNTY ROAD DEPT
 DEL VIEW STREETS #334A
 1973 SHT 5
 GEORGE E. GRUBB COUNTY ENGR.

M.P. 0.00-0.36

CR#334A 1973
 Sht 5 (38)

00000036