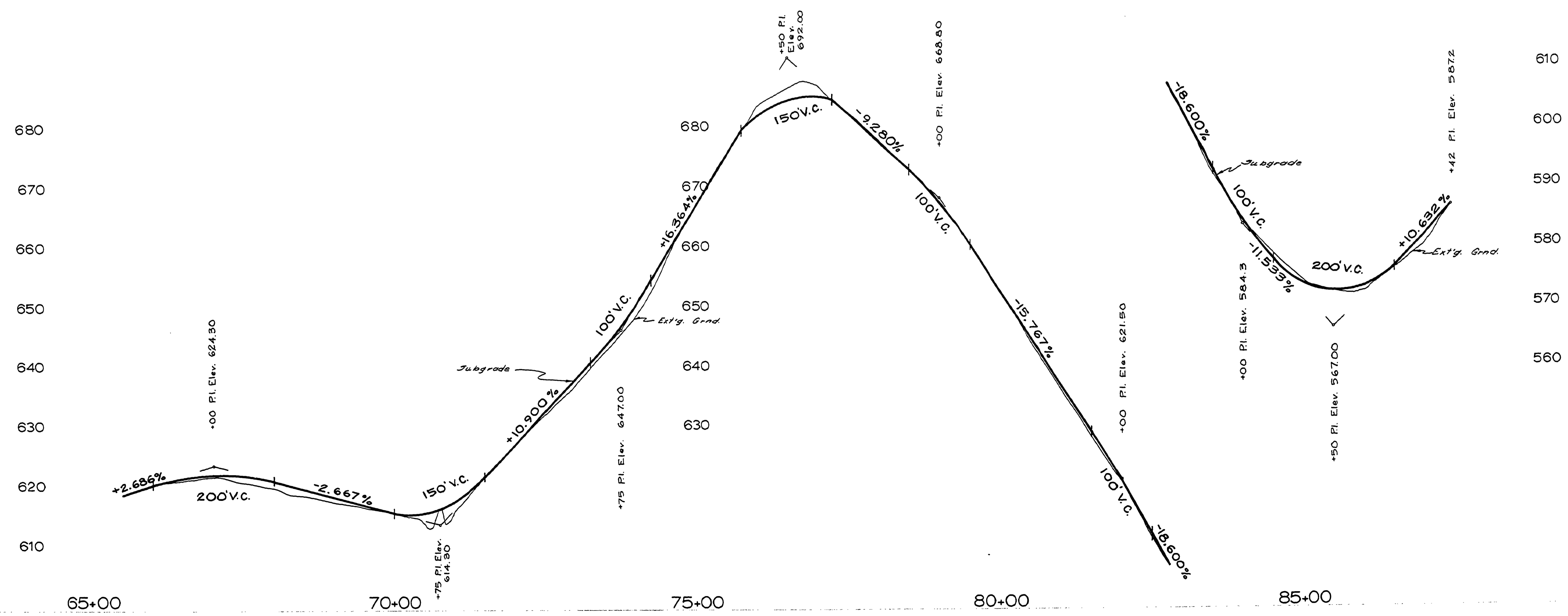
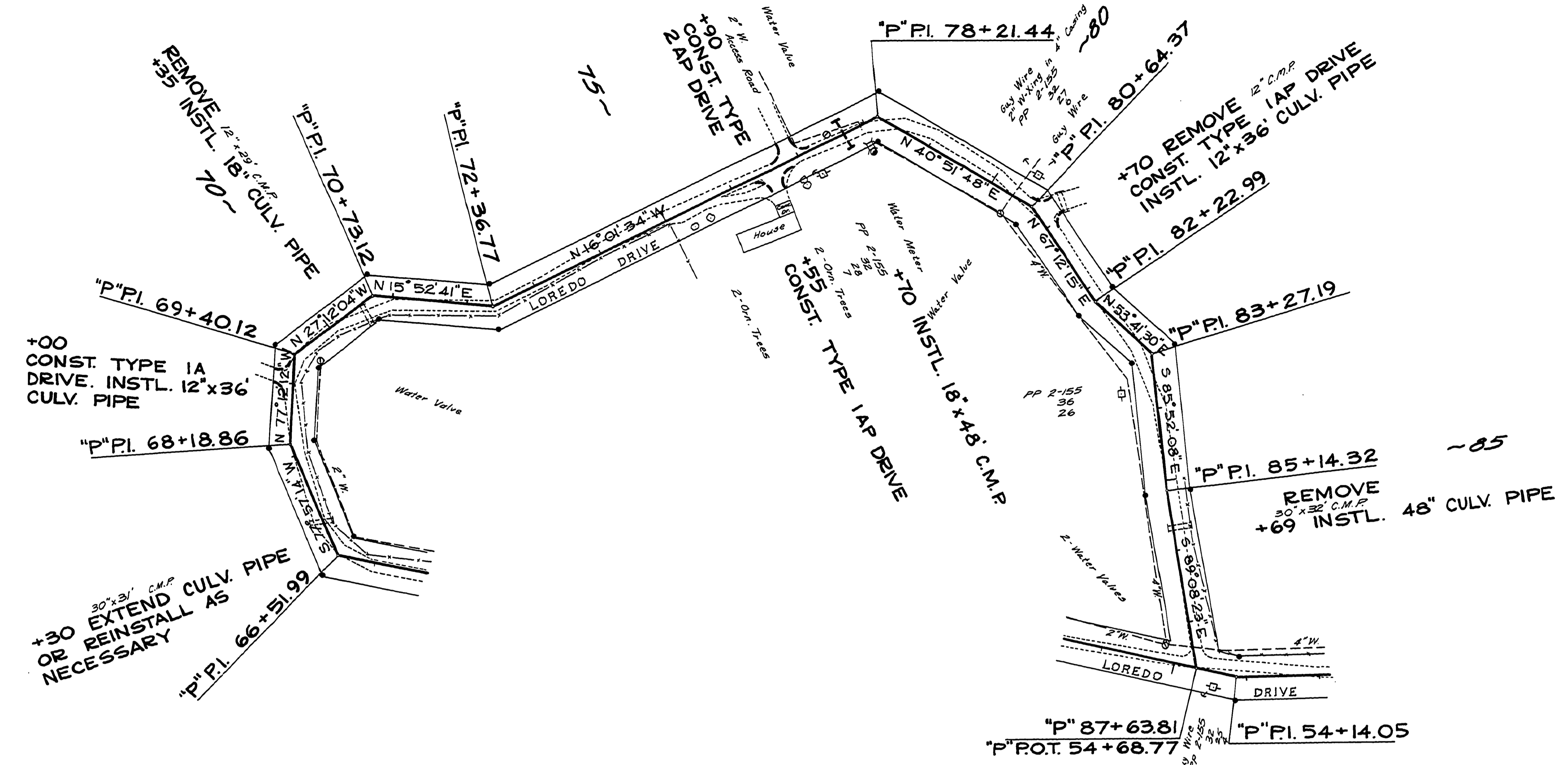
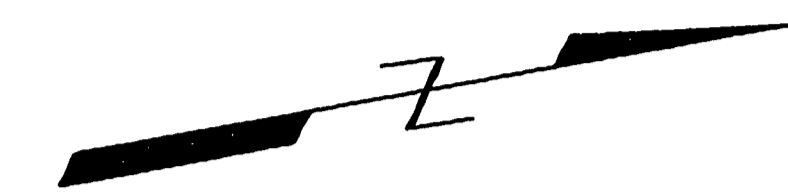


FILED
RECEIVED
JUN 27 1978
COUNTY SURVEYOR
DOUGLAS COUNTY, ORE.



NOT AS BUILT
NOT AS CONSTRUCTED
6-22-78 A.U.F.
DOUGLAS COUNTY
PUBLIC WORKS DEPARTMENT
SAN SOUCI DRIVE #326
1975 SHT. 8
GEORGE E. GRUBB, DIRECTOR

0080126