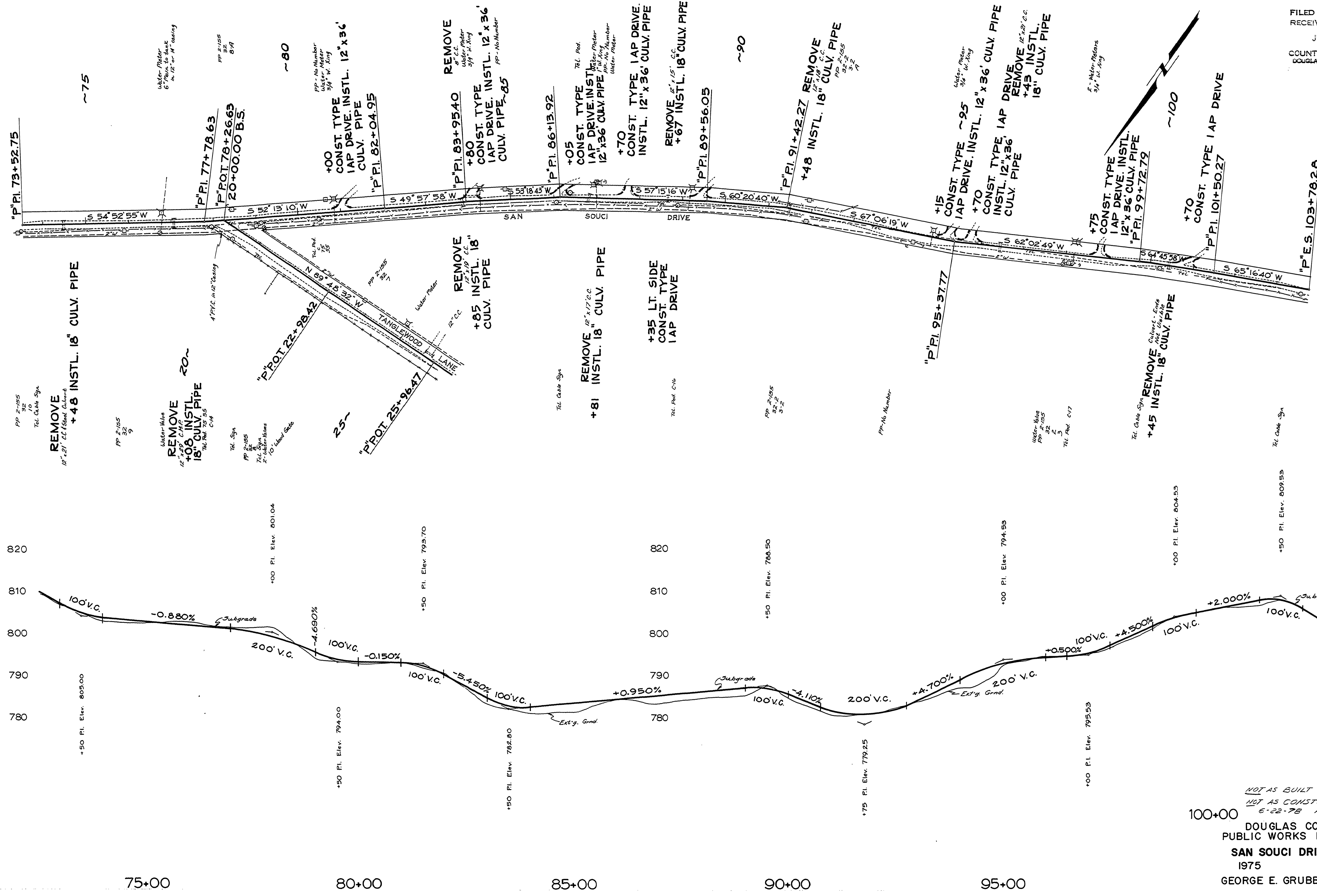


S17 T27S R6W W.M.

FILED
RECEIVED
JUN 27 1975
COUNTY SURVEYOR
DOUGLAS COUNTY, OR



NOT AS BUILT
NOT AS CONSTRUCTED
6-22-78 R.U.F.
DOUGLAS COUNTY
PUBLIC WORKS DEPARTMENT
SAN SOUCI DRIVE #326A
1975 SHT. 5
GEORGE E. GRUBB, DIRECTOR

01380193

M.P. 1.38-1.93

G. Rd #326A 1975
dt. 5 (22)