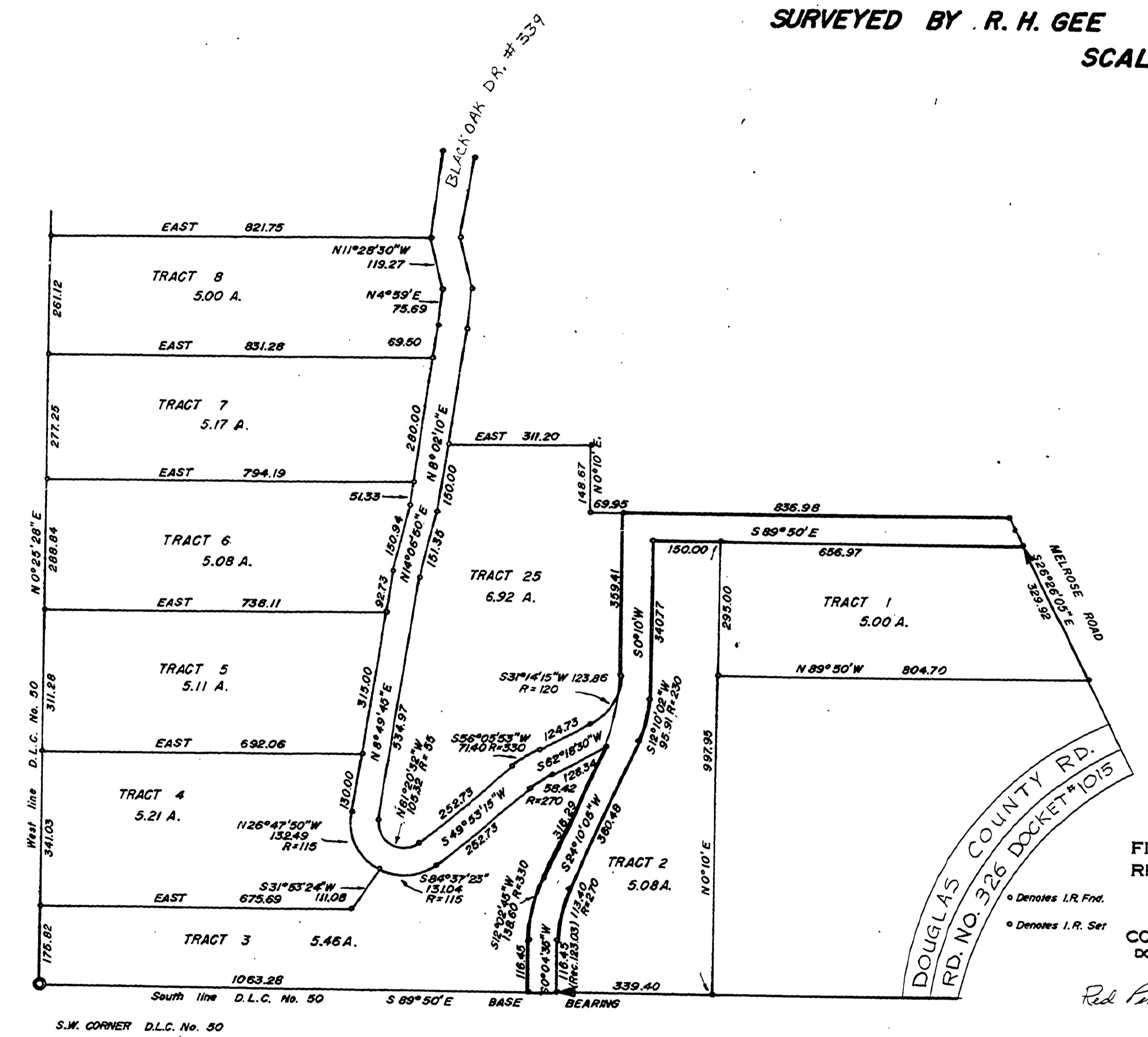


FILED
RECEIVED
JUL 25 1968
COUNTY SURVEYOR
DOUGLAS COUNTY, ORE.

MAP FILE 0040000 P. 17

SURVEY IN WM. MC KINNEY D.L.C. No. 50, T. 27 S., R. 6 W., W.M.
SURVEYED FOR RAY GRAVES
SURVEYED BY R. H. GEE JULY, 1968
SCALE 1" = 200'



FILED
RECEIVED
JAN 14 1971
COUNTY SURVEYOR
DOUGLAS COUNTY, ORE.

Red Pin Added by Road Dept.

DOUGLAS COUNTY ROAD DEPT.
SAN SOUCI DRIVE RD. NO. 326
DATE: SEPT. 9, 1970
GEORGE E. GRUBB COUNTY ENG.

M.P. 0.40 - 0.00

C. Rd. # 326 A

00400000

MAP FILE 0040000 P. 17