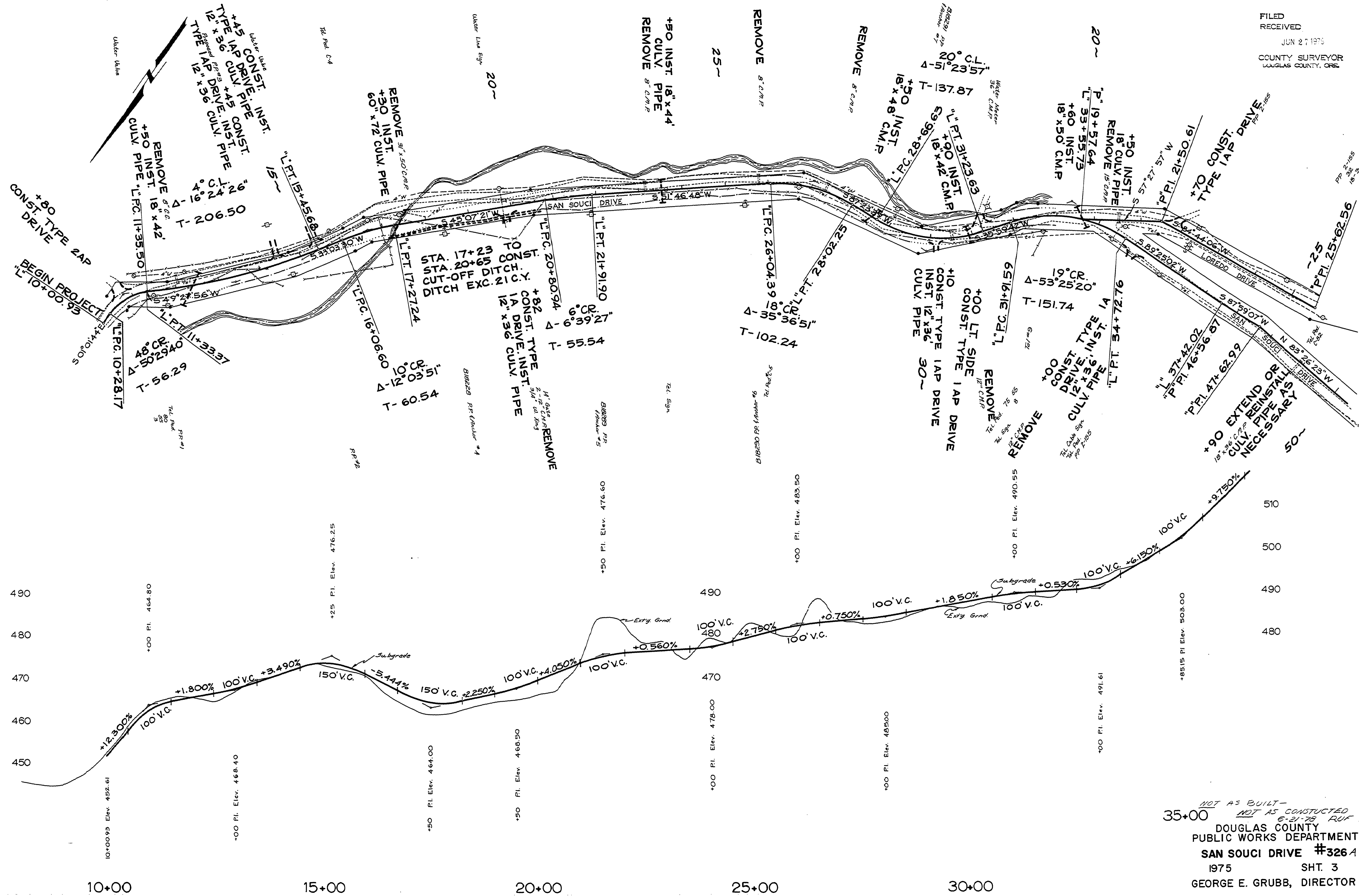


T275  
S16-17 T265 R6W W.M.

FILED  
RECEIVED  
JUN 27 1975  
COUNTY SURVEYOR  
WAGLAS COUNTY, ORE.



NOT AS BUILT -  
NOT AS CONSTRUCTED -  
6-21-75 RUF  
DOUGLAS COUNTY  
PUBLIC WORKS DEPARTMENT  
SAN SOUCI DRIVE #326A  
1975 SHT. 3  
GEORGE E. GRUBB, DIRECTOR

00320091

M.P. 0.32-0.91

1975  
G.R.# 326A  
Sht. 3 (20)