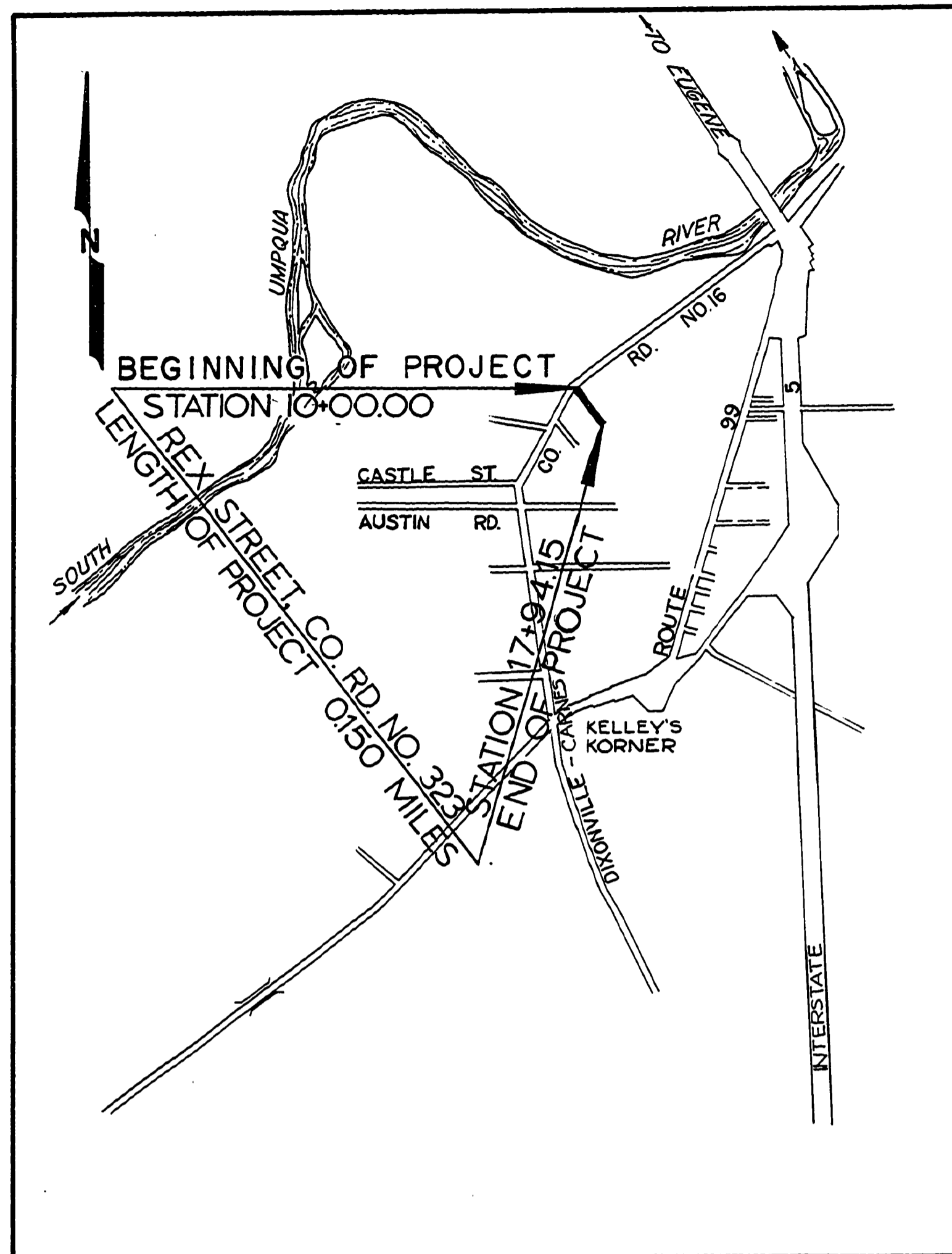


PLAN	SUBMITTED	DATE
	PLOTTED	BY
	DESIGNED	BY
	CHECKED	BY
	APPROVED	BY
	NO. 10	

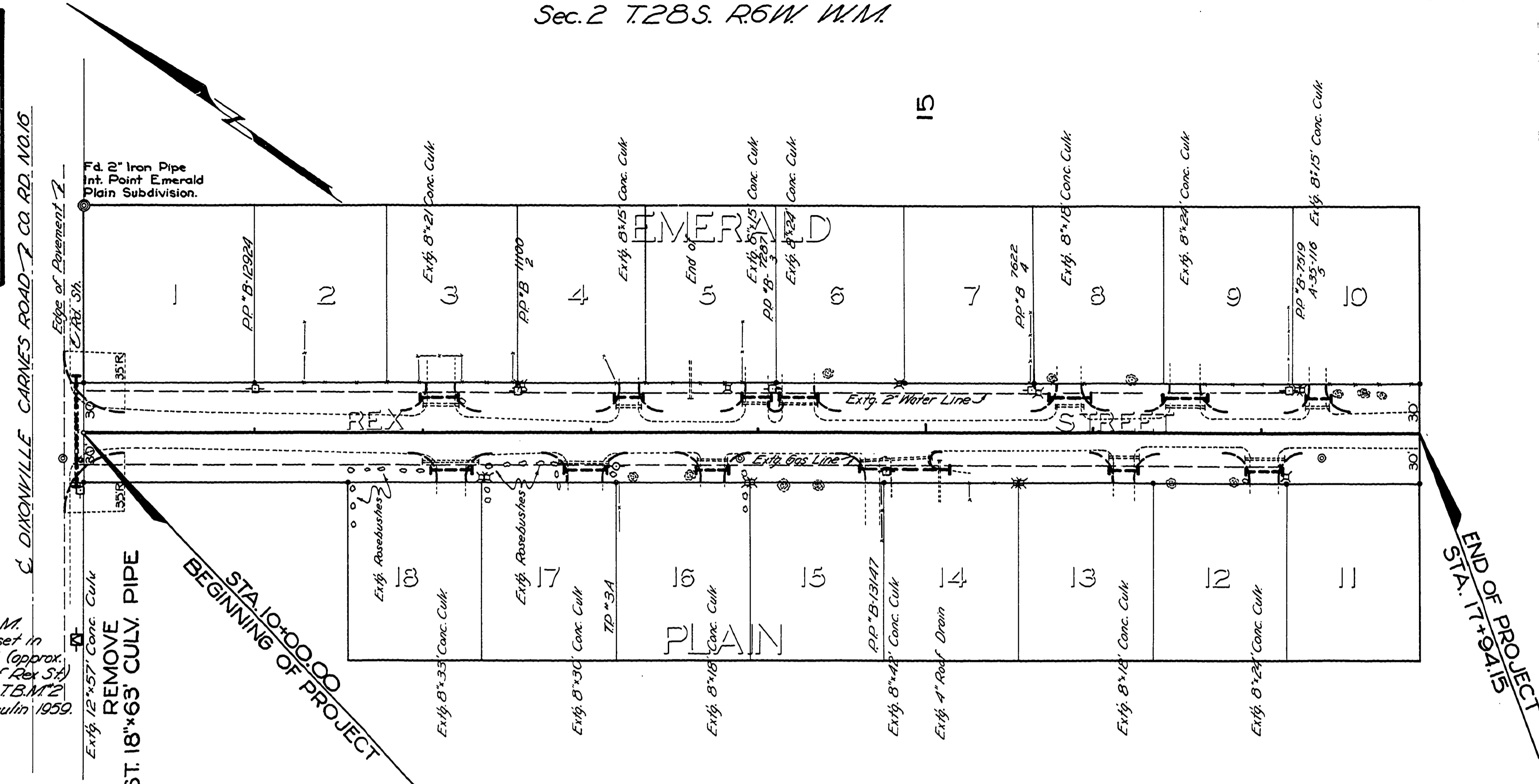
PROFILE	EXAMINED	DATE
	PLOTTED	BY
	DESIGNED	BY
	CHECKED	BY
	APPROVED	BY
	NO. 10	



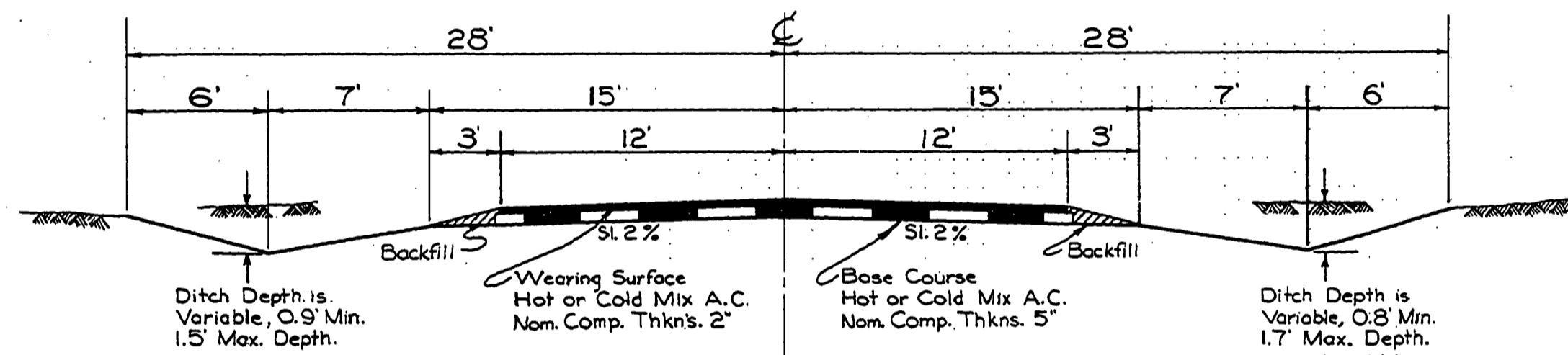
VICINITY MAP

QUANTITY SUMMARY		
ITEM	UNIT	QUANTITY
1. CLEARING & GRUBBING	LUMP SUM	ALL
2. GENERAL EXCAVATION (UNCLASS)	CU. YD.	660
3. FINISHING ROADBED & SLOPES	LUMP SUM	ALL
4. 12" CULVERT PIPE	LIN. FT.	321
5. 18" CULVERT PIPE	LIN. FT.	63
6. ASPHALTIC CONC. BASE	TON	591
7. ASPH. CONC. WEARING SURFACE	TON	237
8. ASPHALTIC CONC. DRIVE	SQ. YD.	590

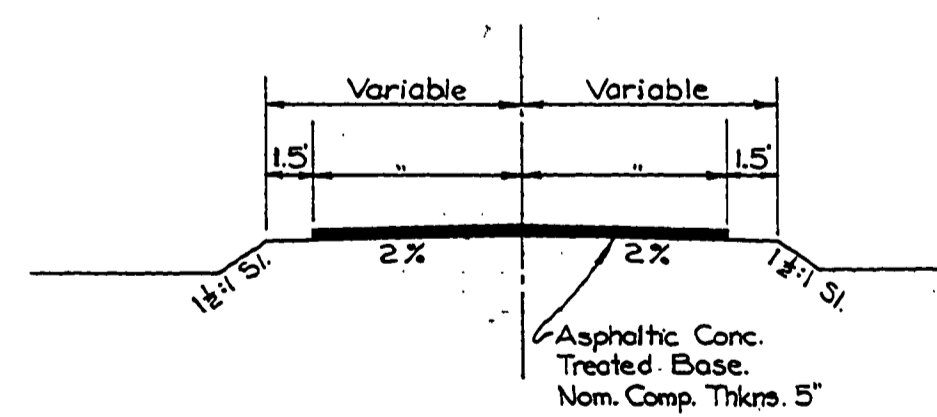
PROJECT T.B.M.
 Boot Spike set in
 PP# B 9375 (approx.
 125' Sthly. of Rex St)
 Elev. 492.32. T.B.M. 2
 set by Wm. Paulin 1959.



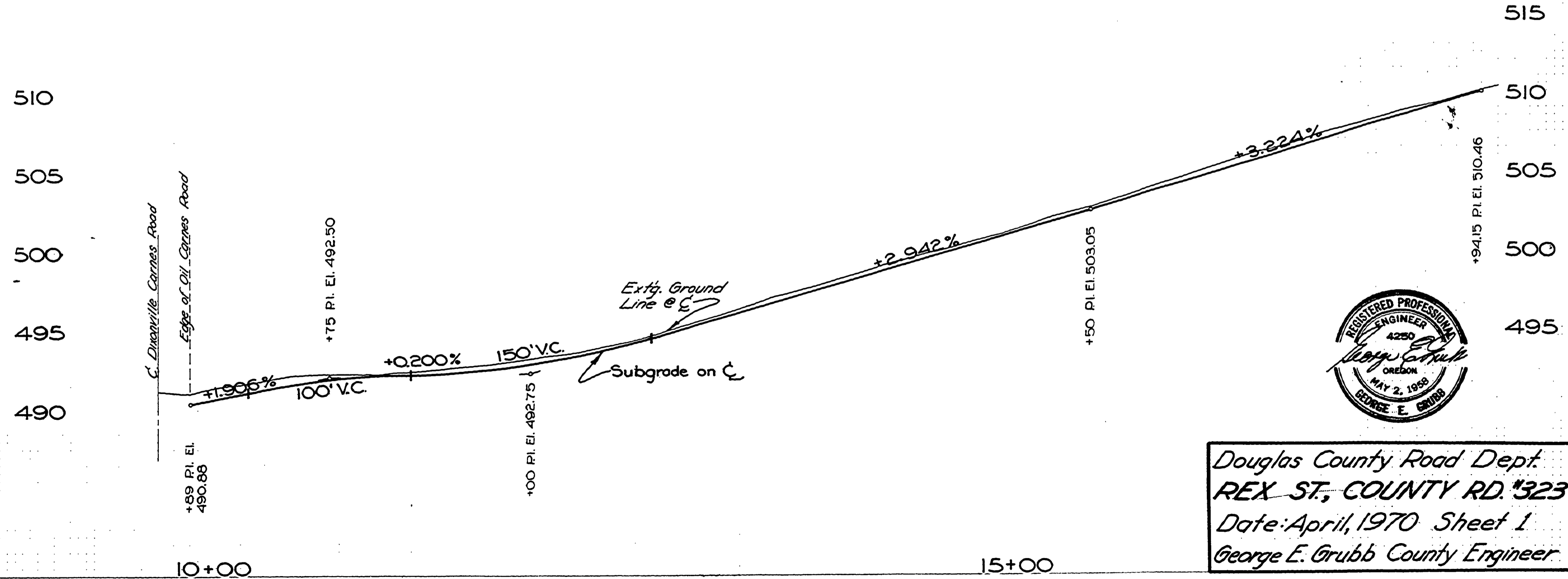
CONST. 13 DRIVES w/12" CULVERT PIPE AS REQUIRED.
 NEW DRIVES TO BE EQUAL IN SIZE TO EXTG. DRIVES.
 ALL RADII TO BE 15'



TYPICAL SECTION
 STA. 10+00 TO STA.
 17+94.15 END OF
 PROJECT.



DRIVEWAY TYPICAL SECTION



Douglas County Road Dept.
 REX ST., COUNTY RD. 323
 Date: April, 1970 Sheet 1
 George E. Grubb County Engineer.

00000015