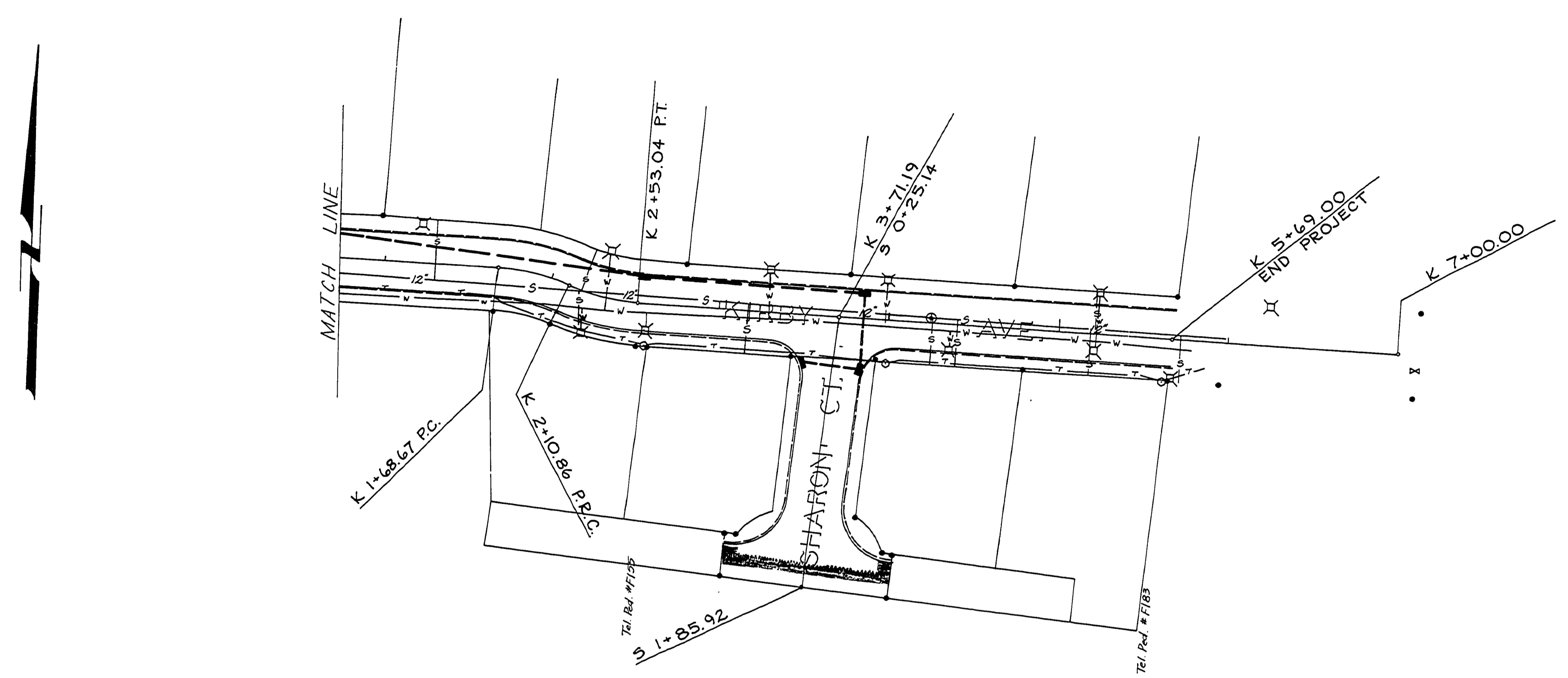
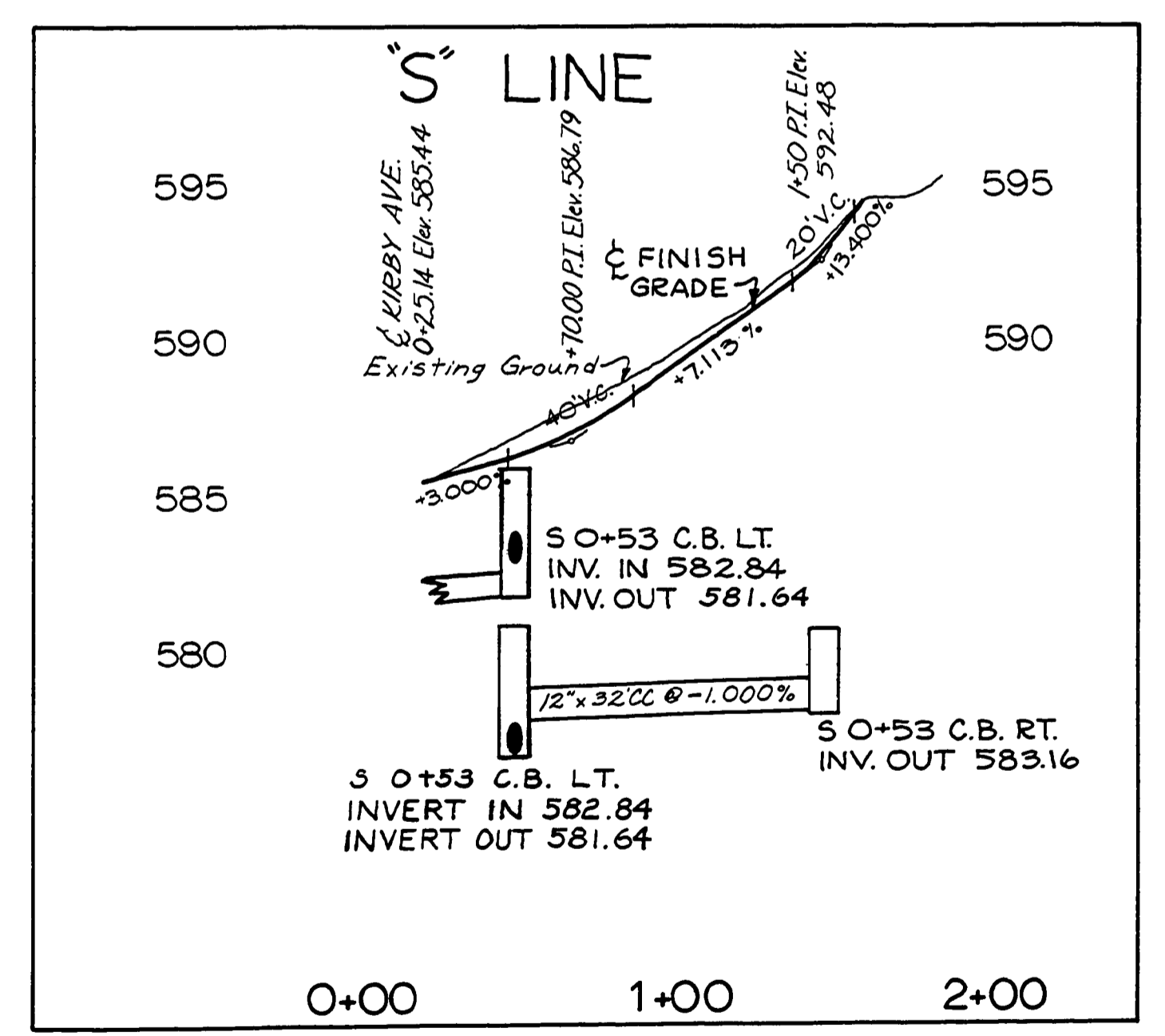
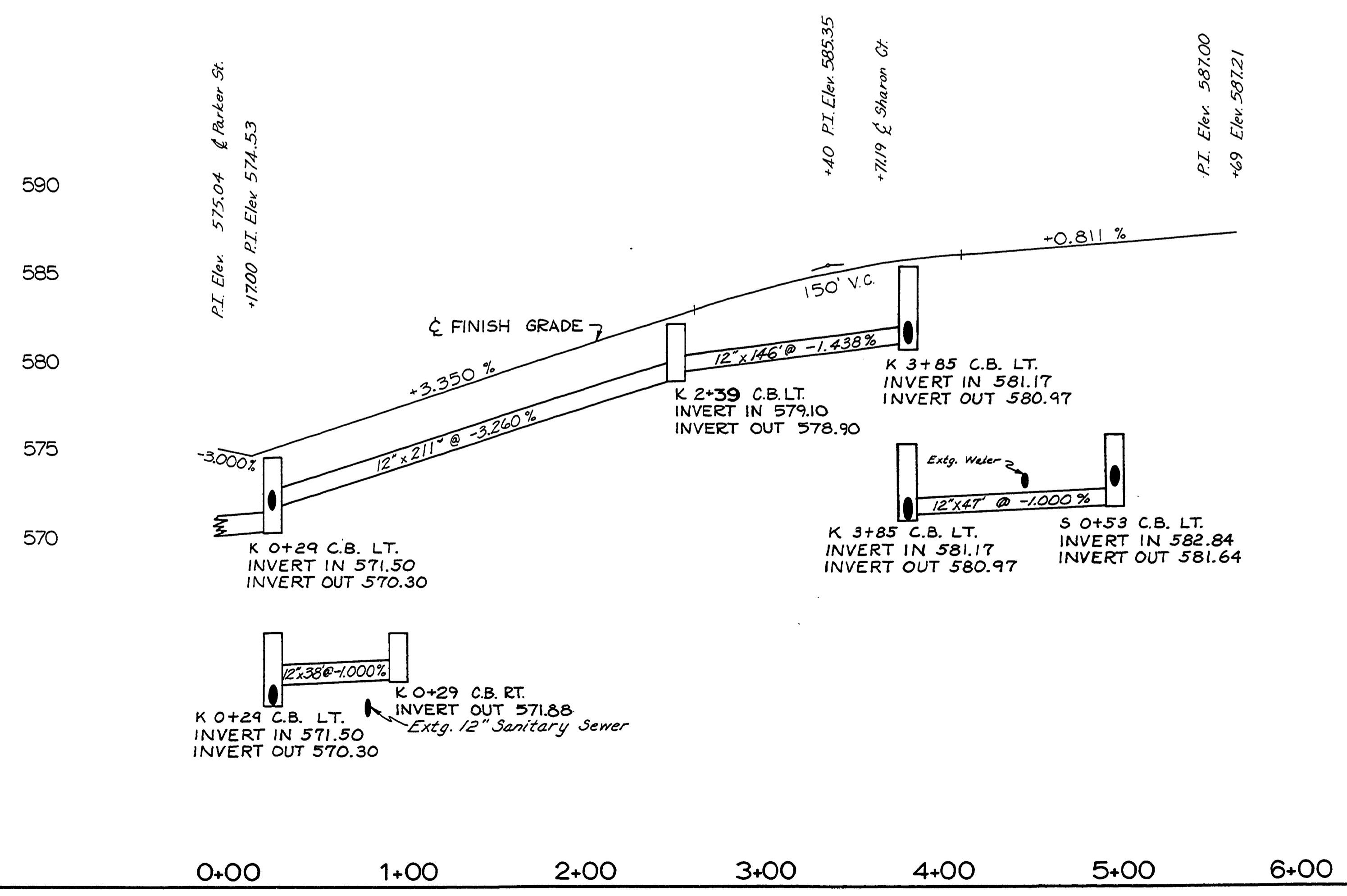


SEC. 6&7, T27S, R5W, W.M.

FILED
RECEIVED
AUG 1 1978
SURVEYOR
CLATSOP COUNTY, ORE



NOTE: VERIFY LOCATION OF EXISTING UNDERGROUND UTILITIES AT POTENTIALLY CONFLICTING LOCATIONS



AS BUILT 7/31/79 L.L.
DOUGLAS COUNTY
PUBLIC WORKS DEPARTMENT
PARKER RD., KIRBY AVE. &
SHARON CT. Lo. #322
1978 SHT. 6
GEORGE E. GRUBB, DIRECTOR

00010013