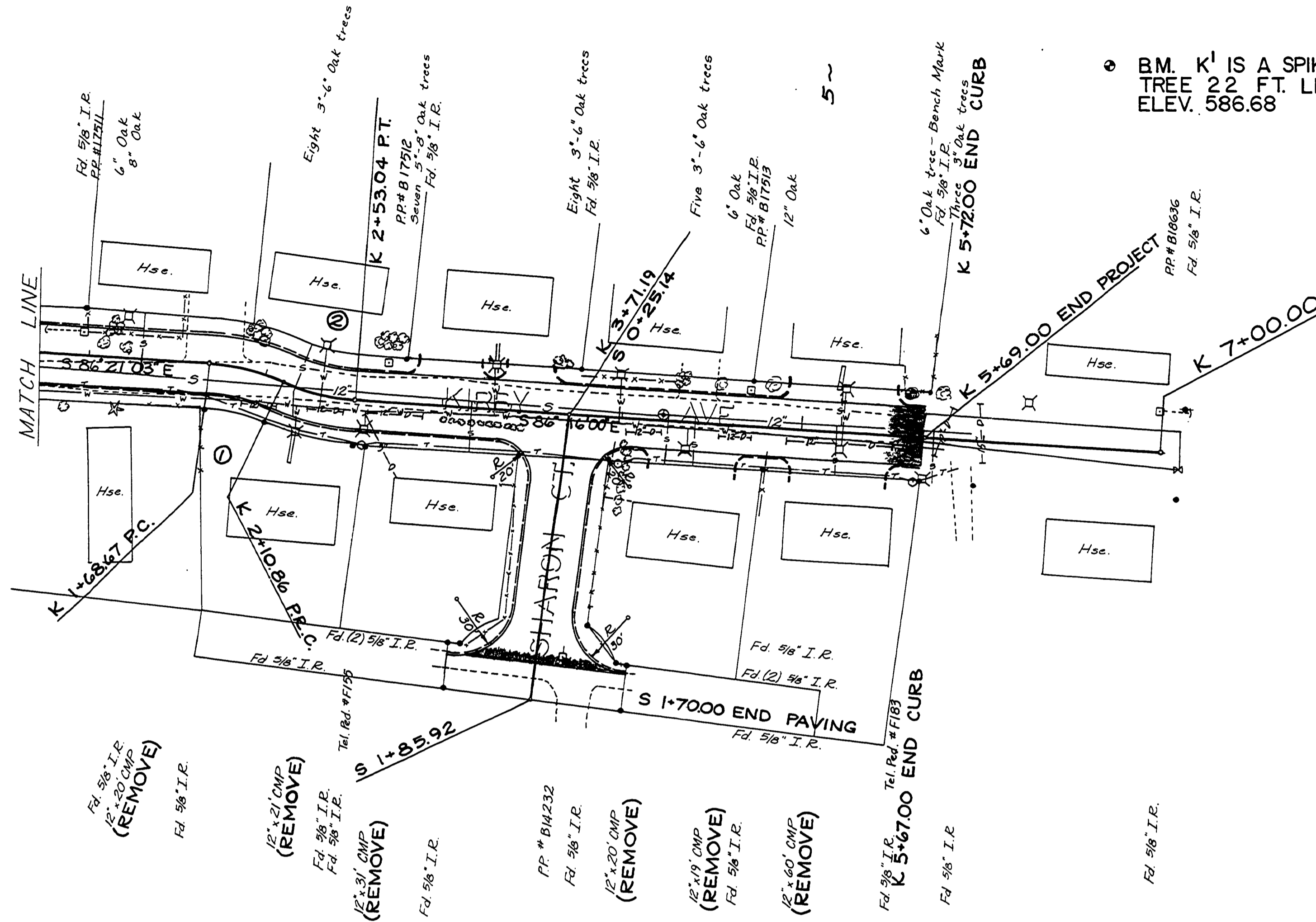
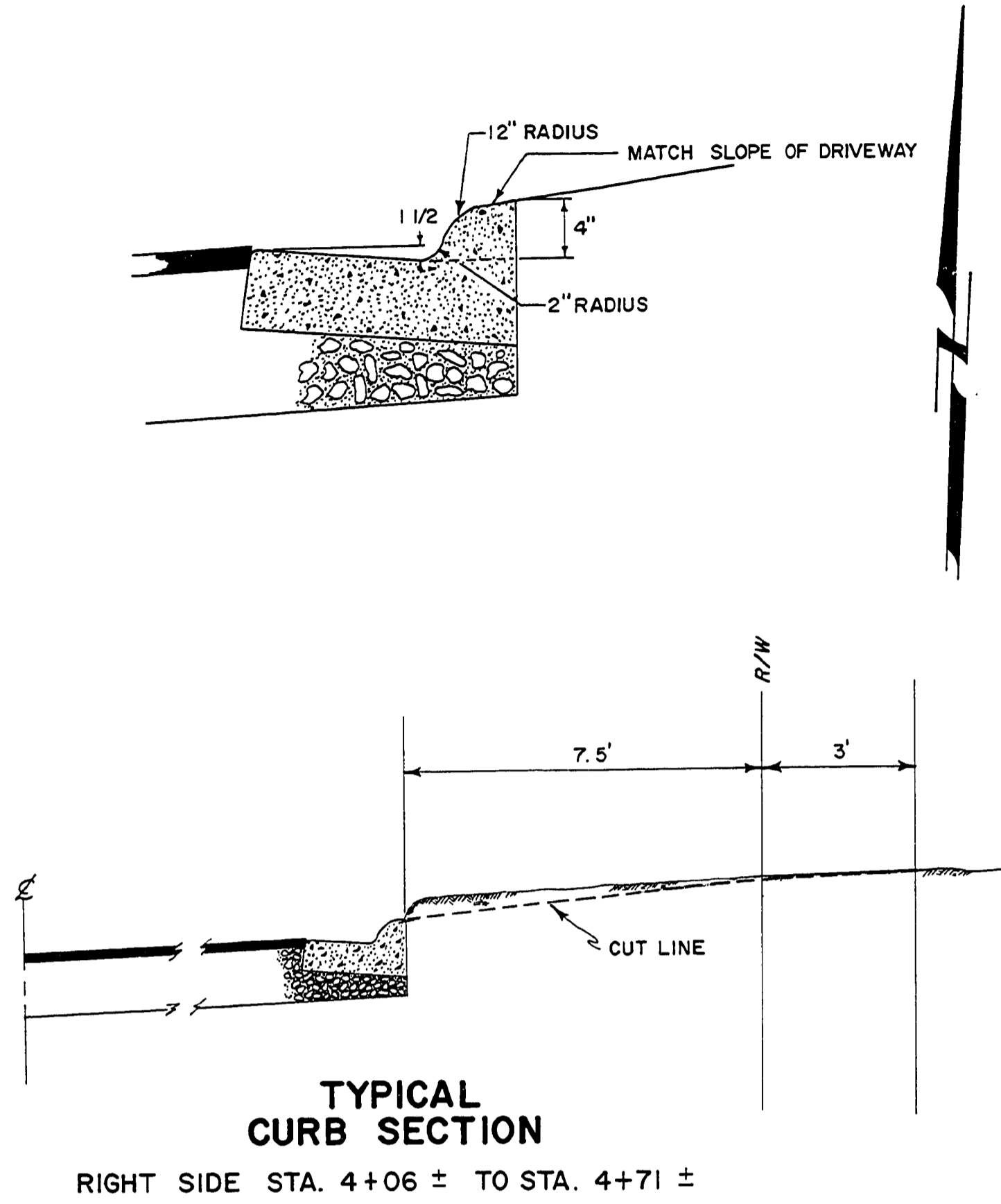
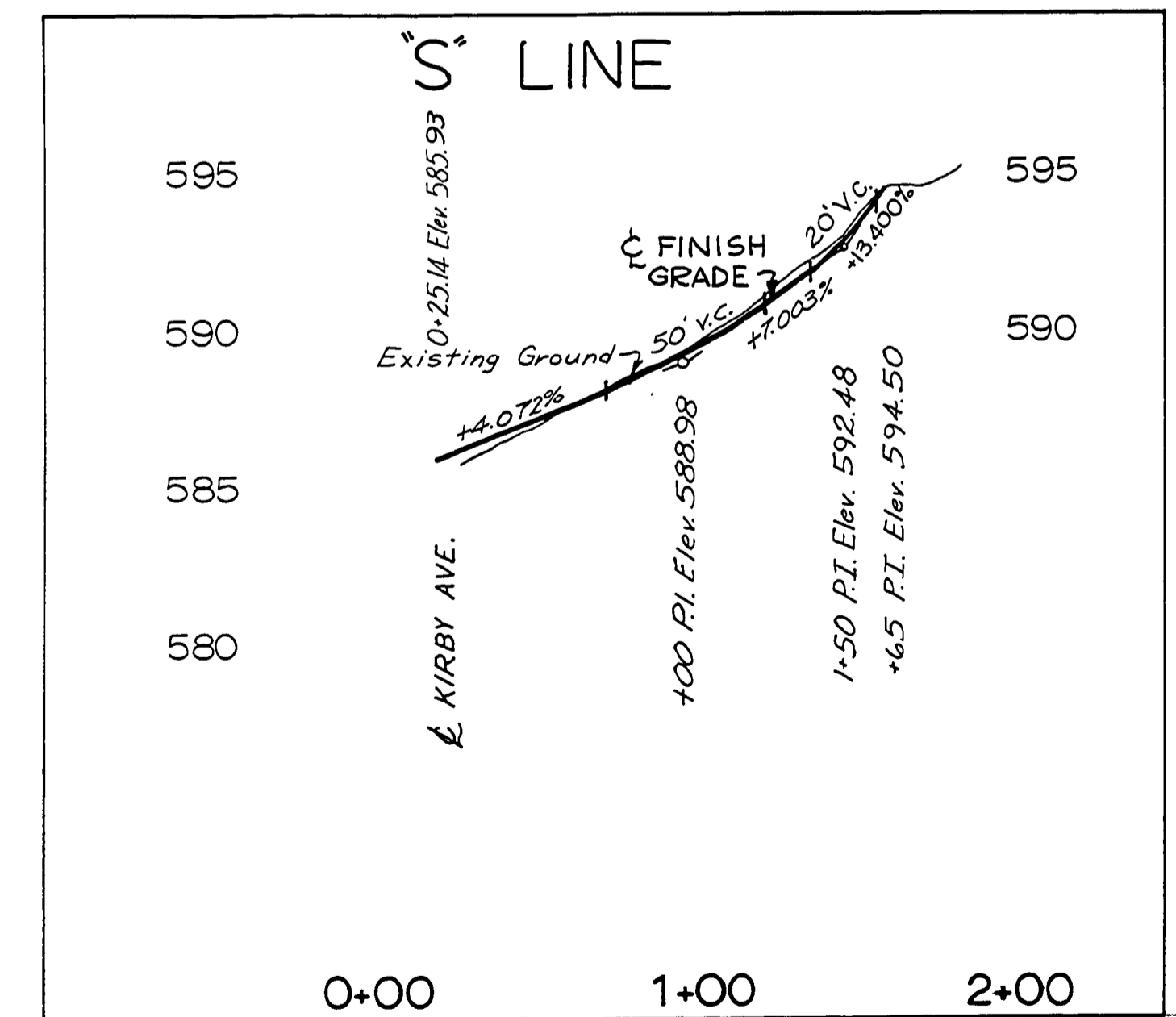
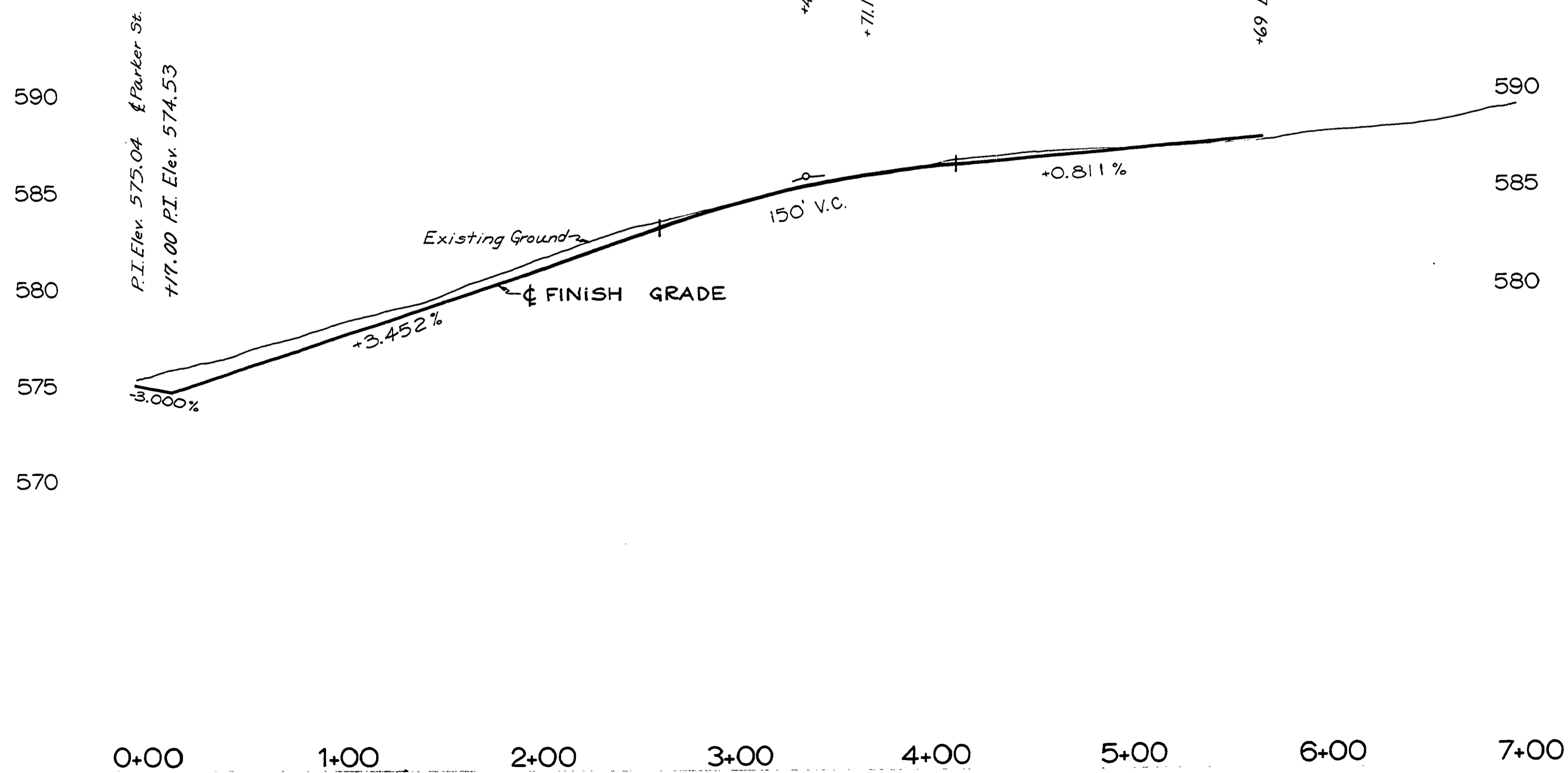


SEC. 6 & 7, T27S, R5W, W.M.



• B.M. K¹ IS A SPIKE IN A 6" OAK TREE 22 FT. LEFT OF STA. 5+60. ELEV. 586.68

- ① 49° 13' 39" CR
Δ-20° 46' 06"
T-21.32'
- ② 48° 49' 59" CL
Δ-20° 36' 00"
T-21.32'



DOUGLAS COUNTY
PUBLIC WORKS DEPARTMENT
PARKER RD., KIRBY AVE. &
SHARON CT. RD. 322
1978 SHEET 4
AS BUILT 7/31/79 LL. GEORGE E. GRUBB, DIRECTOR

00010012