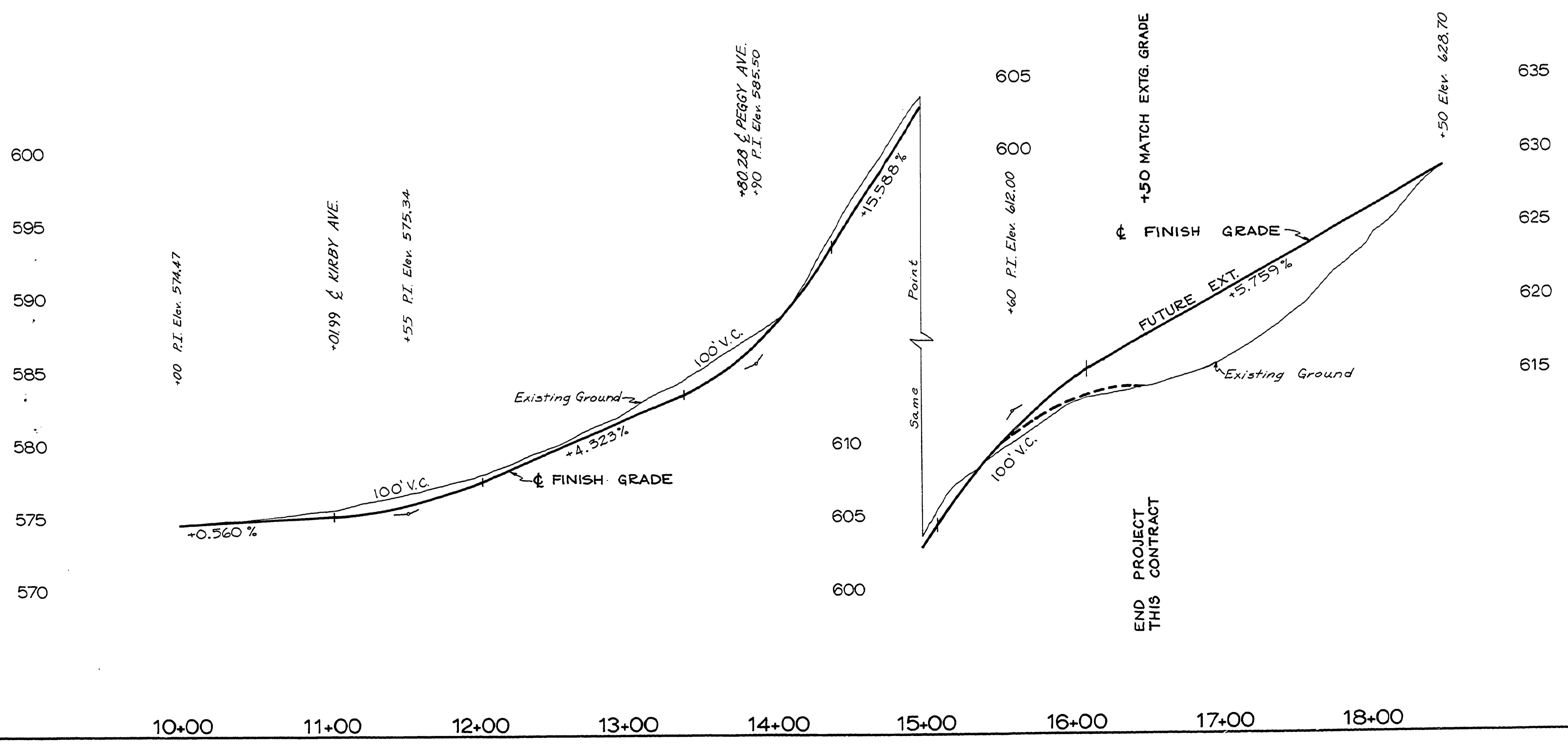
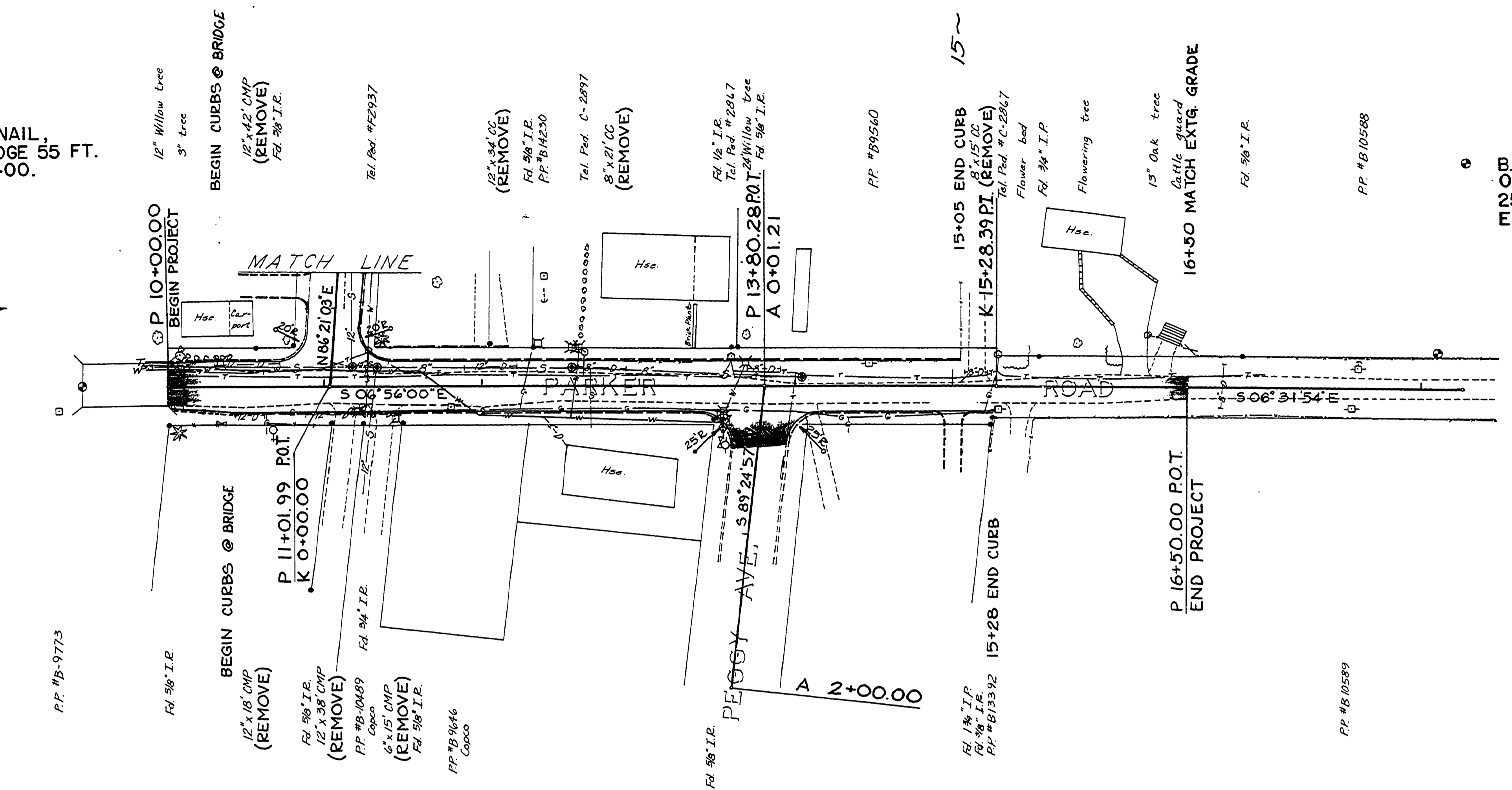


SEC. 6 & 7, T27S, R5W, W.M.

B.M. P¹ IS A P.K. NAIL,
NORTH END OF BRIDGE 55 FT.
NORTH OF STA. 10+00.
ELEV. 574.17

B.M. P³ IS A LARGE NAIL IN THE BASE
OF A 3 1/2" OAK TREE LOCATED
25 FT. LEFT OF STA. 18+16.
ELEV. 628.70

FILED
RECEIVED
AUG 1 1978
COUNTY SURVEYOR
DOUGLAS COUNTY, ORE



AS BUILT 7/31/79 L.L.
DOUGLAS COUNTY
PUBLIC WORKS DEPARTMENT
PARKER RD., KIRBY AVE. &
SHARON CT. RD. 322
1978 SHT. 3
GEORGE E. GRUBB, DIRECTOR