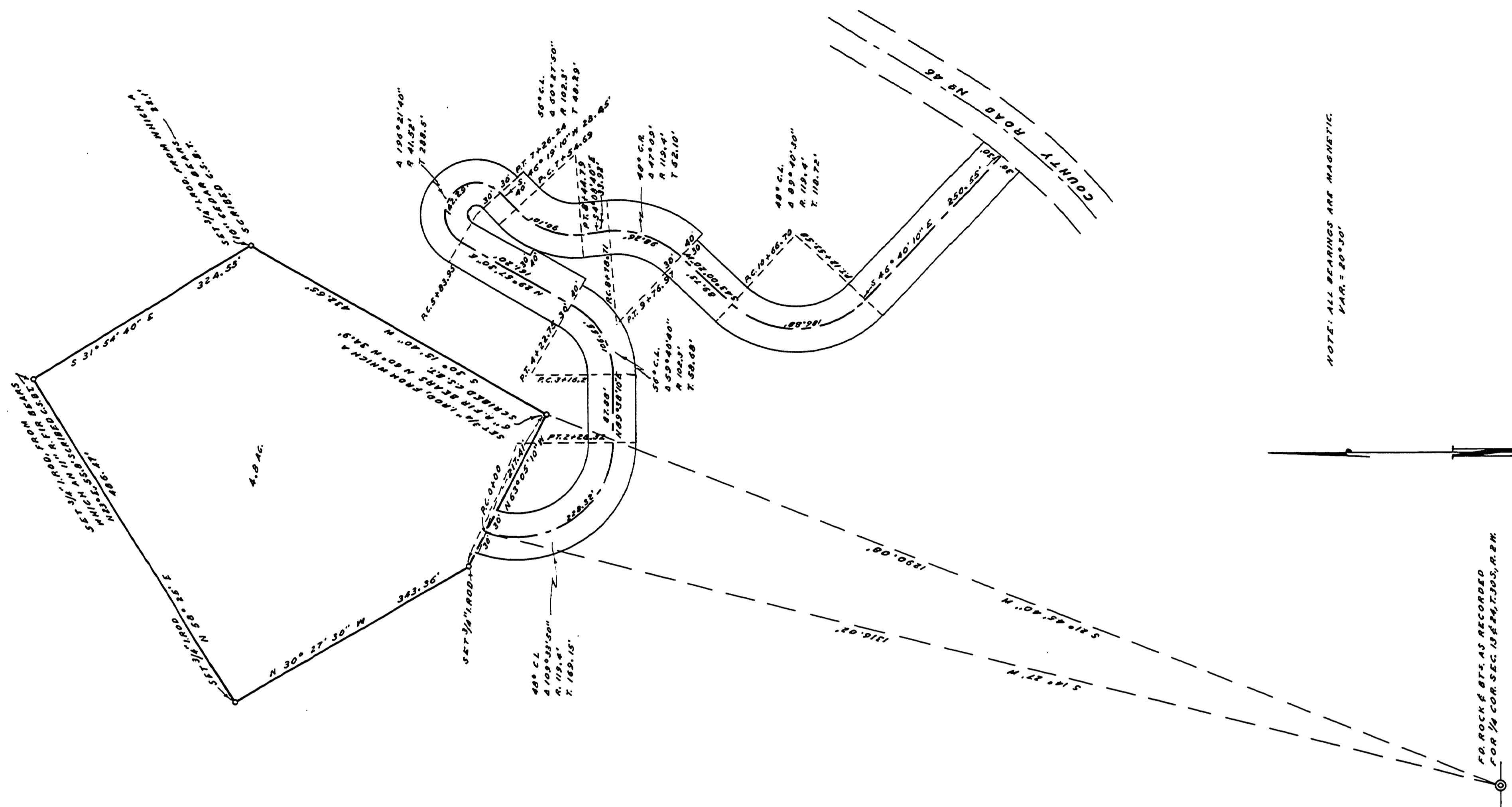


? T. 30 S. R. 2 W. SEC. 13 ?

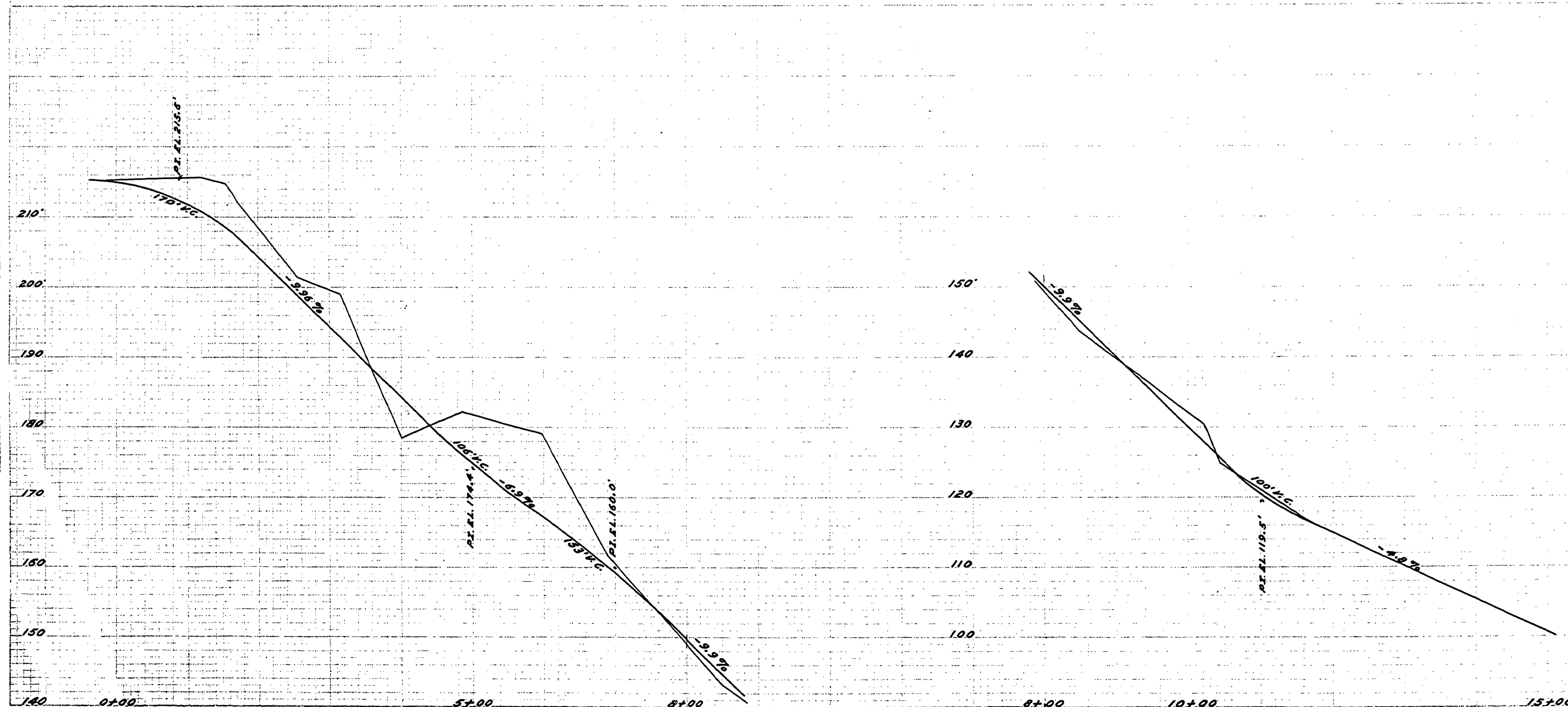
FILED	BY	DATE



NOTE: ALL BEARINGS ARE MAGNETIC
YEAR 1960

PA ROCK SET AS RECORDED
FOR 1/4 COR SEC. 16, T. 30 S., R. 2 W.

ORIGINAL SURVEY	NO.



Approved by order of the County Court
this 10 Day of July 1962.

V.T. Jackson
JUDGE
E. Metzger
COMMISSIONER
Ray E. Coe
COMMISSIONER



FILED
RECEIVED
FEB 13 1963
COUNTY SURVEYOR
DOUGLAS COUNTY, ORE.

Approved *A.H. May* Date 7/10/62
COUNTY ENGINEER

FILED
RECEIVED
FEB 15 1963
COUNTY SURVEYOR
DOUGLAS COUNTY, ORE.

Douglas County Road Dept.
South Umpqua Dump Rd. #319
Date 6-14-62 Sheet 1 of 1
A.H. May Co. Engineer

not a Co. Rd.

ROAD 0319