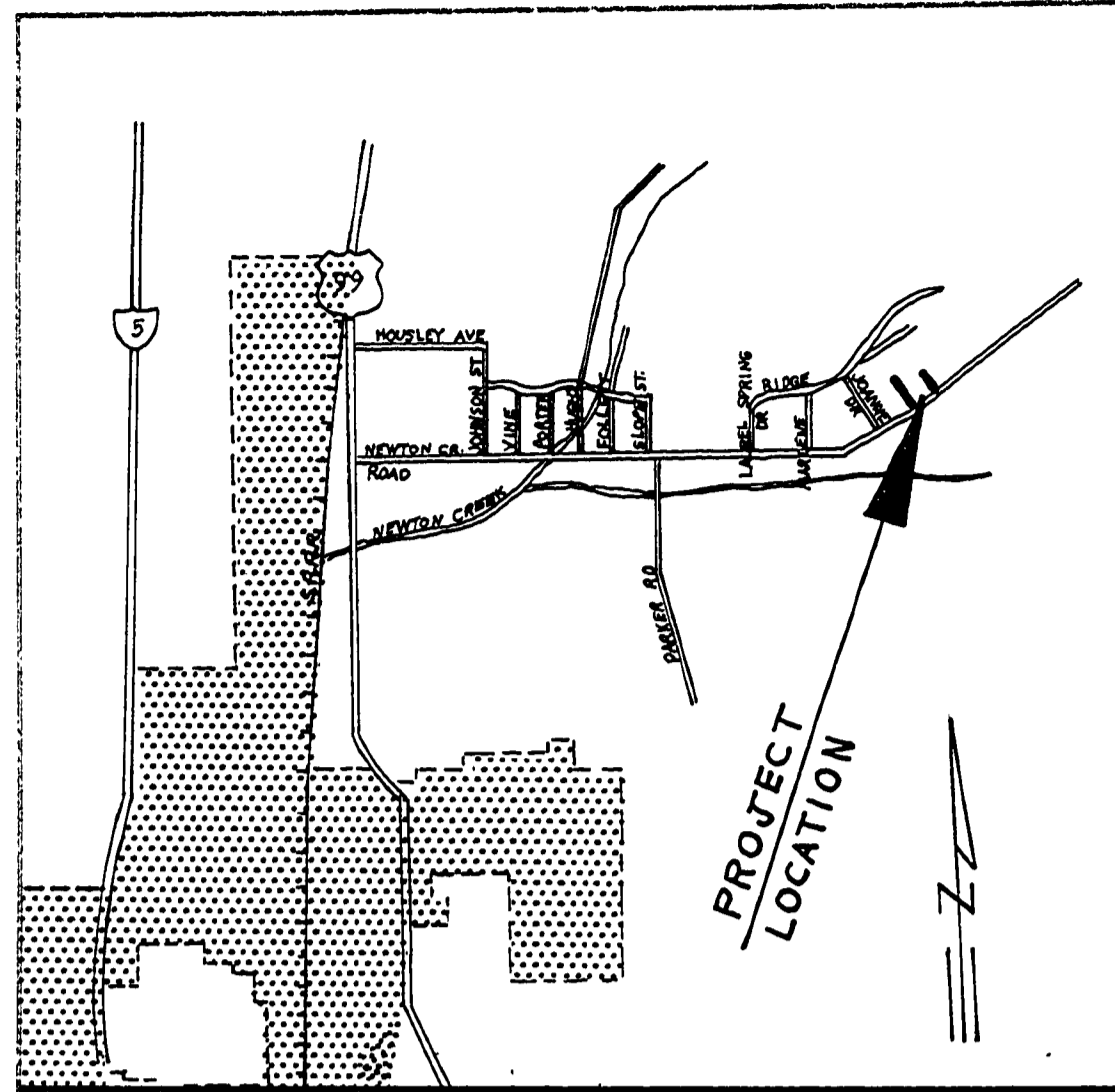


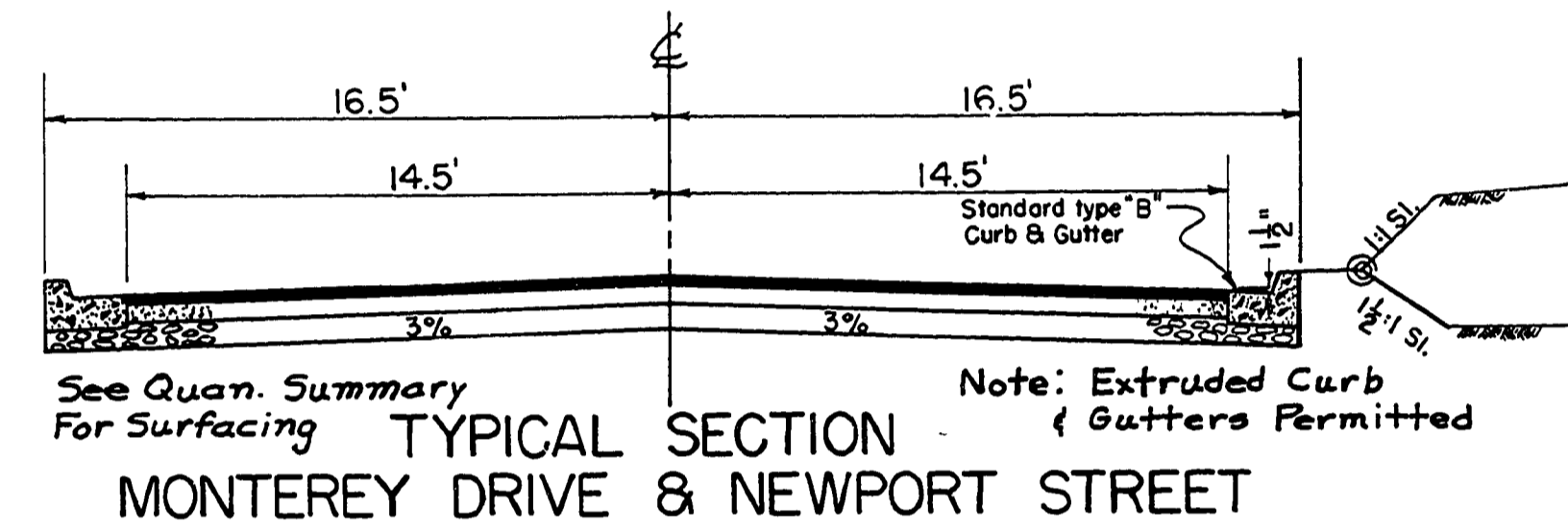
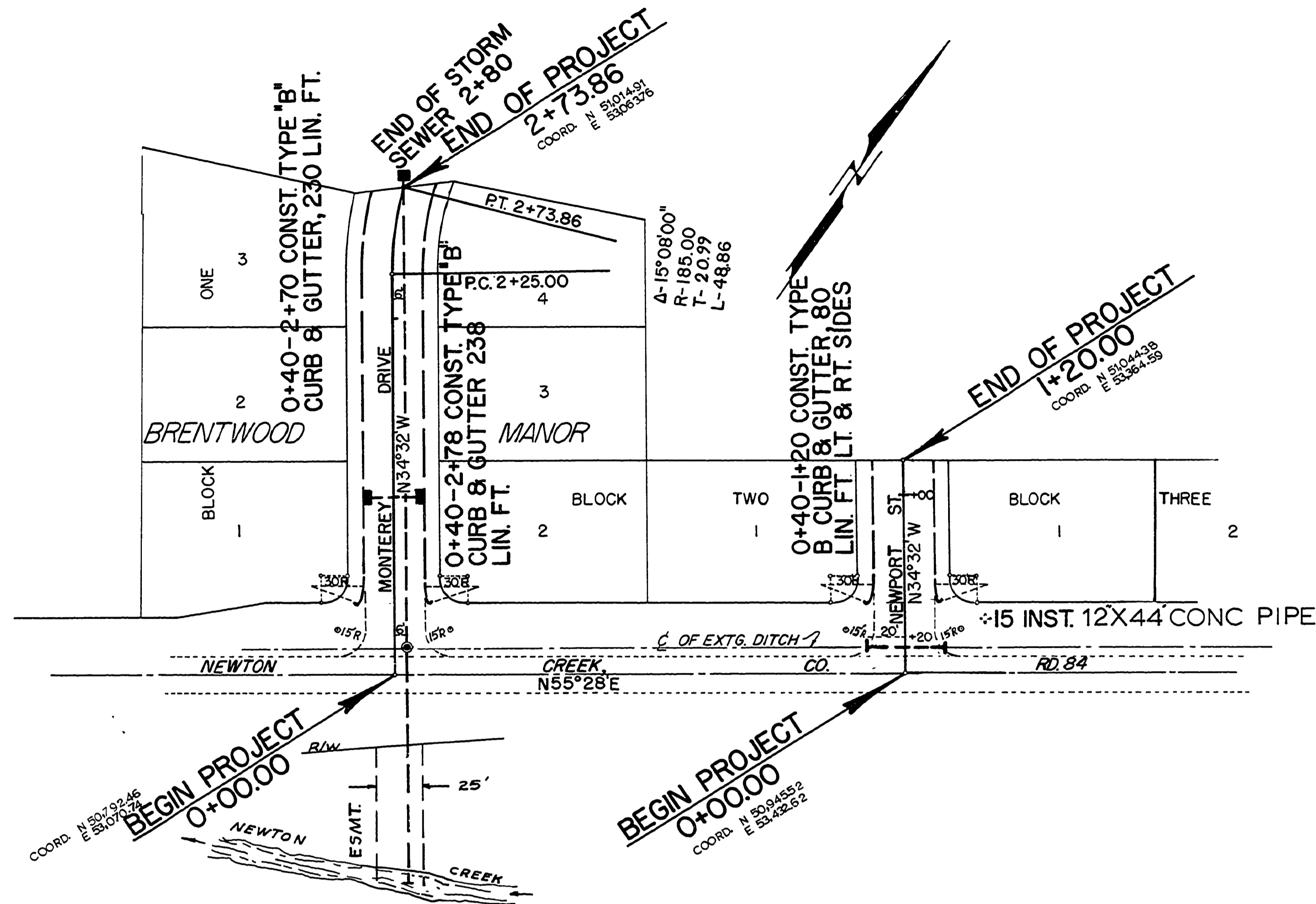
THIS SET OF PLANS CONTAIN
 1 SHEET ROAD PLANS
 1 QUANTITY SUMMARY
 STD. DWGS 2, 3, & 4
 TOTAL 5 SHEETS

FILED
 RECEIVED
 JUN 27 1970
 COUNTY SURVEYOR
 DOUGLAS COUNTY, ILL.

Sec. 6 T27S. R5W W.M.



VICINITY MAP



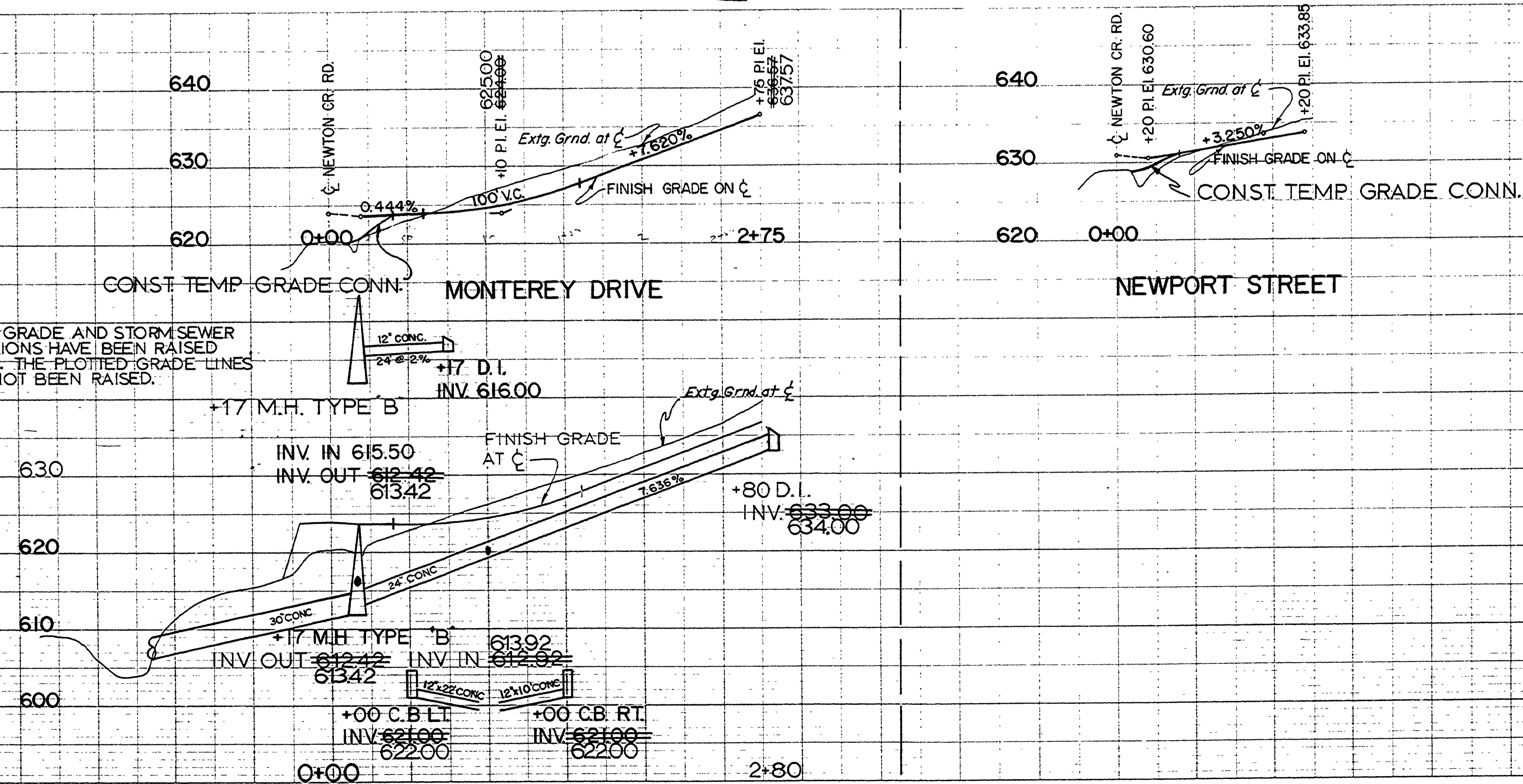
See Quan. Summary For Surfacing
 Note: Extruded Curb & Gutters Permitted

NOTE: © SIGNIFIES THE POINT TO WHICH THE SLOPE STAKE REFERS

- NOTE: PROVIDE DRIVEWAY CURB CUTS (WEEP HOLES AS DIRECTED BY ENGINEER)
- NOTE: ALL PIPE CONCRETE MEETING STRENGTH REQUIREMENTS OF CLASS III
- NOTE: EXTG. BURIED UTILITY - SAN. SEWER

PLAN	DATE	BY
SURVEYED		
FLORIST CHECKED		
NOTE BOX		
NOTED		

PROFILE	DATE	BY
SURVEYED		
FLORIST CHECKED		
NOTE BOX		
NOTED		



NOTE: FINISH GRADE AND STORM SEWER ELEVATIONS HAVE BEEN RAISED 1 FOOT. THE PLOTTED GRADE LINES HAVE NOT BEEN RAISED.

AS BUILT 6-27-78 R.L.Z.
 DOUGLAS COUNTY ROAD DEPT.
 NEWTON OAKS STREETS # 314
 DATE AUG. 1970 SHEET 1
 GEORGE E. GRUBB, COUNTY ENG.