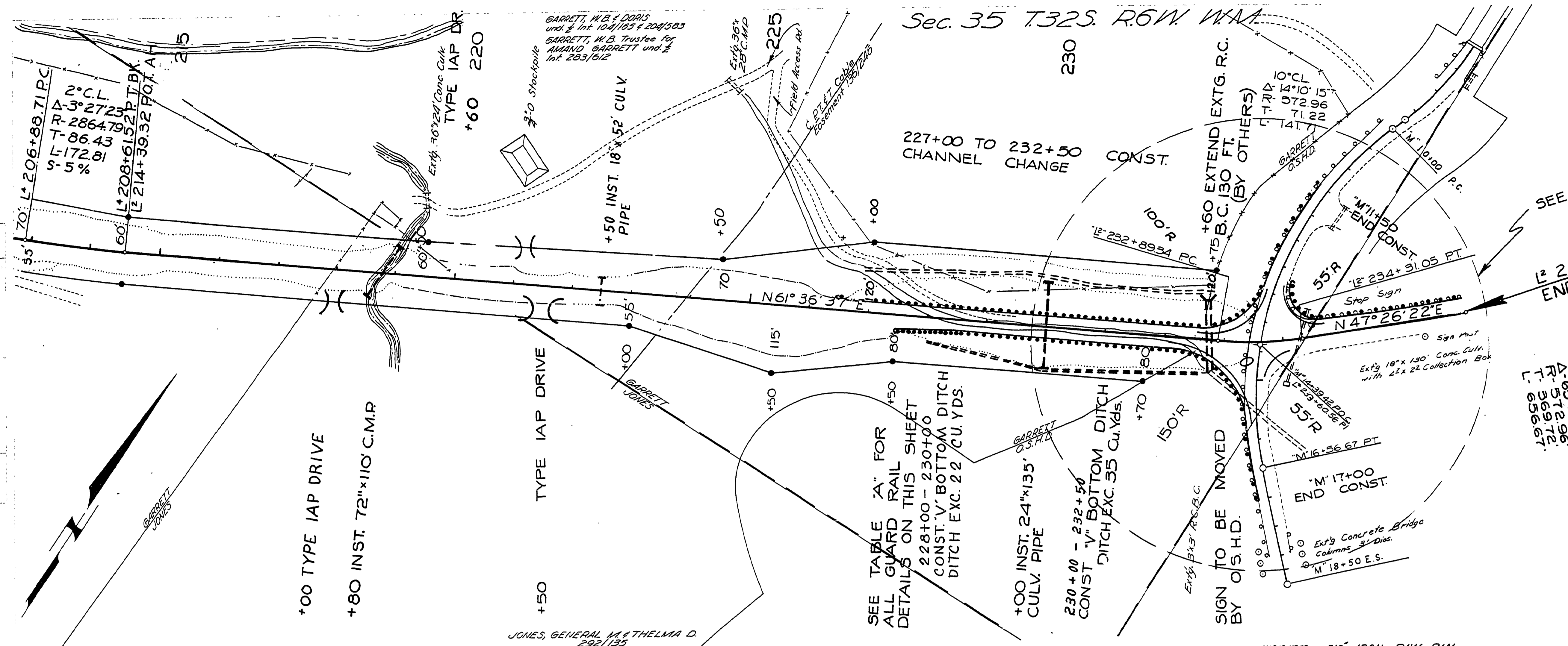


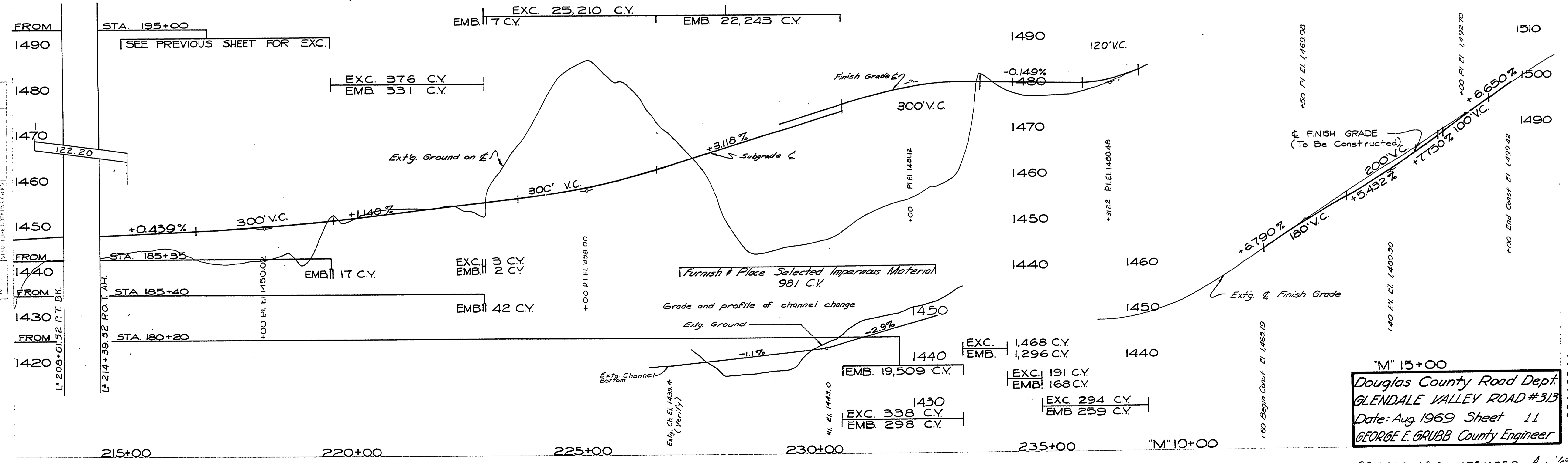
Sec. 35 T.32S. R.6W. WMA



12° C.L.  
 $\Delta - 20^\circ 53' 48''$   
 $R - 447.46$   
 $T - 88.05$   
 $L - 174.14$

SEE SHEET 5 FOR INTERSECTION DETAIL  
 INTERSTATE

SALVAGE GUARD RAIL		REINSTALL SALVAGED GUARD RAIL	
STA. to STA.	Lin Ft	STA. to STA.	Lin Ft
12' 234+00 - 237+00	325	12' 234+00 - 236+85	325
M' 11+50 - 13+50	200	M' 11+50 - 13+50	200
M' 13+50 - 15+50	200	12' 226+50 - 228+50	200
M' 15+50 - 17+00	150	M' 15+50 - 17+00	150
INSTALL NEW GUARD RAIL			
STA. to STA.	Lin Ft	Guard Rail	Flare
12' 227+30 - M' 15+50 R+ Side	650	61	8
12' 226+85 - M' 13+50 L+ Side	550	44	



M' 15+00  
 Douglas County Road Dept.  
 GLENDALE VALLEY ROAD #313  
 Date: Aug. 1969 Sheet 11  
 GEORGE E. GRUBB County Engineer

REVISED AS CONSTRUCTED Aug. '69  
 G.R. # 313 SHEET 11

M.P. 2.11-2.44

02110244