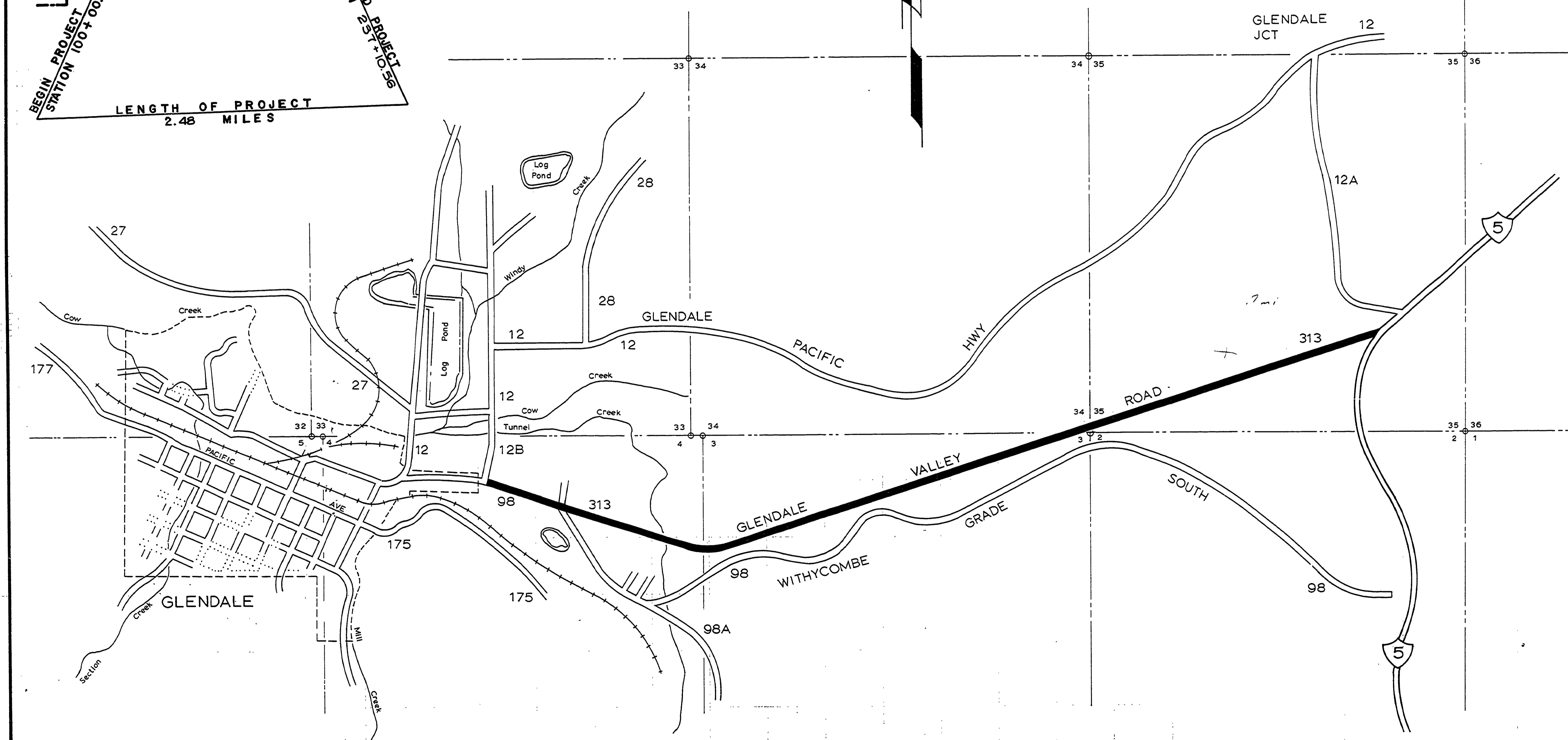
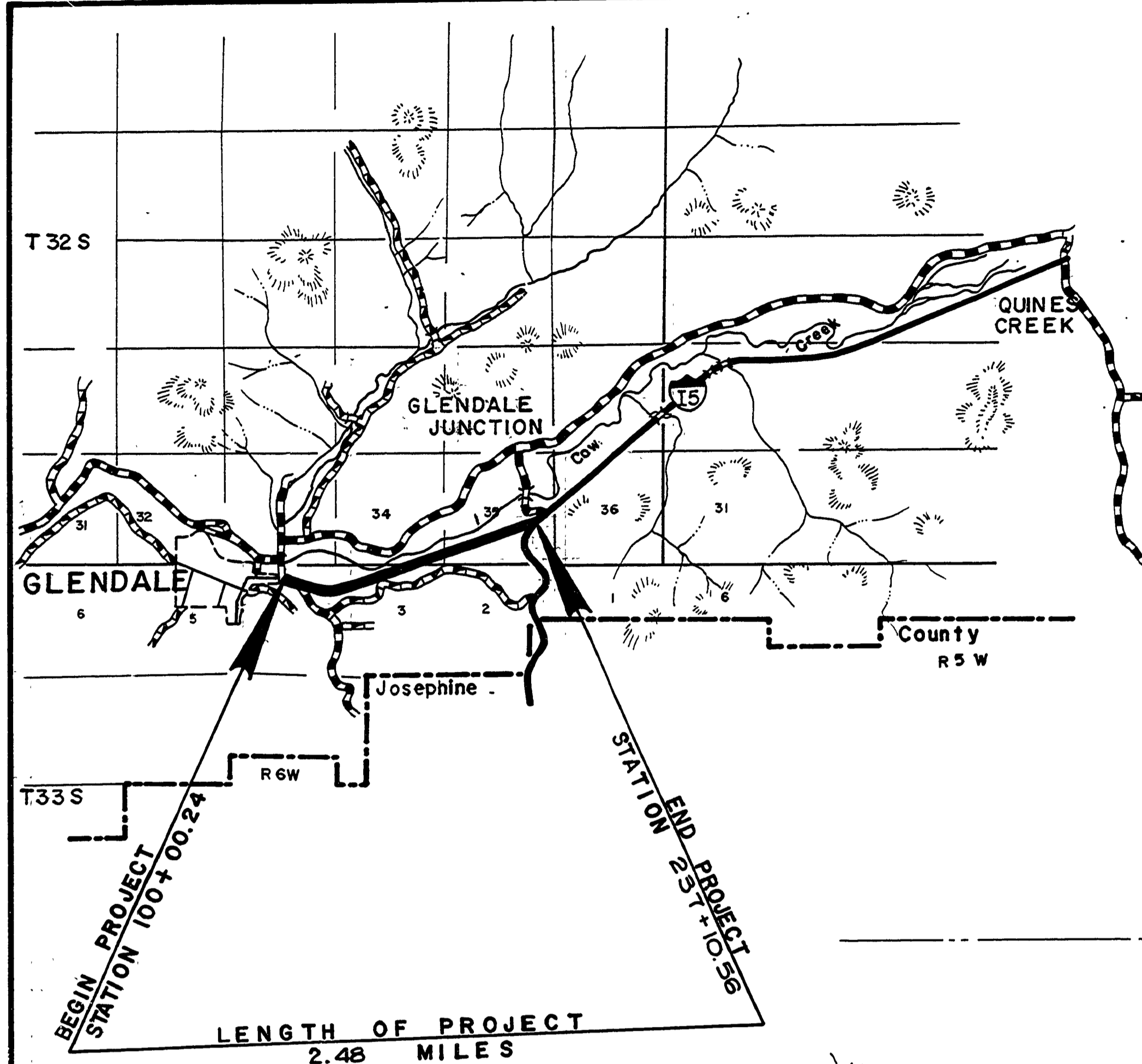


DOUGLAS COUNTY, OREGON
 PLANS FOR PROPOSED PROJECT
 GRADING & SURFACING

GLENDALE VALLEY ROAD COUNTY RD. 313

MILE POINT 0.00 TO MILE POINT 2.48

AUGUST 1969



- INDEX OF DRAWINGS
- SHEET #1 - TITLE SHEET
 - 2 - QUANTITY SUMM.
 - 3-4 - TYPICALS
 - 5 - INTSCTN. DETAIL
 - 6 - PIPE LIST
 - 7-12 - ROAD PLANS
 - 13 - STM. SEWER
- STD. DWGS.
 #2,3,4,5,6,9,13 & 14
- TOTAL..... 21 SHEETS



Douglas County Road Dept.
 GLENDALE VALLEY Rd. #313
 Date: August 1969 Sht. 1
 George E. Grubb County Engineer

10000024C