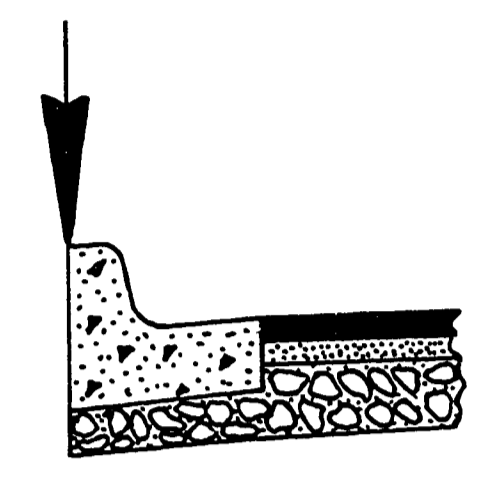
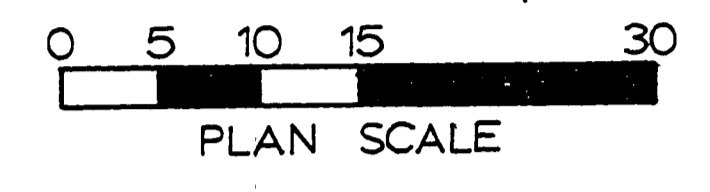


FILED  
RECEIVED  
JUL 15 1975  
COUNTY SURVEYOR  
DOUGLAS COUNTY, NEB.

W	R1	Δ1	L1	R2	Δ2	L2	S2	L2'	X	AREA
33	29.5	103°06'15"	53.08	41.5	226°40'51"	21.73	16°40'51"	12.08		7439

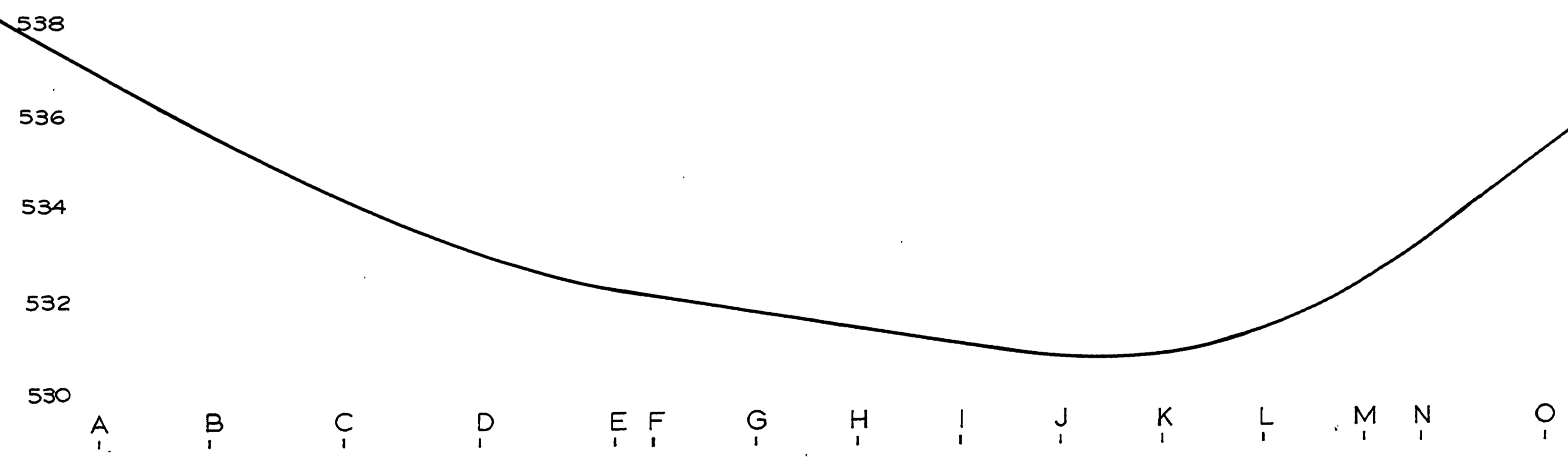
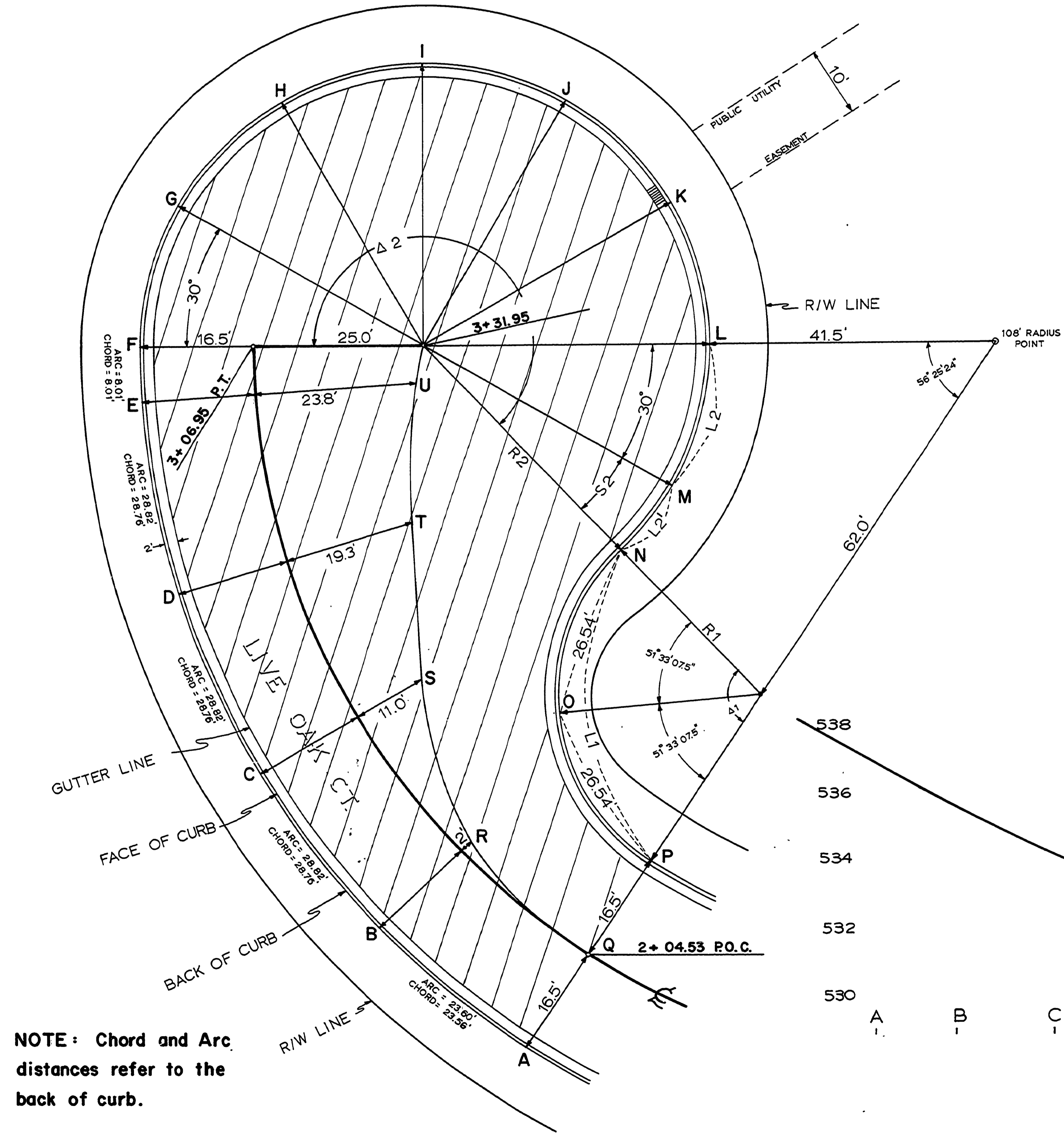
NOTE: Q thru U refer to top of A.C.

A	B	C	D	E	F	G	H	I	J	K	L	M	N	O	P	Q	R	S	T	U
536.83	535.63	534.18	532.96	532.18	532.04	531.68	531.35	531.01	530.68	530.70	531.25	532.27	533.06	535.05	537.05	536.57	535.37	534.02	532.80	532.02



TYPE "B" CURB & GUTTER

ELEVATIONS LISTED CORRESPOND TO LOCATIONS SHOWN



NOTE: Chord and Arc distances refer to the back of curb.

NOT REVISED  
AS CONSTRUCTED

DOUGLAS COUNTY ROAD DEPT.  
OAK KNOLLS ST'S. RD. 311  
1973 SHT. 7  
GEORGE E. GRUBB, COUNTY ENGR.