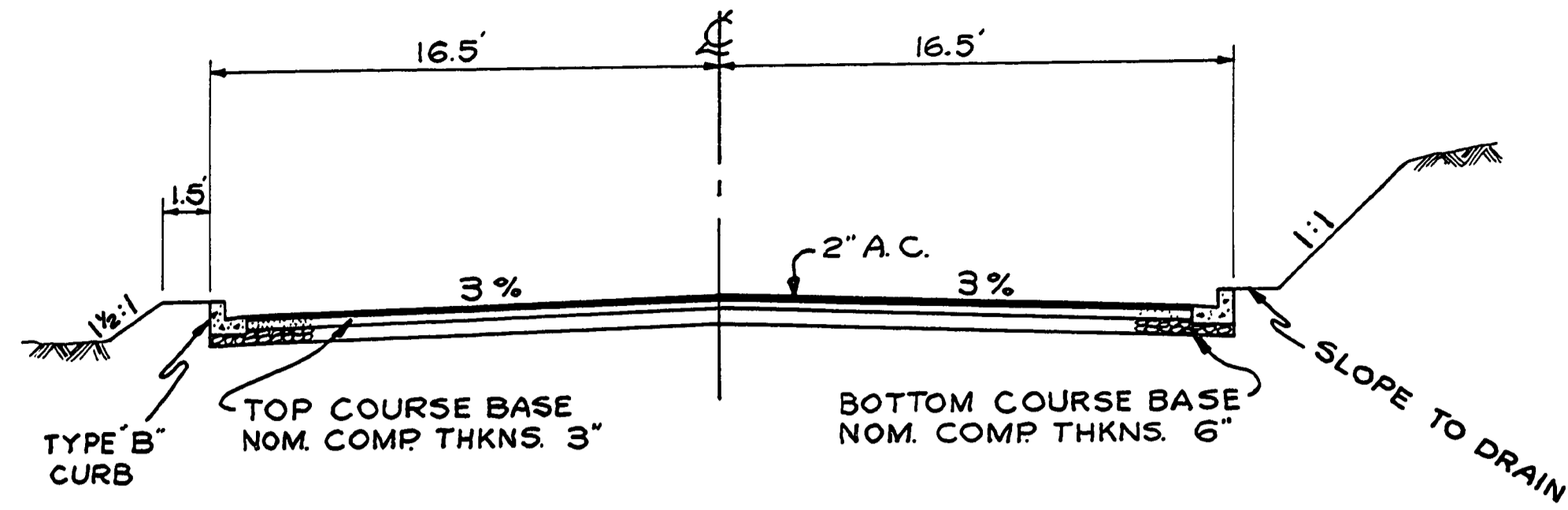
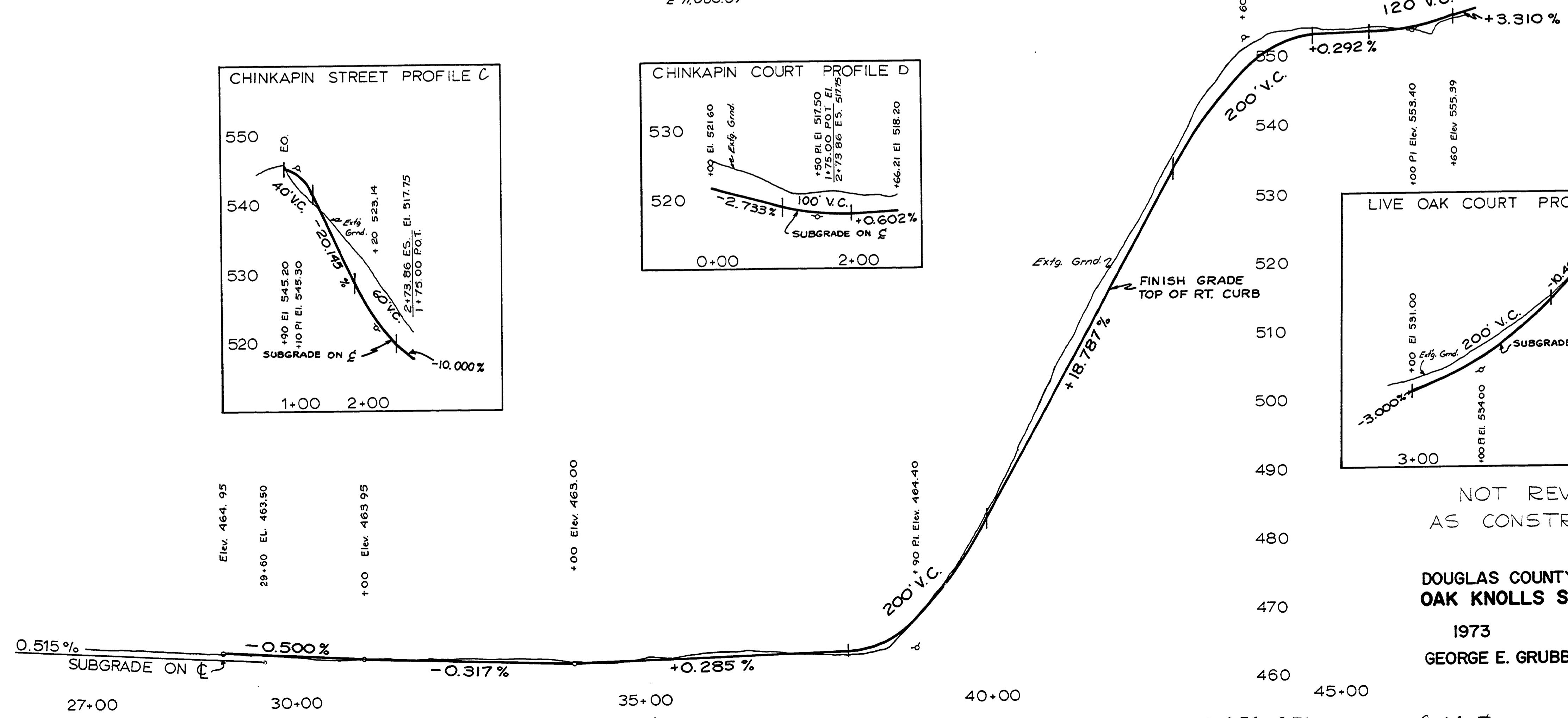
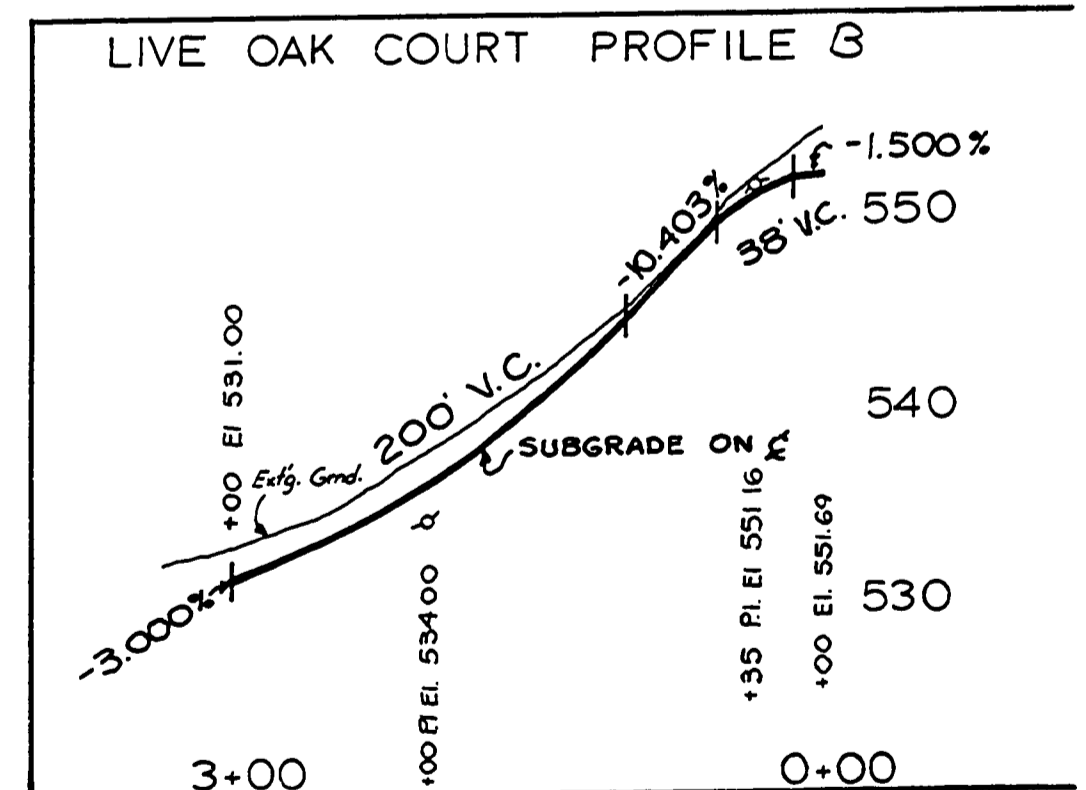
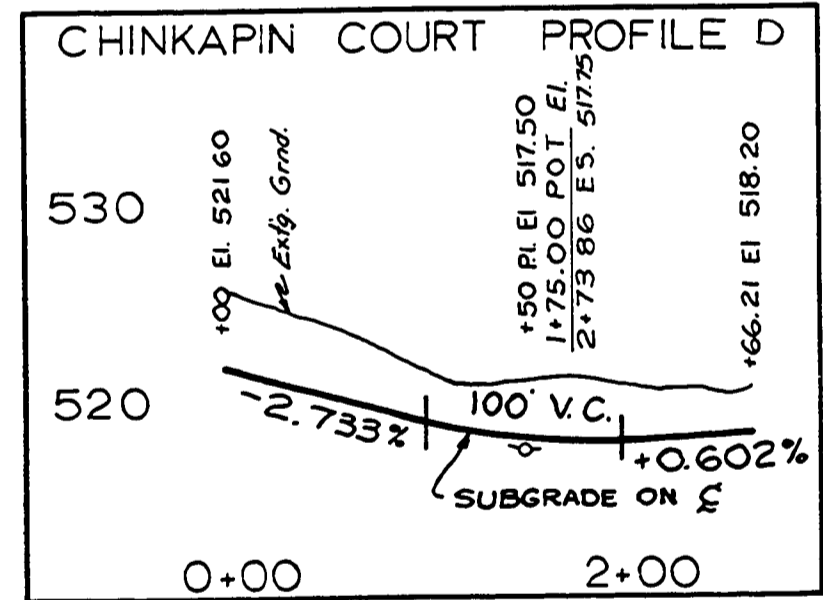
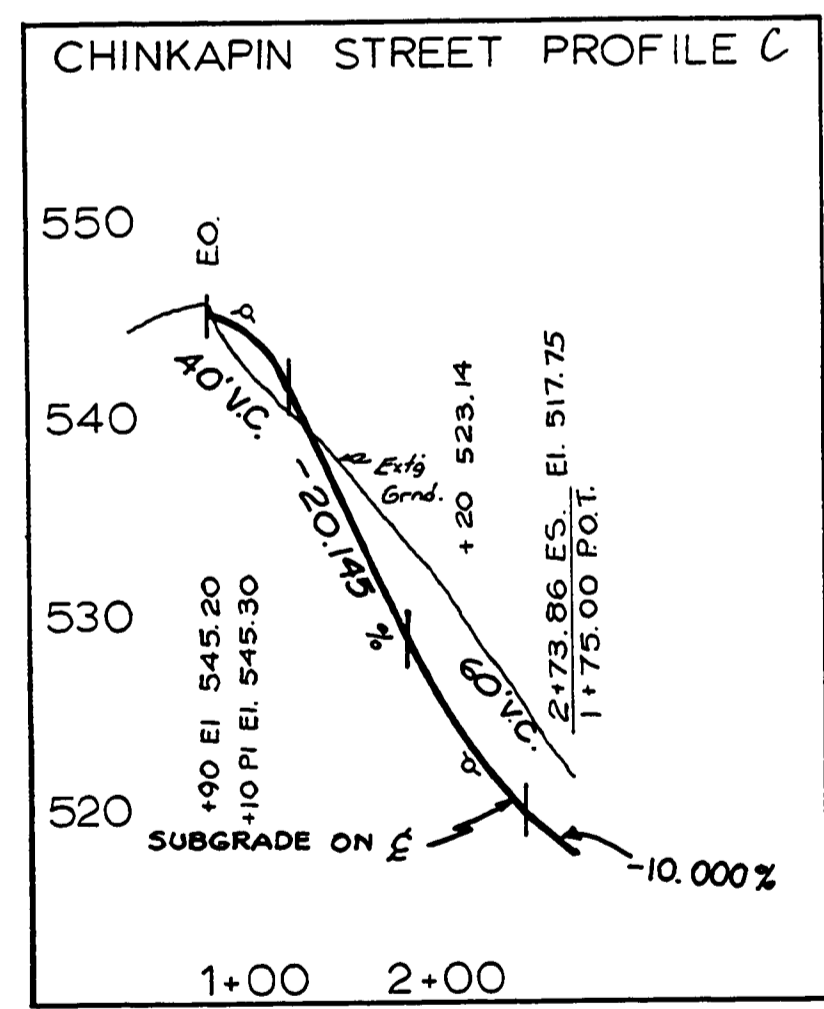
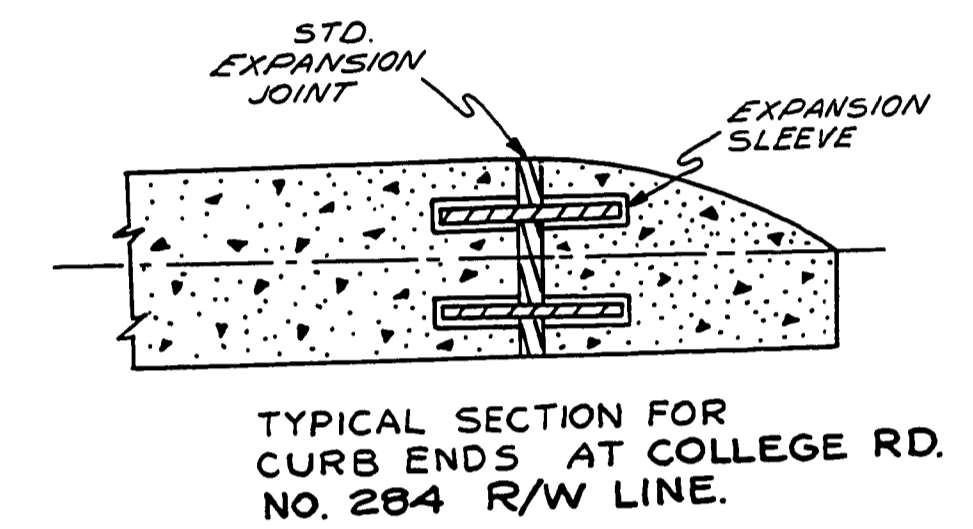
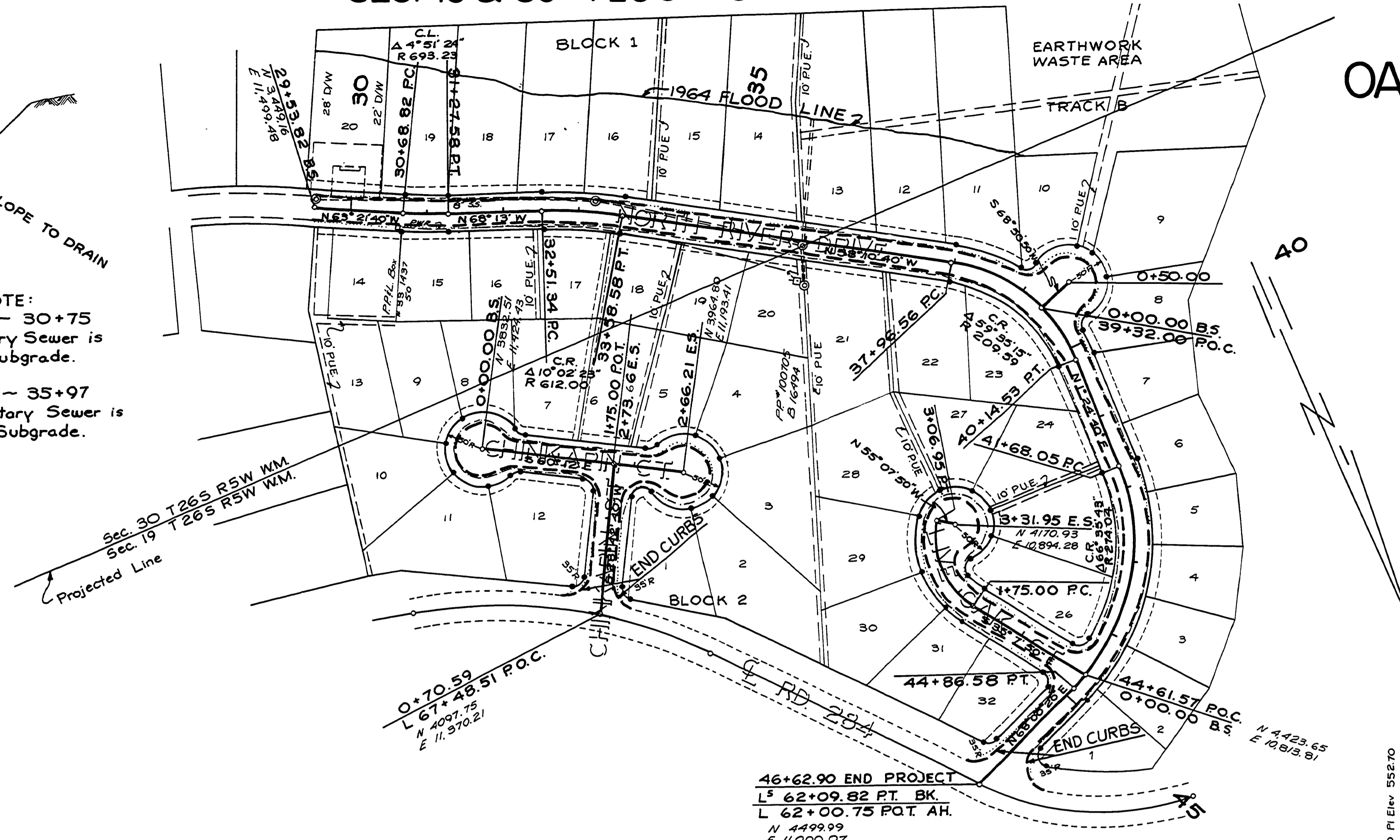
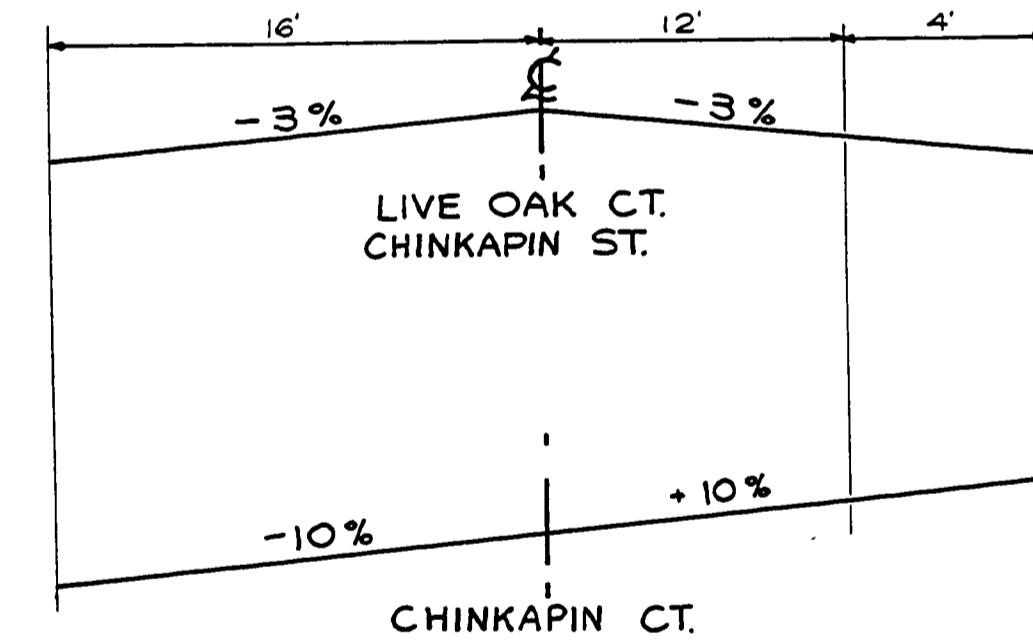
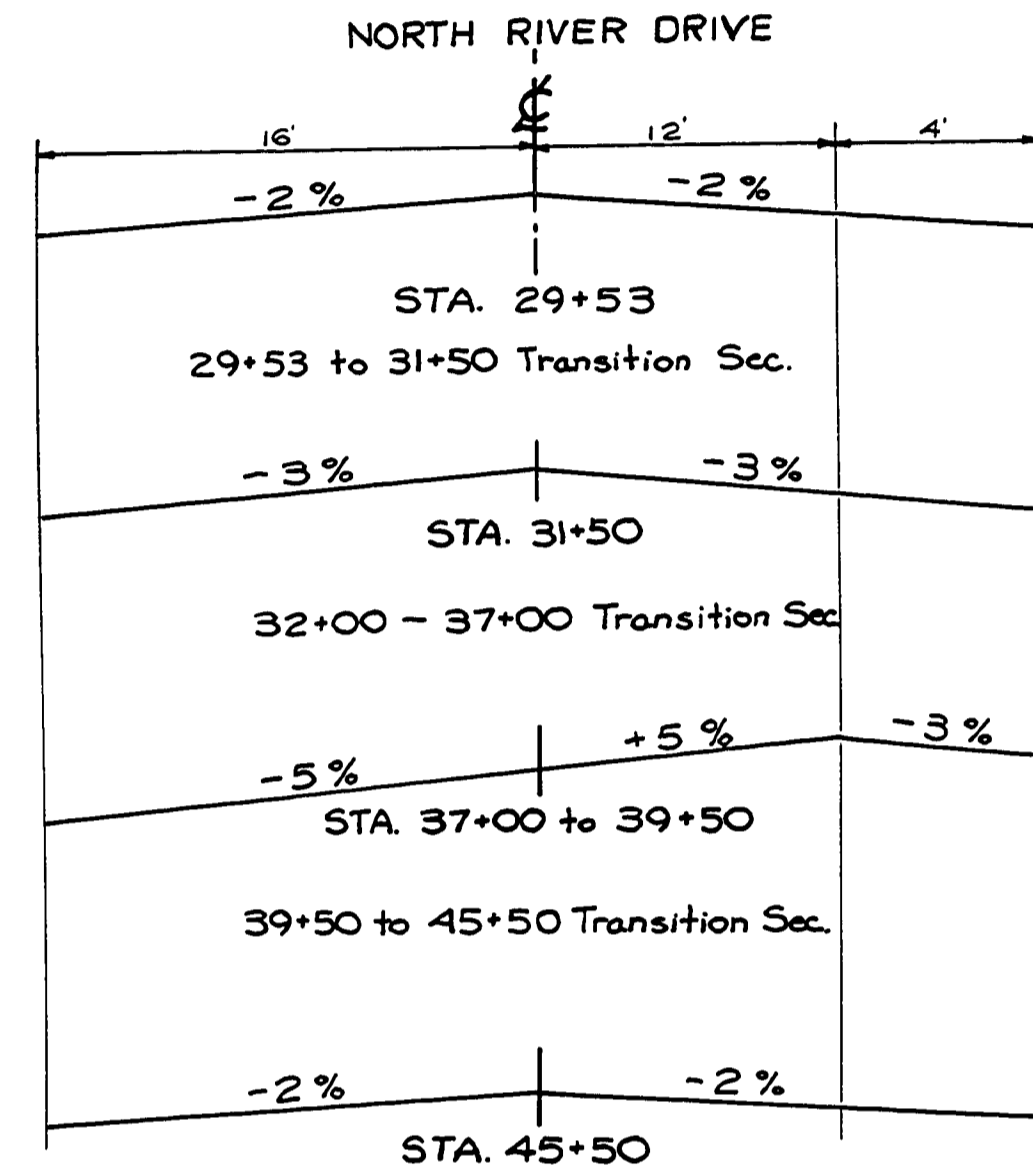


OAK KNOLLS ESTATES FIRST ADDITION

FILED
RECEIVED
COUNTY SURVEYOR
DOUGLAS COUNTY, MO.



NOTE:
Sta. 29+75 - 30+75
Top of Sanitary Sewer is
1.1' Below Subgrade.
Sta. 32+00 - 35+97
Top of Sanitary Sewer is
1.5' Below Subgrade.



NOT REVISED
AS CONSTRUCTED

DOUGLAS COUNTY ROAD DEPT.
OAK KNOLLS STS. RD. NO. 311
1973 SHT. 4
GEORGE E. GRUBB, COUNTY ENGR.

00390071