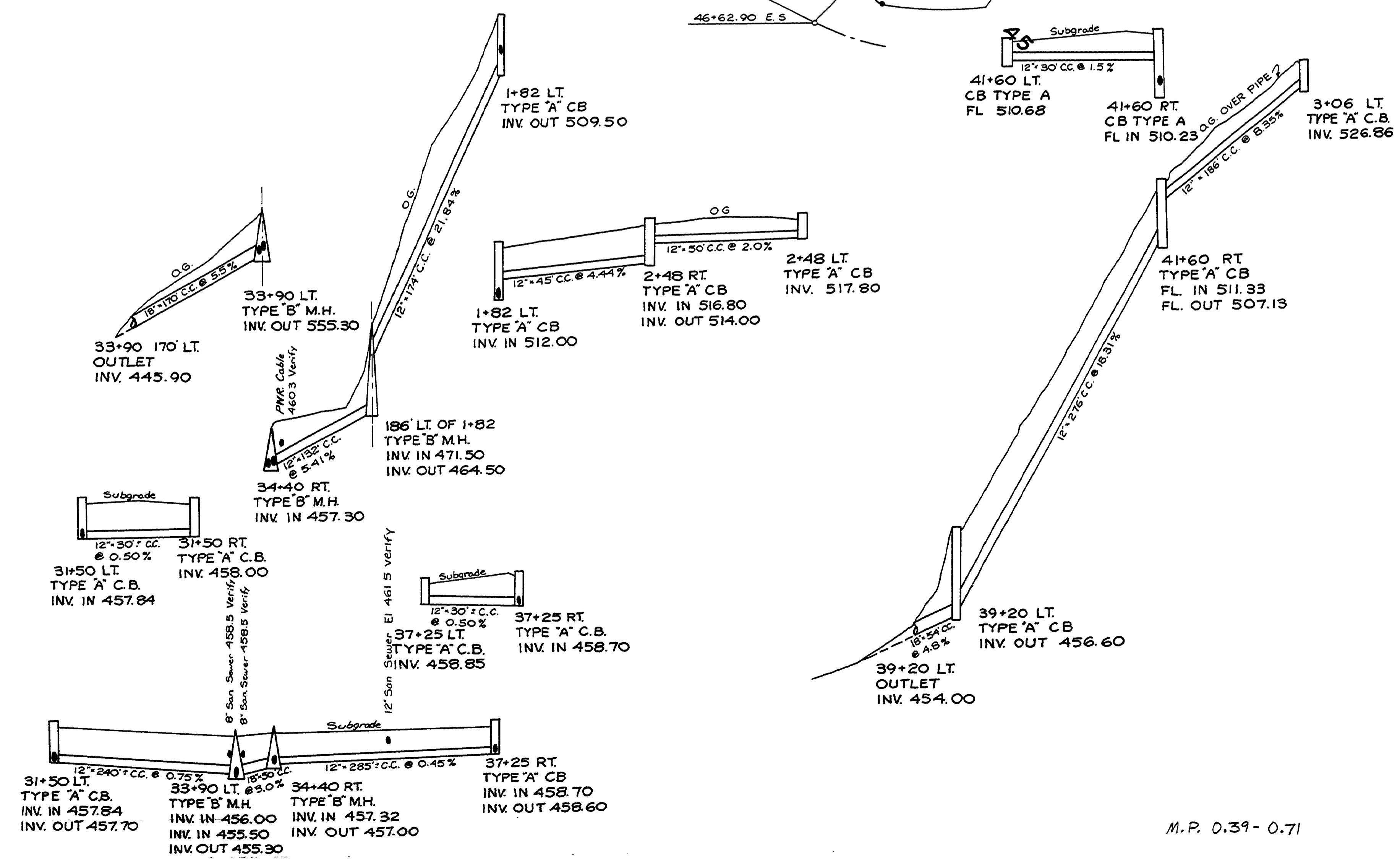
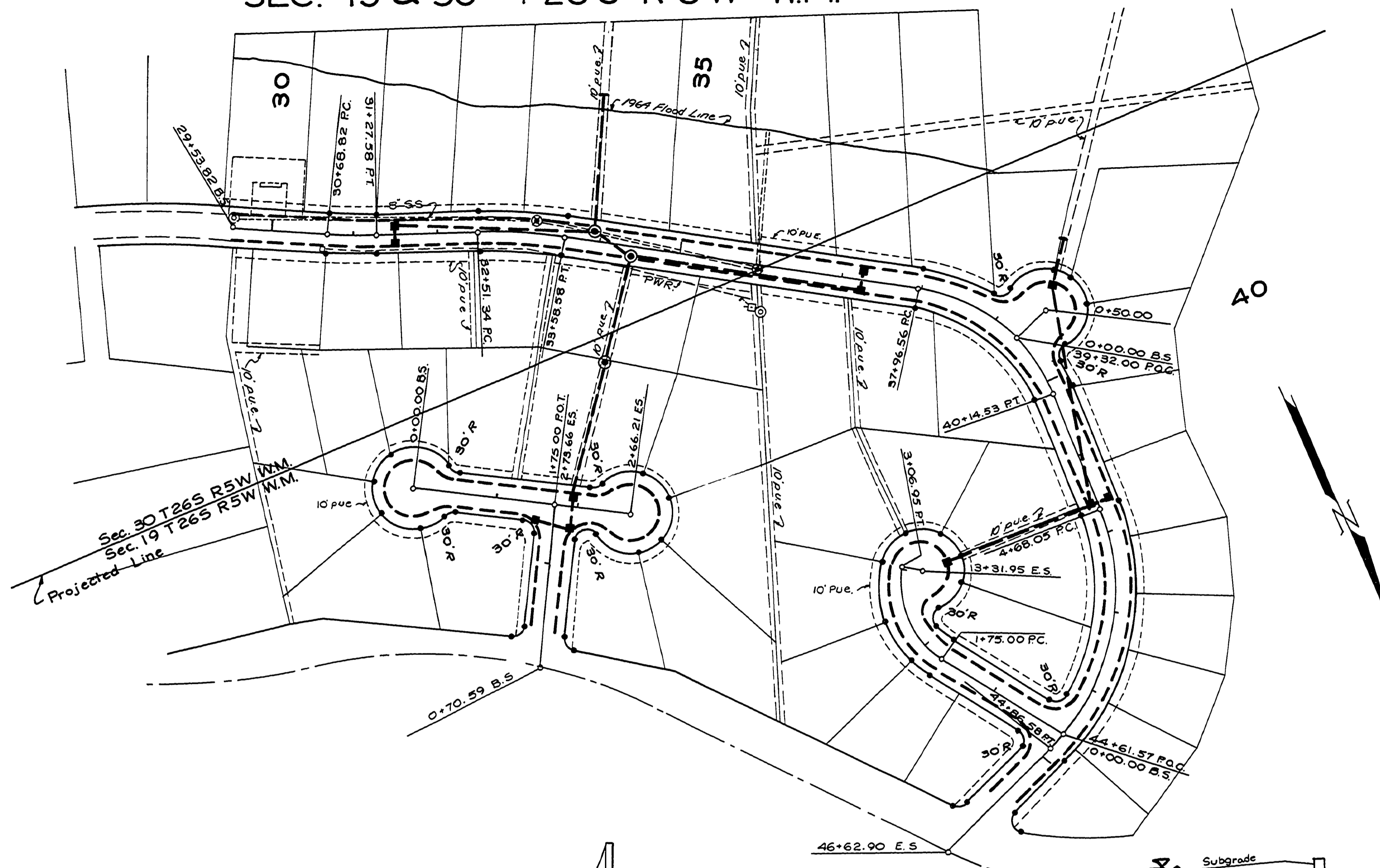


SEC. 19 & 30 T 26 S R 5 W W.M.

RD. 311

FILED
RECEIVED
COUNTY ENGINEER
DOUGLAS COUNTY, KANS.



NOT REVISED
AS CONSTRUCTED
DOUGLAS COUNTY ROAD DEPT.
OAK KNOLLS ST'S. RD. 311
1973 SH. 5
GEORGE E. GRUBB, COUNTY ENGR.

M.P. 0.39-0.71

GRD # 311
Sht 5
1973

00390070