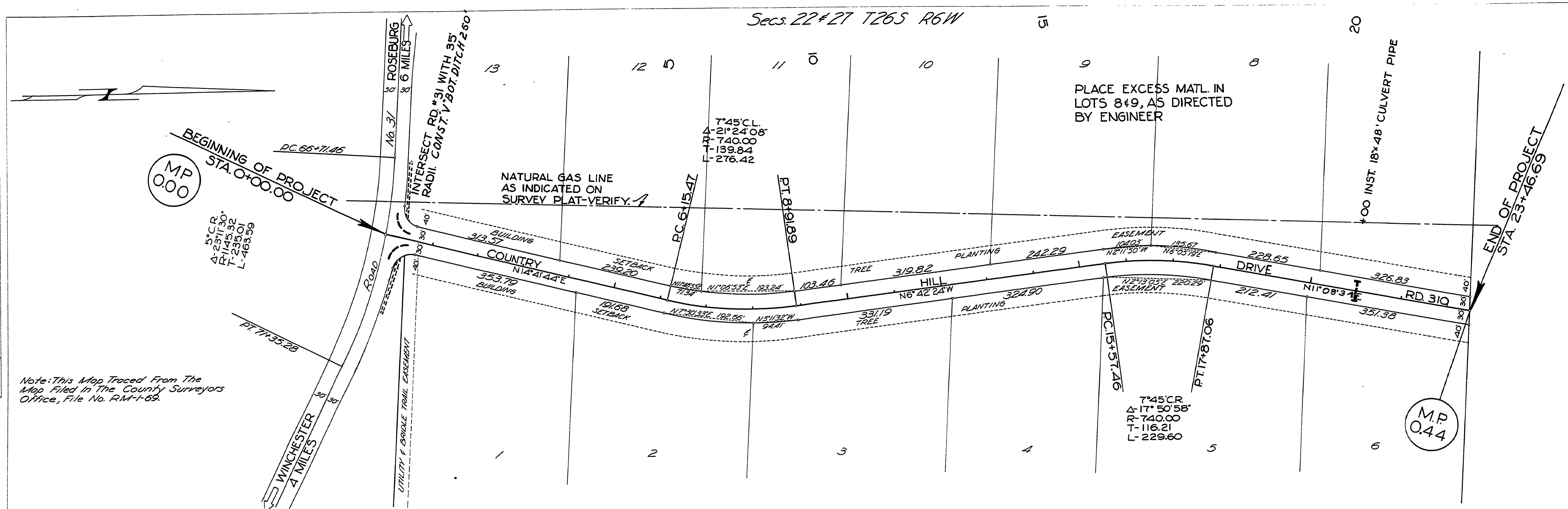
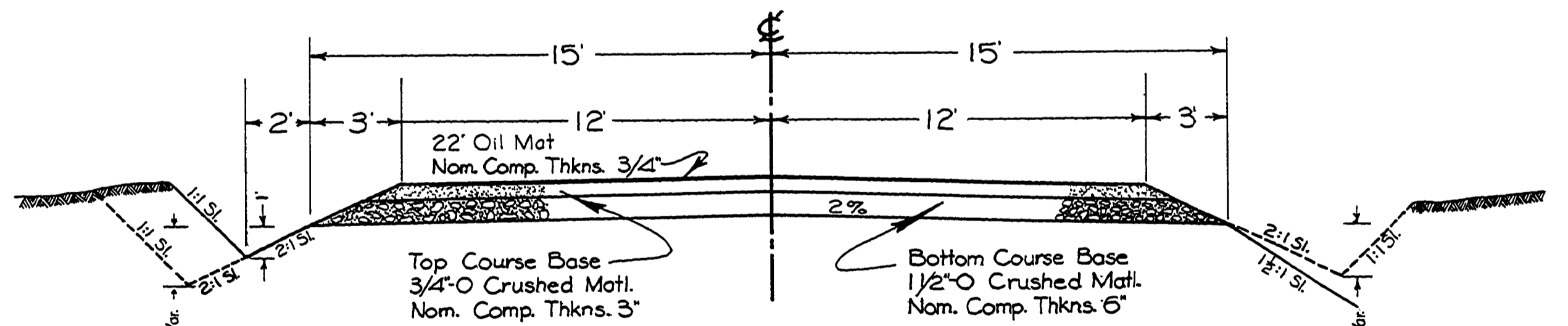


DATE	
BY	
SURVEYED	
PLOTTED	
CHECKED	
NOTE BOOK NO.	

DATE	
BY	
SURVEYED	
PLOTTED	
CHECKED	
NOTE BOOK NO.	



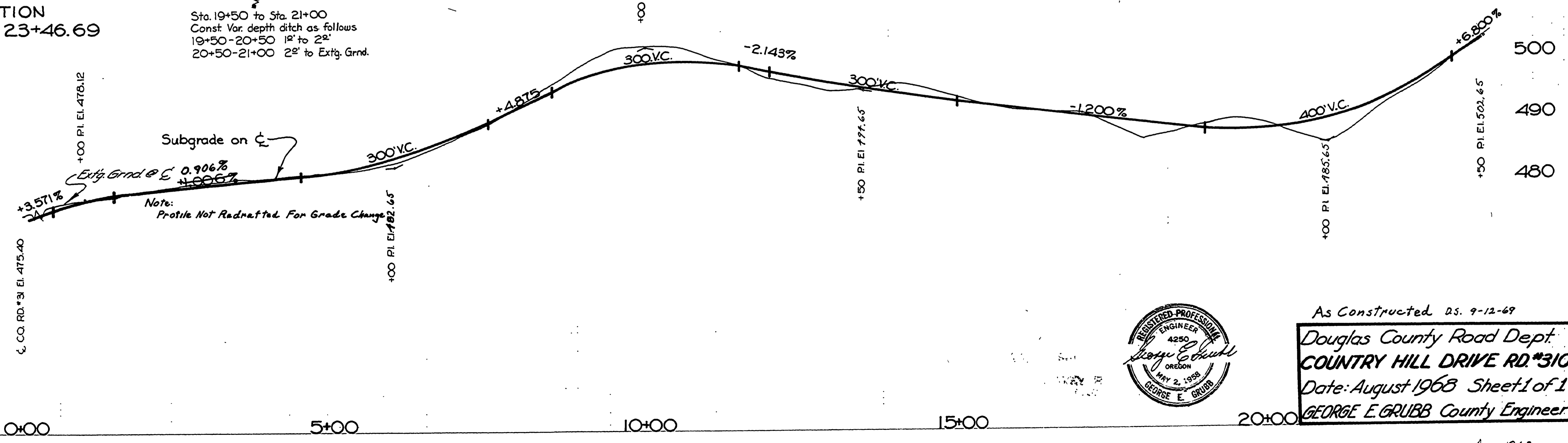
Note: This Map Traced From The Map Filed In The County Surveyors Office, File No. RM-1-69.



TYPICAL SECTION STA. 0+15 TO STA. 23+46.69

*Sta. 19+00 to Sta. 21+00
Const. Var. depth ditch as follows
19+00-20+00 12" to 22"
20+00-21+00 22" to Extg. Grnd.

Sta. 19+50 to Sta. 21+00
Const. Var. depth ditch as follows
19+50-20+50 12" to 22"
20+50-21+00 22" to Extg. Grnd.



As Constructed as. 9-12-69
Douglas County Road Dept.
COUNTRY HILL DRIVE RD.#310
 Date: August 1968 Sheet 1 of 1
GEORGE E. GRUBB County Engineer.

00000044