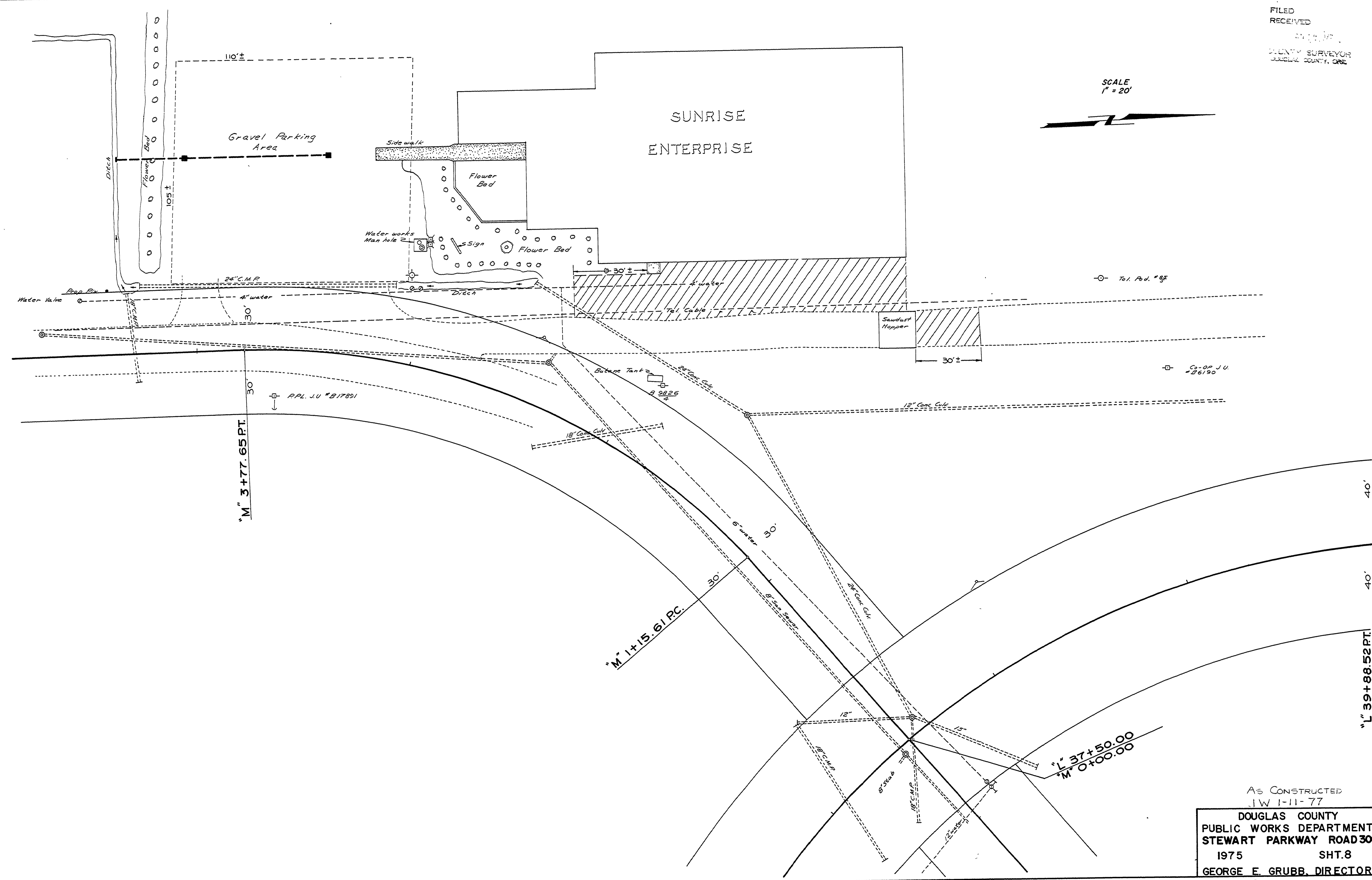


FILED
RECEIVED
COUNTY SURVEYOR
JULIA COUNTY, ORE

SCALE
1" = 20'



SUNRISE
ENTERPRISE



AS CONSTRUCTED
JW 1-11-77
DOUGLAS COUNTY
PUBLIC WORKS DEPARTMENT
STEWART PARKWAY ROAD 308
1975 SHT. 8
GEORGE E. GRUBB, DIRECTOR

00550062

M.P. 0.55-0.62

G.R. # 308 Sht. 8

15