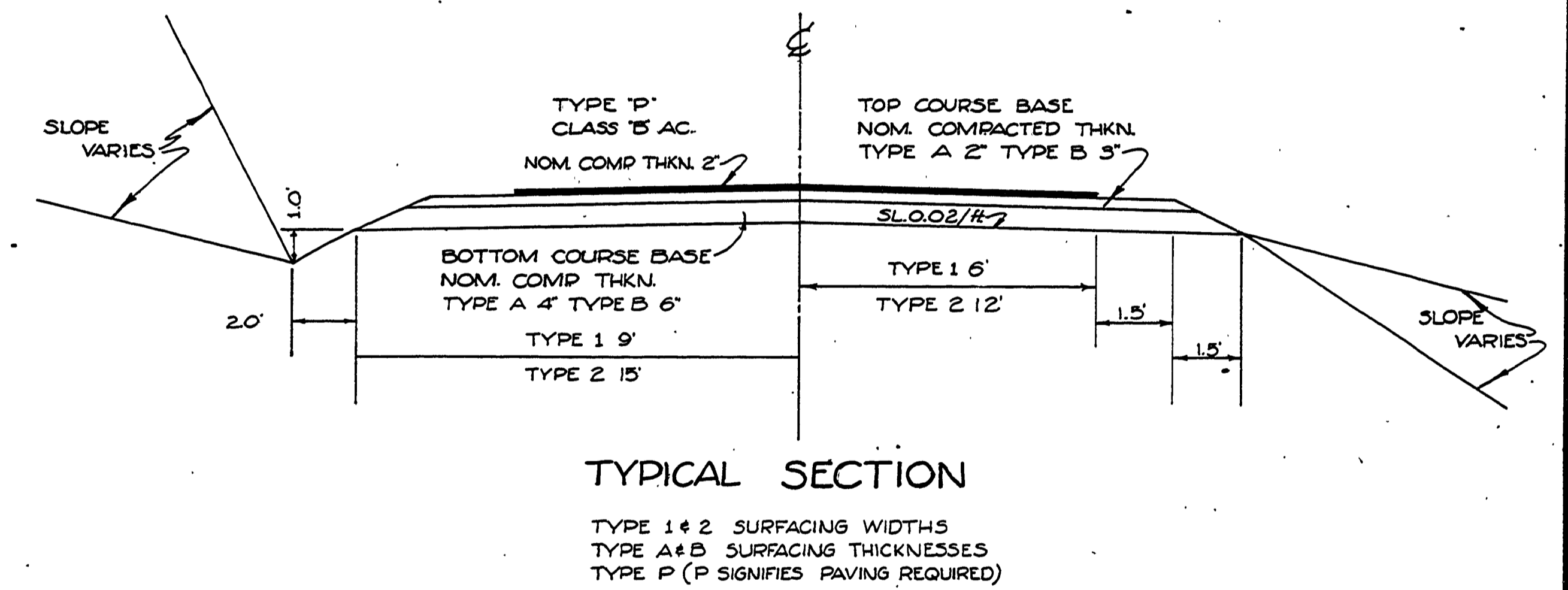
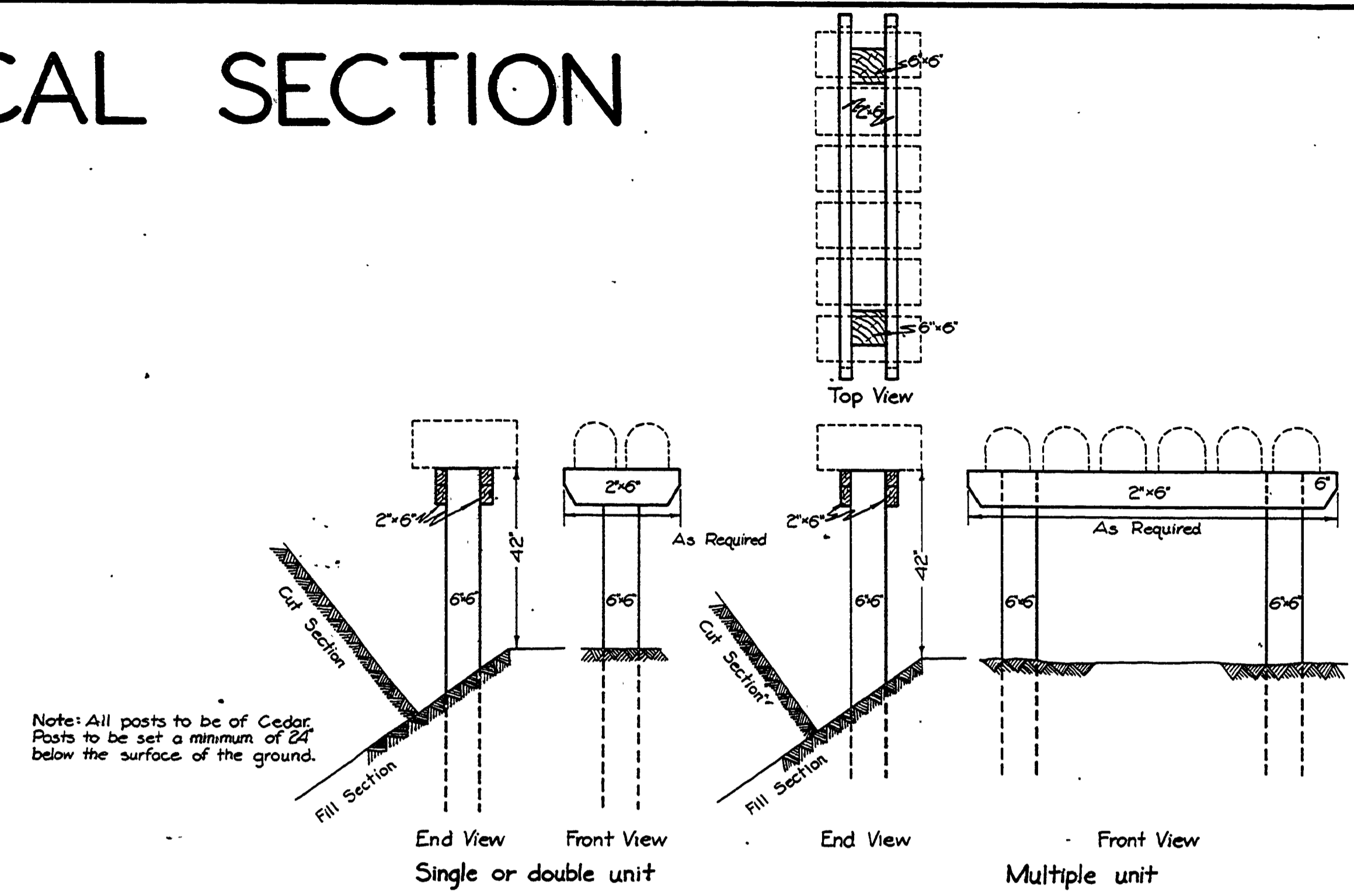
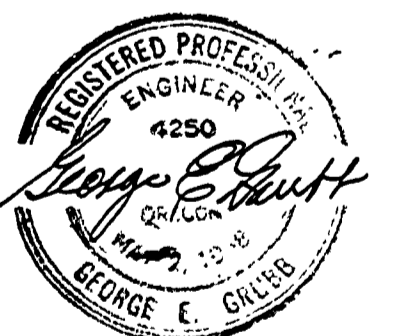


PIPE LIST & DRIVEWAY TYPICAL SECTION

STATION	DIAMETER	LENGTH	MATERIALS						REMARKS STRUTTED, END TREATMENT IMPERFECT TRENCH, ETC.	
			ALUMINUM			GALV. STEEL				CONCRETE
			ANNULAR CORR. GAGE	HELICAL CORR.	ASPHALT COATED	ANNULAR CORR. GAGE	HELICAL CORR.	ASPHALT COATED		
0+28	18"	54'				16	16			
1+50	18"	56'				16	16			
1+90	12"	30'				16	16			
7+00	18"	80'				16	16			
9+50	18"	54'				16	16			
14+50	18"	87'				16	16			
19+35	18"	120'				16	16			
22+20	18"	175'				16	16			
24+30	18"	82'				16	16			
29+50	18"	44'				16	16			
35+00	18"	84'				16	16			
37+50	18"	48'				16	16			
42+00	18"	110'				16	16			
47+00	18"	56'				16	16			
51+00	18"	56'				16	16			
57+50	18"	66'				16	16			
61+65	18"	82'				16	16			
64+30	18"	128'				16	16			
66+50	18"	80'				16	16			
68+57	18"	114'				16	16			
71+68	18"	166'				16	16			
75+34	18"	112'				16	16			
82+10	24"	114'				14	14			
86+50	18"	76'				16	16			
88+27	18"	86'				16	16			
91+25	30"	100'				14	14			
95+50	18"	110'				16	16			
96+45	18"	48'				16	16			
102+31	18"	124'				16	16			
105+50	18"	82'				16	16			
109+00	18"	96'				16	16			
112+50	24"	138'				14	14			
ROAD TO DAM SITE										
5+50	18"	76'				16	16			
8+98	18"	60'				16	16			
13+50	18"	60'				16	16			



RURAL DRIVEWAY & ROAD APPROACH STANDARD



Job Name COOPER CREEK
 Job Number 305
 Date MAY 1969
 Douglas County Road Dept
 Standard Pipe List &
 Rural Driveway
 Date: May 1969
 GEORGE E. GRUBB County Engineer

G.R.G. #305
 May, 1969
 2A of 6

00000000