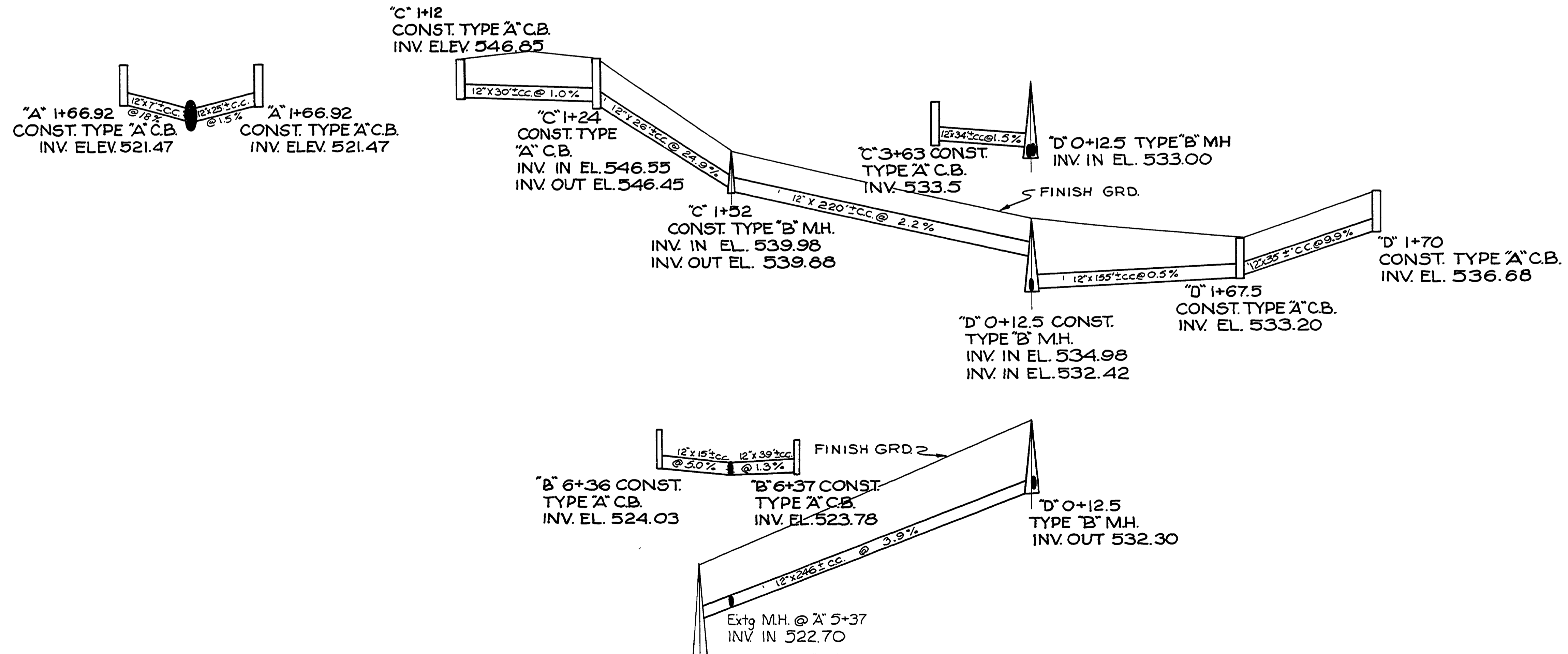
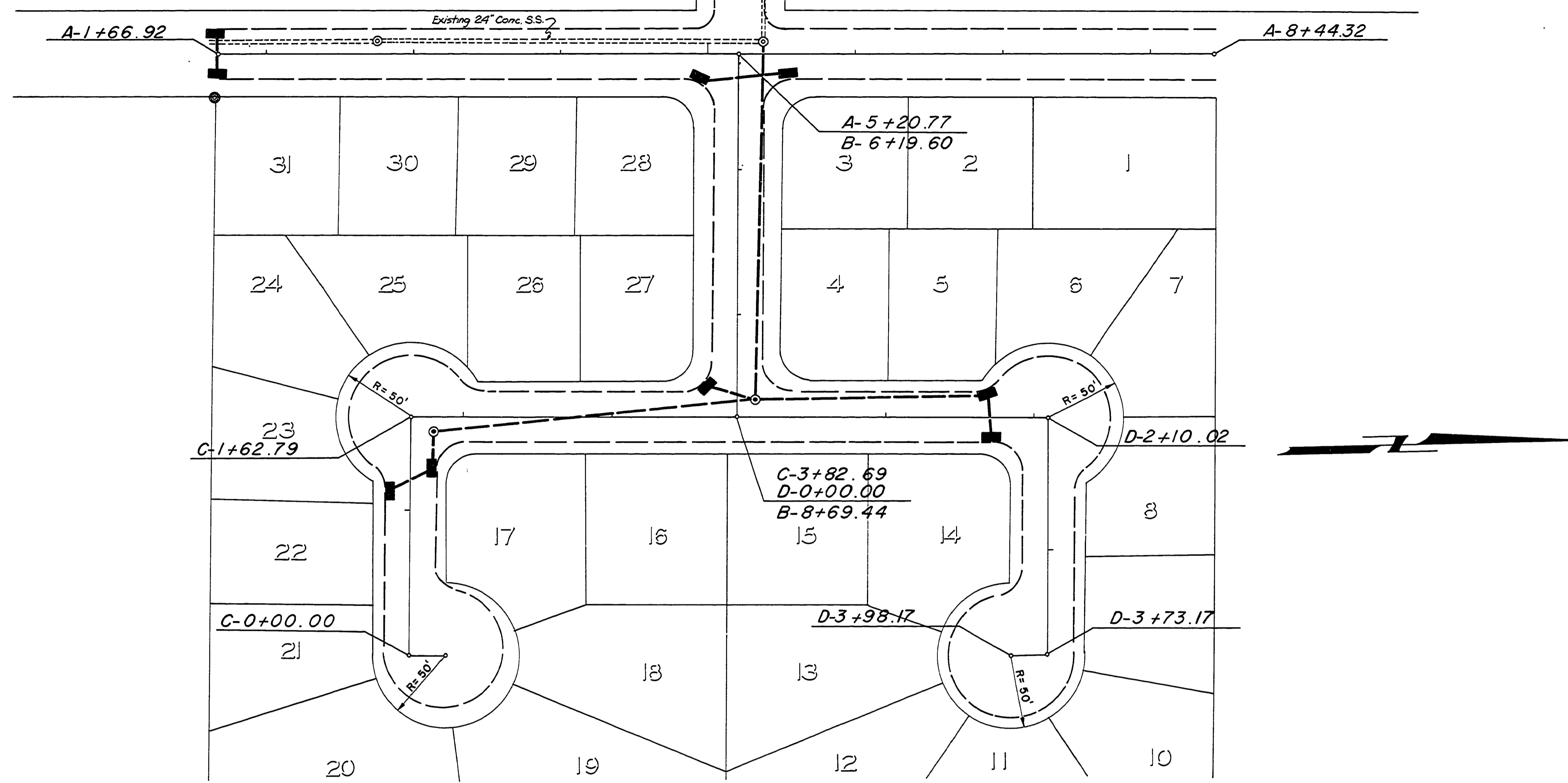


SEC.12 T27S R6W W.M.

FILED  
 JUN 21 1974  
 COUNTY SURVEYOR  
 DOUGLAS COUNTY, ORE.



00160020

AS BUILT 6-27-78 R.U.F.  
 DOUGLAS COUNTY ROAD DEPT.  
 HEWITT HEIGHTS RD #297  
 1974 SHT. 4  
 GEORGE E. GRUBB COUNTY ENGR.

Co. Rd. # 297  
 1974  
 Sht. 4 (38)