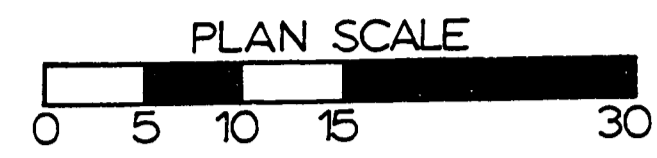
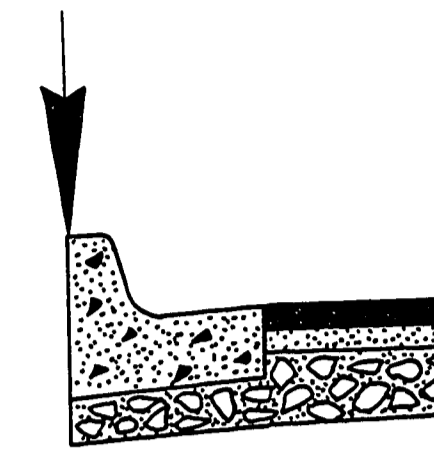


S2	Δ2	AREA
18° 27' 47"	258° 27' 47"	6,255 sq.ft.

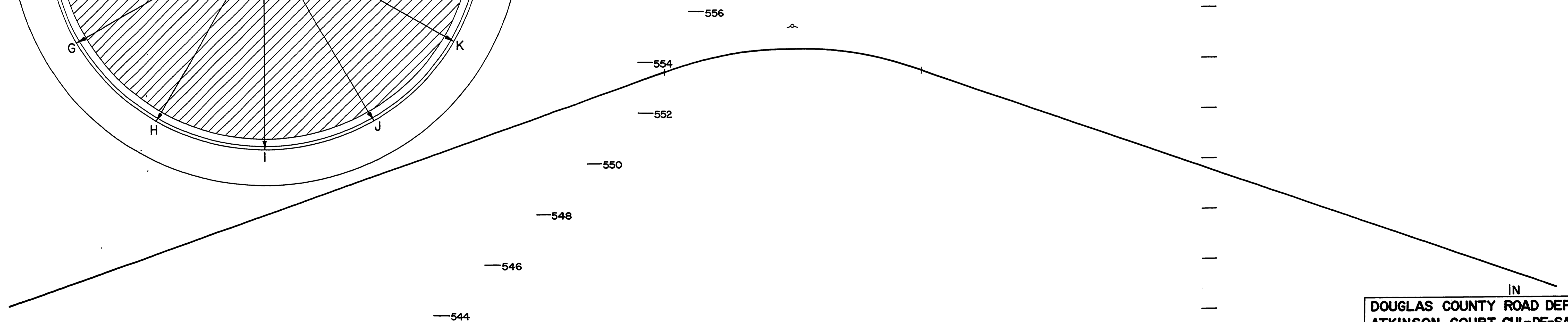
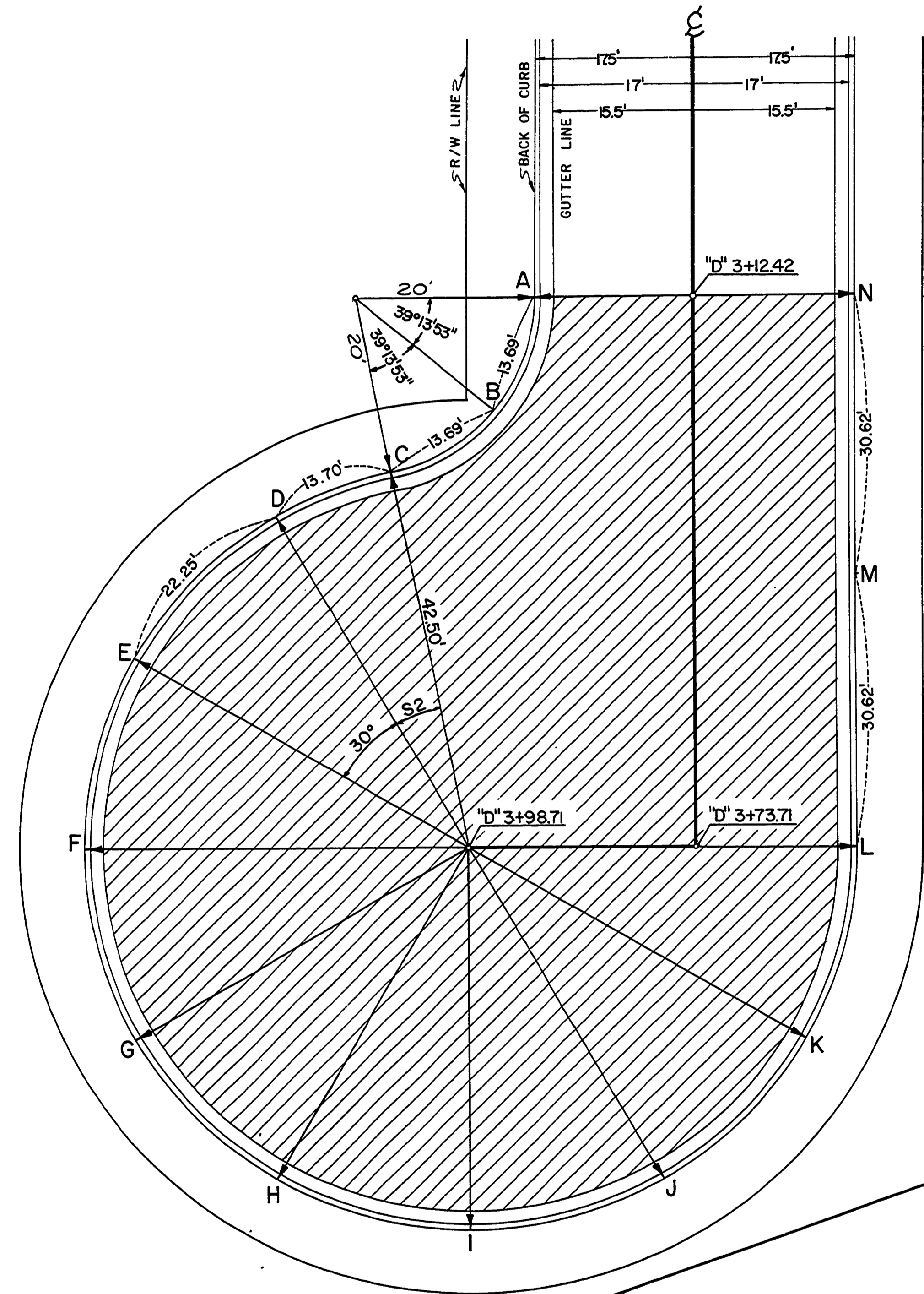


A	B	C	D	E	F	G	H	I	J	K	L	M	N
545.40	546.39	547.39	548.31	549.90	551.49	553.08	554.38	554.35	553.01	551.41	549.81	547.59	545.37

FILED
RECEIVED
JUN 27 1974
COUNTY SURVEYOR
DOUGLAS COUNTY, ORE.



TYPE "B" CURB & GUTTER



A B C D E F G H I J K L M

DOUGLAS COUNTY ROAD DEPT.
ATKINSON COURT CUL-DE-SAC
1974 R0297 SHT. 8
GEORGE E. GRUBB COUNTY ENG.

0000011