

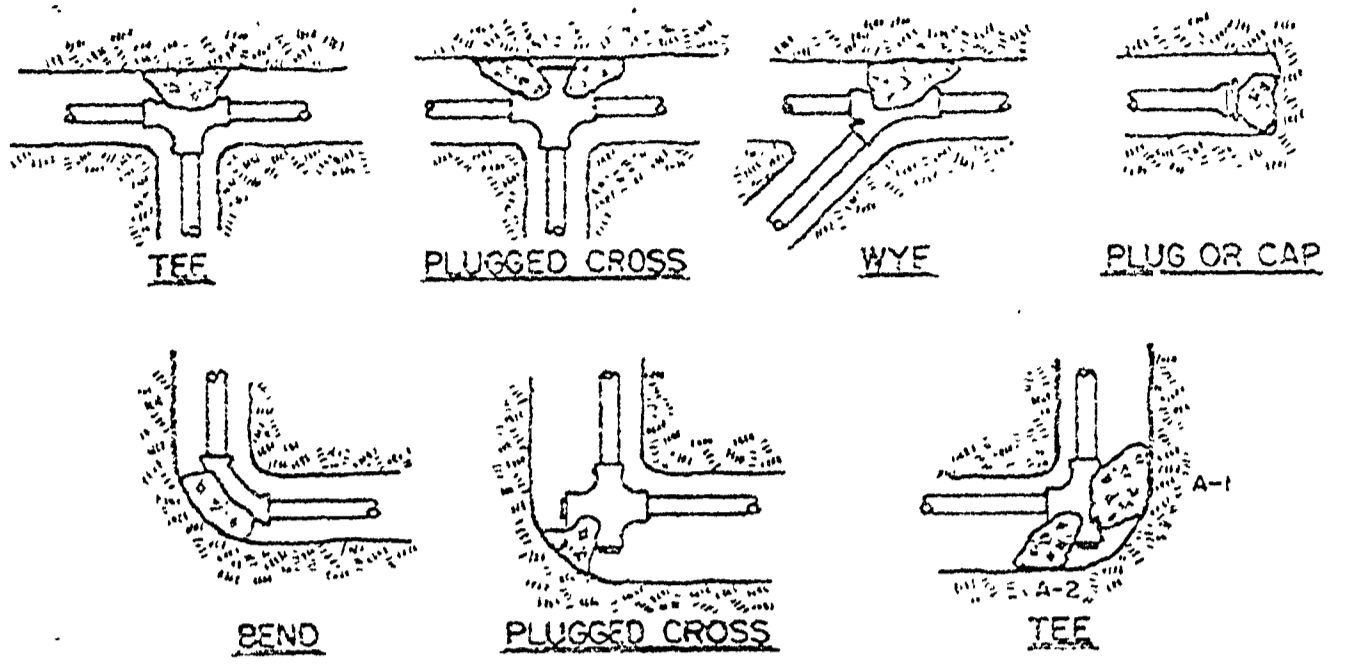
C & K BUILDERS, MYRTLE CREEK, OREGON

C & K ESTATES, TRI-CITY, OREGON

STREET, WATER & SANITARY SEWER IMPROVEMENTS

4

FILED
AUG 10 1987
COUNTY SURVEYOR
DOUGLAS COUNTY, ORE.

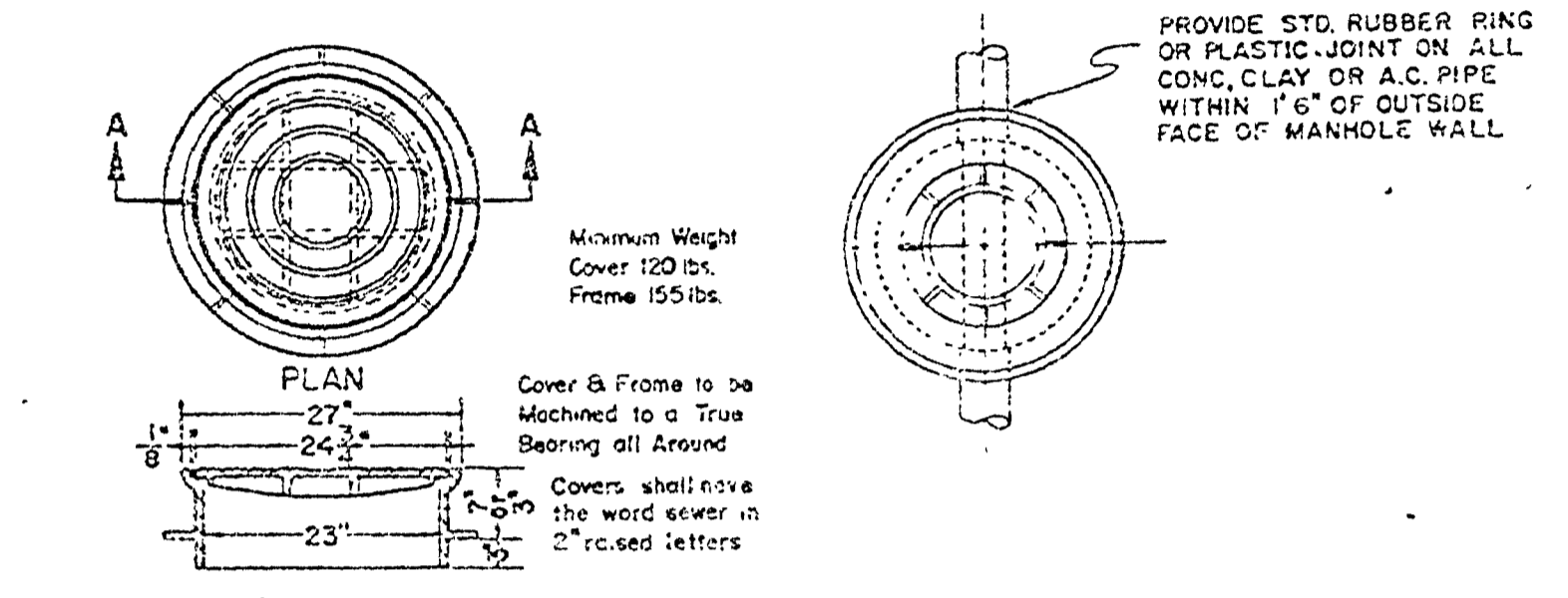


- NOTES:
1. Concrete thrust blocking to be poured against undisturbed earth.
 2. Keep concrete clear of joint and accessories.
 3. The required thrust bearing areas for special connections are shown encircled on the plans: e.g. (13) indicates 15 square feet bearing area required.
 4. If not shown on plans required bearing areas at fitting shall be as indicated below, adjusted if necessary, to conform to the test pressure(s) and allowable soil bearing stress(es) stated in the special specifications.
 5. Bearing areas and special blocking details shown on plans take precedence over bearing areas and blocking details shown on this standard detail.

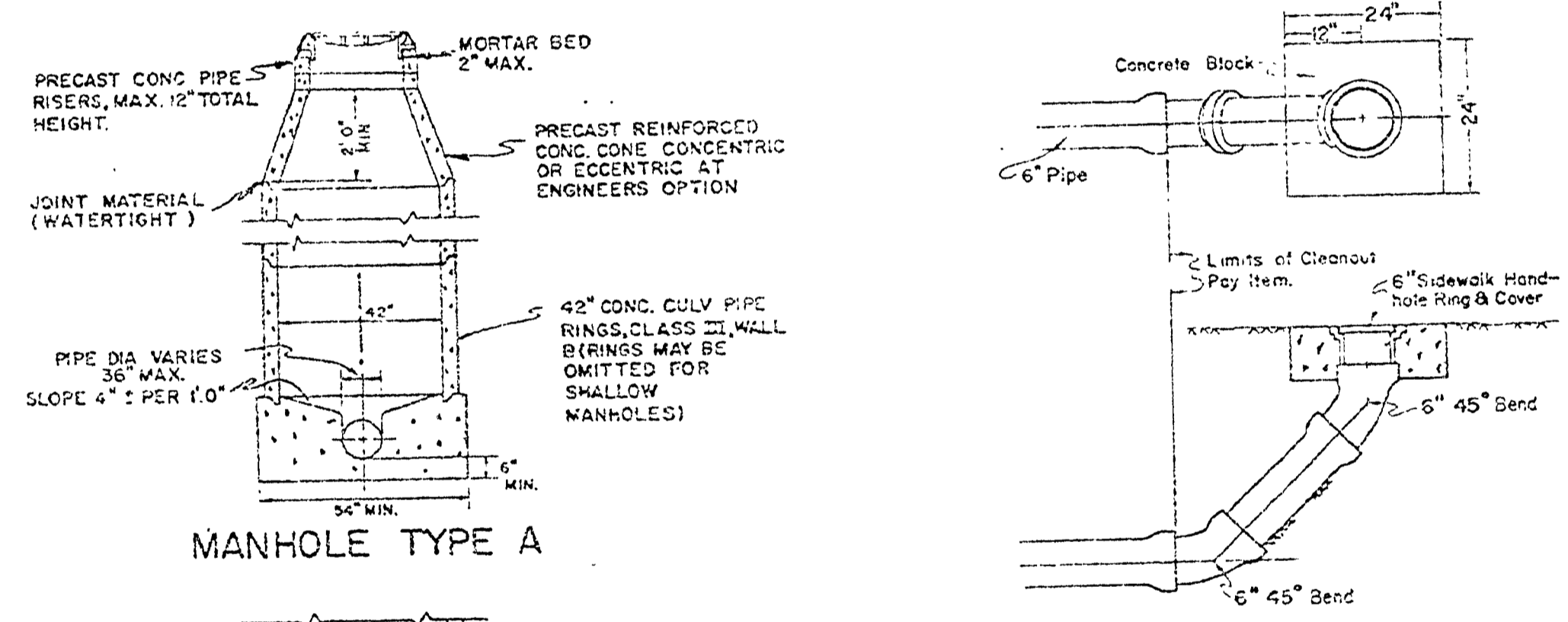
BEARING AREA OF THRUST BLOCKS IN SQ. FT.

| Fitting Size | Tee, Plug or Cap | 90° Bend | 45° Bend | 22-1/2° Bend | 11-1/4° Bend |
|--------------|------------------|----------|----------|--------------|--------------|
| 4" | 1.0 | 1.4 | 1.4 | 1.0 | --- |
| 6" | 2.1 | 3.0 | 3.0 | 1.6 | --- |
| 8" | 3.8 | 5.3 | 5.4 | 2.9 | 1.0 |
| 10" | 5.0 | 8.4 | 8.4 | 4.5 | 1.2 |
| 12" | 8.5 | 12.0 | 12.0 | 6.5 | 1.7 |
| 14" | 11.5 | 16.2 | 16.2 | 8.0 | 2.2 |
| 16" | 14.0 | 21.3 | 21.3 | 11.5 | 3.0 |
| 18" | 19.0 | 27.0 | 27.0 | 14.6 | 3.8 |
| 20" | 23.5 | 33.3 | 33.3 | 18.1 | 4.7 |
| 24" | 31.0 | 42.0 | 42.0 | 23.2 | 5.8 |

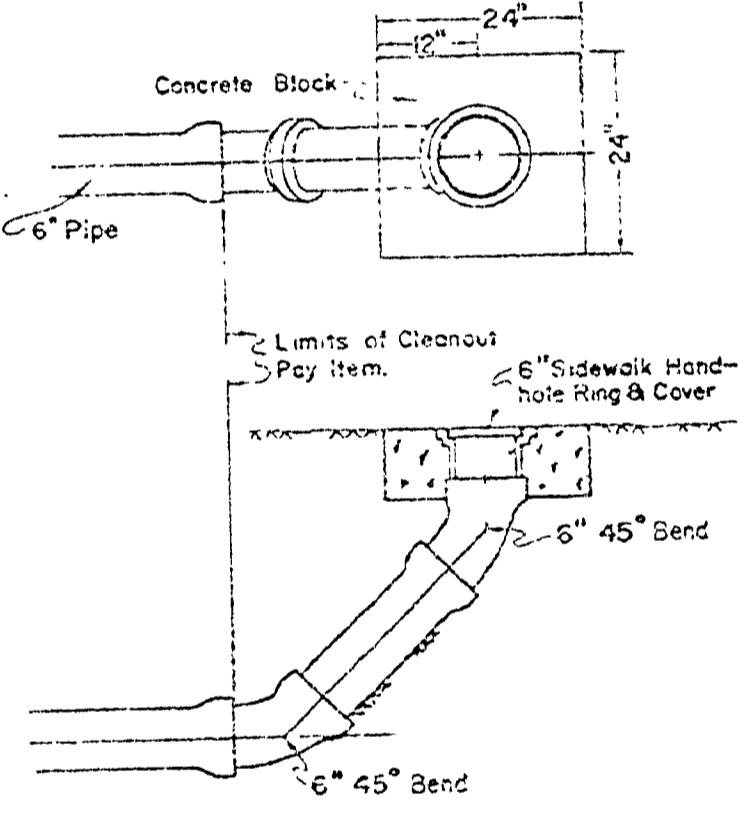
NOTE: Above bearing areas based on test pressure of 150 p.s.i. and an allowable soil bearing stress of 2,000 pounds per square foot. To compute bearing areas for different test pressures and soil bearing stresses, use the following equation: Bearing Area = (Test Pressure/150) x (2000/Soil Bearing Stress) x (Table Value).



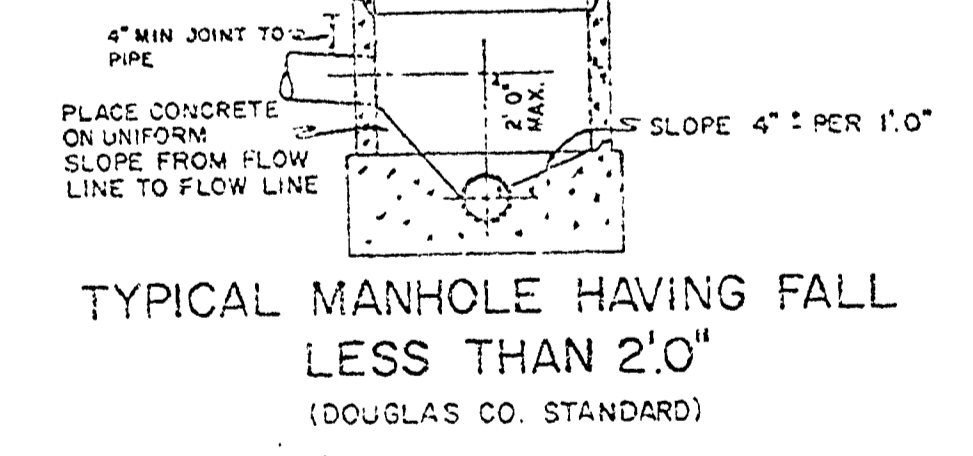
MANHOLE RING & COVER



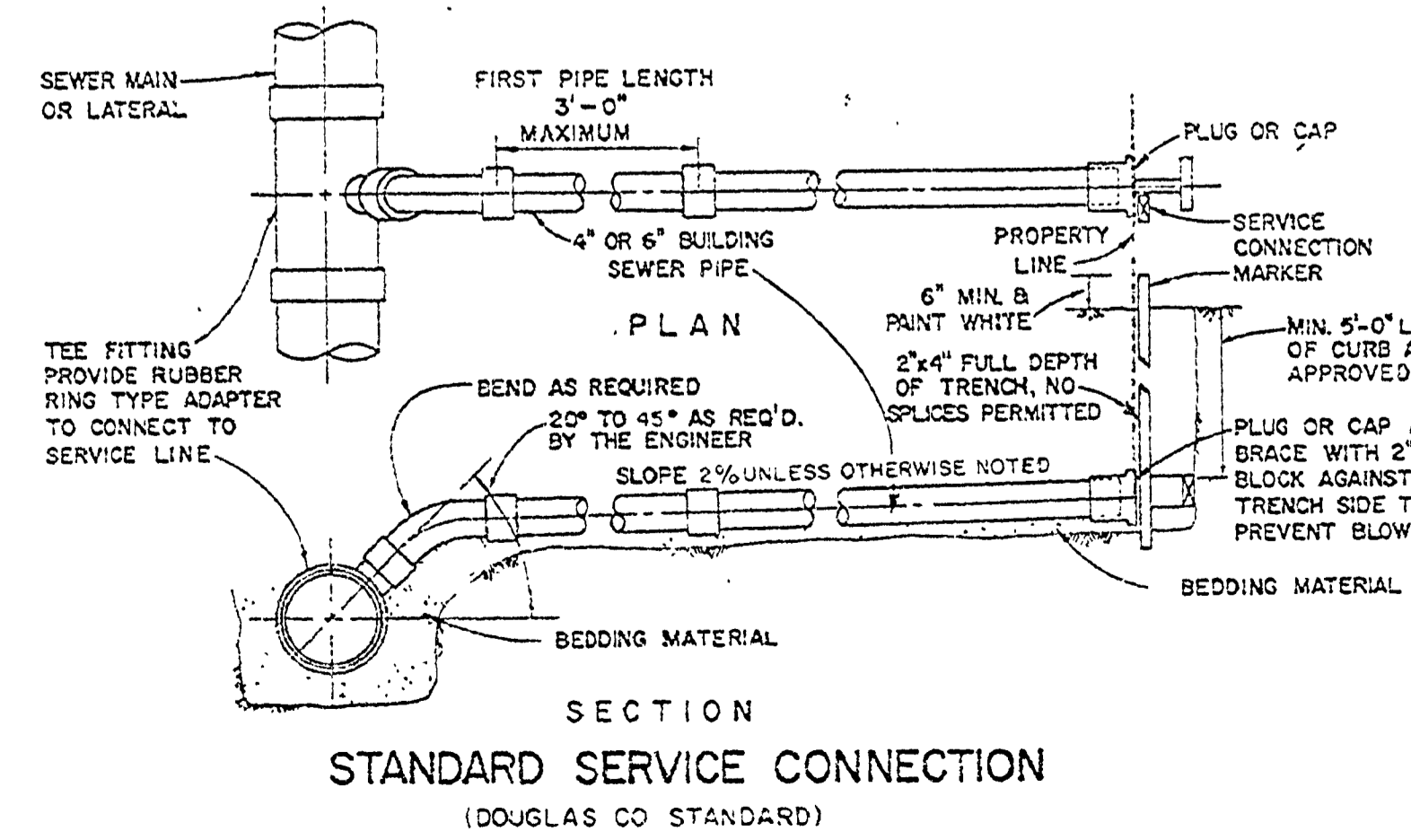
MANHOLE TYPE A



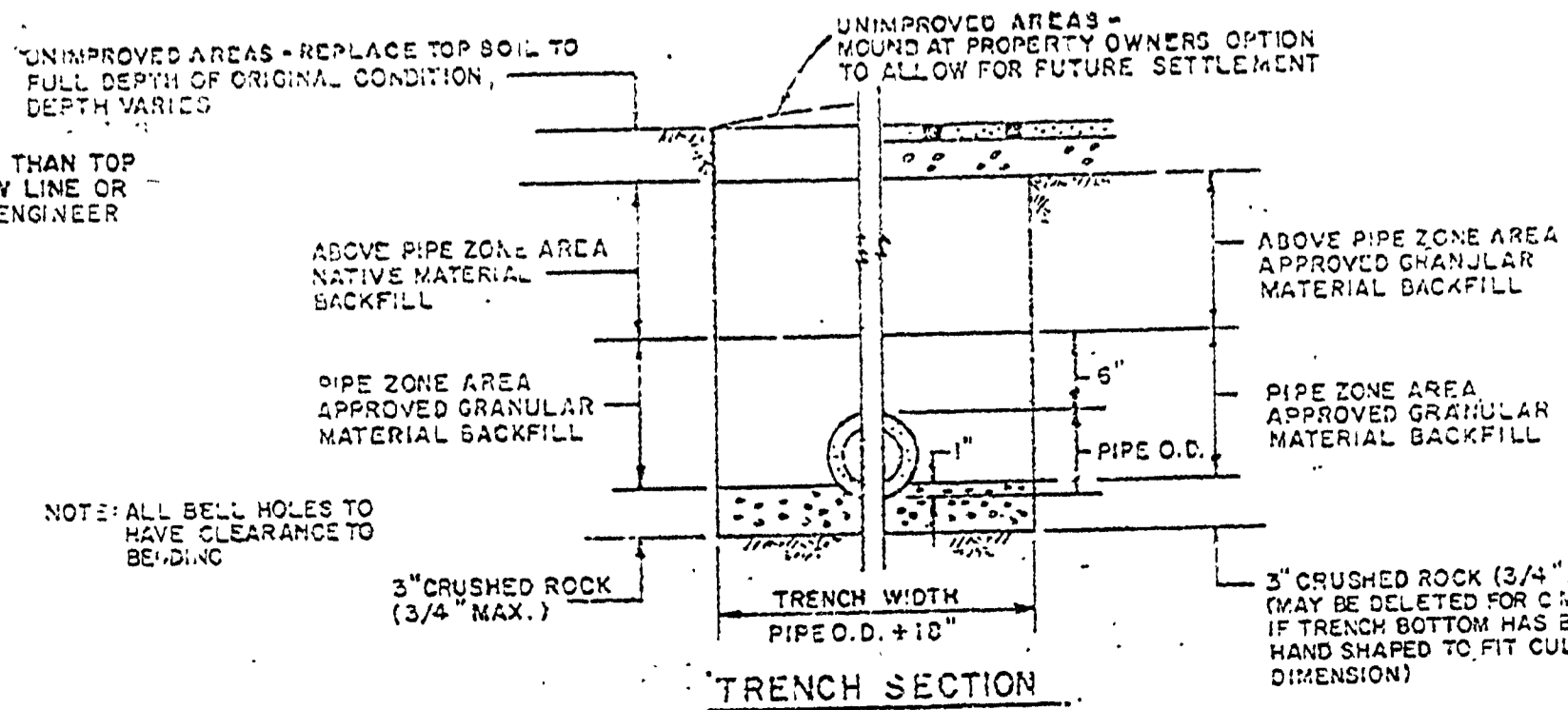
CLEANOUT DETAIL (DOUGLAS CO STANDARD)



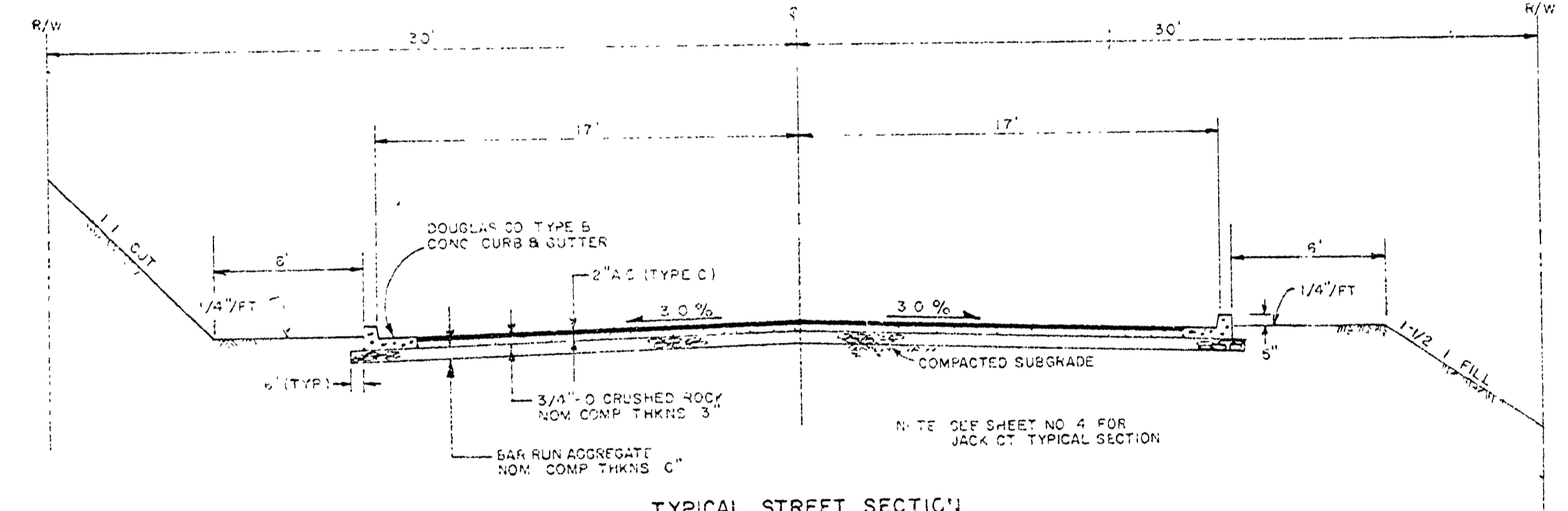
TYPICAL MANHOLE HAVING FALL LESS THAN 2'0" (DOUGLAS CO STANDARD)



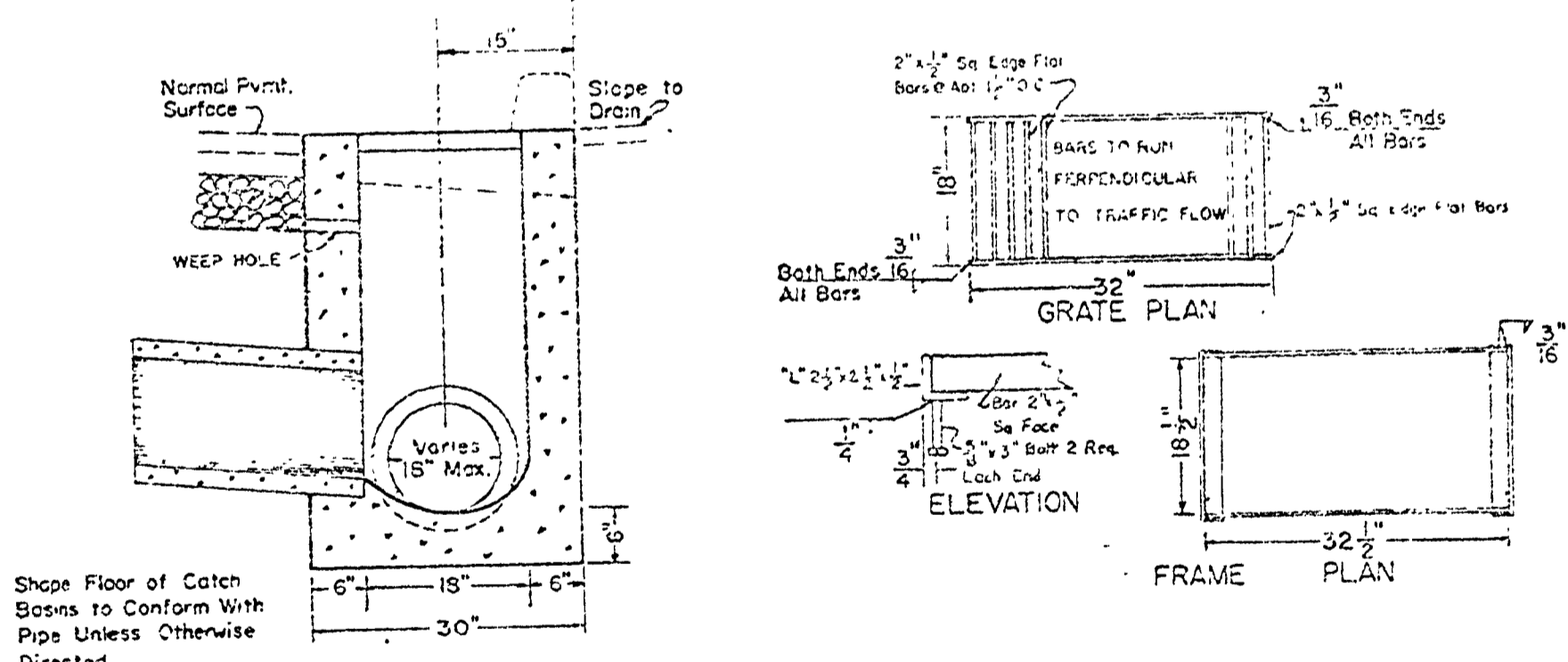
SECTION STANDARD SERVICE CONNECTION (DOUGLAS CO STANDARD)



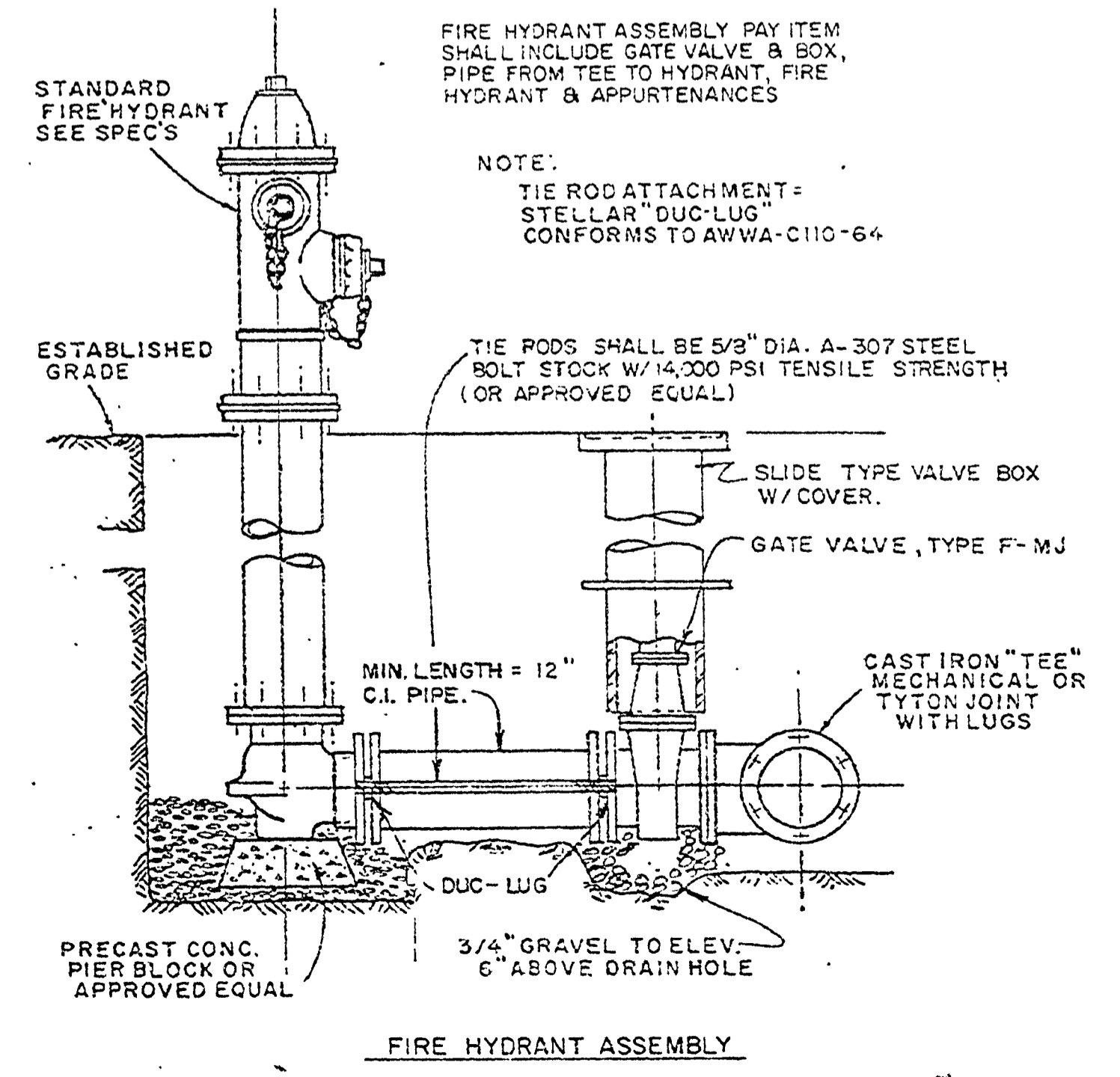
TRENCH SECTION



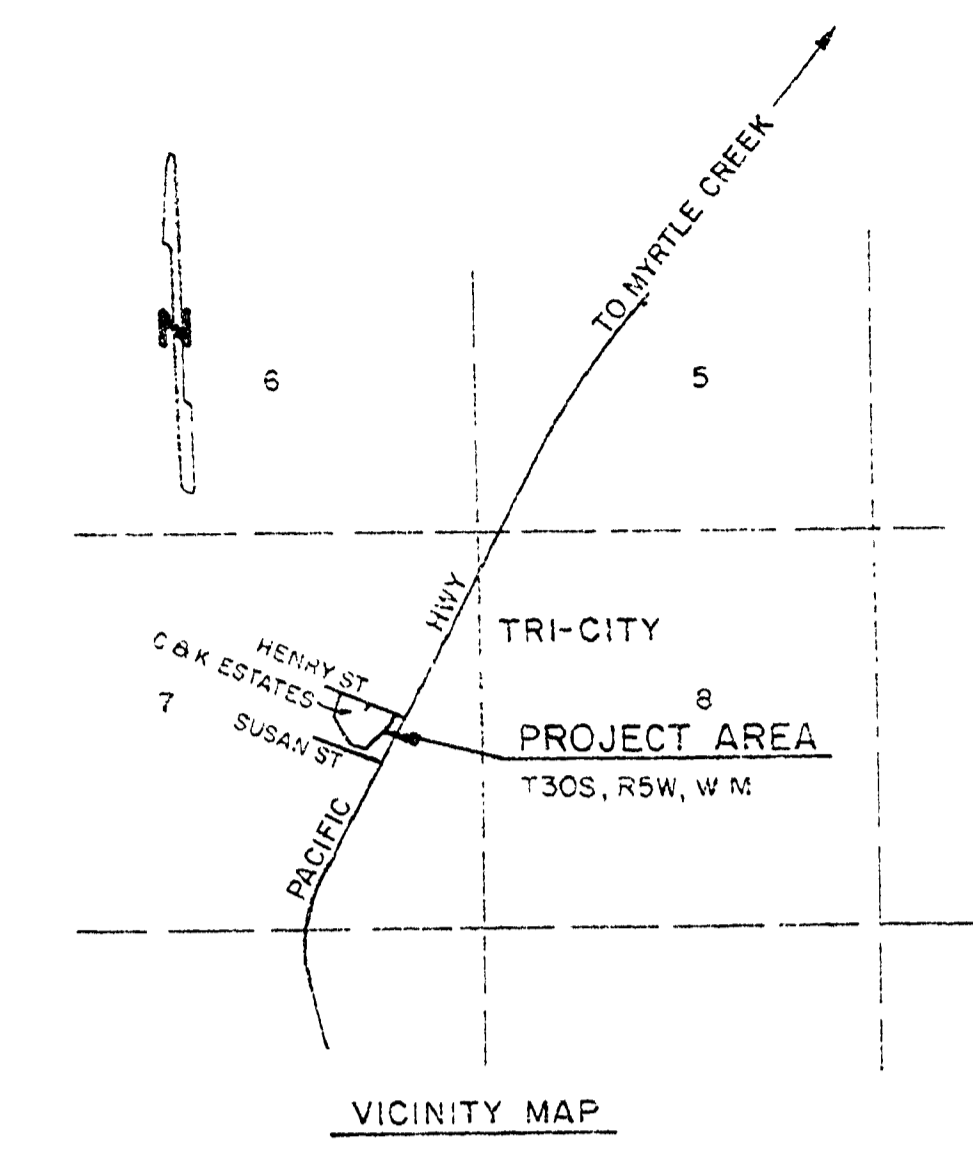
TYPICAL STREET SECTION (MILLY AVE)



CATCH BASIN DETAIL (DOUGLAS CO STANDARD TYPE 5)



FIRE HYDRANT ASSEMBLY



VICINITY MAP

- NOTES:
1. CURB CUTS FOR DRIVEWAYS ARE TO BE DONE BY OTHERS.
 2. ALL WATER AND SEWER SERVICE CONNECTIONS SHALL BE LOCATED NEAR THE CENTER OF THE LOTS. LOCATE SERVICES A MINIMUM OF 10 FEET APART.
 3. WATER MAIN INSTALLATION TO BEGIN AT THE INTERSECTION OF THE SOUTH RIGHT-OF-WAY LINE ON HENRY STREET AND THE WATER LINE.

- INDEX OF SHEETS
1. INDEX & MISCELLANEOUS DETAILS
 2. MILLY AVE - STREET & STORM DRAINAGE IMPROVEMENTS
 3. MILLY AVE - WATER & SANITARY SEWER IMPROVEMENTS
 4. JACK CT. - STREET, WATER & SANITARY SEWER IMPROVEMENTS

12-9-77 JVS

4

| | | | |
|--|-----------|----------------------|-------------|
| C & K BUILDERS | | MYRTLE CREEK, OREGON | |
| C & K ESTATES INDEX & MISCELLANEOUS DETAILS | | | |
| C & K ENGINEERING ENGINEERING ARTS BUILDING 3276 Commercial, S.E. SALEM, OREGON | | SHEET OF 4 | 1 |
| DESIGN: CPW | DRWG: PIW | CHECK: | SCALE: NONE |
| | | DATE: | FEB., 1977 |

MILLY AVE. (CO. RD. NO. 295E) S. 7th, T30S, R5W, W.M. #295
JACK CT. (CO. RD. NO. 295F)