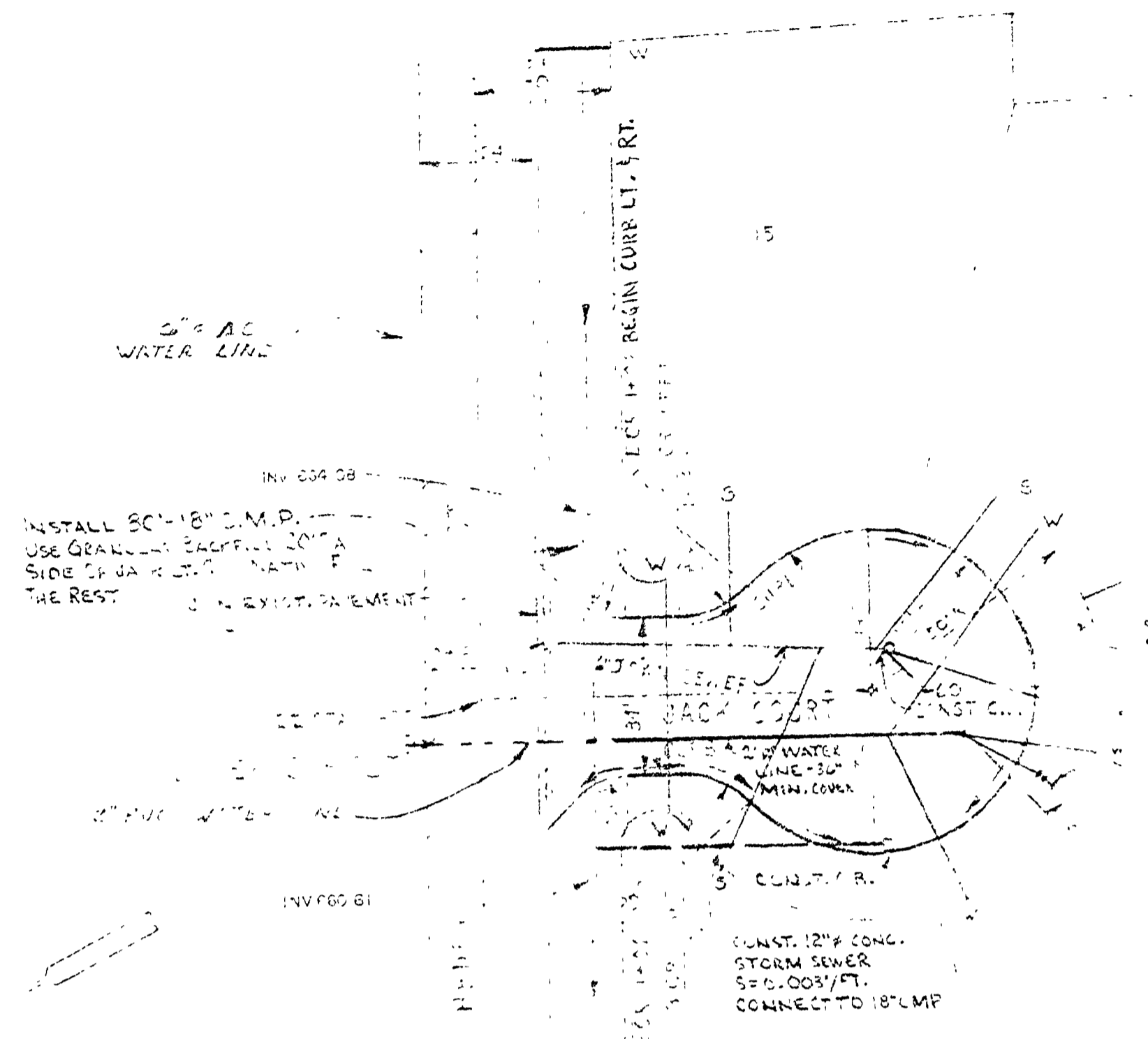
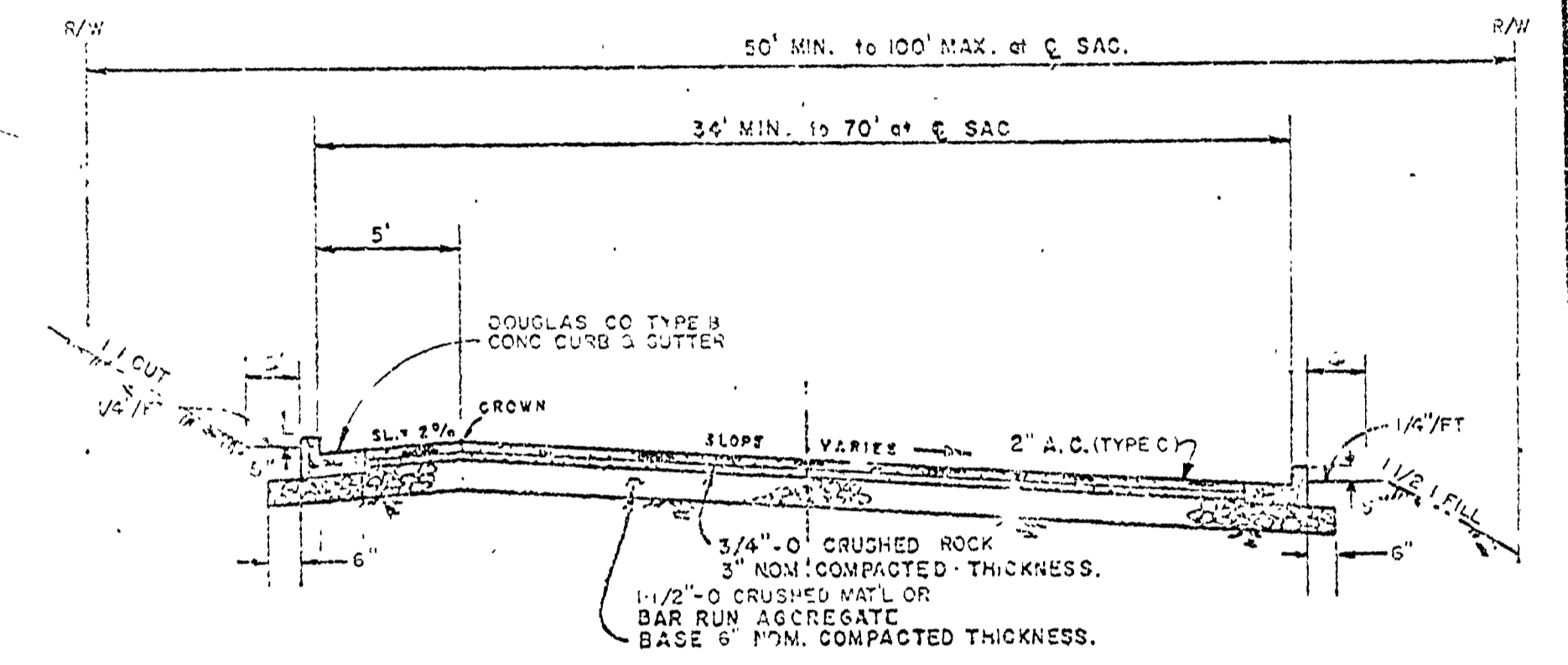
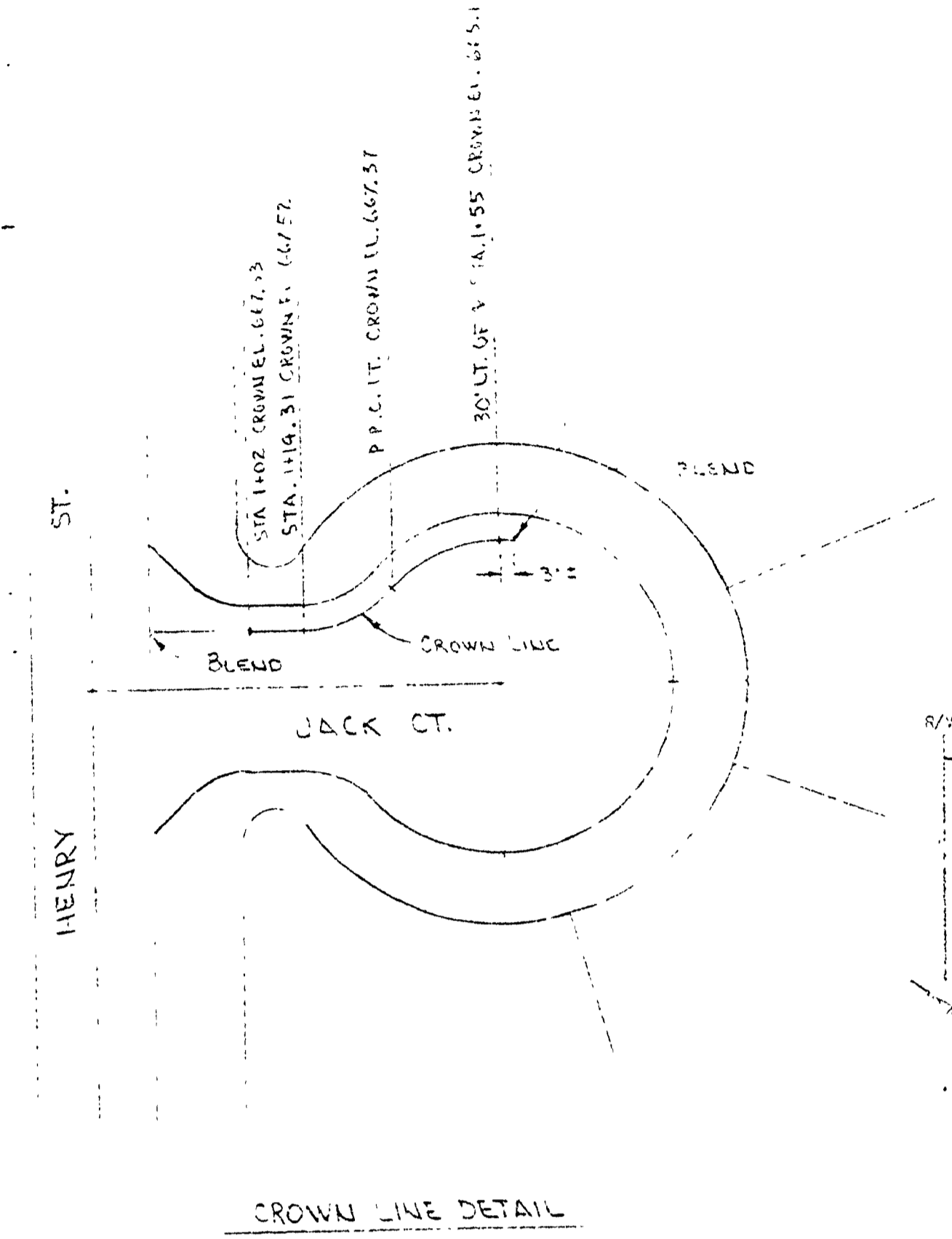
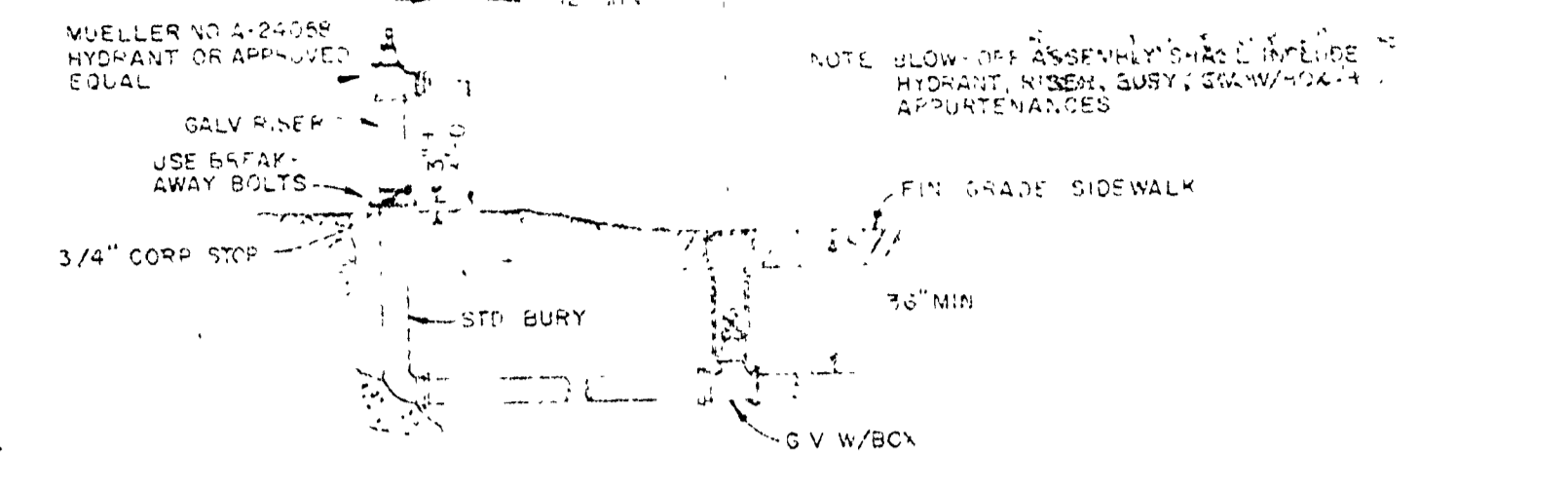


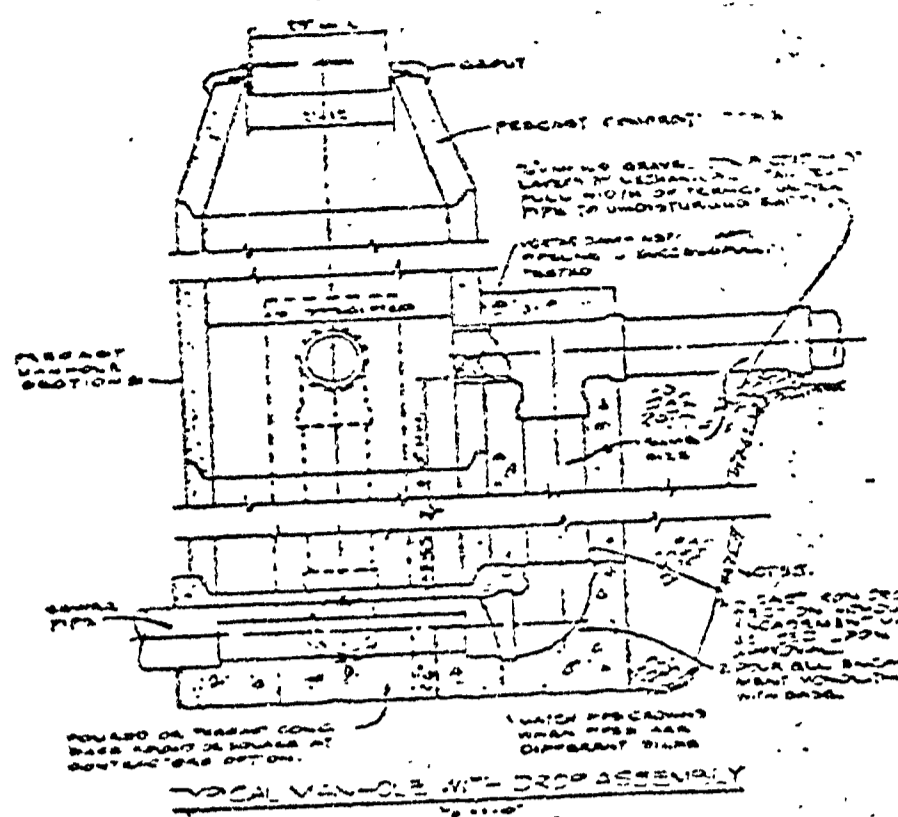
FILED

AUG 10 1987

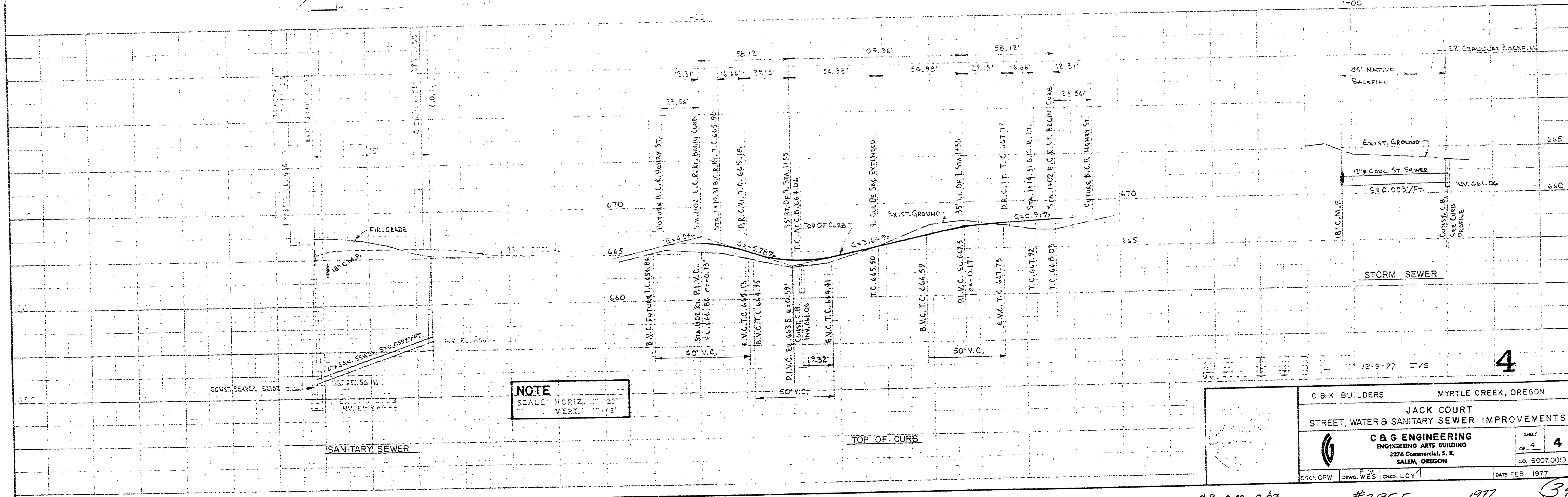
COUNTY SURVEYOR
CLATSOP COUNTY, ORE



NOTE
SCALE: 1" = 30' HORIZ.
1" = 5' VERT.



NOTE: (A) ALL SANITARY & STORM SEWER MAINS SHALL BE CONCRETE MATERIAL. (B) ALL SANITARY & STORM SEWER SERVICES SHALL BE GALVANIZED MATERIAL FROM MAIN TO 2' BEHIND CURB. ALL MATERIAL FROM THAT POINT TO R/W.



NOTE
SCALE: HORIZ. 1" = 30'
VERT. 1" = 5'

C & K BUILDERS MYRTLE CREEK, OREGON	
JACK COURT STREET, WATER & SANITARY SEWER IMPROVEMENTS	
C & G ENGINEERING ENGINEERING ARTS BUILDING 3276 Commercial, S. E. SALEM, OREGON	
DATE FEB. 1977	SHEET 4 OF 4

M.P. 0-00-0.02 #295F 1977 (34D)

00000002