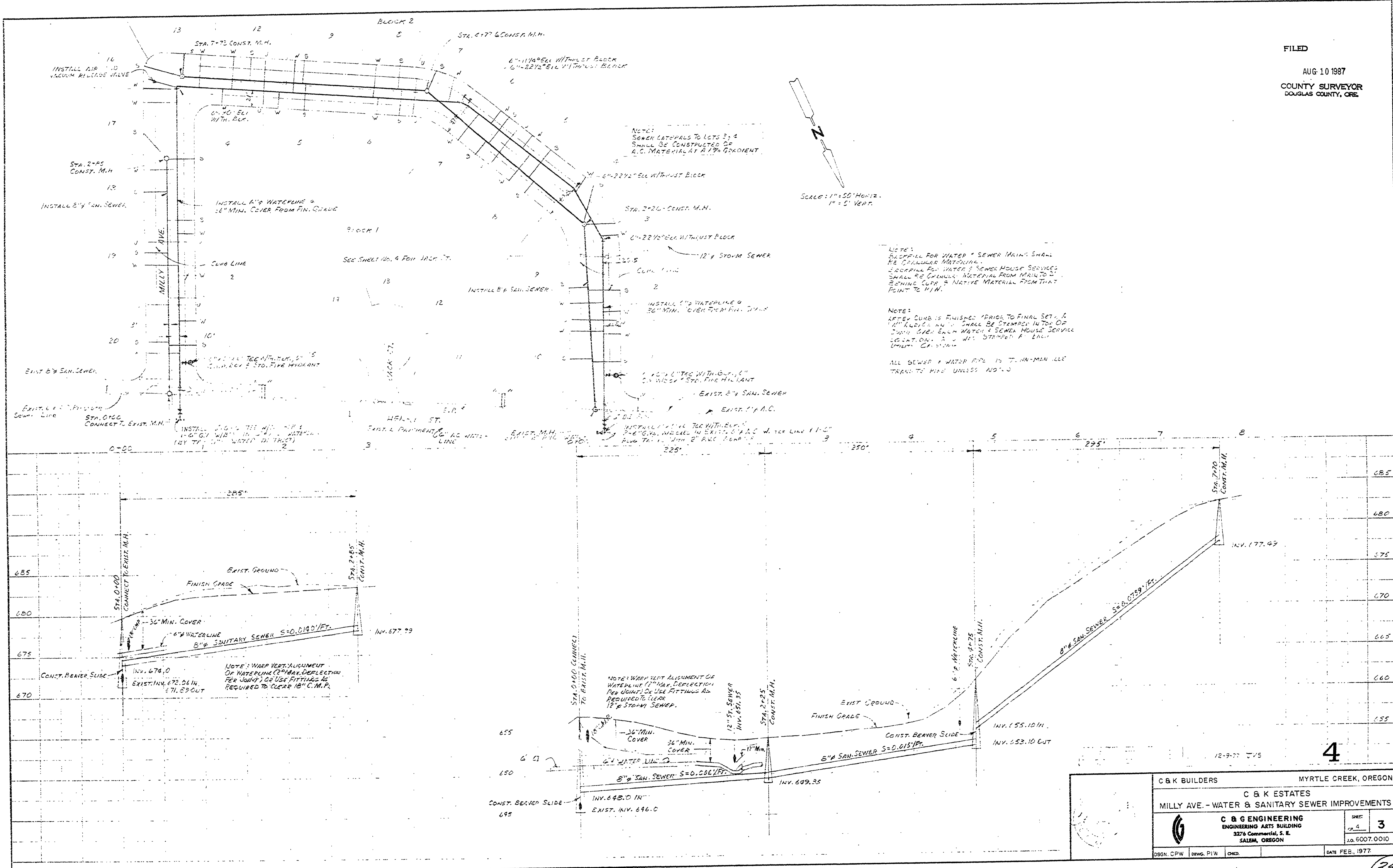


FILED

AUG 10 1987

COUNTY SURVEYOR  
DOUGLAS COUNTY, ORE.



NOTE:  
SEWER LATERALS TO LOTS 3 & 4  
SHALL BE CONSTRUCTED OF  
R.C. MATERIAL AT 1% GRADIENT

SCALE: 1"=50' HORIZ.  
1"=5' VERT.

NOTE:  
BACKFILL FOR WATER & SEWER MAINS SHALL  
BE GRANULAR MATERIAL.  
BACKFILL FOR WATER & SEWER HOUSE SERVICES  
SHALL BE GRANULAR MATERIAL FROM MAIN TO  
BEHIND CURB & NATIVE MATERIAL FROM THAT  
POINT TO M.H.

NOTE:  
AFTER CURB IS FINISHED PRIOR TO FINAL SET, A  
1" X 1" ALUMINUM MARKER SHALL BE STAMPED INTO TOP OF  
CURB OVER EACH WATER & SEWER HOUSE SERVICE  
LOCATION. ON 2" X 2" W/1" STAMPED "A" ENVI  
UTILITY COMPANY

ALL SEWER & WATER PIPE IS T-111-MAN HOLE  
TRANSITS PIPE UNLESS NOTED

NOTE: WARP VERT. ALIGNMENT  
OF WATERLINE (2" MAX. DEFLECTION  
PER JOINT) OR USE FITTINGS AS  
REQUIRED TO CLEAR 18" C.M.P.

NOTE: WARP VERT. ALIGNMENT OF  
WATERLINE (2" MAX. DEFLECTION  
PER JOINT) OR USE FITTINGS AS  
REQUIRED TO CLEAR  
18" STORM SEWER.

C & K BUILDERS		MYRTLE CREEK, OREGON	
C & K ESTATES			
MILLY AVE. - WATER & SANITARY SEWER IMPROVEMENTS			
C & K ENGINEERING		SHEET 3	
ENGINEERING ARTS BUILDING		NO. 5007.0010	
327 1/2 Commercial, S. E.		DATE FEB., 1977	
SALEM, OREGON			
DSGN. CPW	DRAWN. PIW	CHECKED.	

M.P. 0.00 - 0.21

#295E

1977

34C

00000022

4