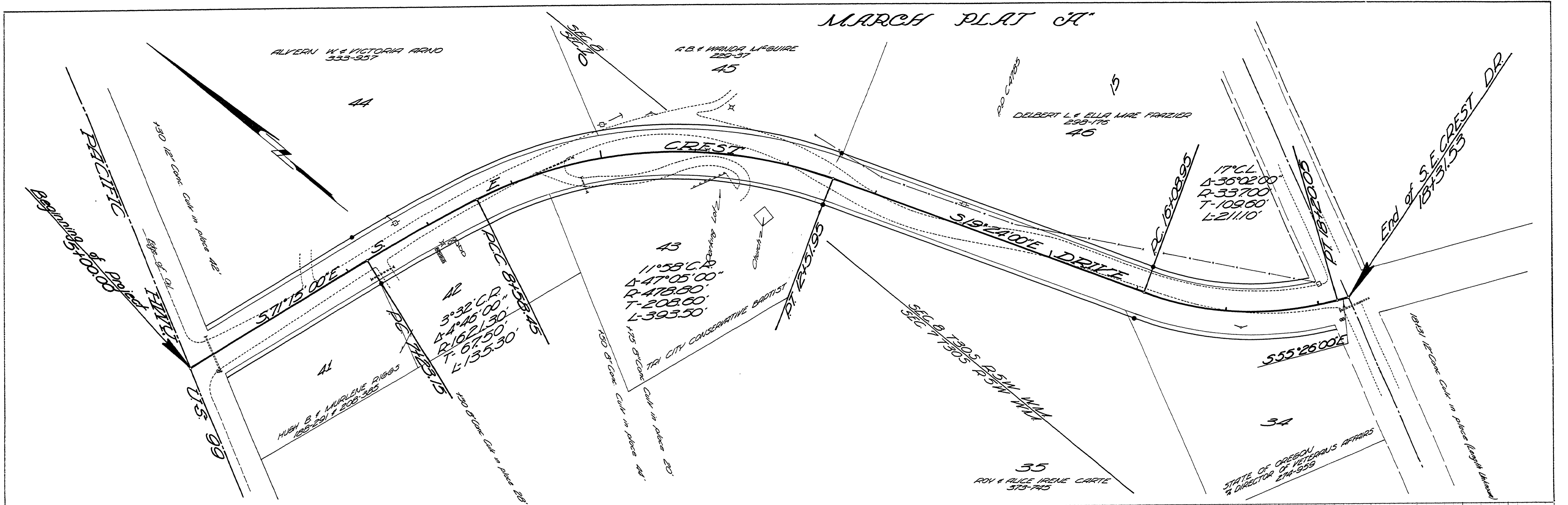
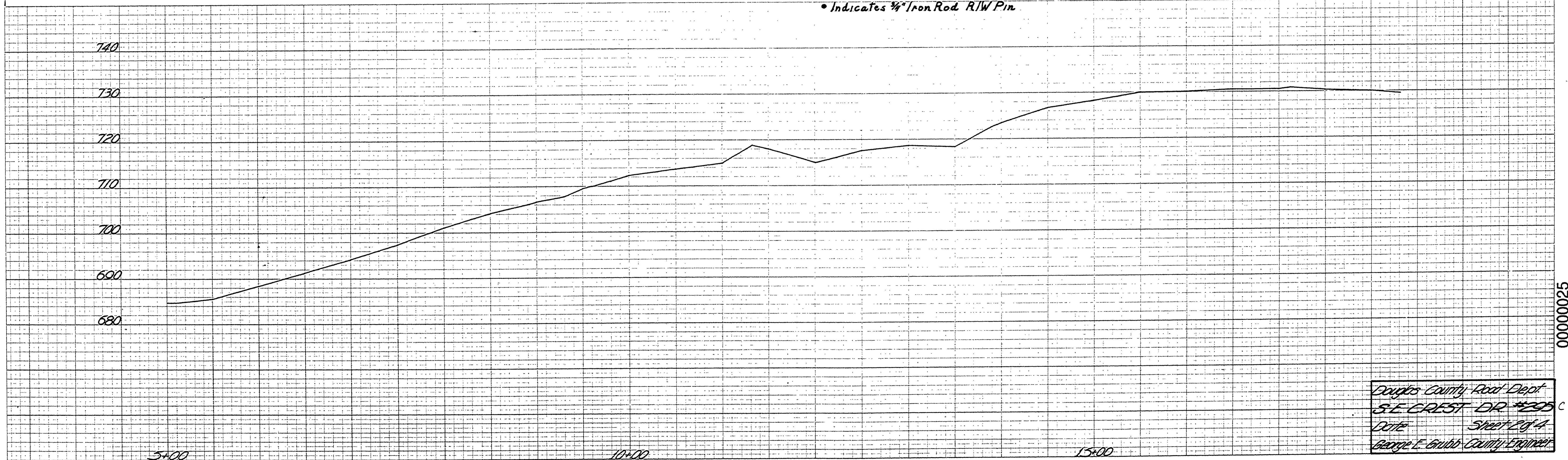


DATE	BY	REVISIONS
		1. SURVEYED
		2. PLANNED
		3. CHECKED
		4. APPROVED
		5. ASSESSED
		6. RECALCULATED



DATE	BY	REVISIONS
		1. SURVEYED
		2. PLANNED
		3. CHECKED
		4. APPROVED
		5. ASSESSED
		6. RECALCULATED



Douglas County Road Dept.
 SE CREST DR #295 C
 Date _____
 George E. Grubb County Engineer