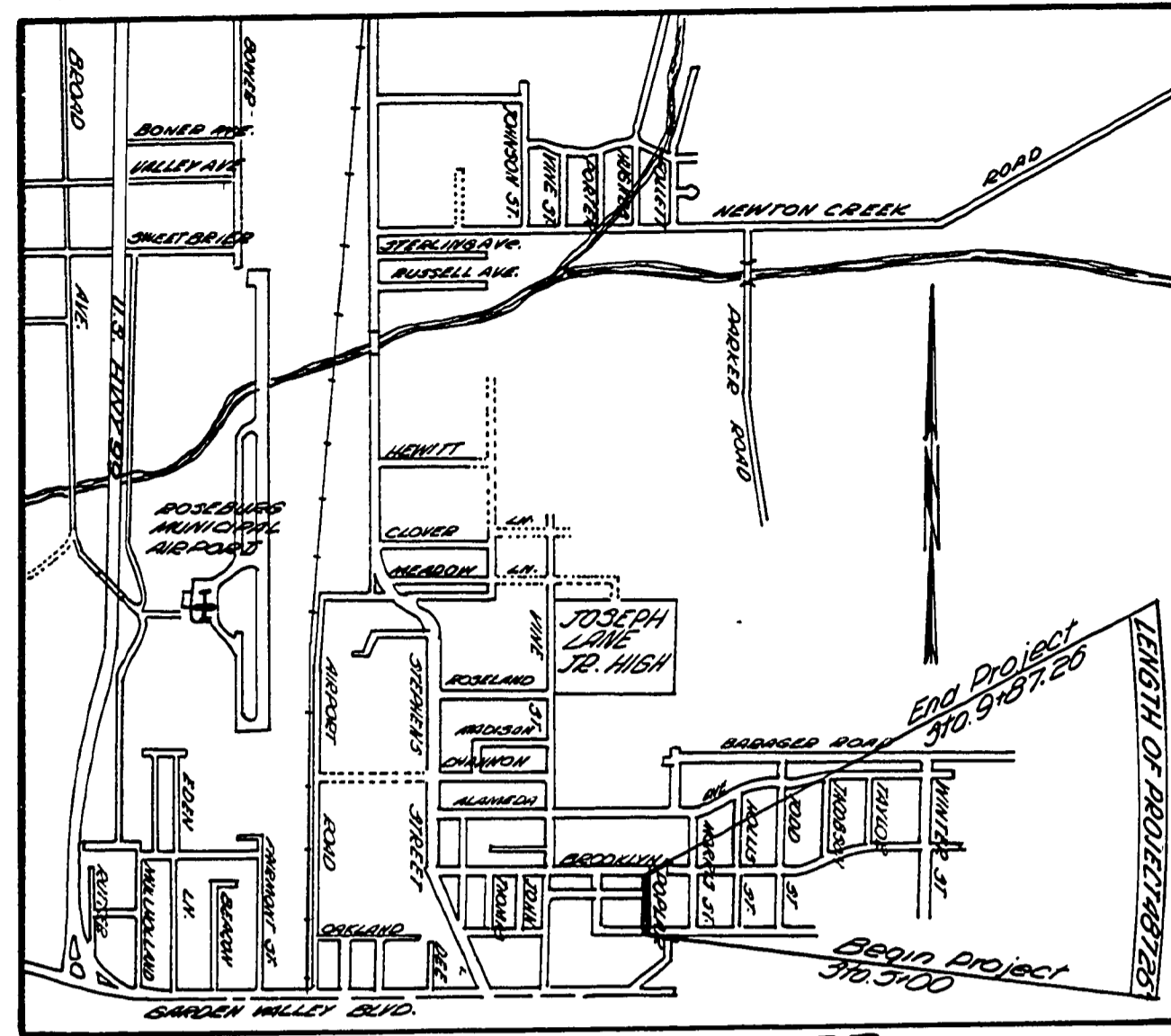
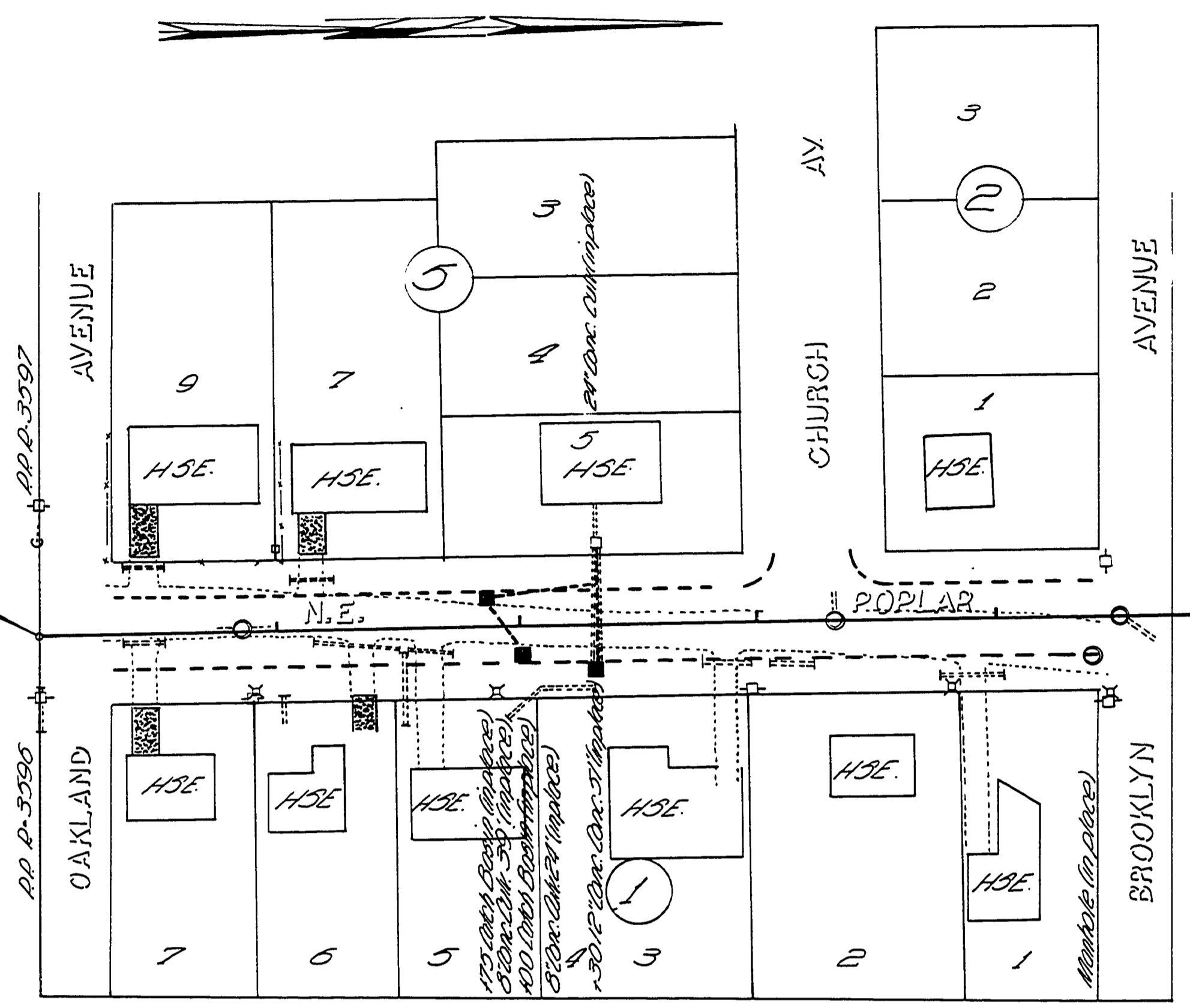


SEC. 18, T. 27 S., R. 5 W. W.M.



VICINITY MAP

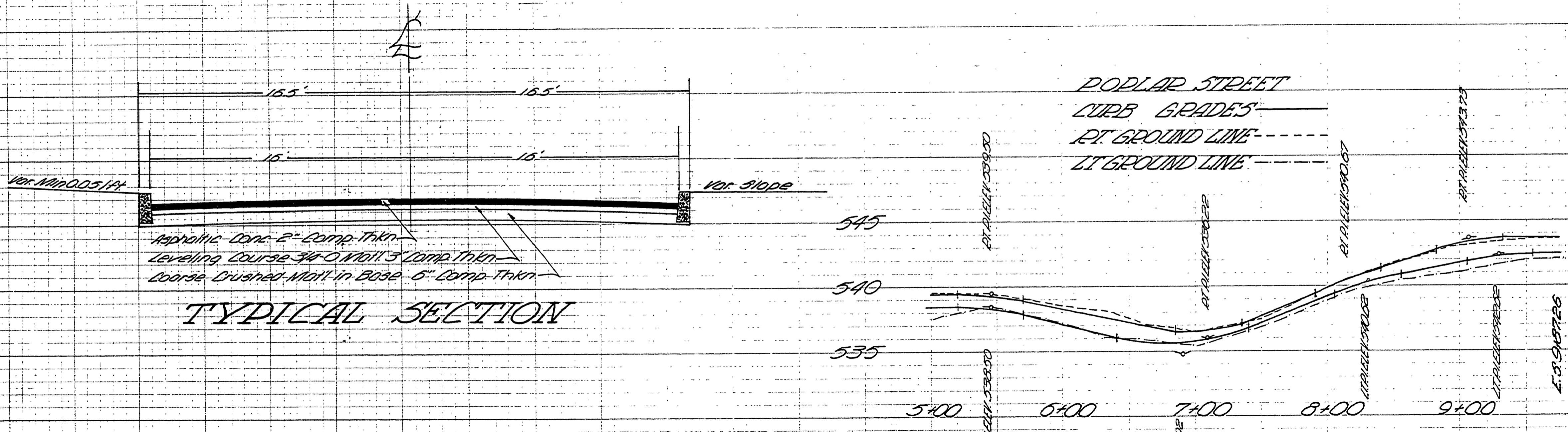
DATE _____ BY _____
 FINAL SURVEY PLOTTED _____
 NOTE BOOK _____
 AREAS CHECKED _____



END PROJECT 310.3+00

END PROJECT 310.9+00

DATE _____ BY _____
 ORIGINAL SURVEY PLOTTED _____
 NOTE BOOK _____
 AREAS CHECKED _____



TYPICAL SECTION



APPROVED BY DOUGLAS COUNTY BOARD OF COMMISSIONERS
 THIS DAY February 25, 1966
Ray E. Down
 COMMISSIONER
Ed R. Adams
 COMMISSIONER
A. H. May
 COUNTY ENGINEER

FILED
 RECEIVED
 MAR 3 1966
 COUNTY SURVEYOR
 DOUGLAS COUNTY, ORE.

Douglas County, Ed. Dept.
POPLAR ST #291
 Date 2.25.1966 3rd of 1
 A. H. May County Eng.