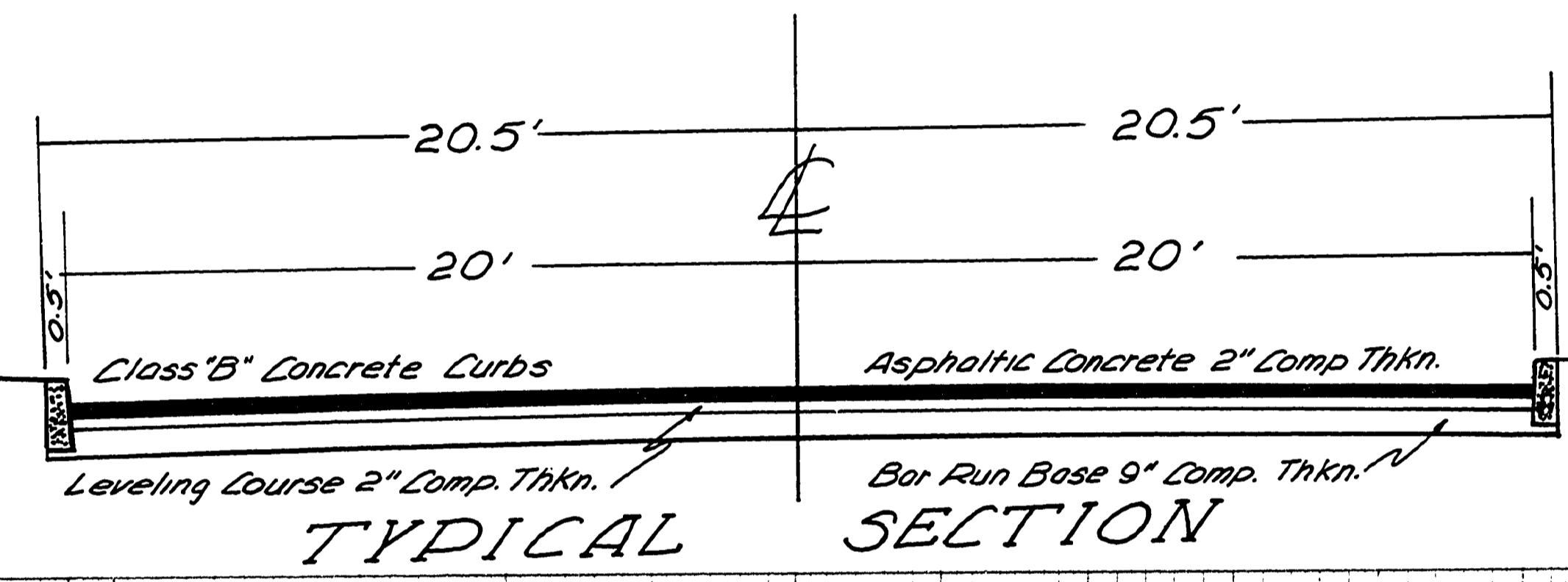
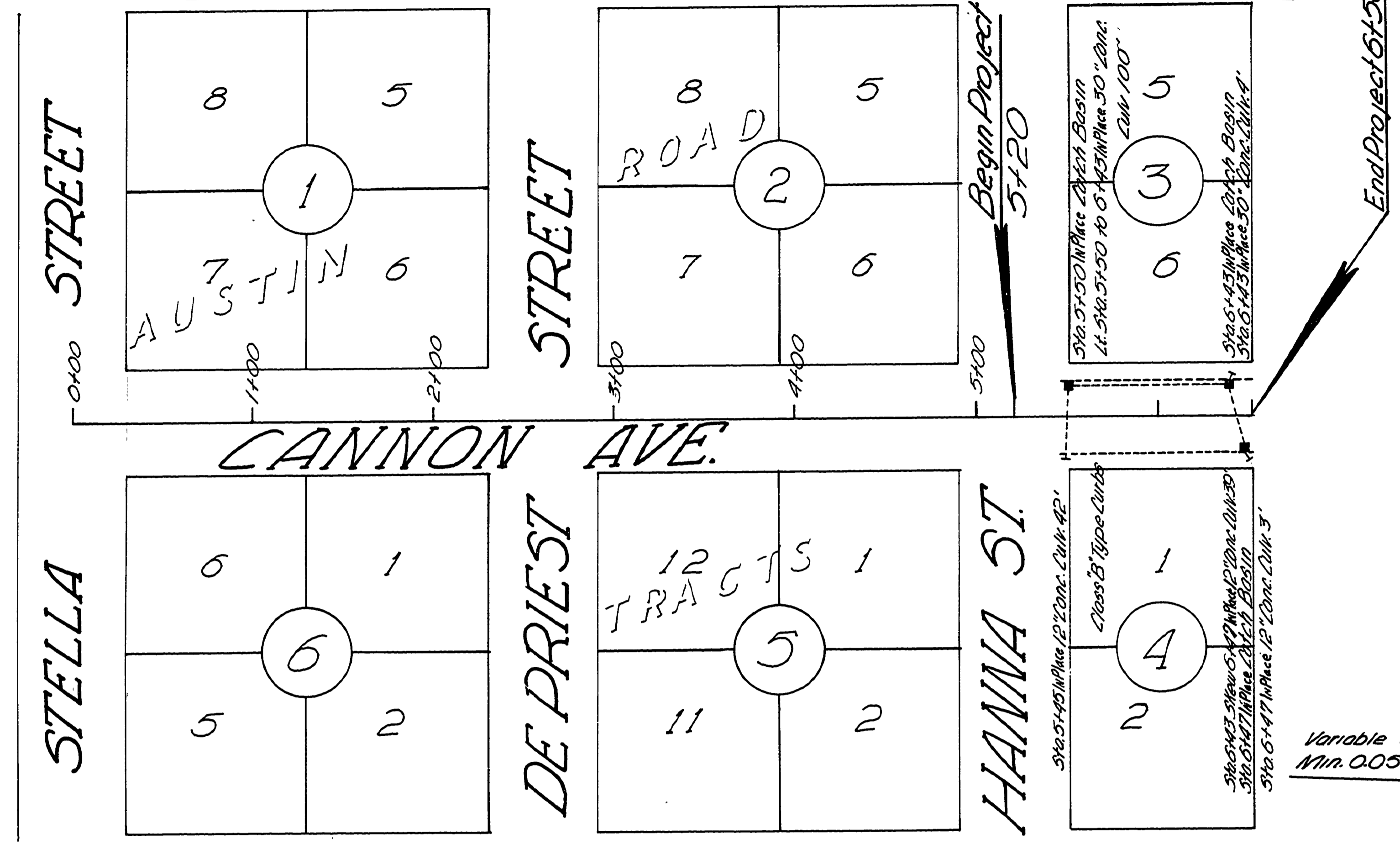


DATE	
BY	
REVISIONS	
NO.	
DATE	
BY	
REVISIONS	
NO.	
DATE	
BY	
REVISIONS	
NO.	

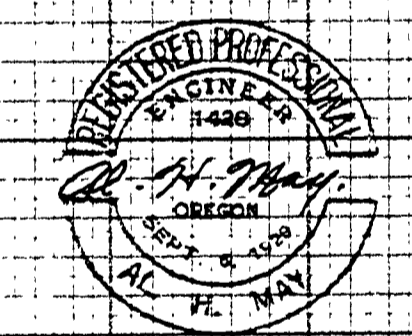
DATE	
BY	
REVISIONS	
NO.	
DATE	
BY	
REVISIONS	
NO.	
DATE	
BY	
REVISIONS	
NO.	

SEC. 11 T. 28 S. R. 6 W. W. M.



SCALE 1" = 50'

Resolution 21814



DOUGLAS COUNTY RD. DEPT.
CANNON AVE. 289
 DATE AUG. 1965 SHEET 1 OF 1
 AL HANAY COUNTY ENG.

00000003