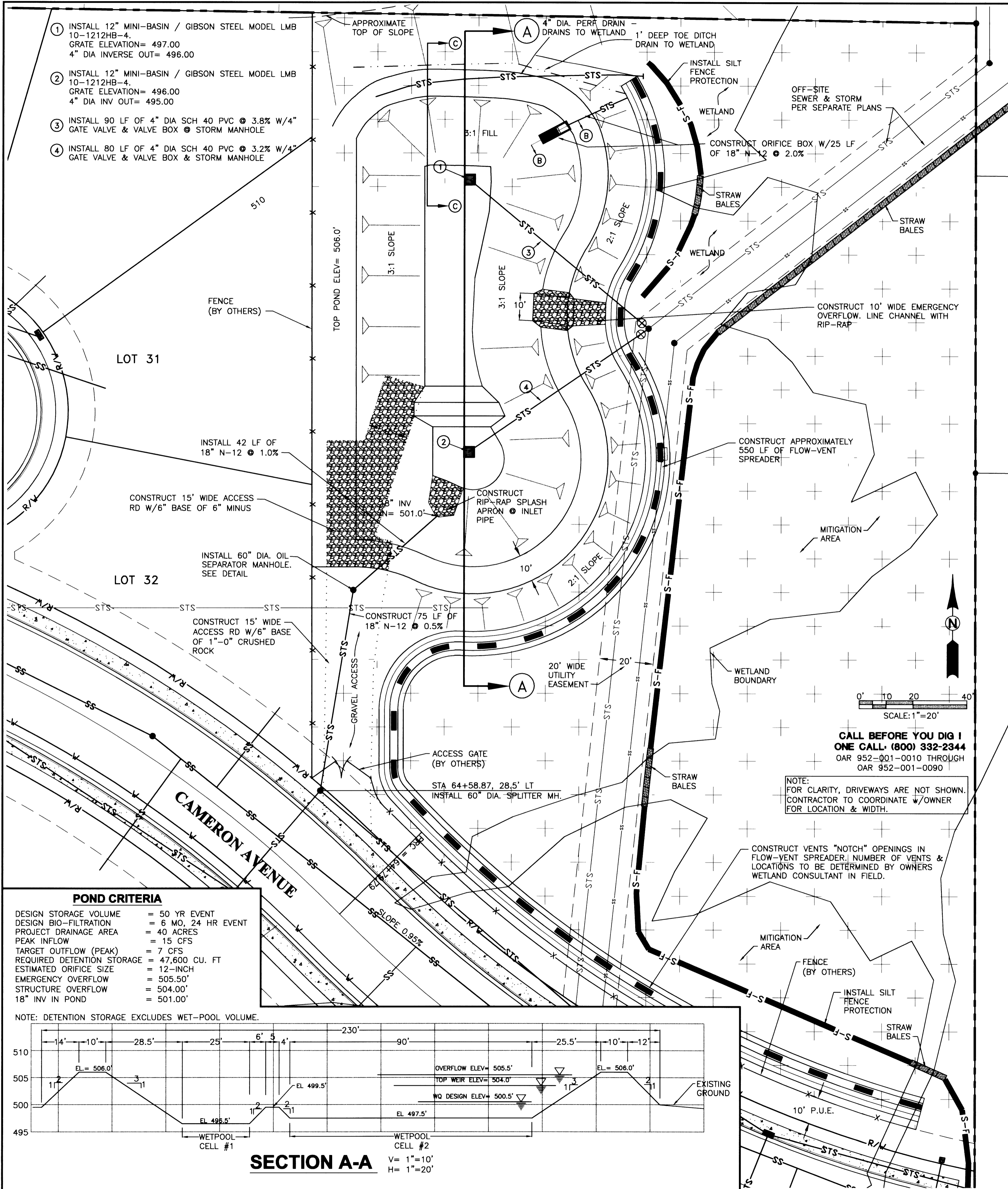


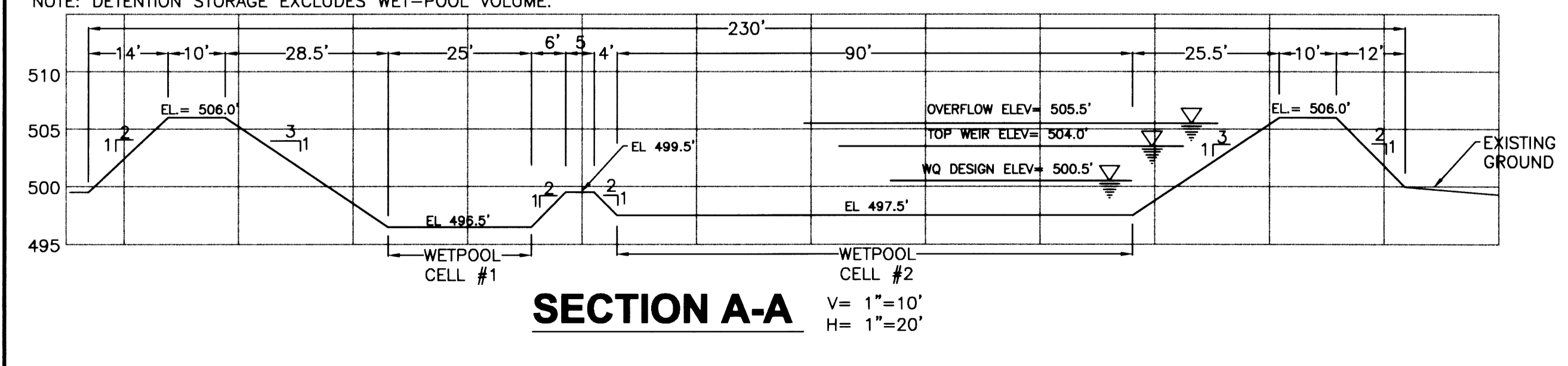
- INSTALL 12" MINI-BASIN / GIBSON STEEL MODEL LMB 10-1212HB-4. GRATE ELEVATION= 497.00 4" DIA INVERSE OUT= 496.00
- INSTALL 12" MINI-BASIN / GIBSON STEEL MODEL LMB 10-1212HB-4. GRATE ELEVATION= 496.00 4" DIA INV OUT= 495.00
- INSTALL 90 LF OF 4" DIA SCH 40 PVC @ 3.8% W/4" GATE VALVE & VALVE BOX @ STORM MANHOLE
- INSTALL 80 LF OF 4" DIA SCH 40 PVC @ 3.2% W/4" GATE VALVE & VALVE BOX @ STORM MANHOLE



**POND CRITERIA**

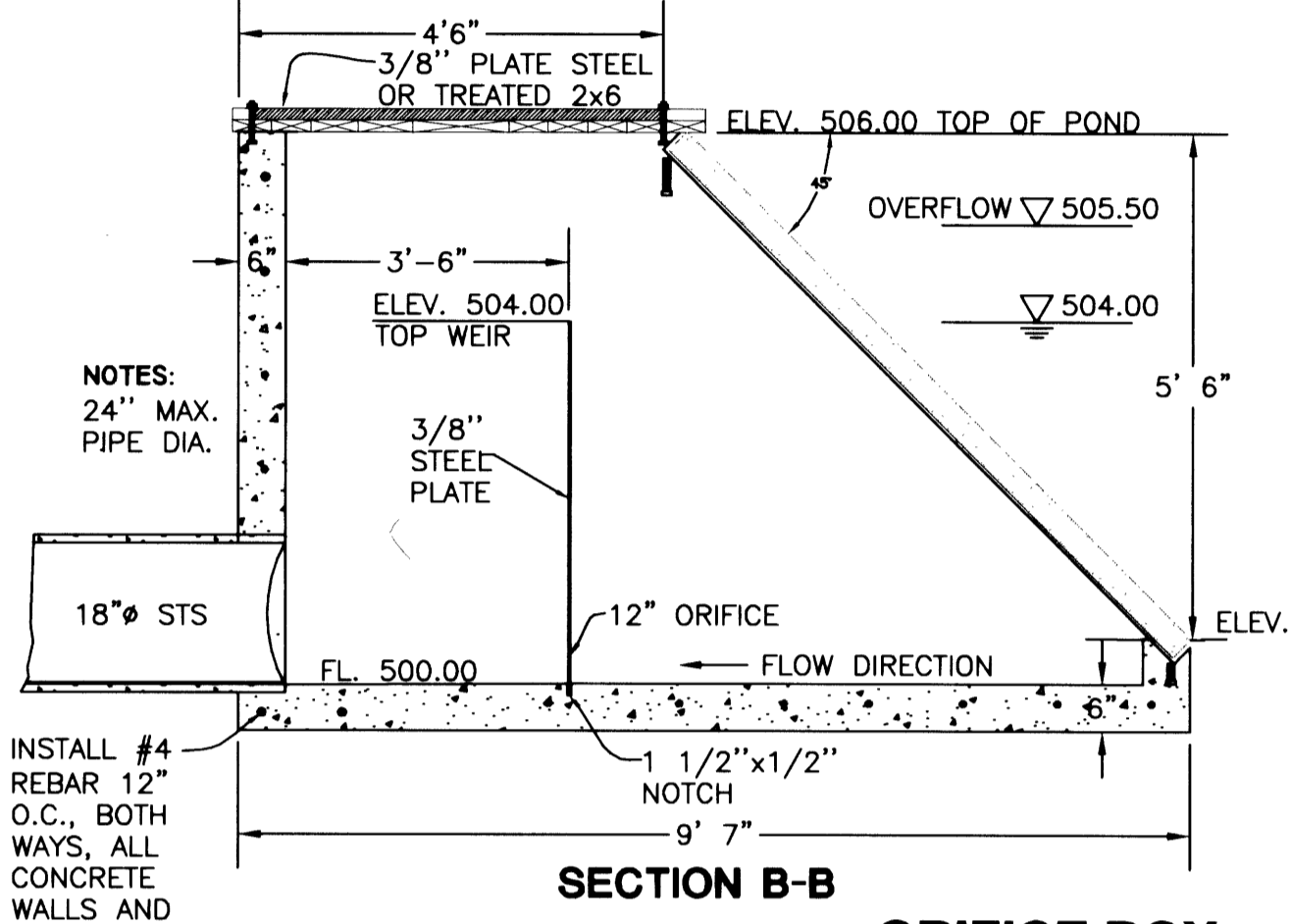
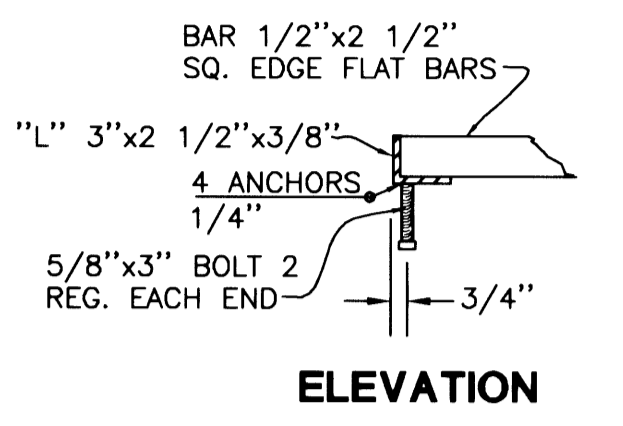
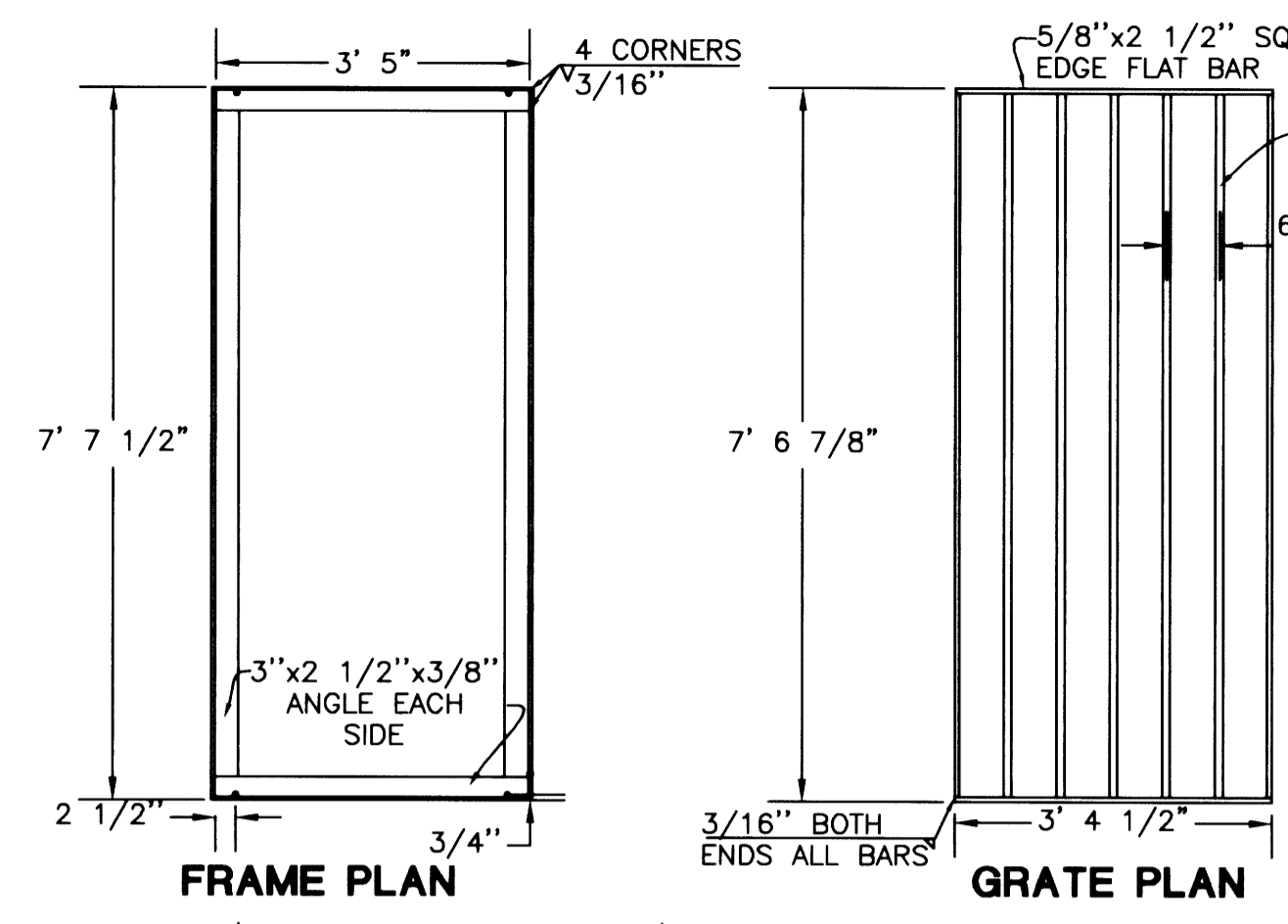
DESIGN STORAGE VOLUME	= 50 YR EVENT
DESIGN BIO-FILTRATION	= 6 MO, 24 HR EVENT
PROJECT DRAINAGE AREA	= 40 ACRES
PEAK INFLOW	= 15 CFS
TARGET OUTFLOW (PEAK)	= 7 CFS
REQUIRED DETENTION STORAGE	= 47,600 CU. FT
ESTIMATED ORIFICE SIZE	= 12-INCH
EMERGENCY OVERFLOW	= 505.50'
STRUCTURE OVERFLOW	= 504.00'
18" INV IN POND	= 501.00'

NOTE: DETENTION STORAGE EXCLUDES WET-POOL VOLUME.

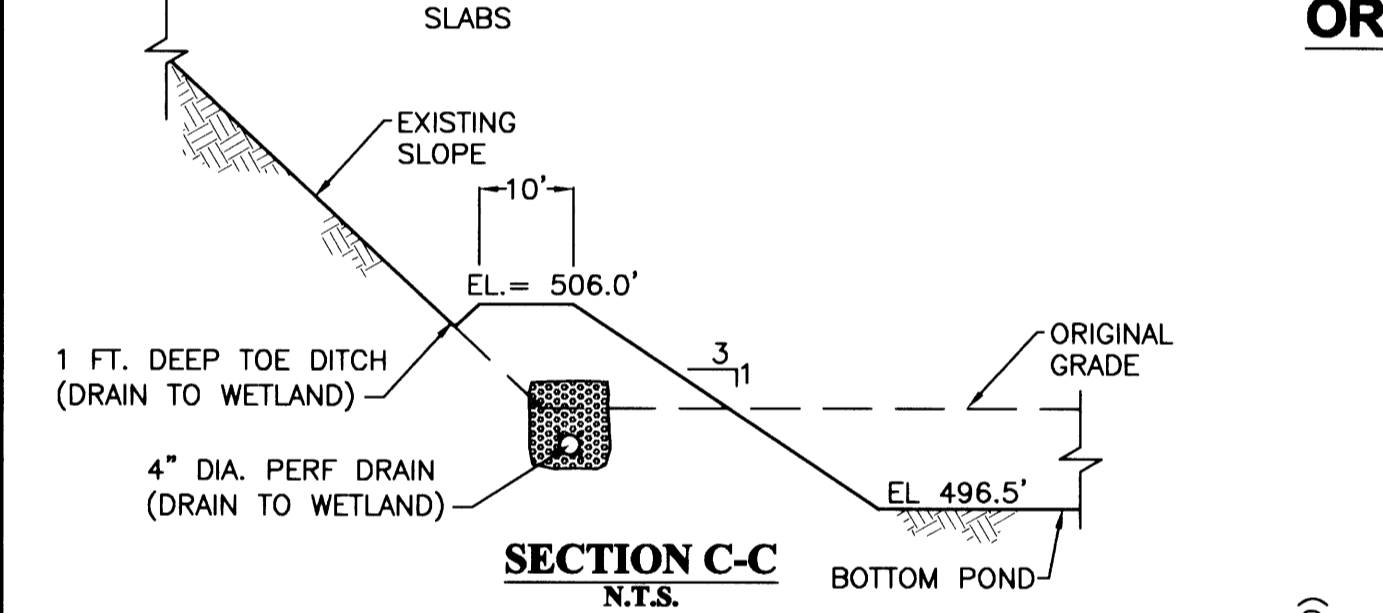


**SECTION A-A**  
V= 1"=10'  
H= 1"=20'

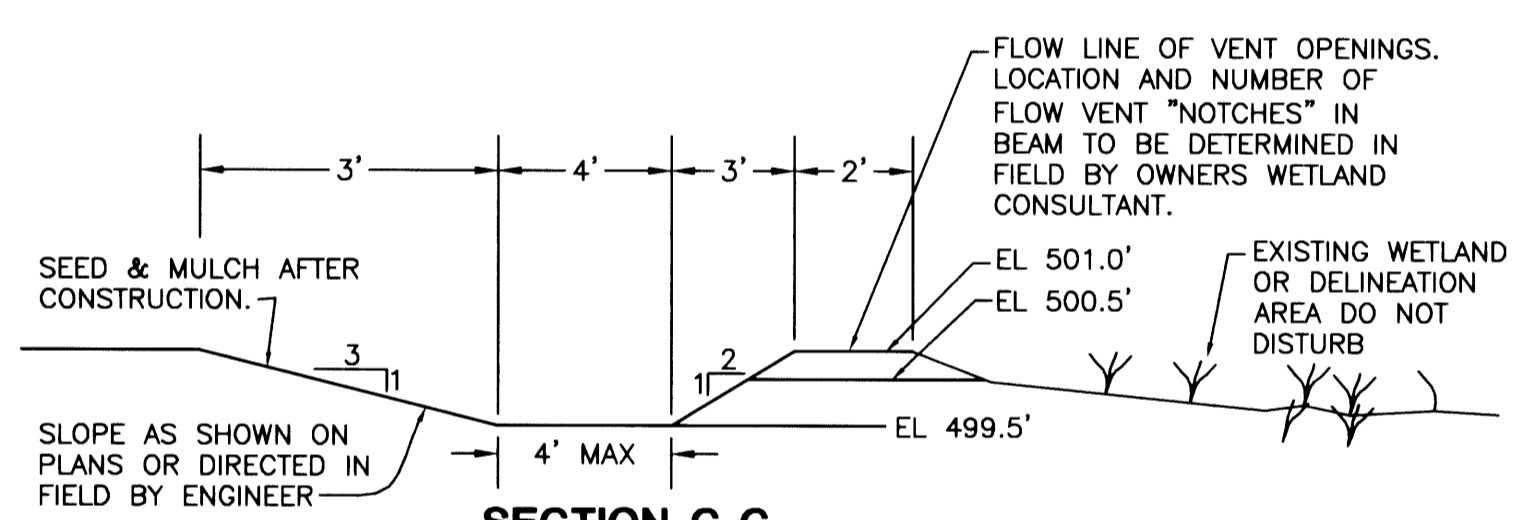
**FILED**  
Date: 3/14/2006 By: JP  
This survey consists of:  
Map:  
Narrative:  
Corner Rpt:  
**DOUGLAS COUNTY SURVEYOR**



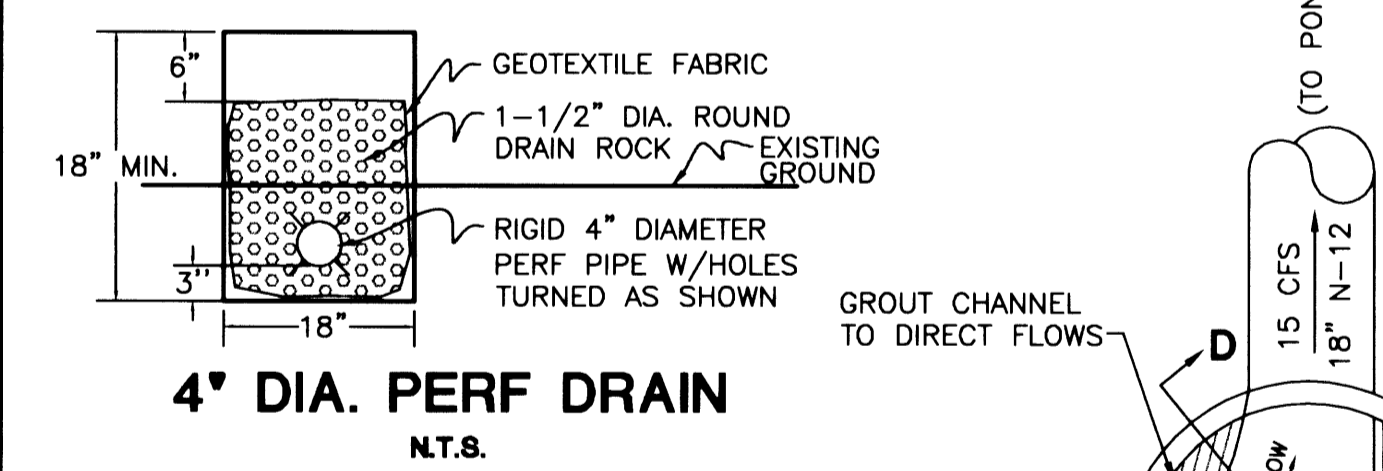
**ORIFICE BOX**  
N.T.S.



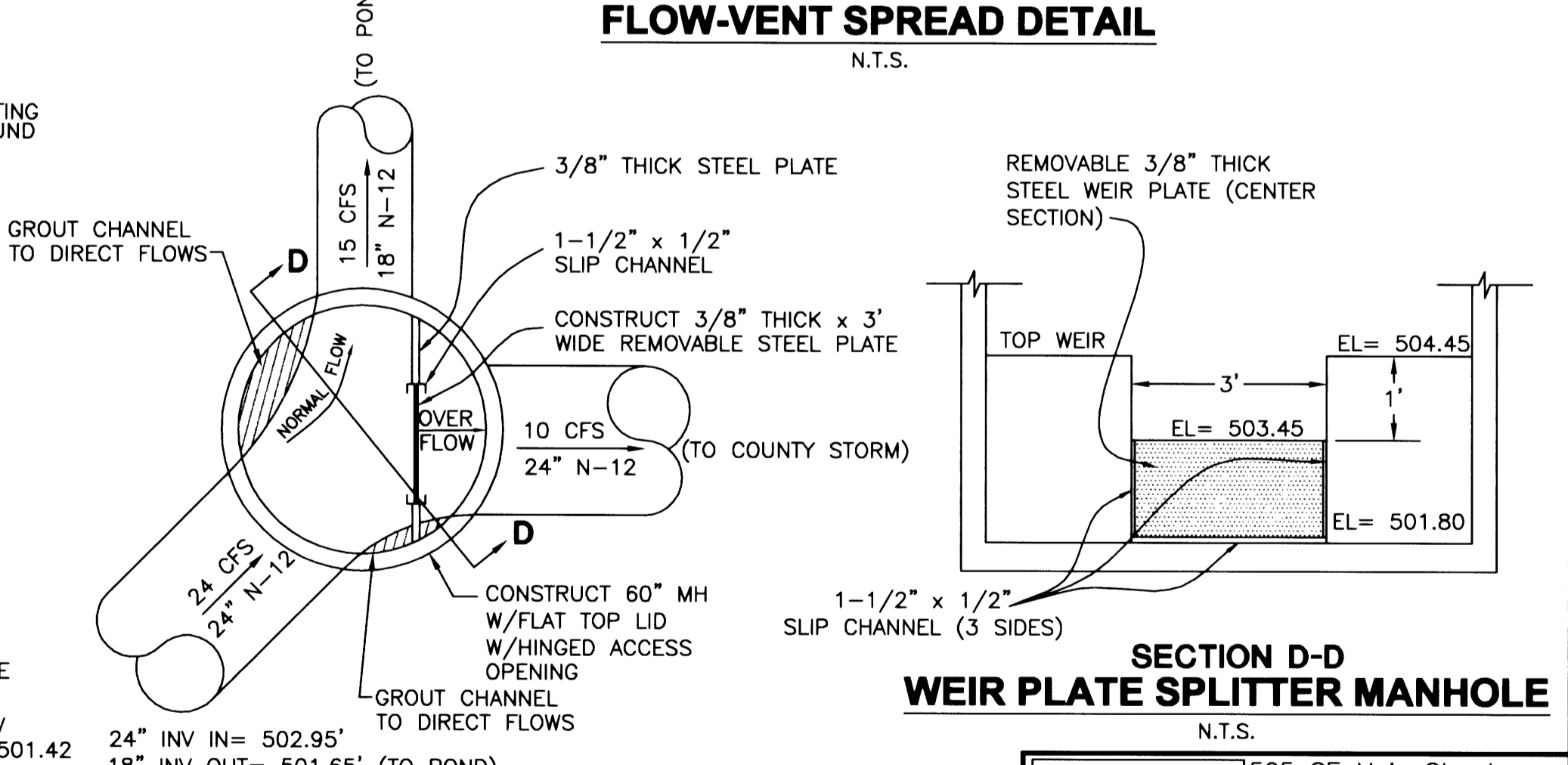
**SECTION C-C**  
N.T.S.



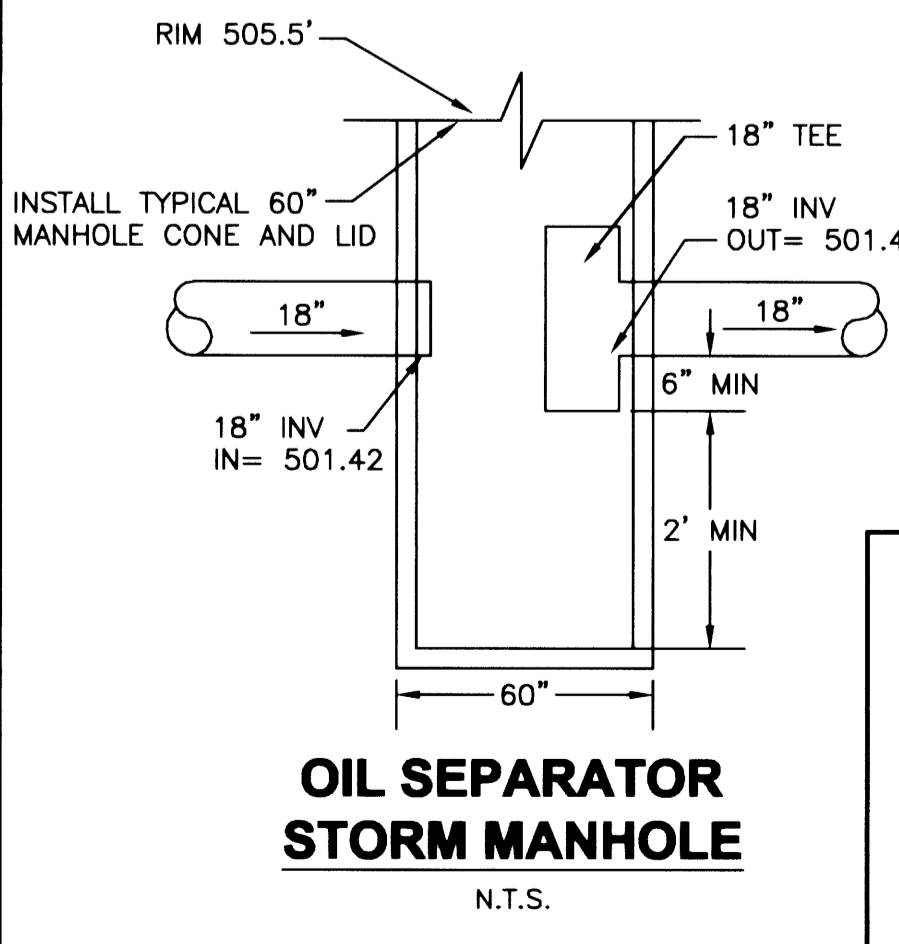
**SECTION C-C FLOW-VENT SPREADER DETAIL**  
N.T.S.



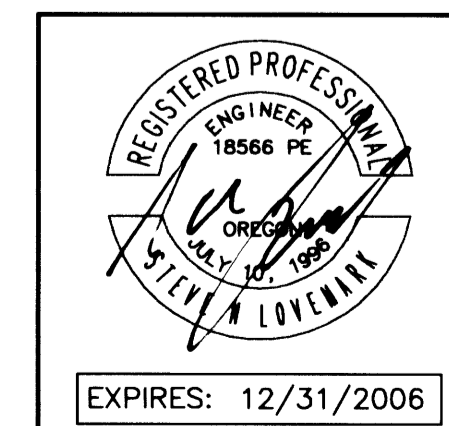
**4" DIA. PERF DRAIN**  
N.T.S.



**SECTION D-D WEIR PLATE SPLITTER MANHOLE**  
N.T.S.



**OIL SEPARATOR STORM MANHOLE**  
N.T.S.



Rev.	Date	Dwg	Description
1	7/1/05	JDL	AGENCY REVIEW
2	4/13/06	JDL	AS-BUILT PHASE 1A
3	8/9/06	NRJ	AS-BUILT PHASE 1B

EXPIRES: 12/31/2006

**i.e. ENGINEERING**  
505 SE Main Street  
Roseburg, Oregon 97470  
PHONE (541) 673-0166  
FAX (541) 440-9392  
jemail@ieengineering.com  
Project Name:

**RIVER CREST ESTATES 2 PHASE 1**  
Title:  
**DETENTION POND**  
DES DMA PROJECT NO. 1944-03t2  
DWG JDL DATE: MAY 20, 2005  
CHK SNL SCALE: AS SHOWN  
APP SNL SHEET: 5 OF 18

Co. Rd. # 288 B

**DETENTION POND**

288BPOND

DO NOT DUPLICATE