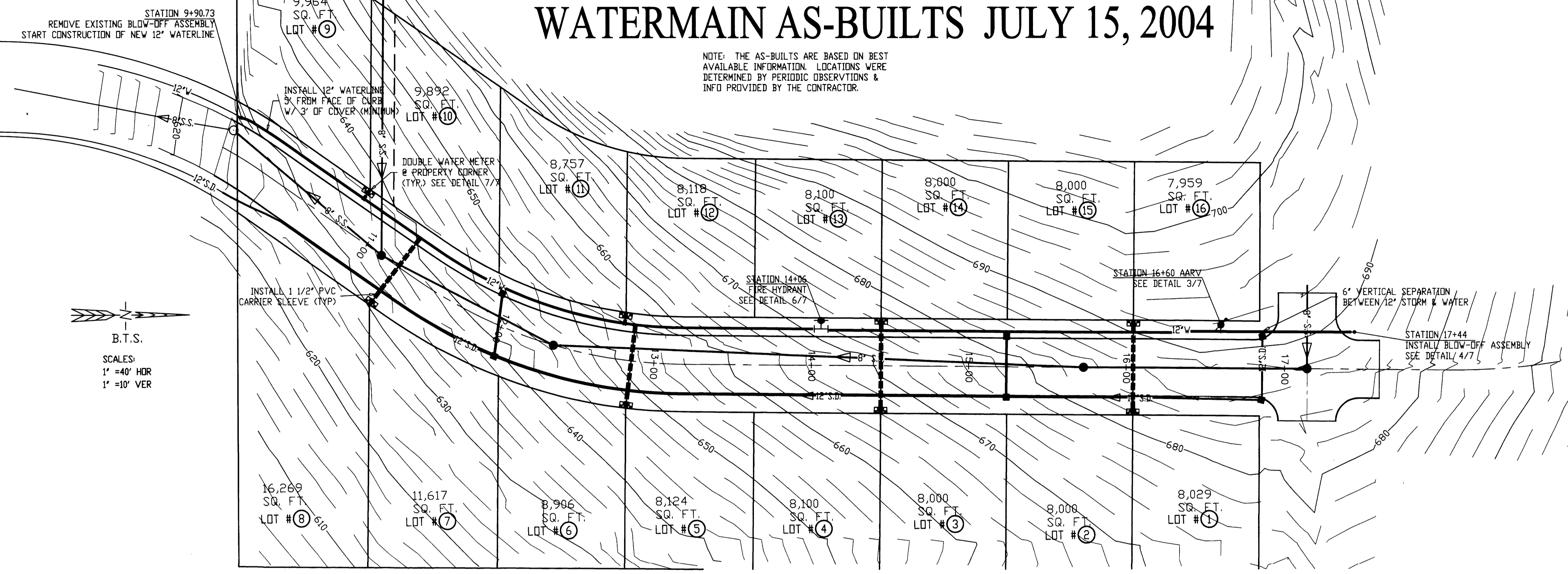


FILED  
 Date: 2-4-2005 By: JC  
 This survey consists of:  
 Meridian:  
 Name:  
 Corner F.pt:  
 DOUGLAS COUNTY  
 SURVEYOR

# WATERMAIN AS-BUILTS JULY 15, 2004

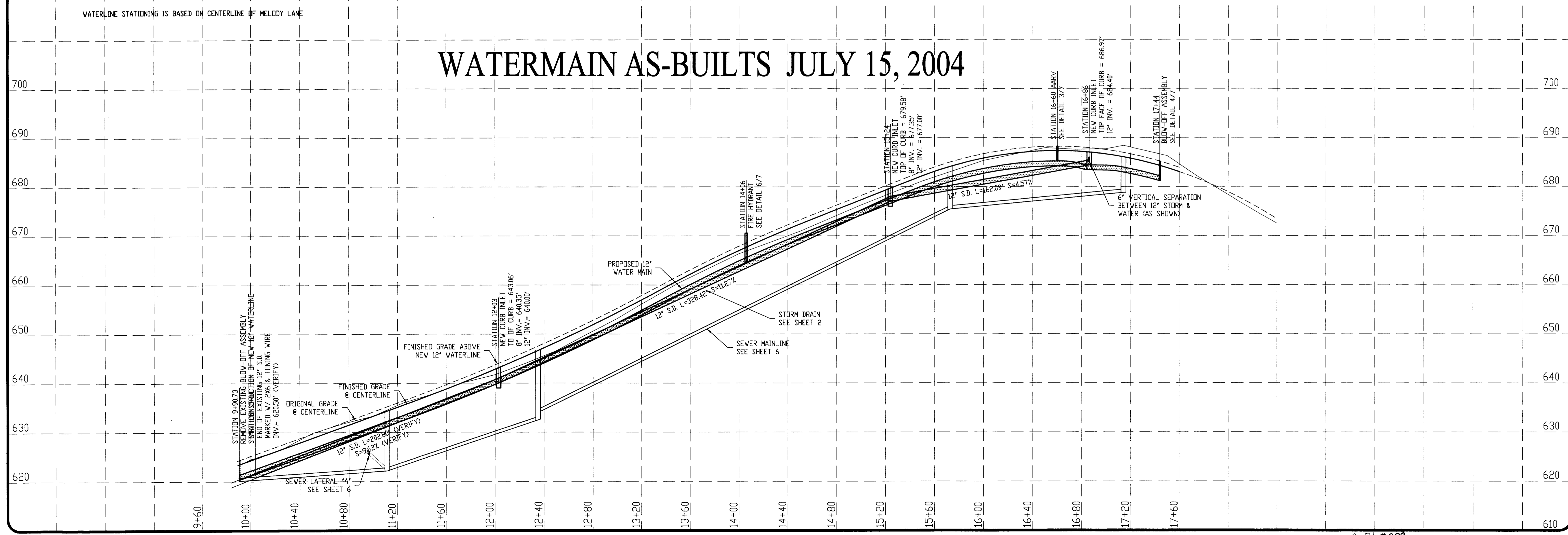
NOTE: THE AS-BUILTS ARE BASED ON BEST AVAILABLE INFORMATION. LOCATIONS WERE DETERMINED BY PERIODIC OBSERVATIONS & INFO PROVIDED BY THE CONTRACTOR.



- NOTES:
1. WATER METERS ARE SHOWN FOR LOCATION ONLY. WATER METERS, METER STOPS, SERVICE LINES, CORPORATION STOPS, AND SERVICE SADDLES INSTALLED BY ROBERTS CREEK WATER DISTRICT. CONTRACTOR TO INSTALL 1 1/2" PVC CARRIER PIPE FOR SERVICE LINE CROSSINGS AS SHOWN.
  2. LOTS 13, 14, 15, & 16 WILL HAVE LESS THAN THE NORMAL PRESSURE REQUIRED BY ROBERTS CREEK WATER DISTRICT FOR SERVICE.
  3. LOTS 15 & 16 ARE REQUIRED TO BE SINGLE STORY CONSTRUCTION.
  4. THE MAXIMUM HEIGHT OF ANY WATER FIXTURE IN THIS SUBDIVISION SHALL BE 705'.
  5. FUTURE LOTS WITH WATER FIXTURES ABOVE 686' WILL BE SERVED BY A BOOSTER STATION. (SEE TITLE SHEET FOR PROPOSED BOOSTER STATION LOCATION)

B.T.S.  
 SCALES:  
 1" = 40' HOR  
 1" = 10' VER

# WATERMAIN AS-BUILTS JULY 15, 2004



PROJECT: **MELODY SUBDIVISION - PHASE I**  
 SHEET TITLE: **WATER MAIN PLAN & PROFILE**

DATE: DECEMBER, 2001  
 REV. #1: 2/07/2002  
 REV. #2: 4/01/2002  
 REV. #3: 6/05/02  
 REV. #4:  
 REV. #5:



PROJ. #98-088  
 SHEET NO.

5 of 8