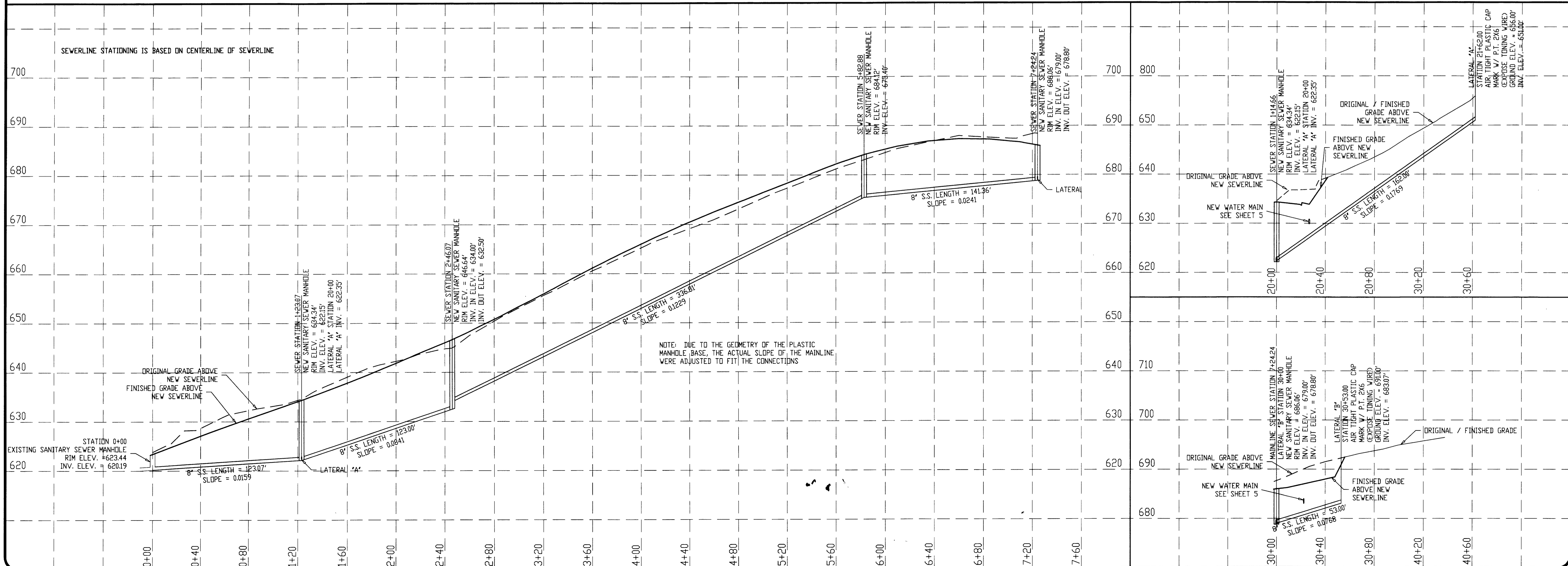
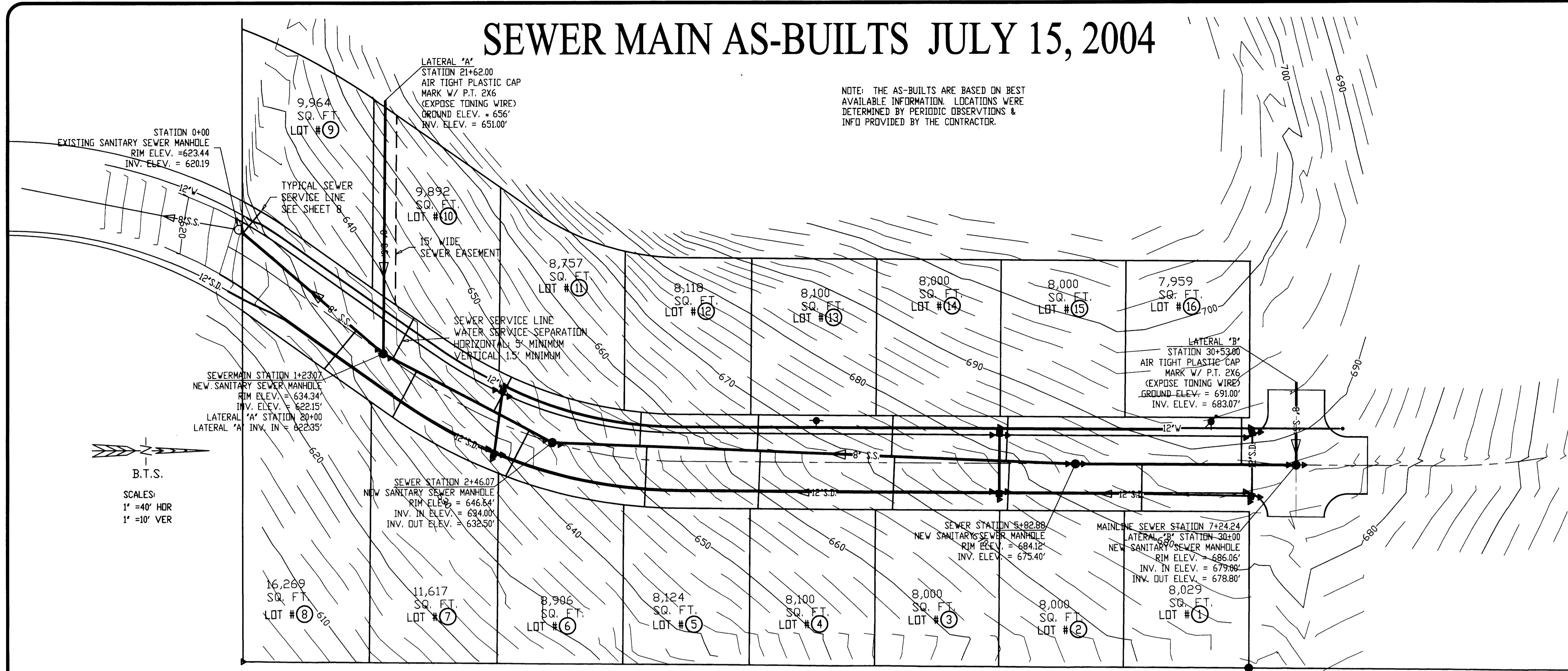


SEWER MAIN AS-BUILTS JULY 15, 2004

NOTE: THE AS-BUILTS ARE BASED ON BEST AVAILABLE INFORMATION. LOCATIONS WERE DETERMINED BY PERIODIC OBSERVATIONS & INFO PROVIDED BY THE CONTRACTOR.

FILED
 Date: 2-9-2006 By: DC
 This survey consists of:
 Map:
 Name:
 Corner Rpt:
 DOUGLAS COUNTY
 SURVEYOR



MELODY SUBDIVISION - PHASE I

SEWERLINE PLAN & PROFILES

PROJECT: MELODY SUBDIVISION - PHASE I
 SHEET TITLE: SEWERLINE PLAN & PROFILES

DATE: DECEMBER, 2001
 REV. #1: 2/07/2002
 REV. #2: 4/01/2002
 REV. #3: 6/05/02
 REV. #4:
 REV. #5:

REGISTERED PROFESSIONAL ENGINEER
 No. 15,214
 OREGON
 DAVID G. PHILLIPS
 EXPIRATION DATE: 12/31/02

PROJ. #98-088
 SHEET NO. 6 of 8

OWNER: ERIK HELLENTHAL

BTS ENGINEERING & SURVEYING, INC.
 401 S.E. MAIN ST., ROSELAND, OR 97068
 PHONE (503) 935-0966 FAX (503) 675-5016

R288SEWR