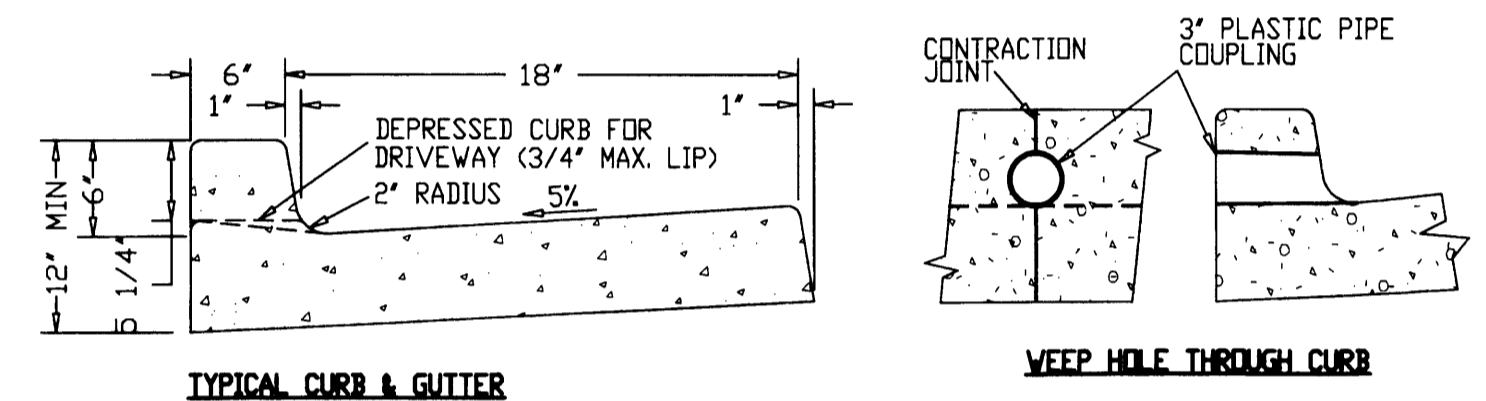


1
4 TYPICAL STREET CROSS SECTION
N.T.S.

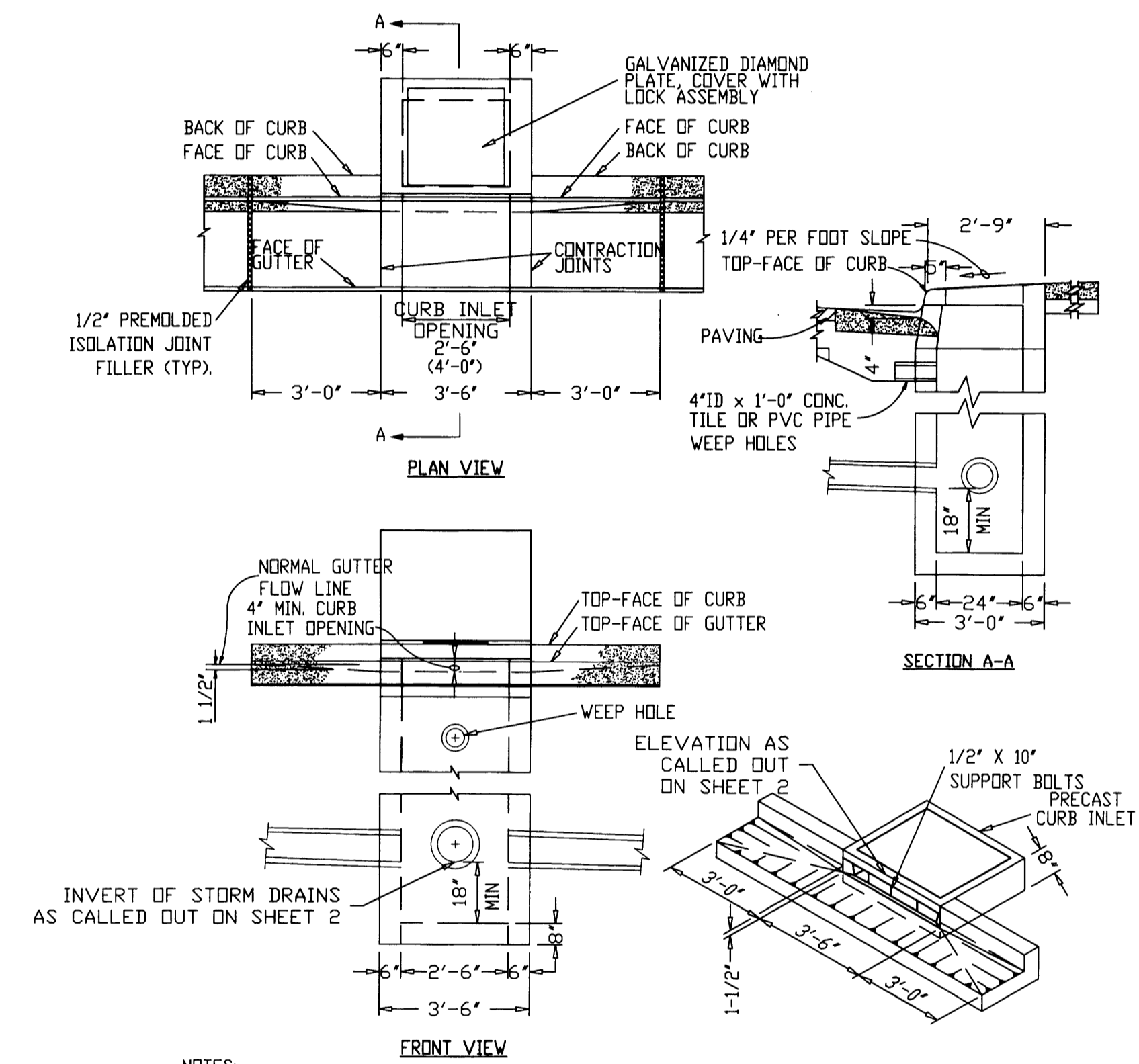
MELODY SUBDIVISION AS-BUILTS JULY 21, 2004

NOTE: THE AS-BUILTS ARE BASED ON BEST AVAILABLE INFORMATION. LOCATIONS WERE DETERMINED BY PERIODIC OBSERVATIONS & INFO PROVIDED BY THE CONTRACTOR.



- NOTES:
1. ALL RADII SHALL BE 3/4" EXCEPT AS OTHERWISE SHOWN.
 2. ISOLATION JOINTS SHALL BE PLACED ONLY AS SPECIFIED.
 3. CONTRACTION JOINTS SHALL BE PLACED AT 15' INTERVALS AND SHALL EXTEND AT LEAST 50% THROUGH THE CURB OR CURB AND GUTTER.
 4. A CONTRACTION JOINT SHALL BE PLACED ALONG AND OVER WEEP HOLE THROUGH THE CURB AND THROUGH THE SIDEWALK.
 5. WHEN SIDEWALKS ARE CONSTRUCTED, EXTEND 3" PIPE TO BACK OF SIDEWALK AND INSTALL COUPLING.
 6. LOCATE ONE WEEP HOLE PER LOT, AT LOWEST LOT FRONTAGE ELEVATION.

2
4 CURB AND GUTTER, CURB, AND WEEP HOLE
TYPICAL CURB & GUTTER DETAIL
N.T.S.



- NOTES:
1. CURB INLET TOP AND BASE SHALL MEET H20 LOADING
 2. CONCRETE STRENGTH SHALL BE 3000 PSI.
 3. ALL FABRICATED METAL PARTS SHALL BE HOT-DIPPED GALVANIZED AFTER FABRICATION.
 4. FOR STEEP GRADES USE STD. PRECAST INLET WITH 4'-0" OPENING OR TWO 2'-6" OPENING INLETS.
 5. CURB INLET BASE MAY BE PRECAST OR CAST-IN-PLACE.

3
4 CURB INLET DETAIL
N.T.S.

FILED
Date: 7-9-2005 By: DC
This survey consists of:
Map:
Corner Rpt:
DOUGLAS COUNTY SURVEYOR

OWNER: ERIK HELLENTHAL

PROJECT: MELODY SUBDIVISION - PHASE I

SHEET TITLE: MELODY LN. CROSS SECTIONS & STREET DETAILS

DATE: DECEMBER, 2001

REV. #1: 2/7/2002
REV. #2: 4/01/2002
REV. #3: 6/05/02
REV. #4: -
REV. #5: -

REGISTERED PROFESSIONAL ENGINEER
10235
OREGON
DAVID G. PHILIPPI
EXPIRATION DATE: 12/31/02

PROJ. #98-088
SHEET NO. 4 of 8

CO. RD. #288

R288DET1