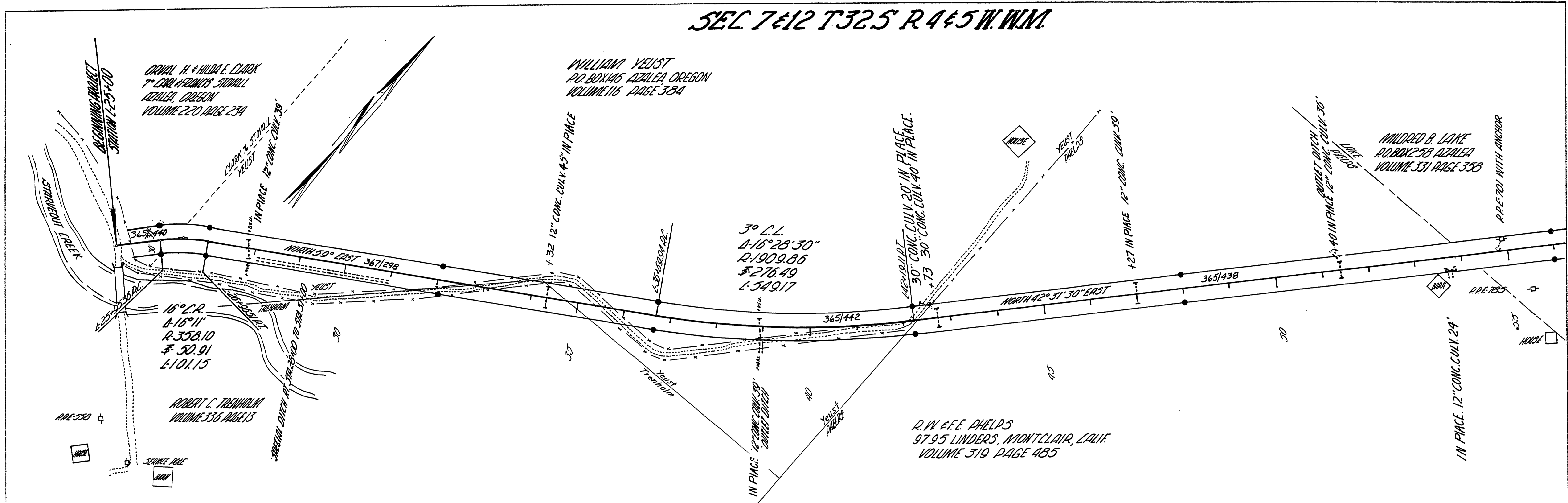


SEC 7&12 T325 R4&5 W.W.M.

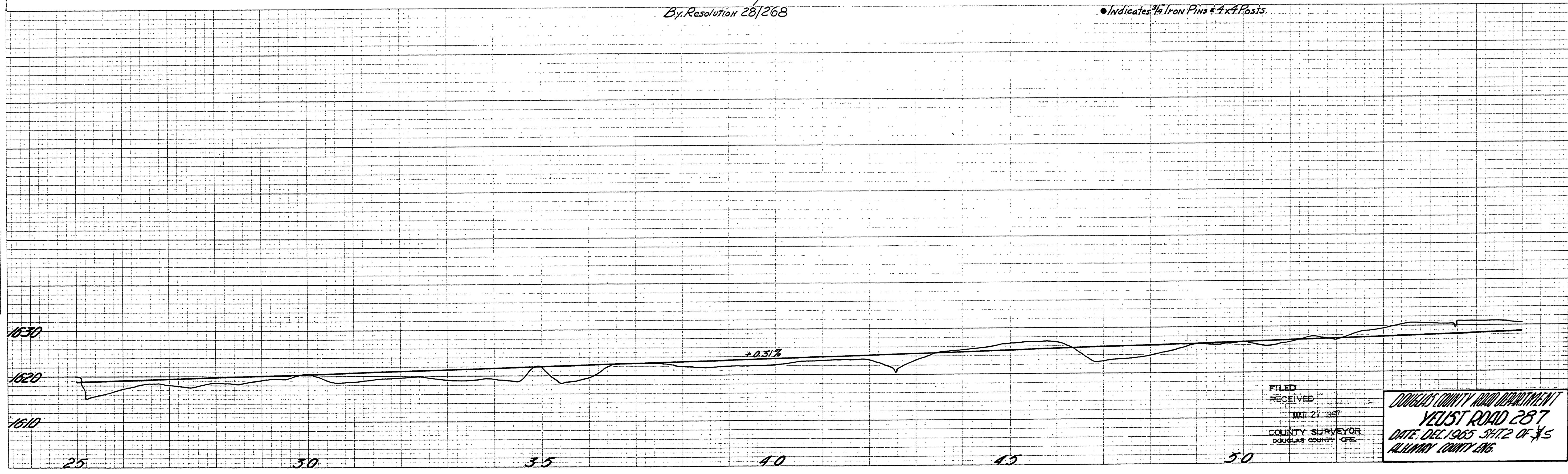
DATE	BY
DATE	BY
DATE	BY
DATE	BY
DATE	BY

DATE	BY
DATE	BY
DATE	BY
DATE	BY
DATE	BY



By Resolution 28/268

● Indicates 3/4" Iron Pins & 4"x4" Posts



FILED  
RECEIVED  
MAR 27 1967  
COUNTY SURVEYOR  
DOUGLAS COUNTY, ORE.

DOUGLAS COUNTY ROAD DEPARTMENT  
YEJST ROAD 287  
DATE: DEC. 1965 SH: 2 OF 4 S  
ALLIANCE COUNTY ENG.