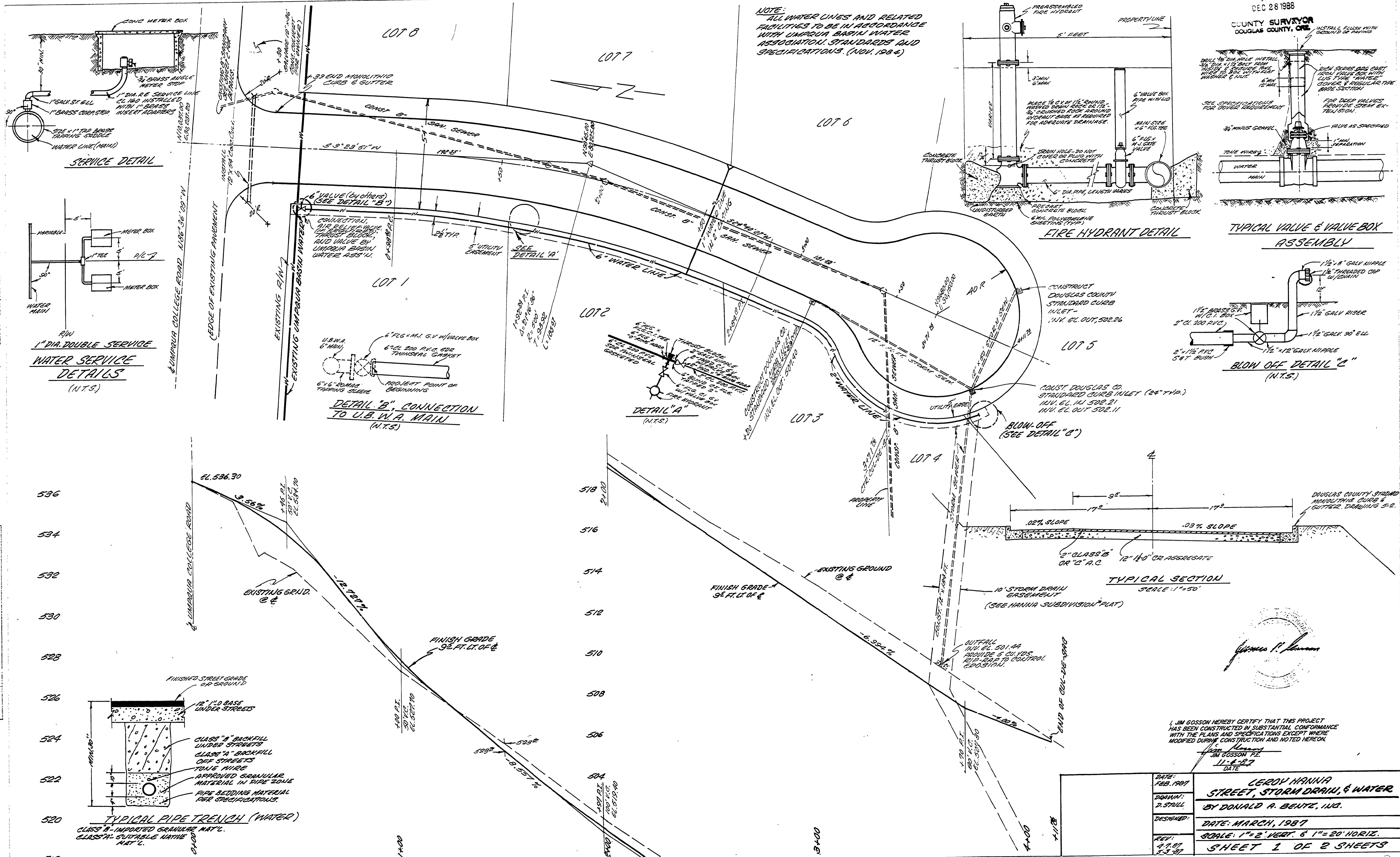
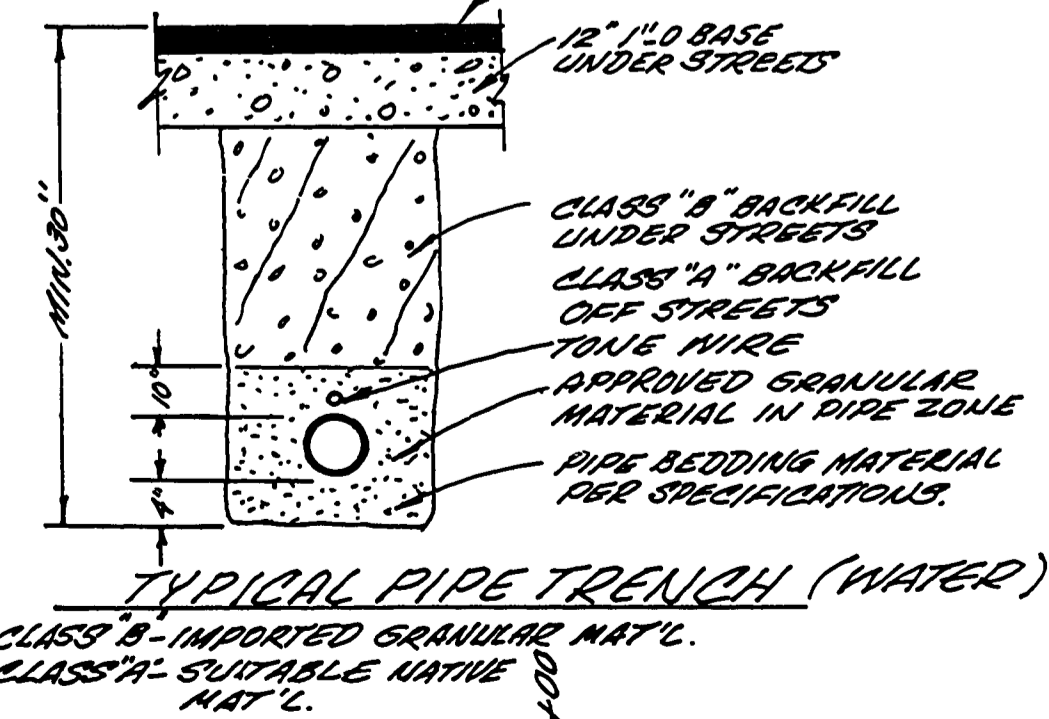
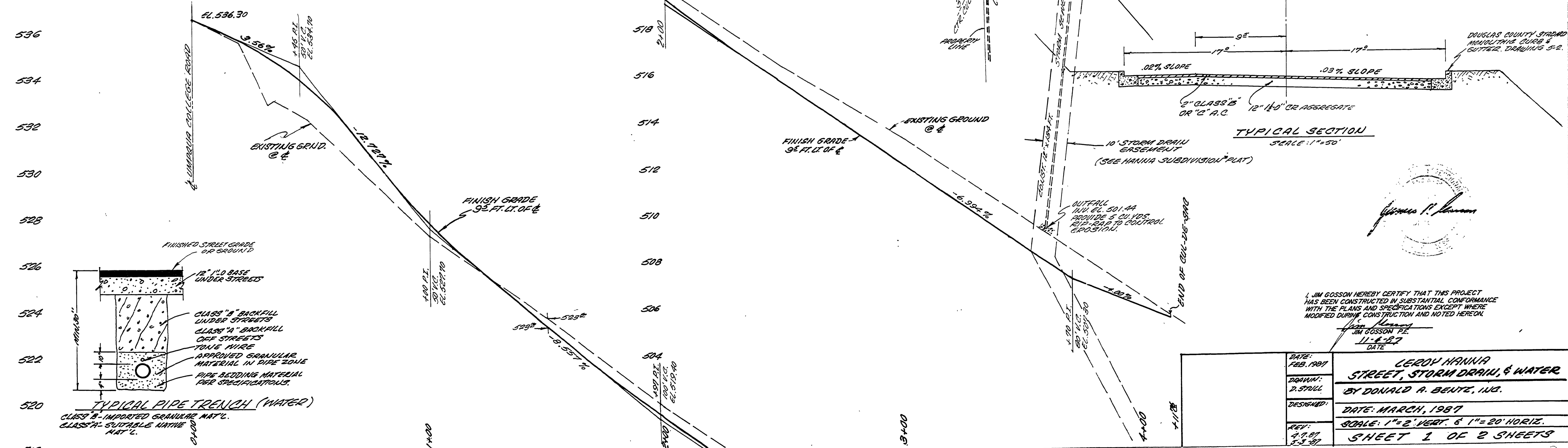
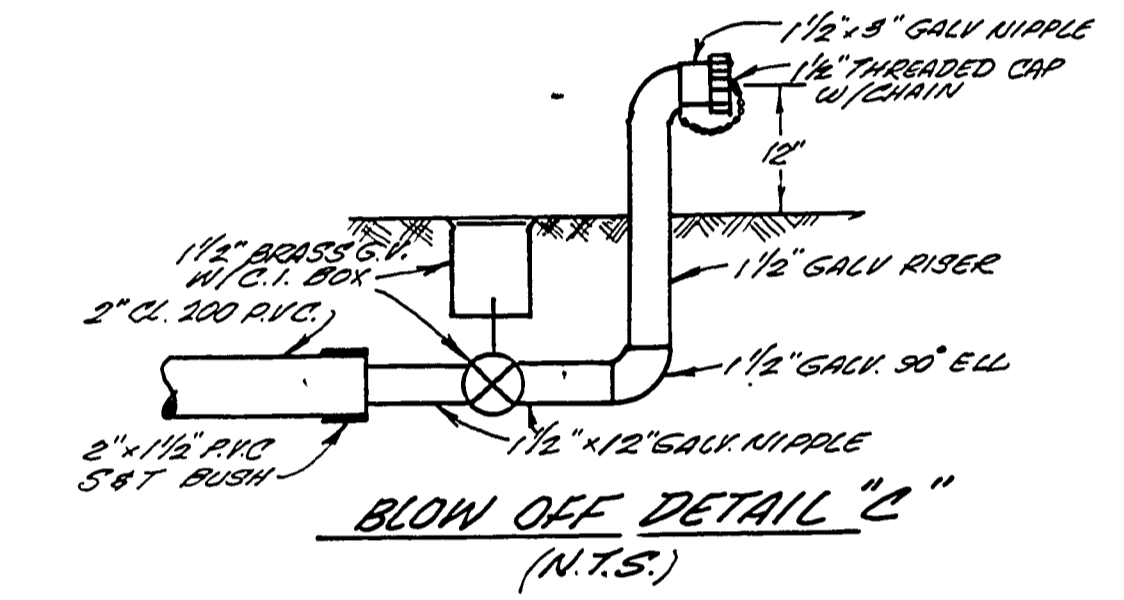
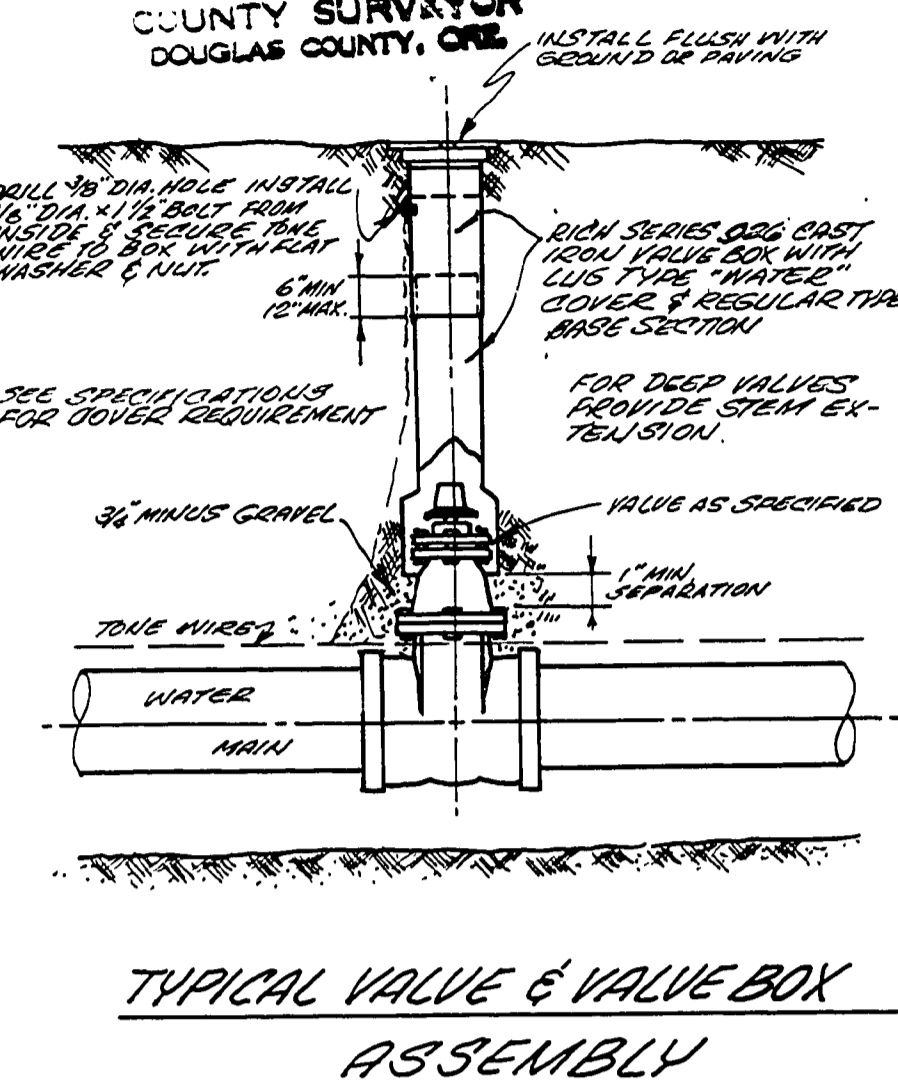
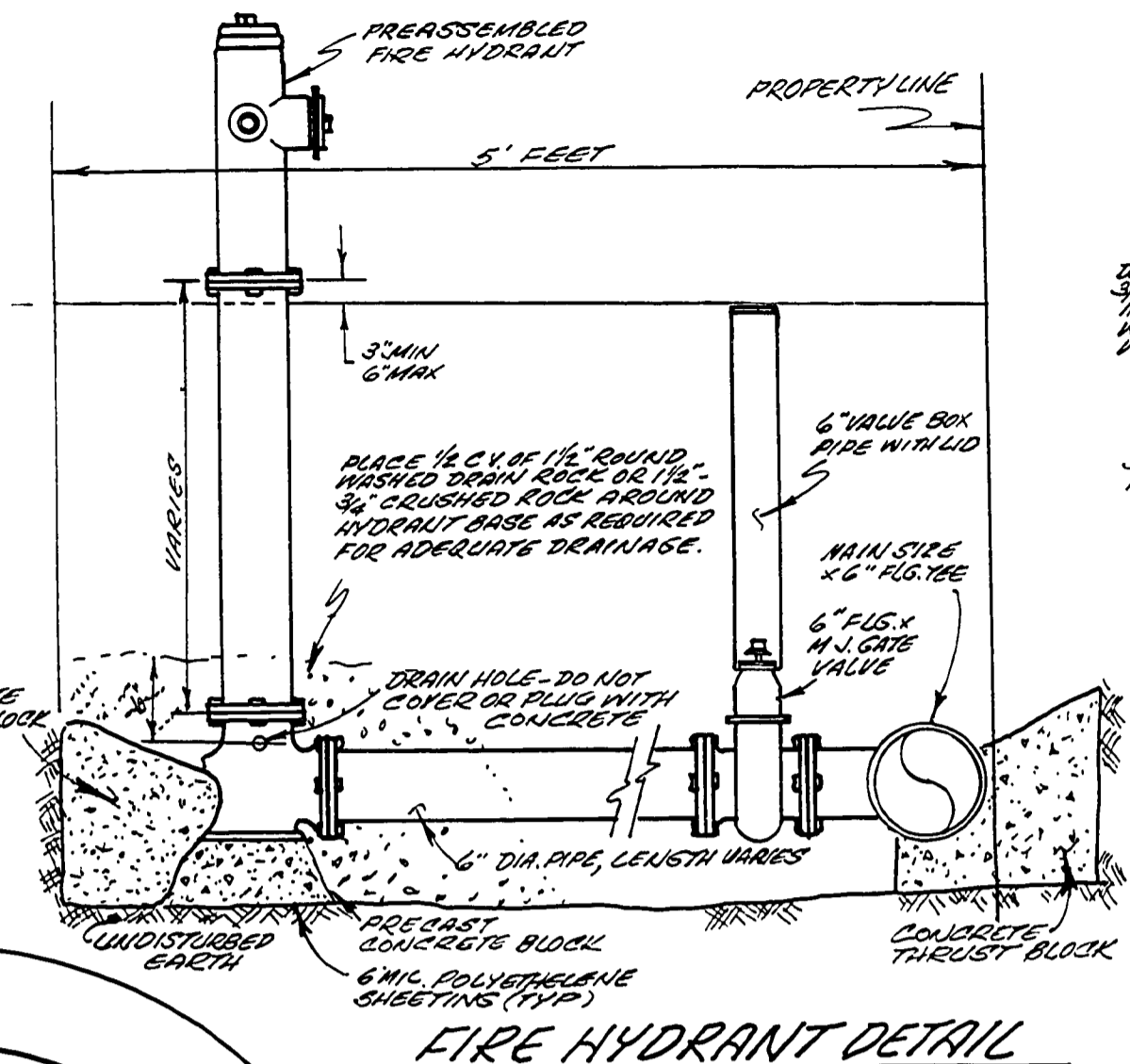
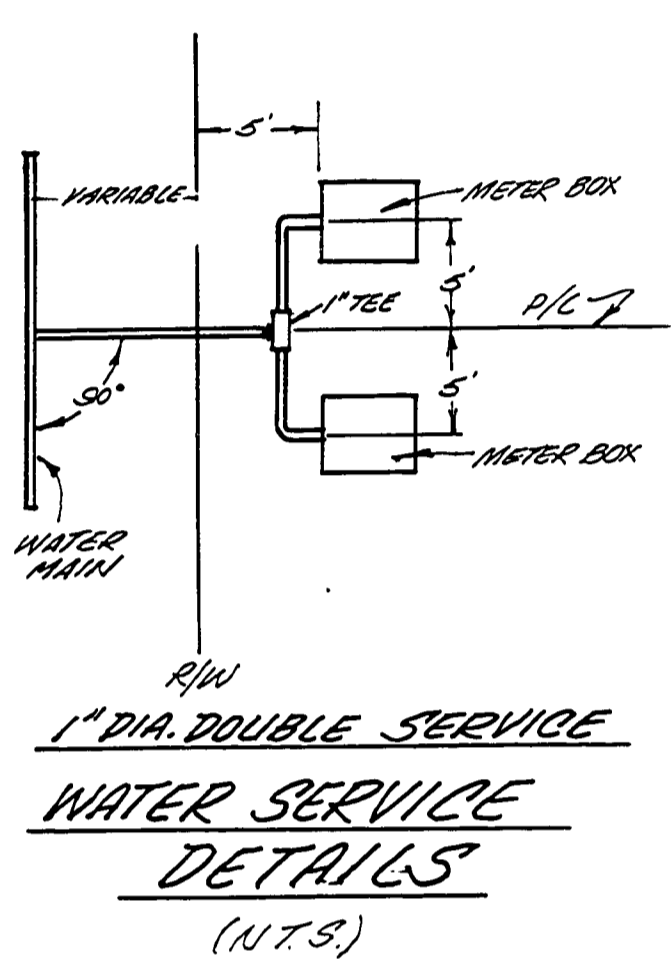


FILED
DEC 28 1988
COUNTY SURVEYOR
DOUGLAS COUNTY, ORE

NOTE:
ALL WATER LINES AND RELATED
FACILITIES TO BE IN ACCORDANCE
WITH UMAPUA BASIN WATER
ASSOCIATION STANDARDS AND
SPECIALIZATIONS. (NOV. 1984)



SERVICE DETAIL



I, JIM GOSSON HEREBY CERTIFY THAT THIS PROJECT
HAS BEEN CONSTRUCTED IN SUBSTANTIAL CONFORMANCE
WITH THE PLANS AND SPECIFICATIONS EXCEPT WHERE
MODIFIED DURING CONSTRUCTION AND NOTED HEREON.

DATE:	FEB. 1987	DESIGNED:	DATE: MARCH, 1987
DRAWN:	D. SPILL	SCALE:	1" = 2' VERT. & 1" = 20' HORIZ.
REV:	4.7.87	SHEET:	1 OF 2 SHEETS

FINAL SURVEY

ORIGINAL SURVEY

RD284A01