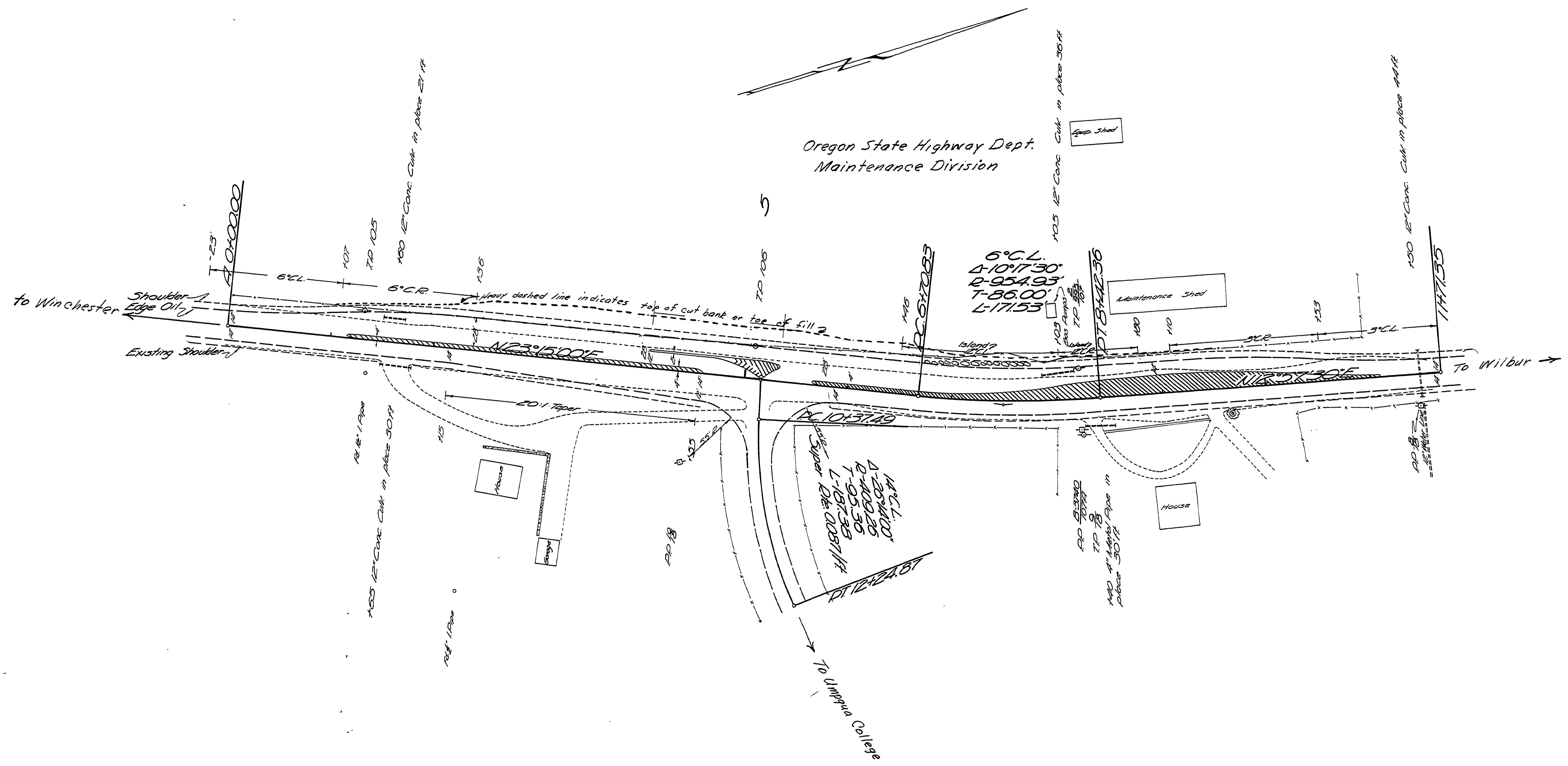


Oregon State Highway Dept.  
Maintenance Division



DOUGLAS COUNTY ROAD DEPT.  
UMQUA COLLEGE ROAD  
HWY 99 CHANNELIZATION  
DATE APR. 67 SHEET 1 OF 1  
GEORGE E. GRUBB COUNTY ENG.

M.P. 0.00 - 0.23

Co. Rd. # 284 Apr. '67 sht. 1 of 1

00000023