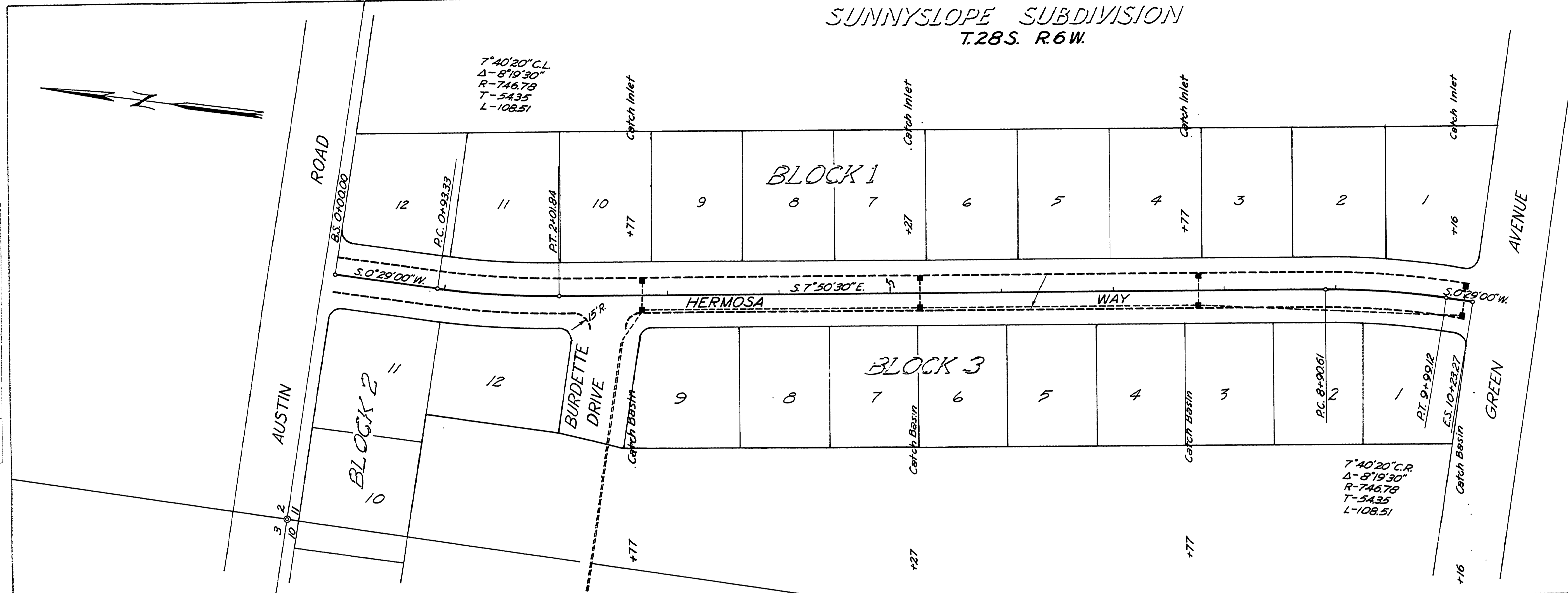
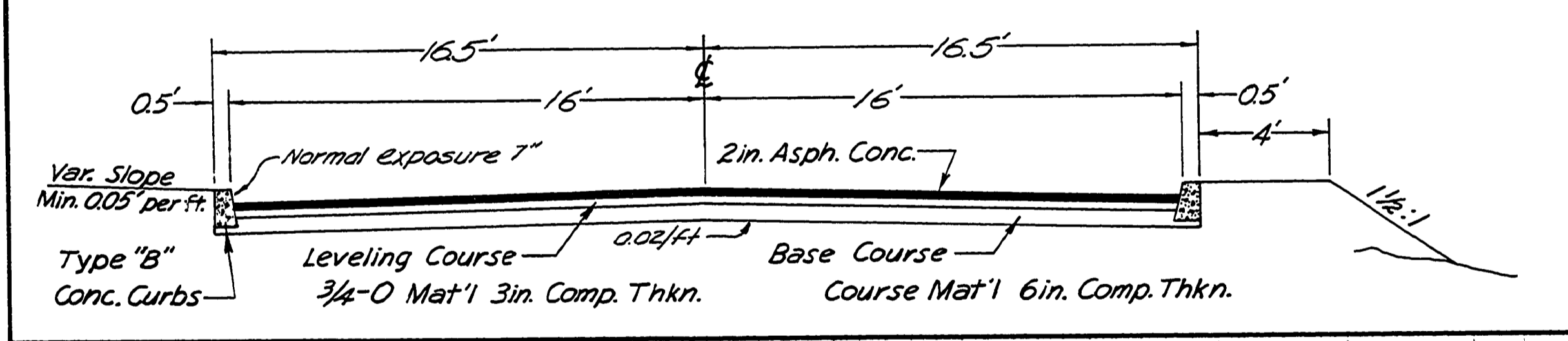


SUNNYSLOPE SUBDIVISION
T.28S. R.6W.

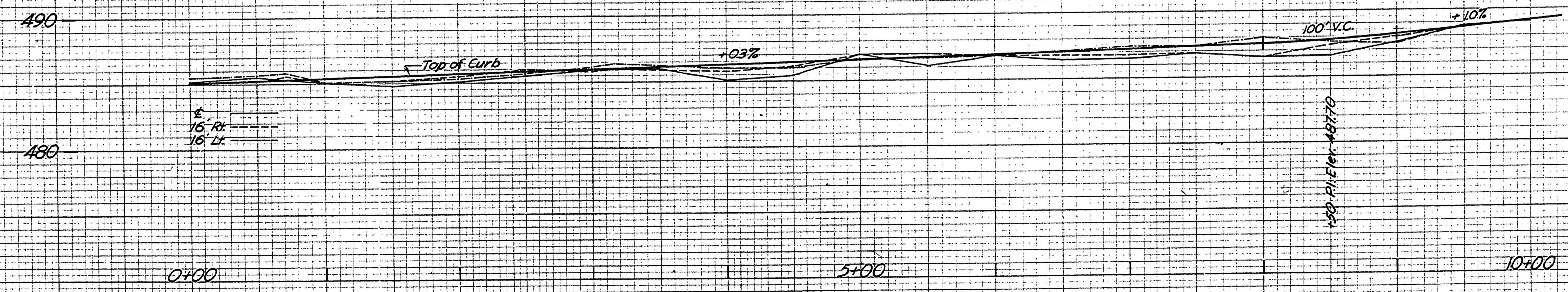


TYPICAL SECTION



HERMOSA WAY; DEDICATED IN SUNNYSLOPE SUBDIVISION AS SHOWN IN VOL. 12 PAGE 23 OF DOUGLAS COUNTY PLAT RECORDS
 ADOPTED BY RESOLUTION OF THE COUNTY COURT THIS 12TH DAY OF NOV 1964
 V.T. Jackson
 COUNTY JUDGE

COUNTY COMMISSIONER
 COUNTY COMMISSIONER



FILED
 RECEIVED
 DEC - 4 1964
 COUNTY SURVEYOR
 DOUGLAS COUNTY, ORE.

Douglas County Road Dept.
 HERMOSA WAY Co. Rd. #278
 Date 10-4-63 Sheet 1 of 1
 A.H. May County Engineer

DATE	
BY	
REVISIONS	
NO.	
DATE	
BY	
REVISIONS	
NO.	
DATE	
BY	
REVISIONS	
NO.	

DATE	
BY	
REVISIONS	
NO.	
DATE	
BY	
REVISIONS	
NO.	
DATE	
BY	
REVISIONS	
NO.	

00000020