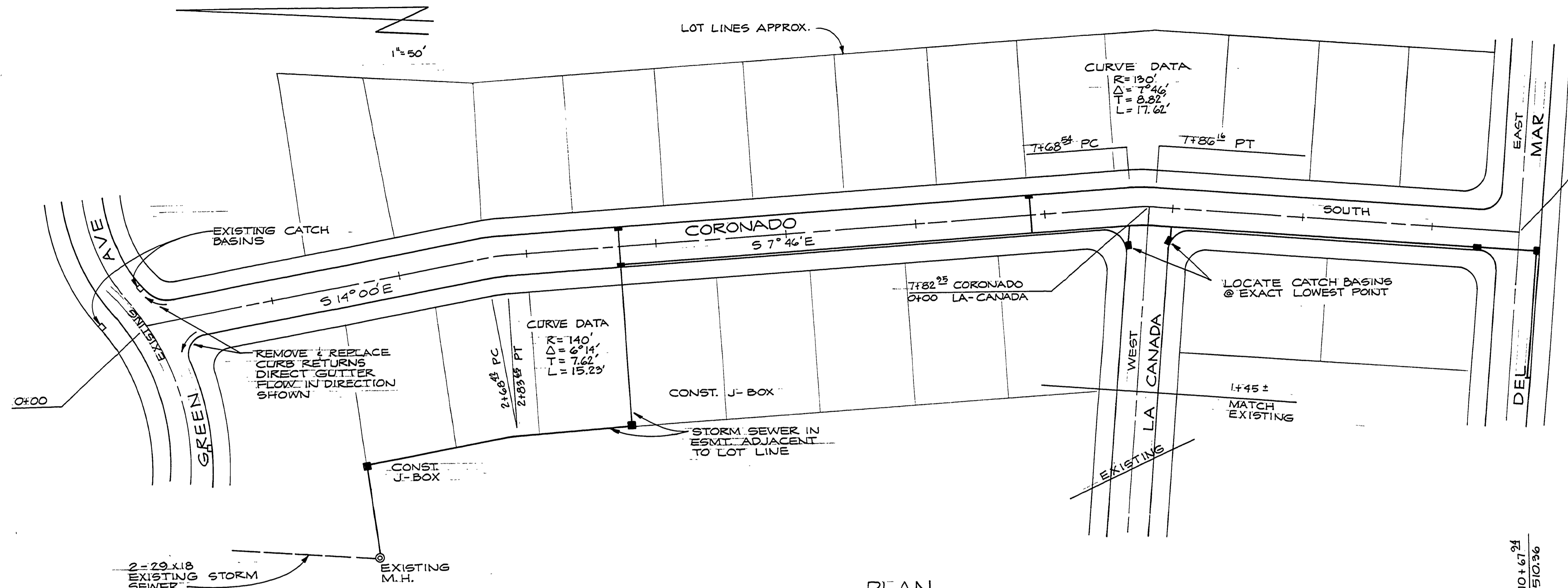
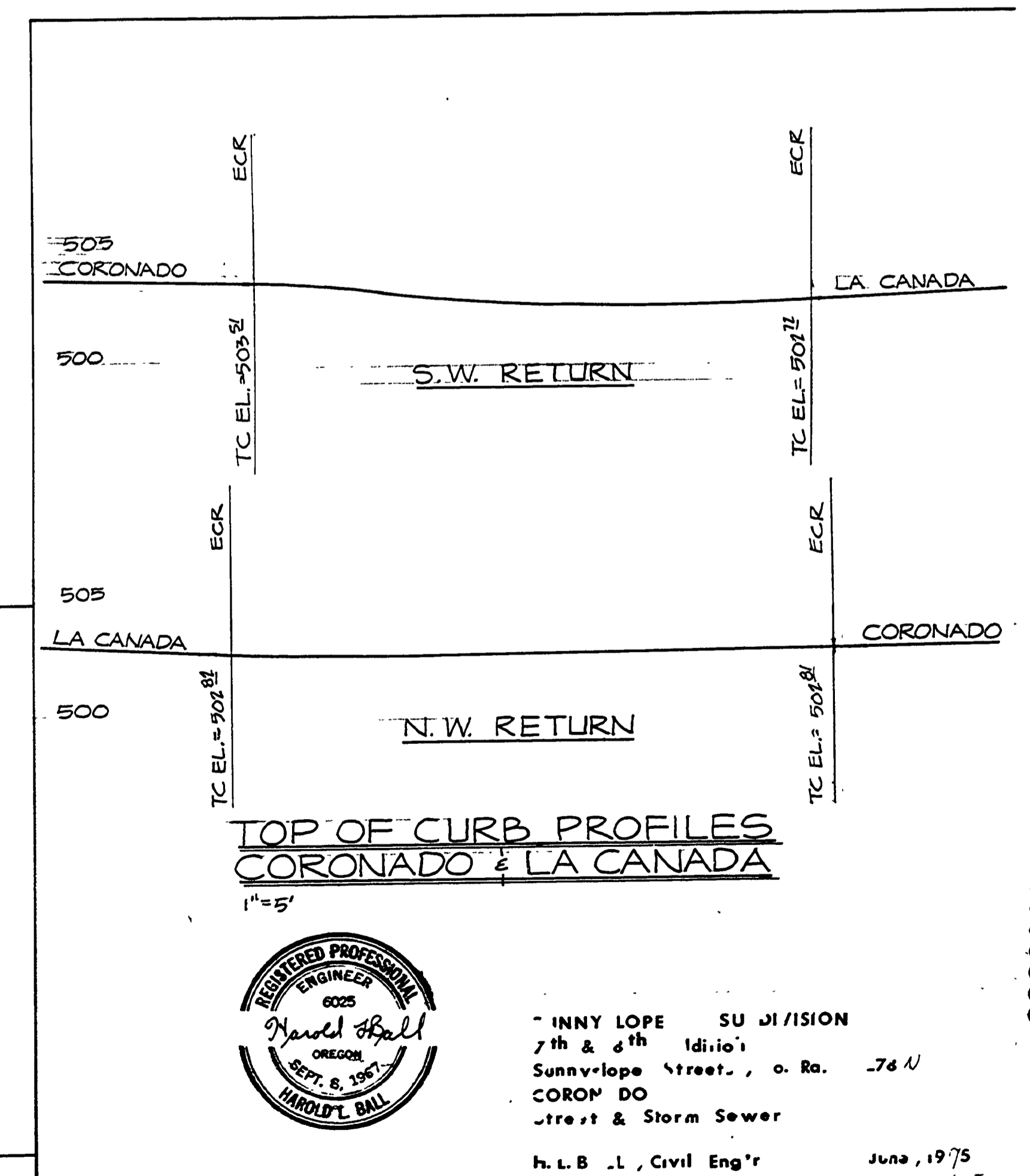
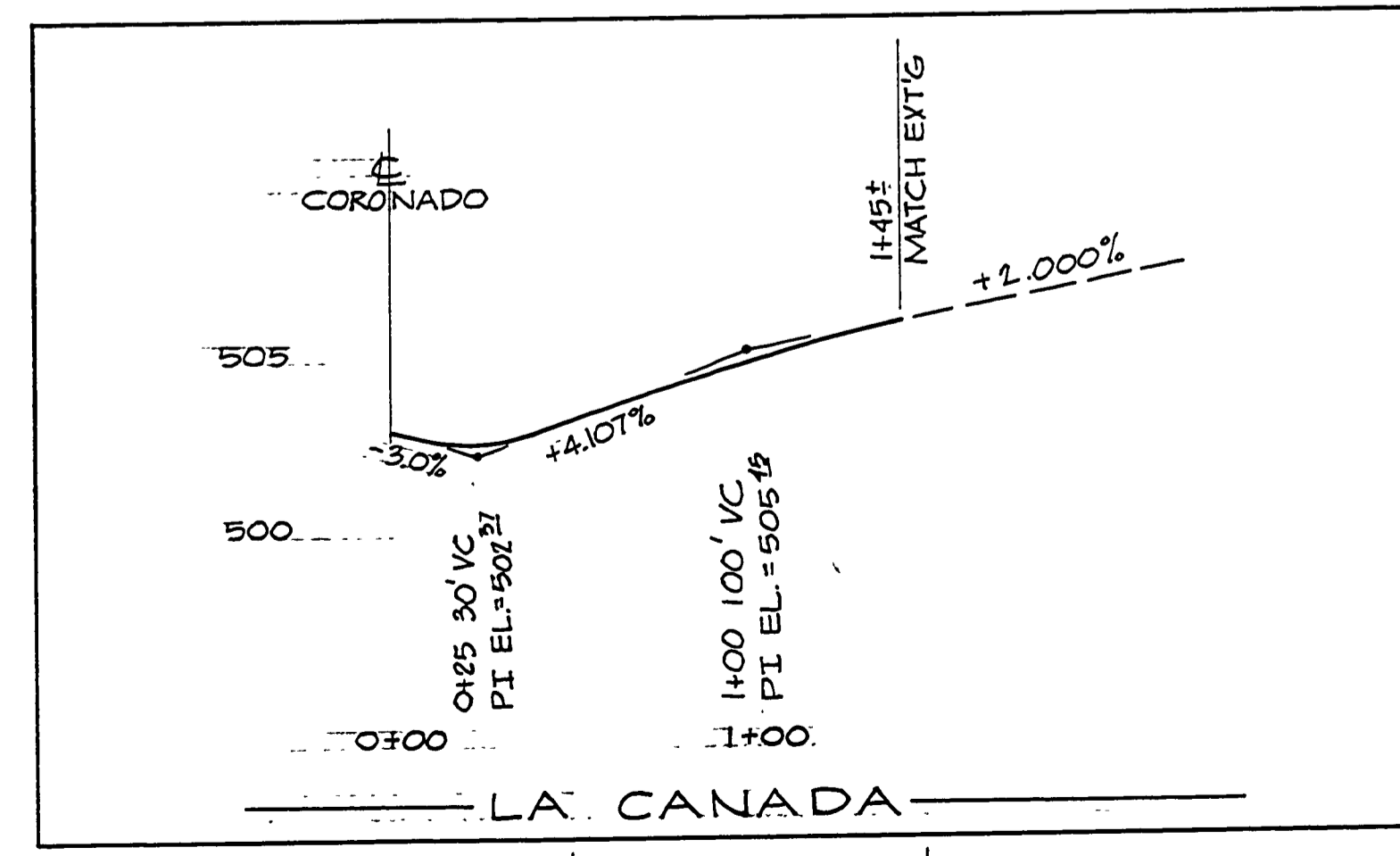
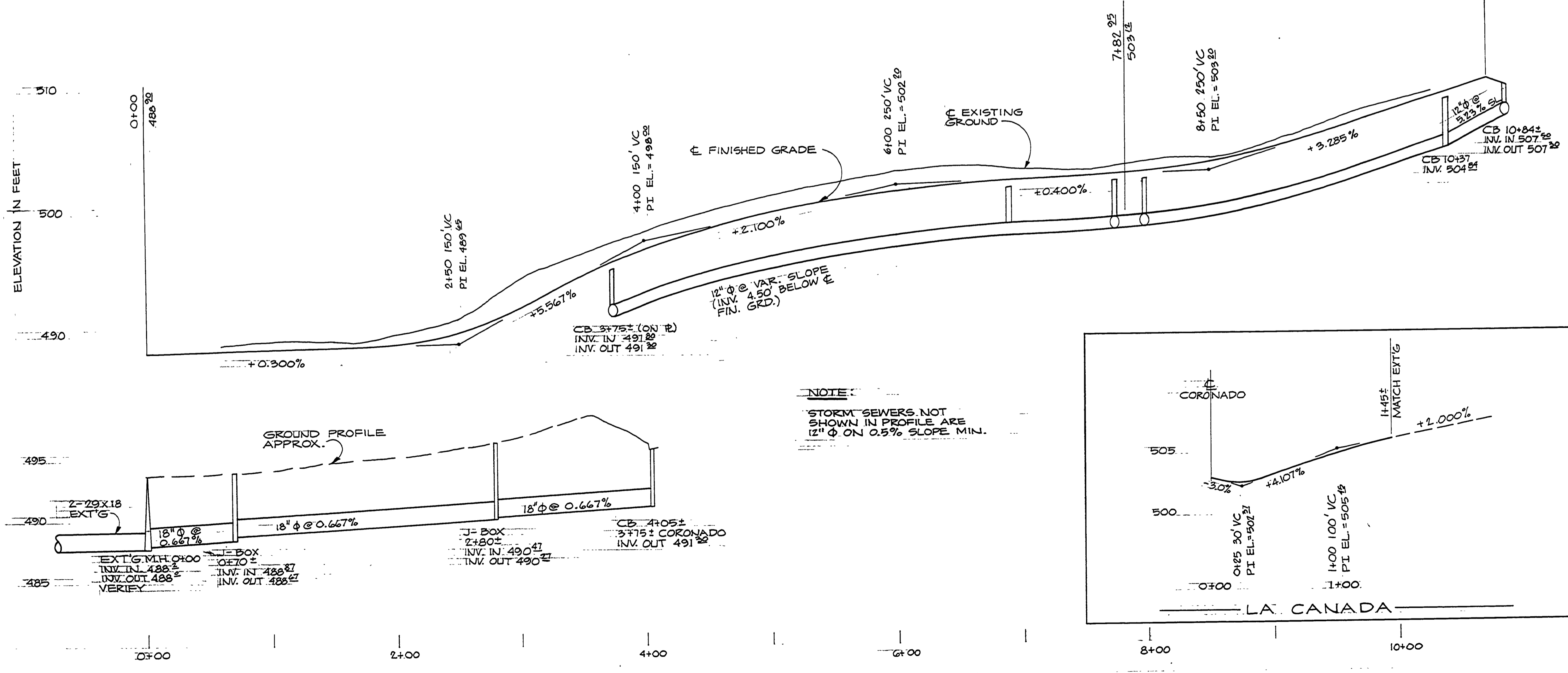


FILED  
RECEIVED  
AUG 26 1976  
COUNTY SURVEYOR  
DOUGLAS COUNTY, ORE.



NOTE:  
SEE PLAT BOOK 15 PAGE 28  
OF SEVENTH ADDITION TO  
SUNNYSLOPE, FOR RIGHT OF  
WAY INFORMATION.

PLAN



M.P. 0.00-0.20

Cad. # 278 N

JUNE, 1975

00000020

71