

FILED
RECEIVED

JUL 15 1975

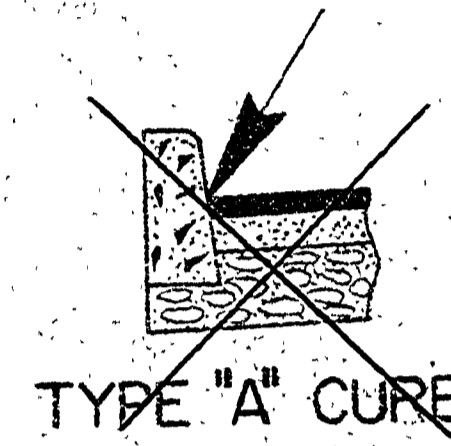
COUNTY SURVEYOR
DOUGLAS COUNTY, ORE.

W	R ₁	Δ ₁	L ₁	R ₂	Δ ₂	L ₂	S ₂	L ₂ '	X	AREA
35	35	45°34'20"	27.84	40	271°08'40"	20.94	15°34'20"	10.87	53.56	5,150
35	40	44°02'55"	30.75	40	268°05'50"	20.94	14°02'55"	9.81	55.62	5,220
41	35	42°16'07"	25.82	40	264°32'14"	20.94	12°16'07"	8.57	50.45	5,123
41	40	40°51'55"	28.53	40	261°43'50"	20.94	10°51'55"	7.59	52.34	5,207

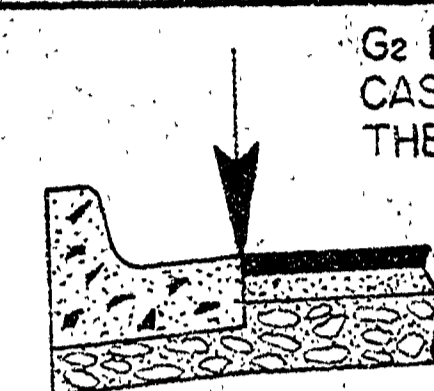
AREA FIGURES ARE FOR SHADED PORTION OF CUL-DE-SAC. (F1.2)

A	B	C	D	E	F	G	H	I	J	K	L	M	G ₁	G ₂
97.56	97.02	96.85	96.48	96.11	95.74	95.48	95.40	95.63	96.04	96.56	96.81	97.56	497.20	

G₂ EXISTS ONLY IN THE CASE OF A V.C. W/G₁ AS THE P.I.

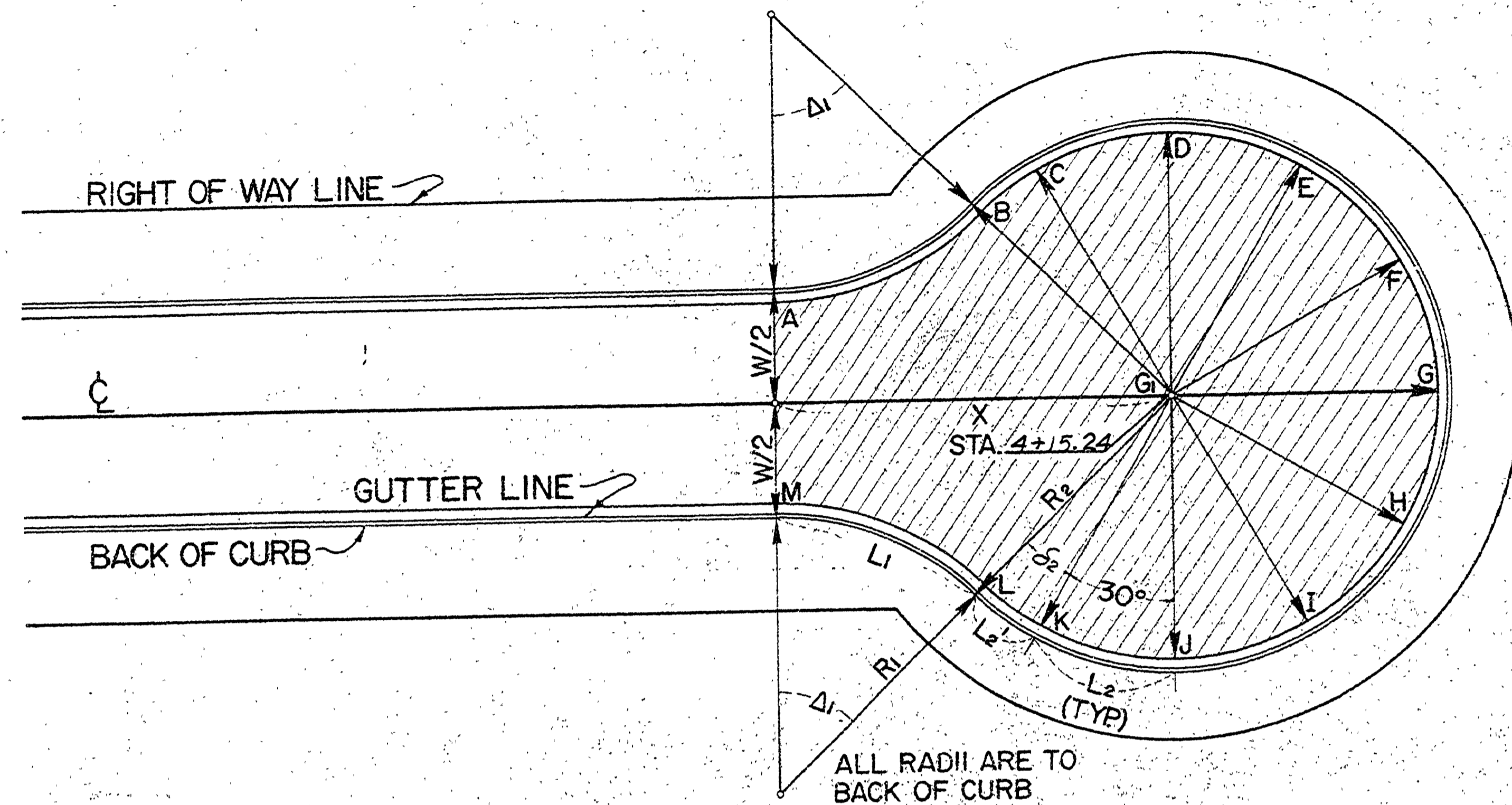


TYPE "A" CURB

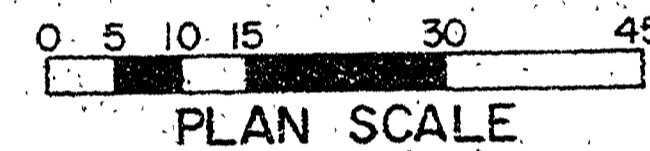


TYPE "B" CURB & GUTTER

ELEVATIONS LISTED CORRESPOND TO LOCATIONS SHOWN

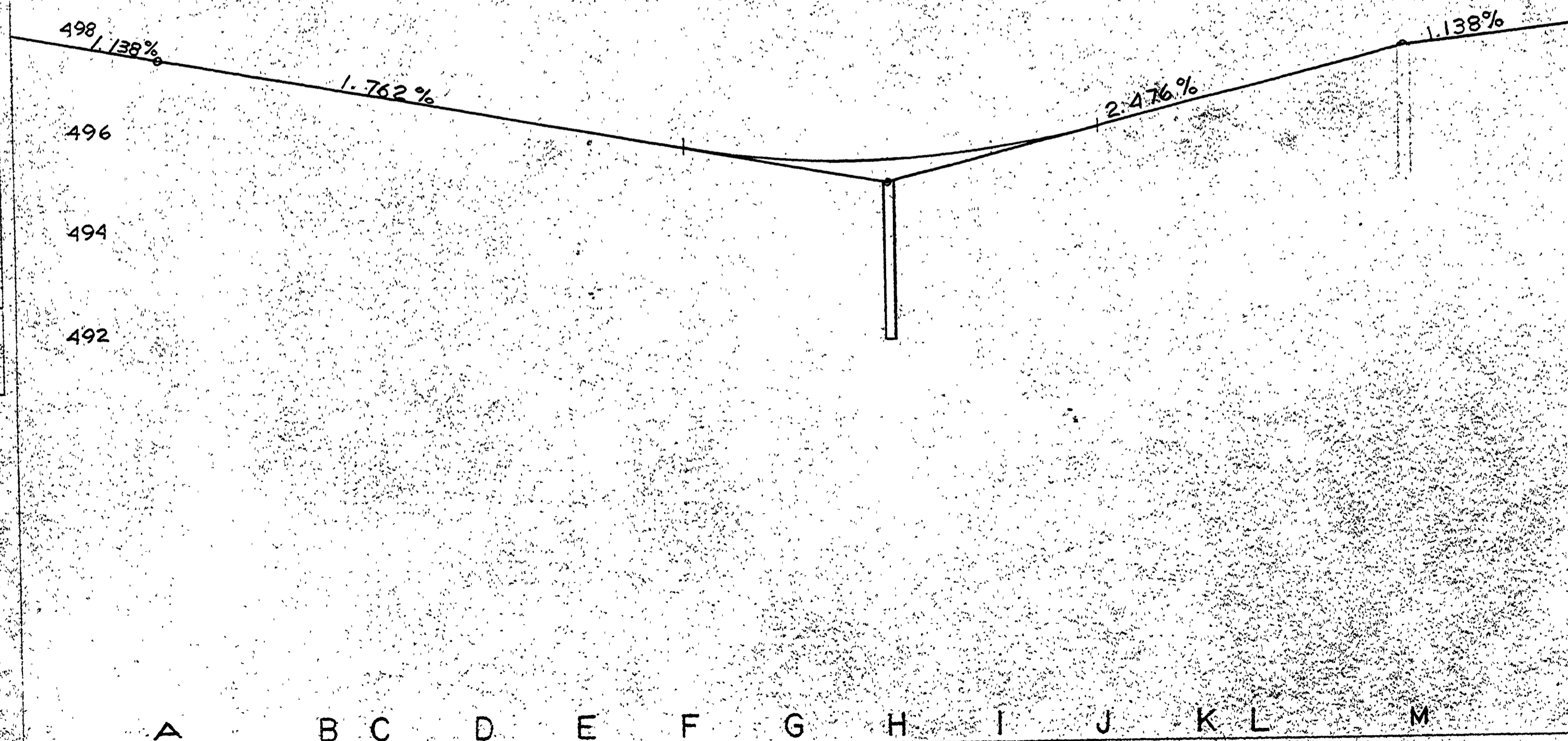


CUL-DE-SAC



PLAN
SUBMITTED
NOT CHECKED
NO. ...

PROFILE
SUBMITTED
NOT CHECKED
NO. ...



NOT REVISED
AS CONSTRUCTED

W=35 R=40 R₂=40
DESCRIPTION
PROJECT # 278 DATE 1972
DOUGLAS COUNTY RD. DEPT.
STANDARD CUL-DE-SAC LAYOUT
DATE 1972 STD. DWNG 15

DESIGNED EISENBARK
CHECKED