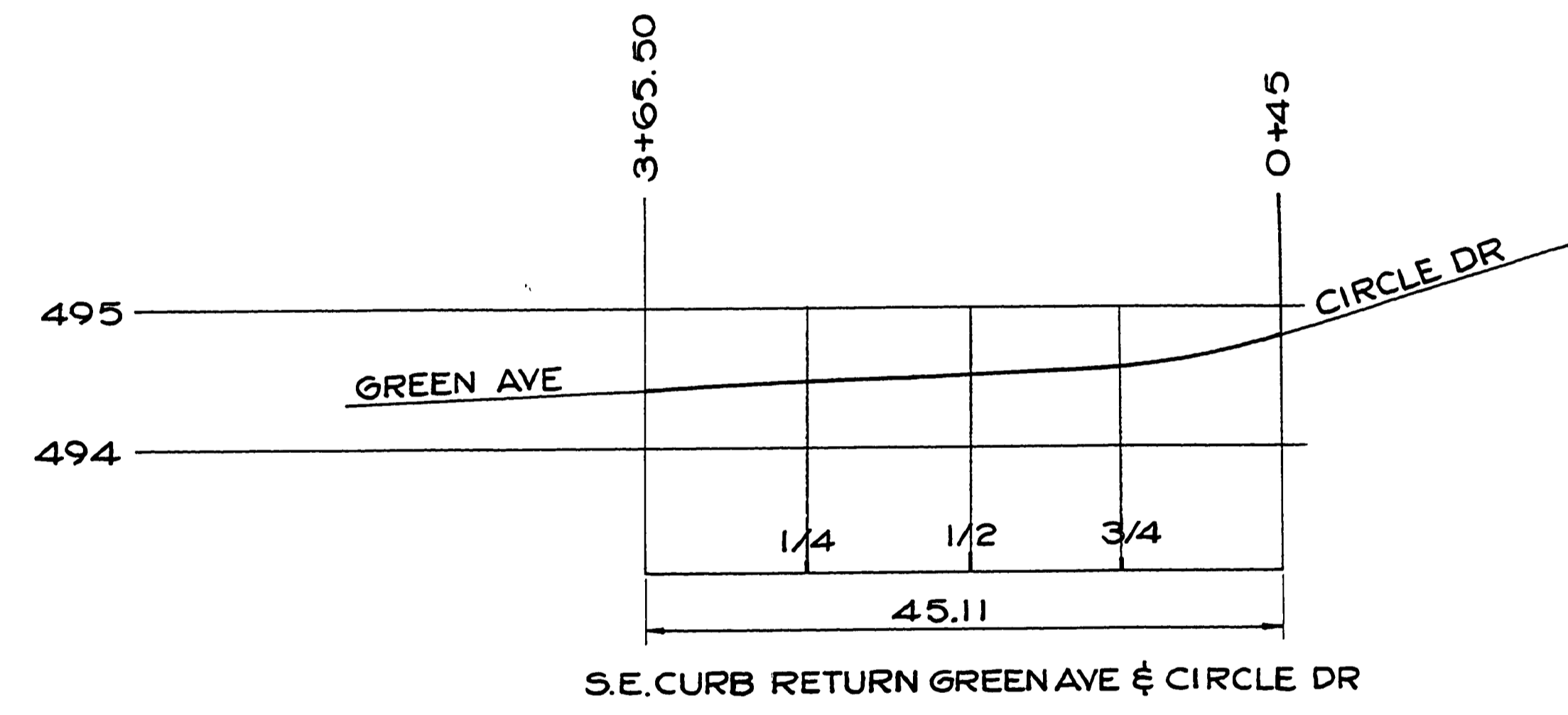
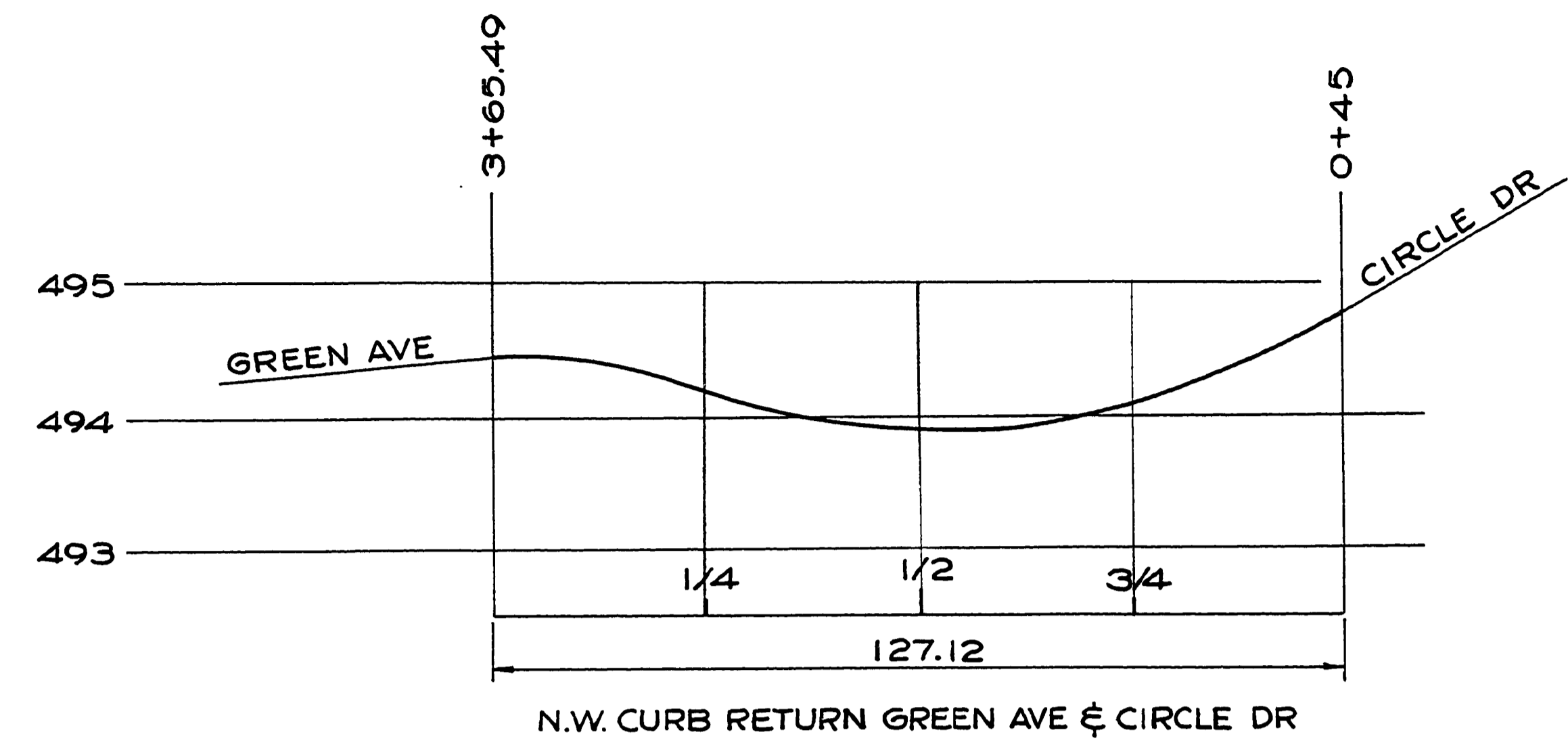
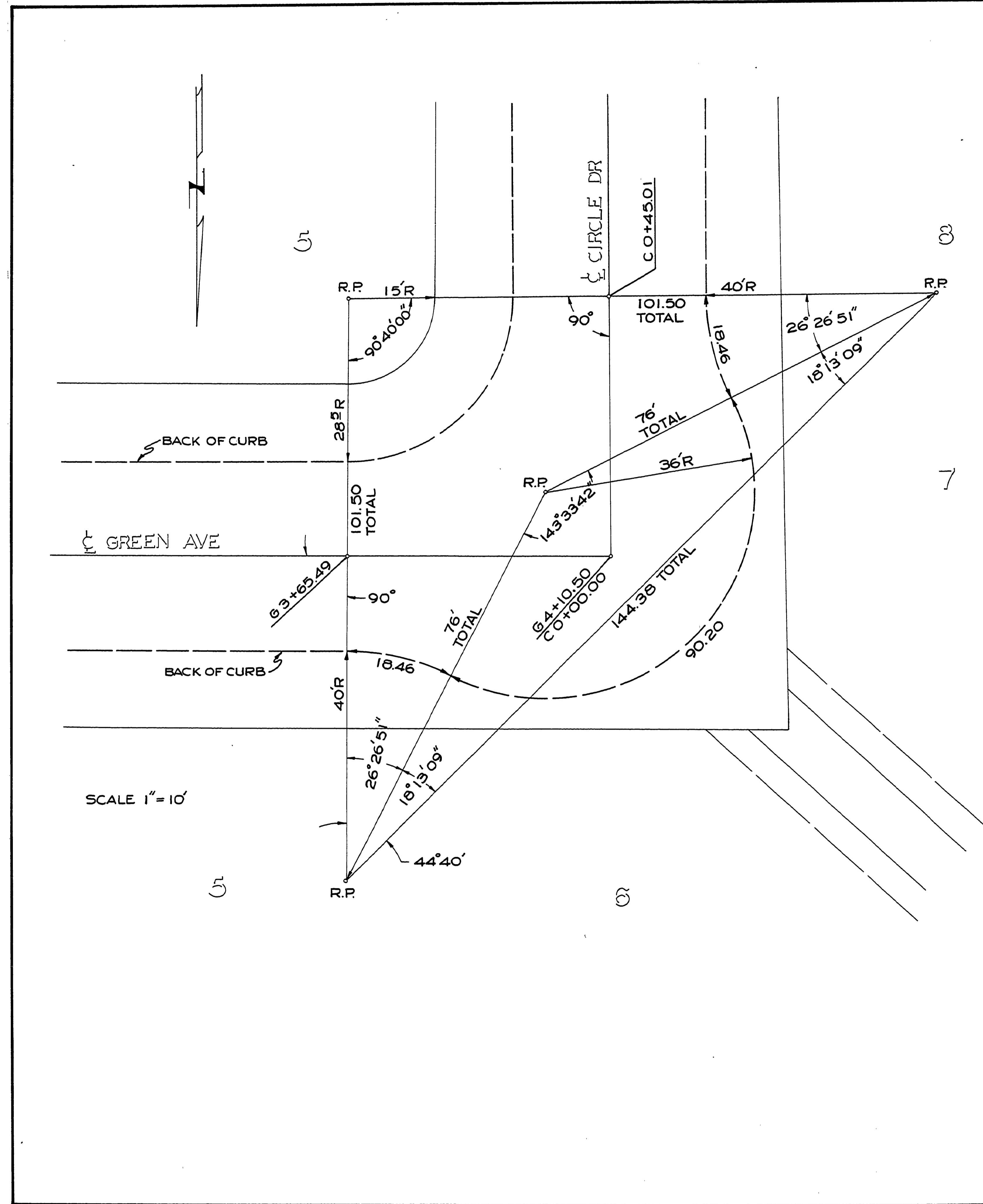


FILED
RECEIVED
JUL 15 1975
COUNTY SURVEYOR
DOUGLAS COUNTY, ORG.



NOT REVISED
AS CONSTRUCTED

DOUGLAS COUNTY ROAD DEPT.
SUNNYSLOPE STS ROAD # 278
MAY 1971 SH. 5
GEORGE E. GRUBB COUNTY ENGR.

RD278009