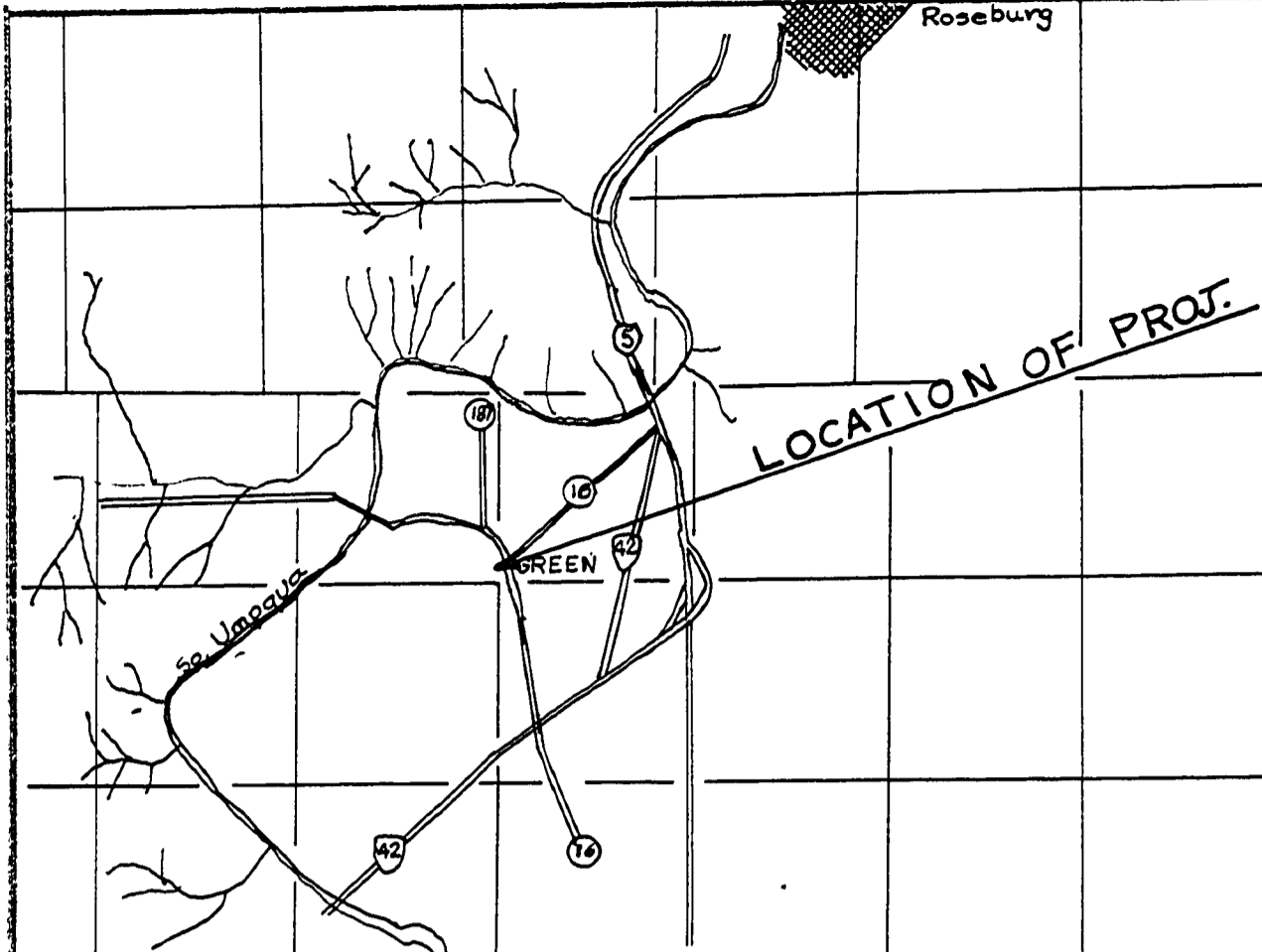


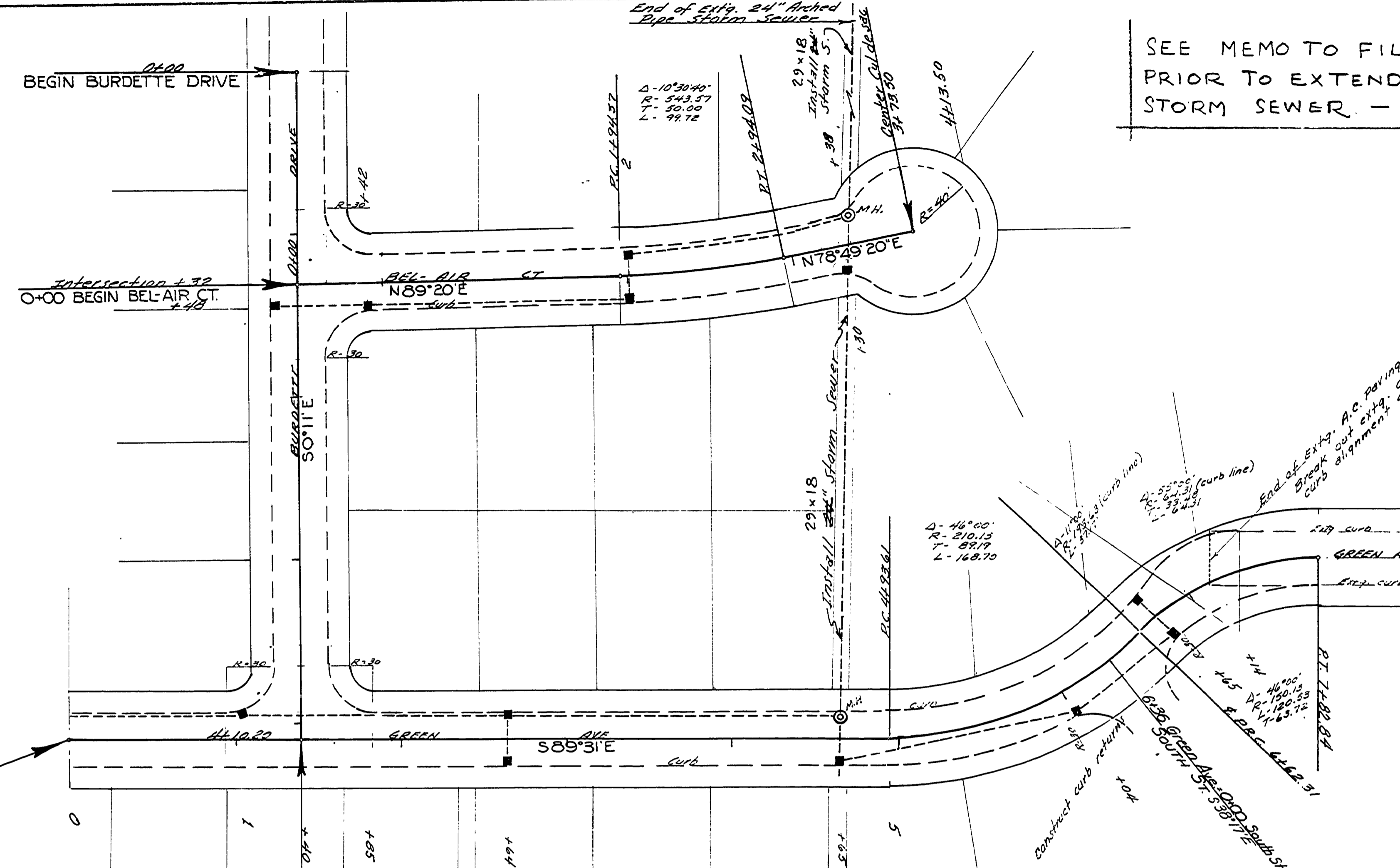
SEE MEMO TO FILES 9-24-70  
PRIOR TO EXTENDING ANY  
STORM SEWER - Bowen 9-24-70

FILED  
RECEIVED  
JUL 15 1970  
COUNTY SURVEYOR  
DOUGLAS COUNTY, ORE.

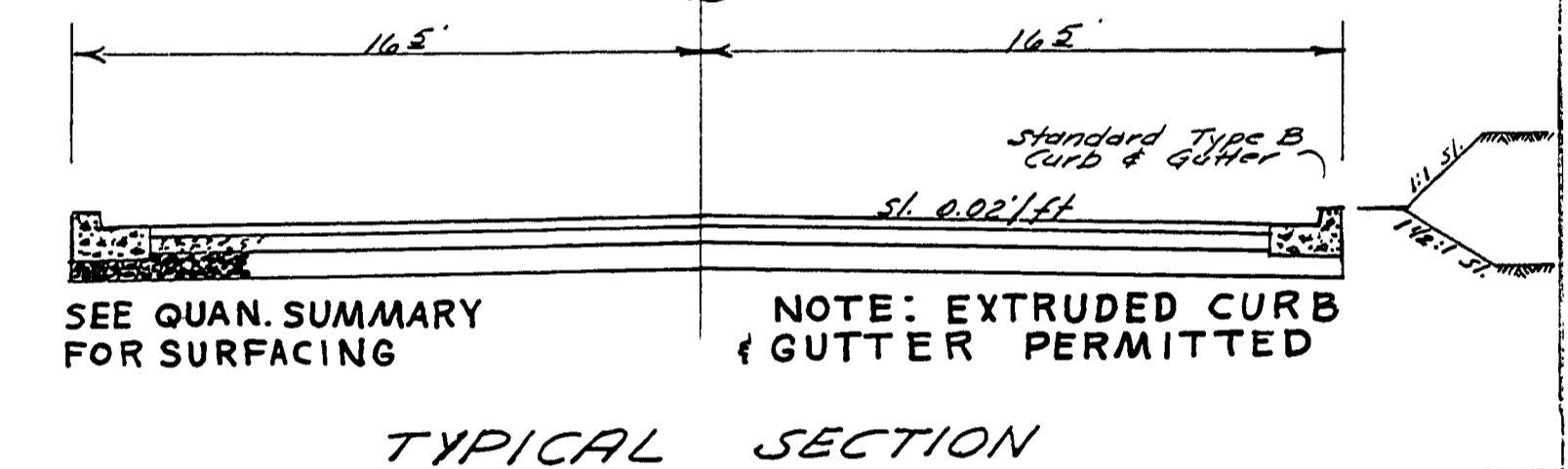


VICINITY MAP T. 28 S. R. 6 W. W.M.

- Note: Verify Present 29"x18" Storm Sewer Inlet Elevation Prior To Installing Any Storm Sewer
- Note: Extg. Buried Utilities Are San. Sewer, Water, Telephone & Gas
- Note: Provide Driveway Curb Cuts & Weep Holes As Directed By Engineer
- Note: San Sewer is in Close Proximity to Storm Sewer
- Note: All Metal Pipe Shall be Coated, 14 Gauge Steel All Other Pipe Concrete and Meeting Strength Requirements of Class III

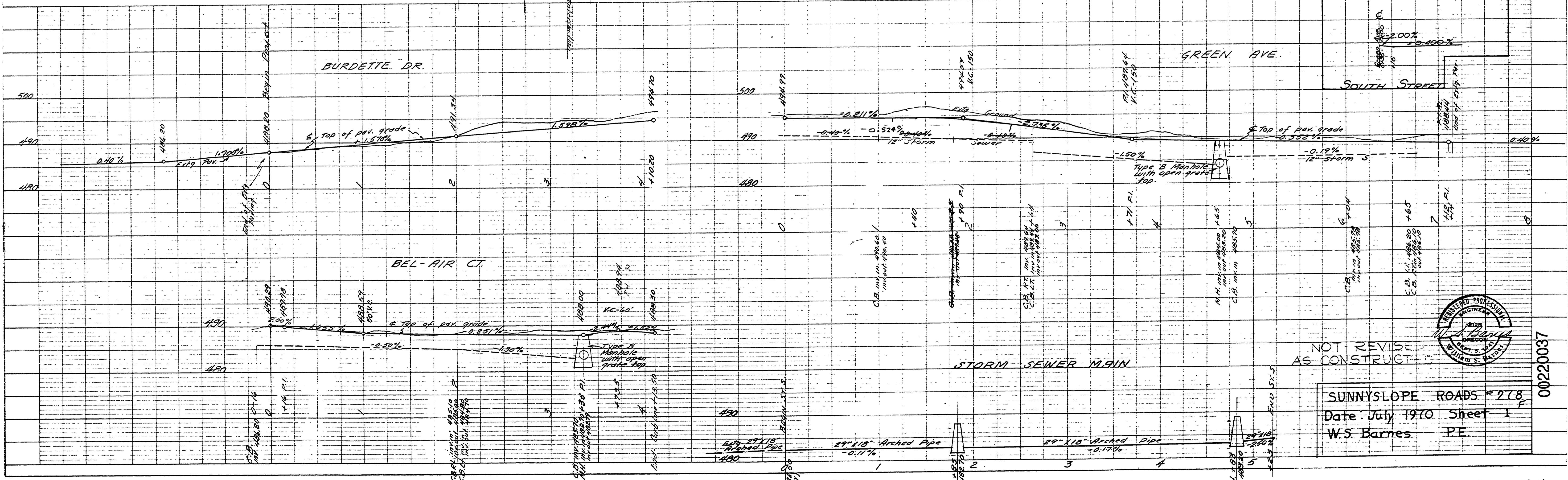


THIS SET OF PLANS CONTAIN  
1 SHEET OF ROAD PLANS  
1 SHEET QUANTITY SUMMARY  
STD. DWGS. 2,3,4, & 15  
TOTAL 6 SHEETS



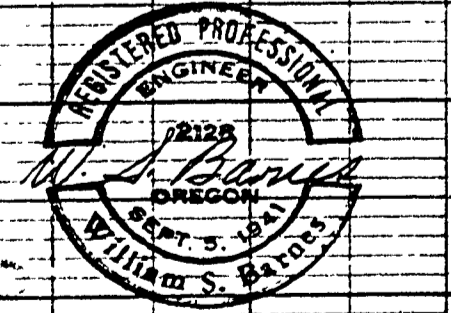
DATE	BY	SAVED
		PLANNED
		NOTED
		STRUCTURE NOT AS SHOWN

DATE	BY	SAVED
		PLANNED
		NOTED
		STRUCTURE NOT AS SHOWN



NOT REVISIONS  
AS CONSTRUCTED

SUNNYSLOPE ROADS #278  
Date: July 1970 Sheet 1  
W.S. Barnes P.E.



00220037