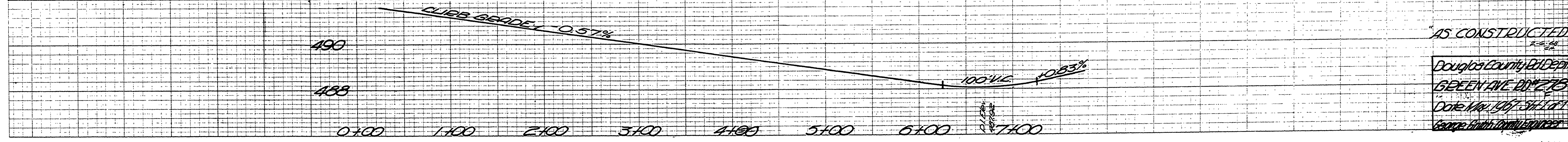
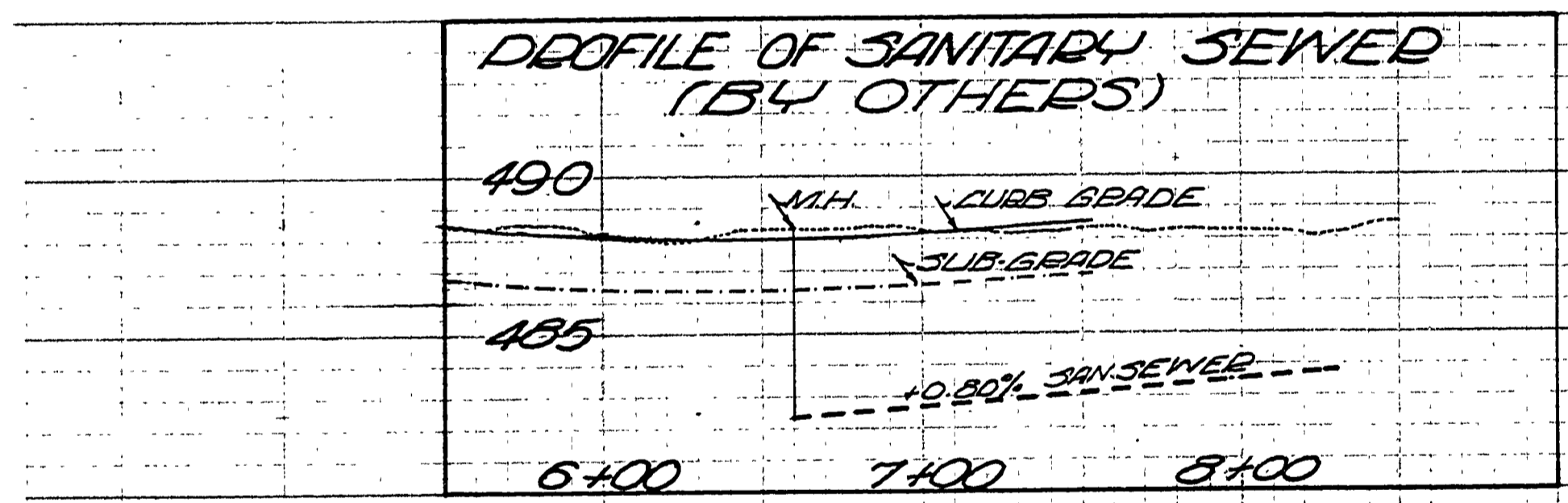
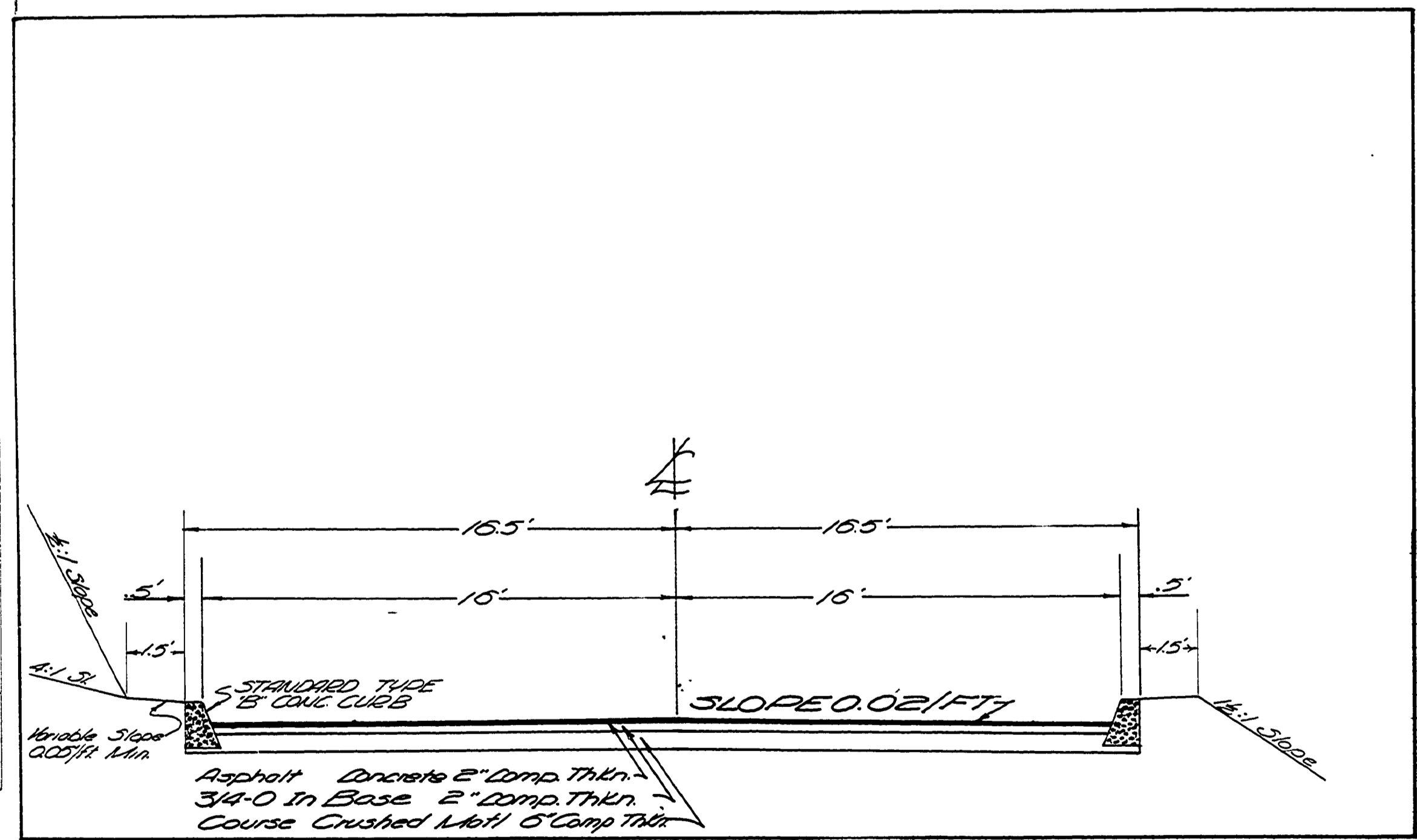
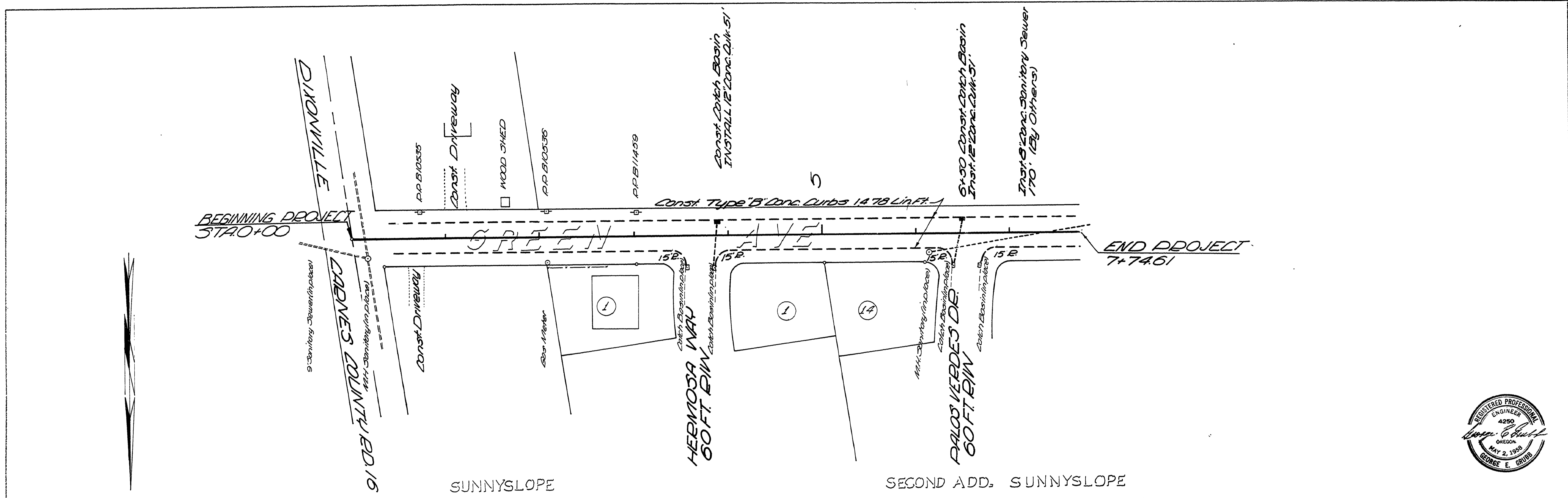


DATE
BY
DRAWN
CHECKED
DATE
BY
DATE
BY

DATE
BY
DATE
BY
DATE
BY



FILED
RECEIVED
MAY 2 1968
COUNTY SURVEYOR
DOUGLAS COUNTY, ORE.

AS CONSTRUCTED
Douglas County Dept.
GREEN AVE DD 275
Date May 1967
George E. Grubb, County Engineer

00000015