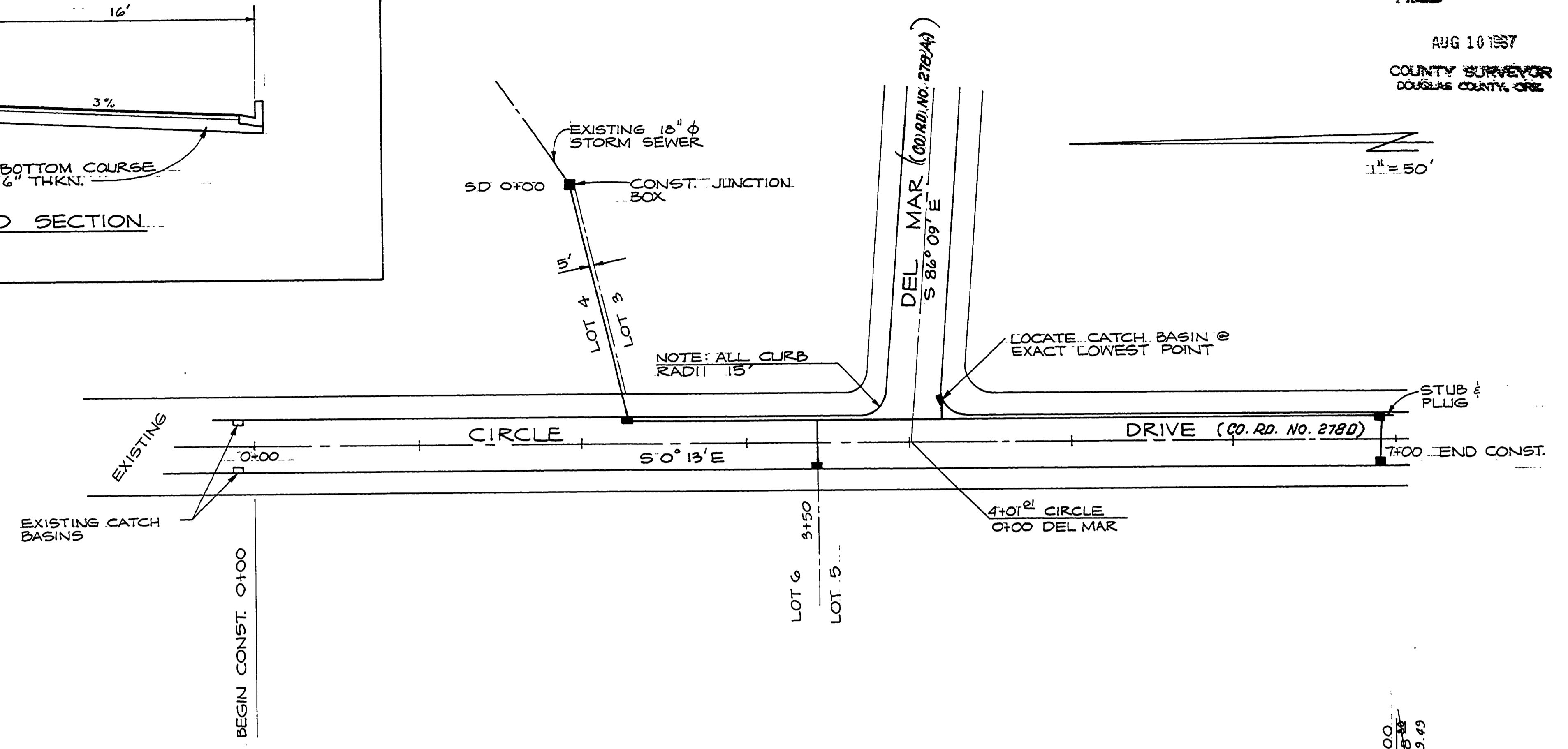
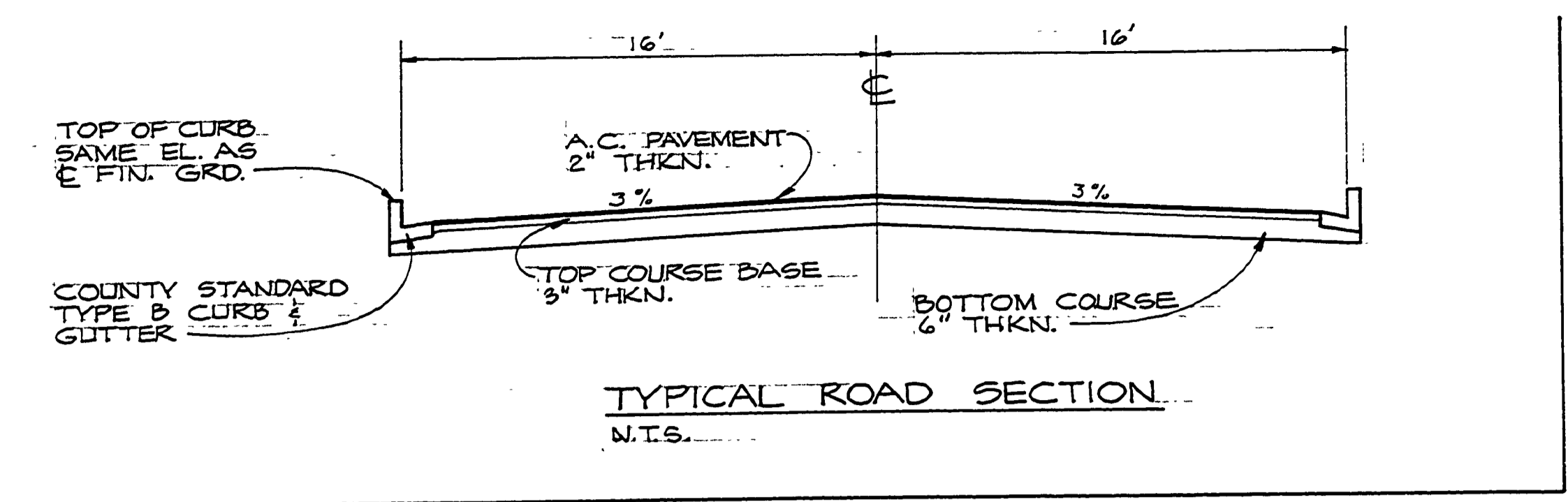
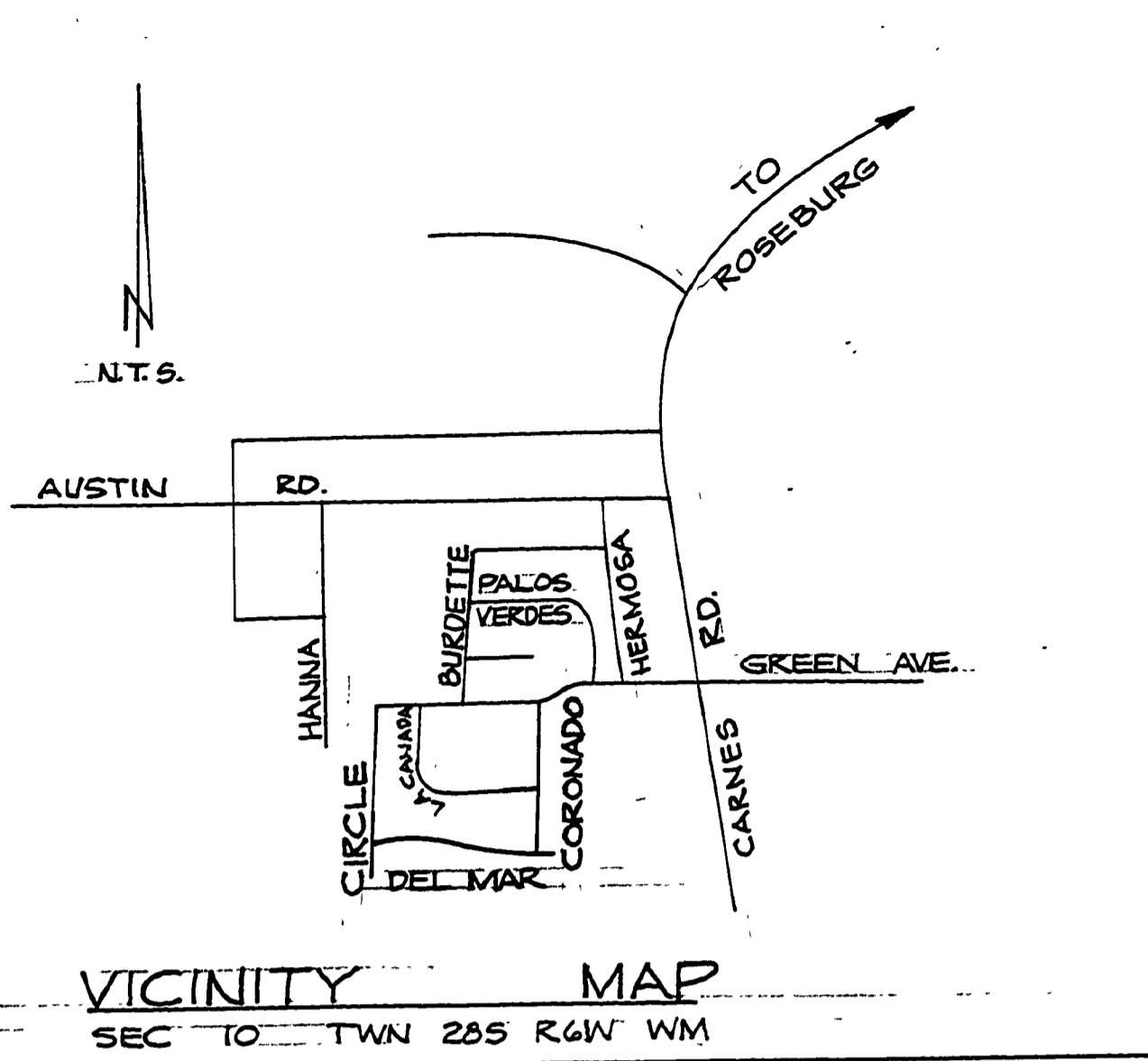
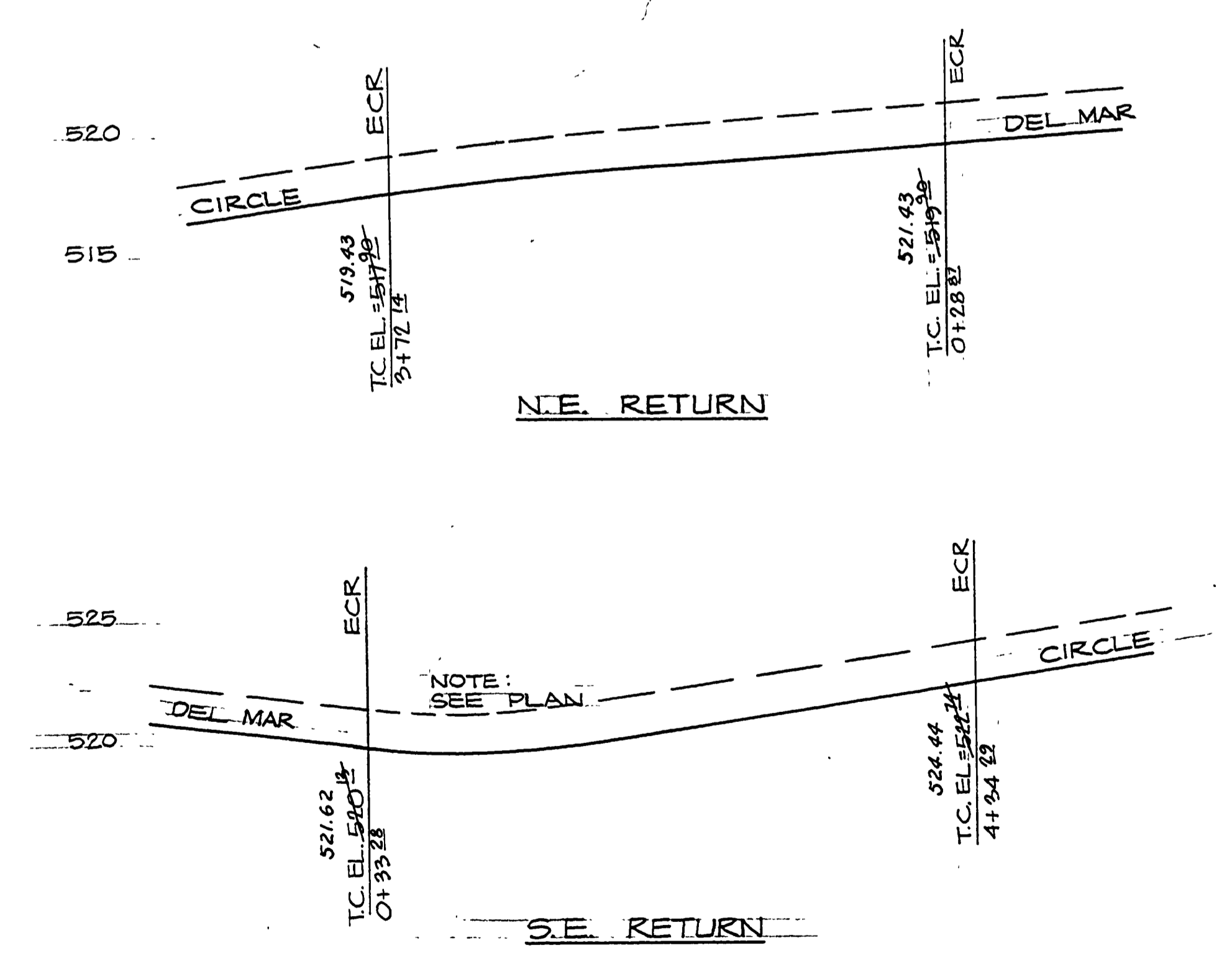


FILED
AUG 10 1987
COUNTY SURVEYOR
DOUGLAS COUNTY, ORE

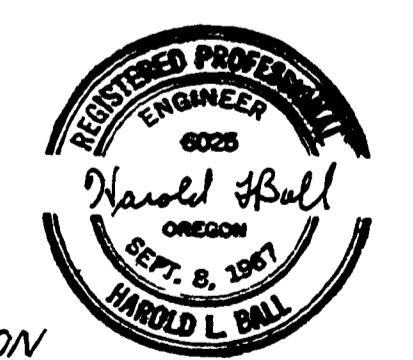
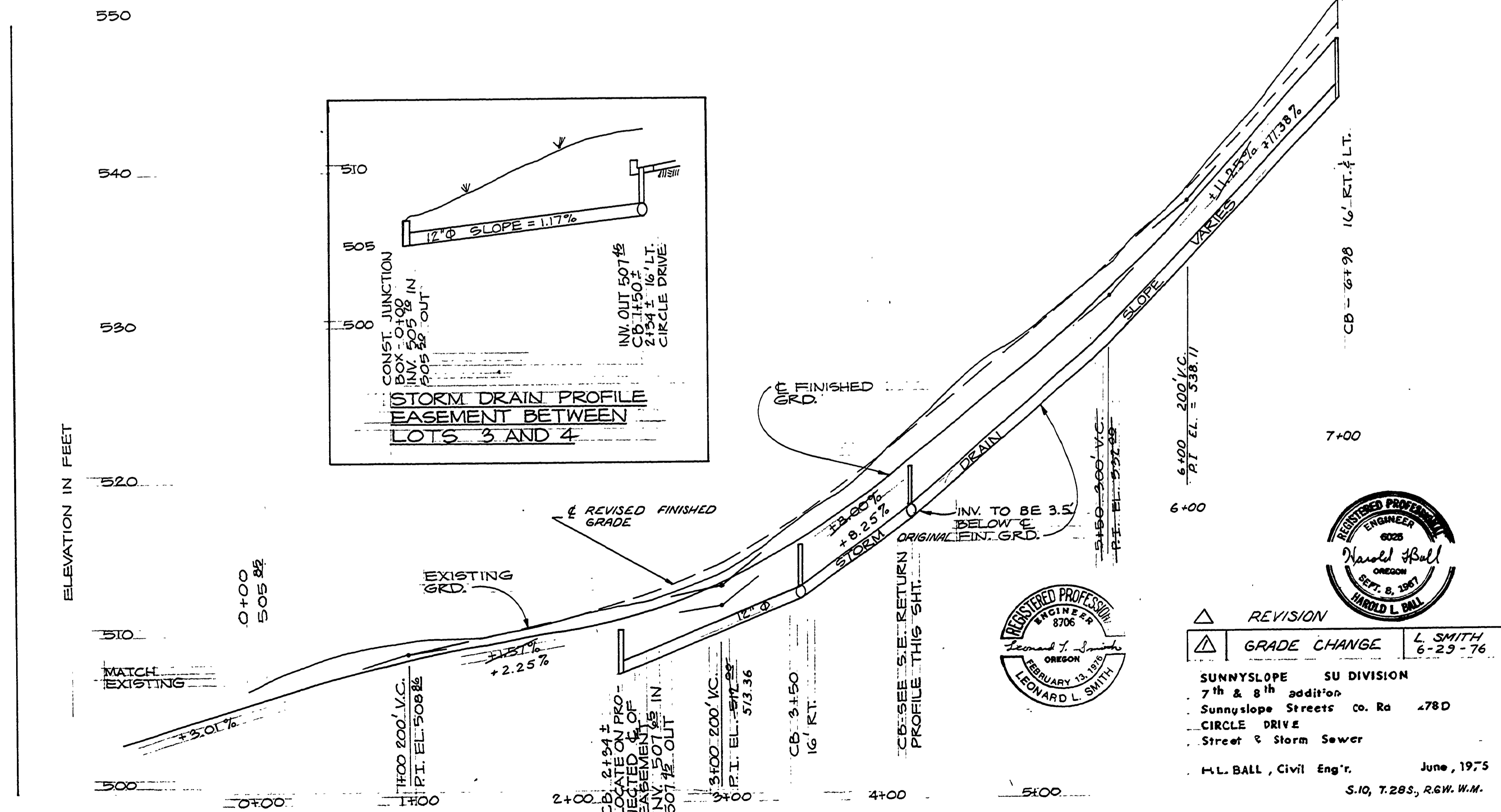
1" = 50'



PLAN



TOP OF CURB PROFILES
CIRCLE & DEL MAR



REVISION	DATE
GRADE CHANGE	L. SMITH 6-23-76

SUNNYSLOPE SU DIVISION
7th & 8th addition
Sunnyslope Streets Co. Rd. 278D
CIRCLE DRIVE
Street & Storm Sewer
H.L. BALL, Civil Eng'r. June, 1975
S.10, T.28S, R.6W. W.M.

M.P. 0.07 - 0.21

#278D 1975

00070021