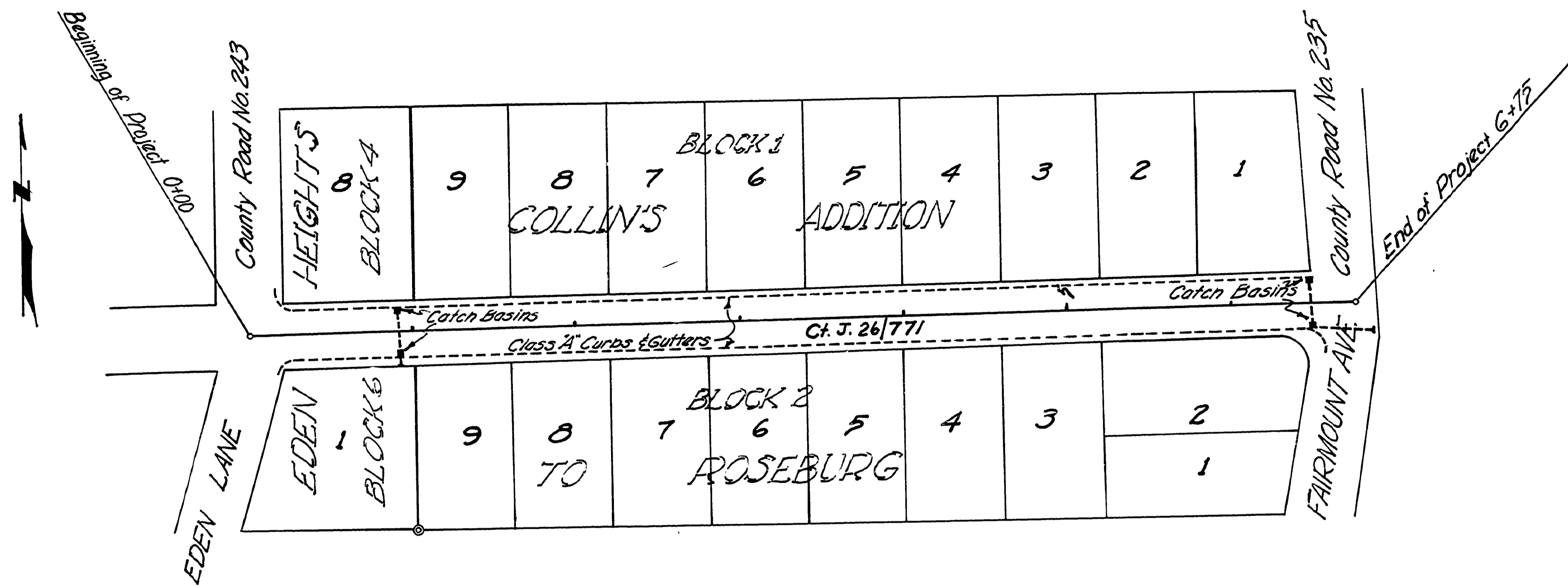


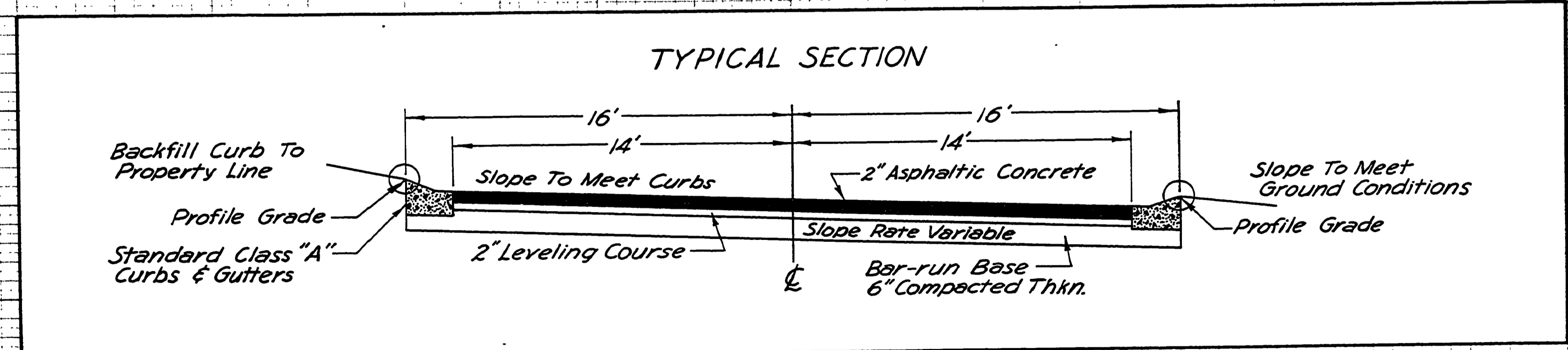
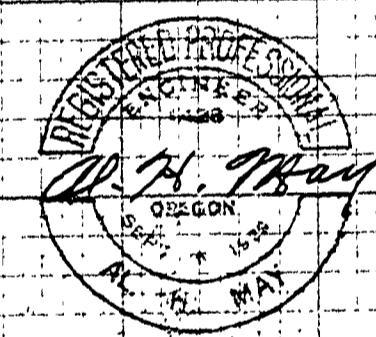
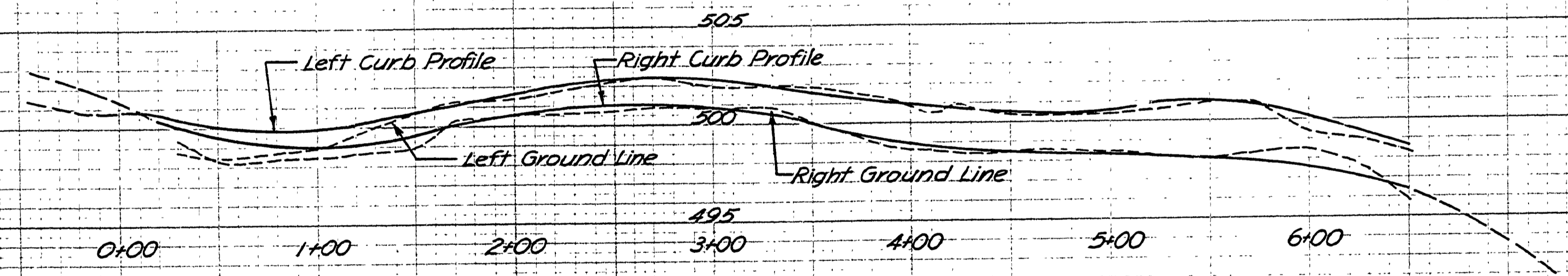
T.27S., R.6W.W.M.



Cecil Street as shown in Collins Addition & Eden Heights as recorded in Douglas County Plat Records Volume 7 Page 18 & Volume 6 Page 41 Adopted by Resolution of the County Court this 6 day of December, 1963

V. T. Jackson Judge
E. R. ... Commissioner
Ray E. ... Commissioner

Scale 1"=50'



FILED
 RECEIVED
 JUL 8 1963
 COUNTY SURVEYOR
 DOUGLAS COUNTY, ORE.

Douglas County Road Dept.
CECIL STREET Co. Rd. #265
 Date 8-16-63 Sheet 1 of 1
 A.H. May County Engineer

no longer a county road Aug. 1963
 Co. Rd. #265 sht. 1 of 1

RD265002

DATE
 BY
 CHECKED
 APPROVED

DATE
 BY
 CHECKED
 APPROVED