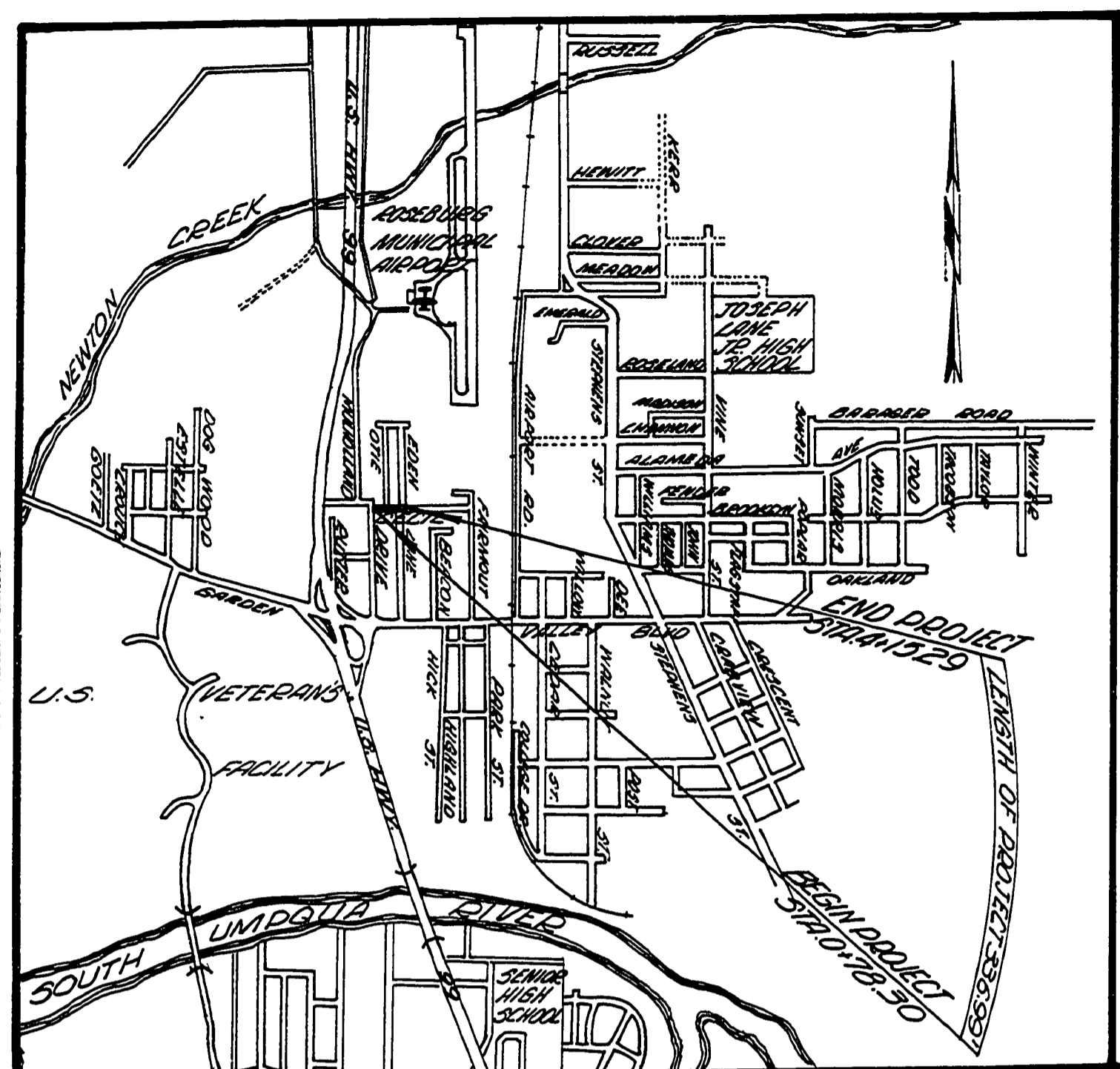
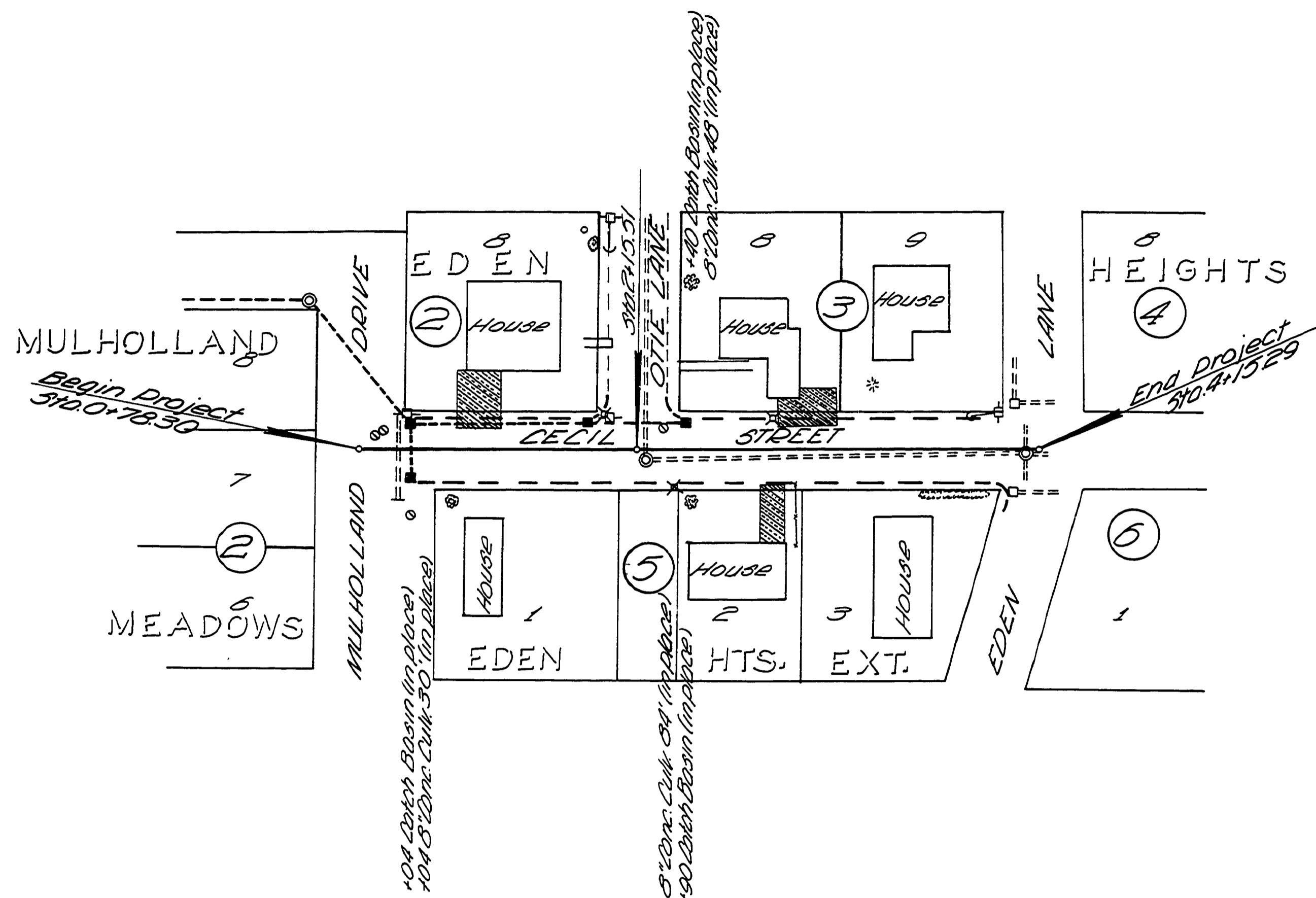


SEC. 12 T. 27 S. R. 6 W. W. M.

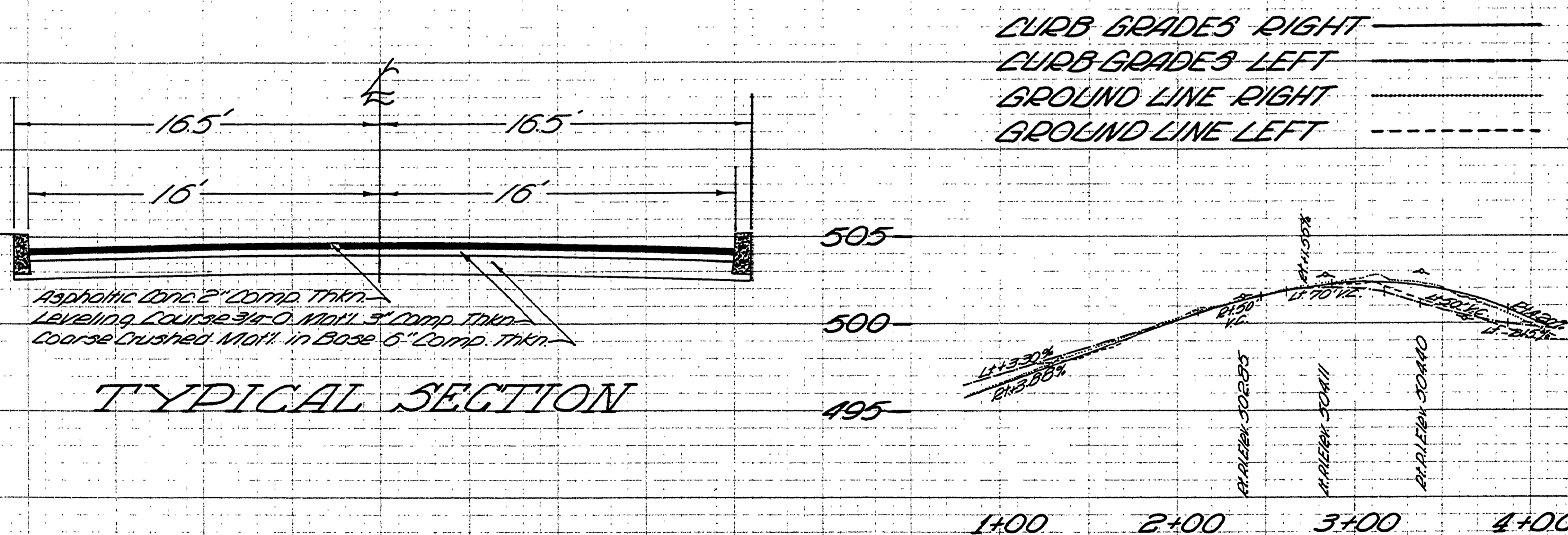
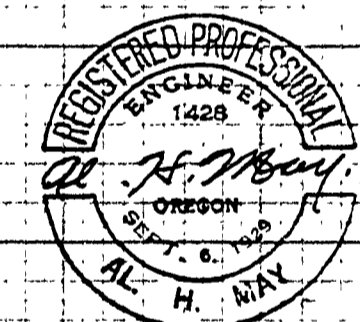


VICINITY MAP



FINAL SURVEY
 ORIGINAL SURVEY
 REVISIONS
 DATE
 NO.

ORIGINAL SURVEY
 REVISIONS
 DATE
 NO.



TYPICAL SECTION

APPROVED BY DOUGLAS COUNTY
 BOARD OF COMMISSIONERS THIS 25th
 DAY February 1956
Ray E. Deane
 COMMISSIONER
E. P. Madigan
 COMMISSIONER
Al H. Ray
 COUNTY ENGINEER

FILED
 RECEIVED
 MAR 3 1956
 COUNTY SURVEYOR
 DOUGLAS COUNTY, ORE.

Douglas County Rd. Dept.
CECIL ST. # 265
 Date 3/11/56
 Al H. Ray, County Eng.

RD265001